

## BabylissPro B0DHH685Q4

# BaBylissPRO Nano Titanium Oval Ionic Hot Air Styler

## INSTRUCTION MANUAL - MODEL B0DHH685Q4

### Introduction

Thank you for choosing the BaBylissPRO Nano Titanium Oval Ionic Hot Air Styler. This innovative 3-in-1 tool is designed to dry, smooth, volumize, and shine your hair with ease. Featuring Nano Titanium technology, ceramic coating, dual ion generation, and a combination of boar and nylon bristles, it provides efficient heat transfer and gentle styling for all hair types. Please read this manual thoroughly before use to ensure safe and optimal performance.

### Product Components

Your BaBylissPRO Nano Titanium Oval Ionic Hot Air Styler comes with the main handle unit and three interchangeable attachments:

- **Main Handle Unit:** Contains the motor, heating element, and control settings.
- **Styling Brush Attachment:** 2-1/2" oval design with tangle-free combination boar and nylon bristles for smoothing, creating volume, and curling ends.
- **Concentrator Nozzle Attachment:** Directs airflow for precise styling and drying.
- **Diffuser Attachment:** Lifts and separates hair for body and volume, distributing air evenly to maintain curls without frizz.



Image: All components of the BaBylissPRO Nano Titanium Hot Air Styler.

## Setup

---

### Attaching and Detaching Attachments

To attach an accessory, align the arrow on the attachment with the arrow on the main handle unit. Push the attachment onto the handle and twist clockwise until it clicks securely into place. To detach, press the release button on the handle and twist the attachment counter-clockwise, then pull it off.

Your browser does not support the video tag.

Video: Demonstrates how to attach and detach the various styling heads.





Image: Styling brush attachment securely connected to the main unit.





Image: Concentrator nozzle attachment connected to the main unit.





Image: Diffuser attachment connected to the main unit.

## Power Connection

Ensure the appliance is switched off before plugging it into a suitable electrical outlet. The unit features a 9 ft. professional swivel cord for tangle-free handling during use.

## Operating Instructions

---

### Power and Heat Settings

The styler features a rotating switch at the base of the handle to control power and heat settings:

- **OFF (0):** Turns the appliance off.
- **LOW (I):** Low heat, low speed setting. Ideal for fine or damaged hair, or for gentle drying.
- **HIGH (II):** High heat, high speed setting. Suitable for thick or coarse hair, or for faster drying.
- **COOL SHOT (\*):** Provides a burst of cool air to set your style.

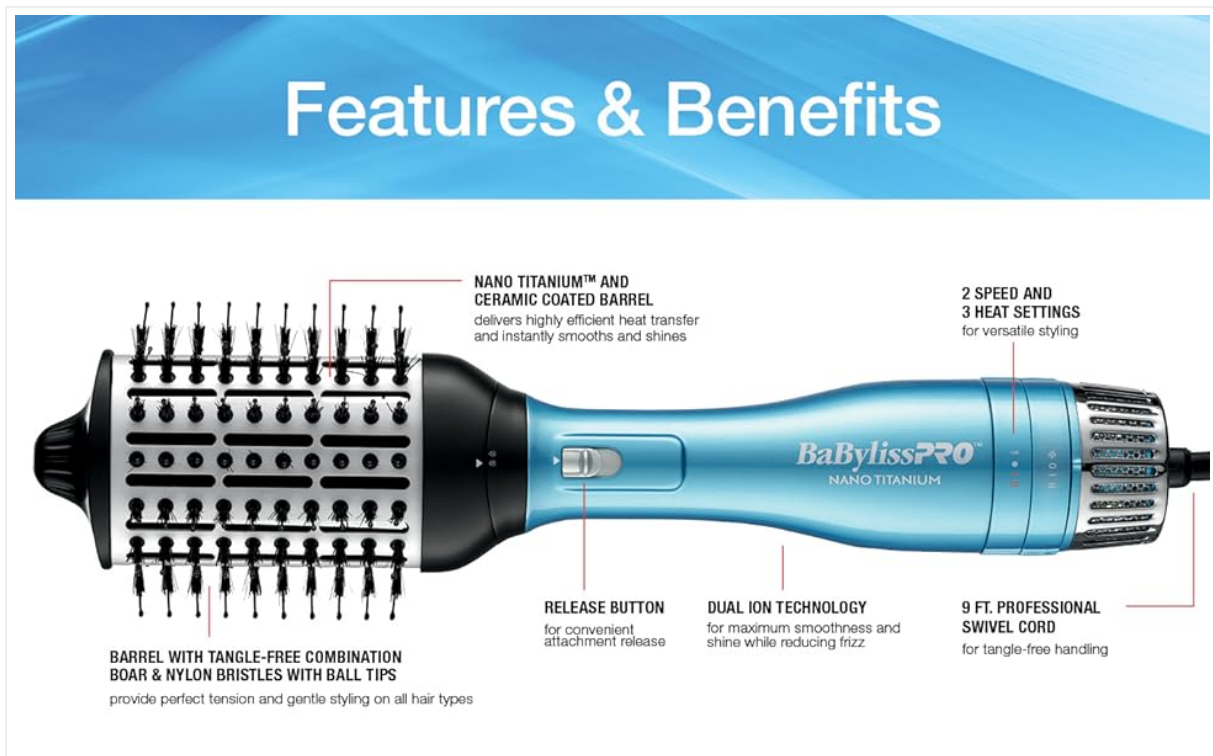


Image: Overview of the styler's features and controls.

## Using the Styling Brush Attachment

For best results, towel-dry hair to remove excess moisture. Section hair before styling. Place the brush close to the roots and brush downwards, rotating slightly to create tension. The combination boar and nylon bristles provide perfect tension for smoothing, adding volume, and curling ends. Use the cool shot to set the style.

## Using the Concentrator Nozzle Attachment

Attach the concentrator nozzle for focused airflow. This is ideal for precision drying and styling specific sections of hair. Direct the airflow downwards to smooth the hair cuticle and enhance shine.

## Using the Diffuser Attachment

The diffuser is designed to enhance natural curls and waves while minimizing frizz. Place sections of damp, product-applied hair into the diffuser bowl. Use a low heat and low speed setting. Gently lift hair towards the scalp to create volume and definition. Avoid excessive movement to prevent frizz.

Your browser does not support the video tag.

Video: Demonstrates the proper technique for diffusing curly hair.

## Maintenance

Regular maintenance ensures the longevity and optimal performance of your styler.

## Cleaning the Attachments



After each use, ensure the styler is unplugged and cool. Remove any hair tangled in the styling brush bristles. Wipe the attachments with a soft, damp cloth. Do not use abrasive cleaners or immerse in water.

Cleaning the Air Intake Filter

The rear filter cover should be cleaned regularly to prevent lint and hair buildup, which can restrict airflow and cause overheating. Ensure the unit is unplugged and cool. Gently twist and remove the filter cover. Use a soft brush or vacuum cleaner to remove any debris. Replace the filter cover by aligning and twisting until secure.

Storage

When not in use, unplug the appliance and allow it to cool completely. Store it in a dry location, out of reach of children. Do not wrap the power cord around the appliance, as this can damage the cord.

Troubleshooting

If you encounter any issues with your BaBylissPRO Hot Air Styler, please refer to the following common problems and solutions:

Problem	Possible Cause	Solution
Appliance does not turn on.	No power supply.	Check if the power cord is securely plugged into a working outlet. Test the outlet with another appliance.
Low airflow or overheating.	Blocked air intake filter.	Unplug the unit and allow it to cool. Clean the air intake filter as described in the Maintenance section.
Hair gets tangled in the brush.	Too much hair taken at once or improper technique.	Ensure hair is detangled before use. Work with smaller sections of hair. Do not wrap hair too tightly around the brush.

Specifications

- **Product Dimensions:** 7.4 x 38 x 11.5 cm; 990 g
- **Manufacturer:** BaBylissPRO
- **ASIN:** B0DHH685Q4
- **Country of Origin:** China
- **Technology:** Nano Titanium, Ceramic, Dual Ion Generator
- **Cord:** 9 ft. 360° Swivel Cord
- **Settings:** 2 Speed, 3 Heat Settings (Low, High, Cool Shot)

Warranty and Support

This product typically comes with a 1-year manufacturer's warranty. For warranty claims, technical support, or service inquiries, please contact BaBylissPRO customer service directly. Keep your proof of purchase for warranty validation.



