

## GRAUGEAR 18126

# GRAUGEAR 5.25 Inch Front Panel USB Hub and Card Reader

Model: 18126 | Brand: GRAUGEAR

## INTRODUCTION

Thank you for choosing the GRAUGEAR 5.25 Inch Front Panel USB Hub and Card Reader. This device is designed to expand the connectivity of your desktop PC by converting a standard 5.25-inch drive bay into a versatile front panel with high-speed USB ports, card reader slots, and audio jacks. This manual provides detailed instructions for installation, operation, and troubleshooting to ensure optimal performance and longevity of your product.

## PACKAGE CONTENTS

Please verify that all items listed below are included in your package:

- GRAUGEAR 5.25" Front Panel USB Hub with Internal Card Reader
- Mounting Screws
- USB 3.2 Type-E Key-A 20-Pin Header Cable
- USB 3.0 19-Pin Cable
- Instruction Manual
- Service Card

## FEATURES

### High-Speed Data Transfer

The USB ports on this front panel feature the latest USB 3.2 Gen 2 standard, supporting data transmission rates up to 10Gbps. This allows for rapid transfer of large files and ensures efficient connectivity for all your USB devices. It is also backward compatible with USB 3.0 and USB 2.0 standards.

## High Speed Data Transfer

with a data transfer rate of up to 10 Gbps

# 10Gbps



Image: Demonstrates the 10Gbps data transfer capability of the USB-C and USB-A ports.

## Multi-Port Functionality

This 8-in-1 multi-ports panel converts your 5.25-inch floppy disk drive space into a comprehensive connectivity hub. It includes 2 USB 3.2 Gen 2 USB-C ports, 2 USB 3.0 ports, a dedicated SD card slot, a microSD/TF card slot, a microphone input port, and an audio output port. This significantly increases the scalability of your desktop computer.

## 8 in 1 Multi-Ports Panel

USB-A x2 / USB-C x2 / SD & Micro SD Card Reader  
Earphone / Microphone interface



Image: Illustrates the variety of ports available and common devices that can be connected.

## Flexible Design for Desktop Integration

Designed to fit seamlessly into a standard 5.25-inch drive bay, this front panel offers easy integration into most desktop PC casings. Its compact and efficient design ensures it complements your system's aesthetics while providing essential front-facing ports.



Image: Shows the front panel unit installed within a desktop computer case.

## Durable and Safe Design

Constructed with sturdy materials, the GRAUGEAR front panel ensures long service life and durability. It incorporates multiple safety protection measures, including over-current, over-voltage, and short circuit protection, safeguarding your connected devices and your system. The design also features heat dissipation vents for optimal performance.

## Durable Design



Heat-dissipation



Reinforced joint



Rugged case

Image: Details the durable construction and heat dissipation features of the unit.

## Product Overview Video

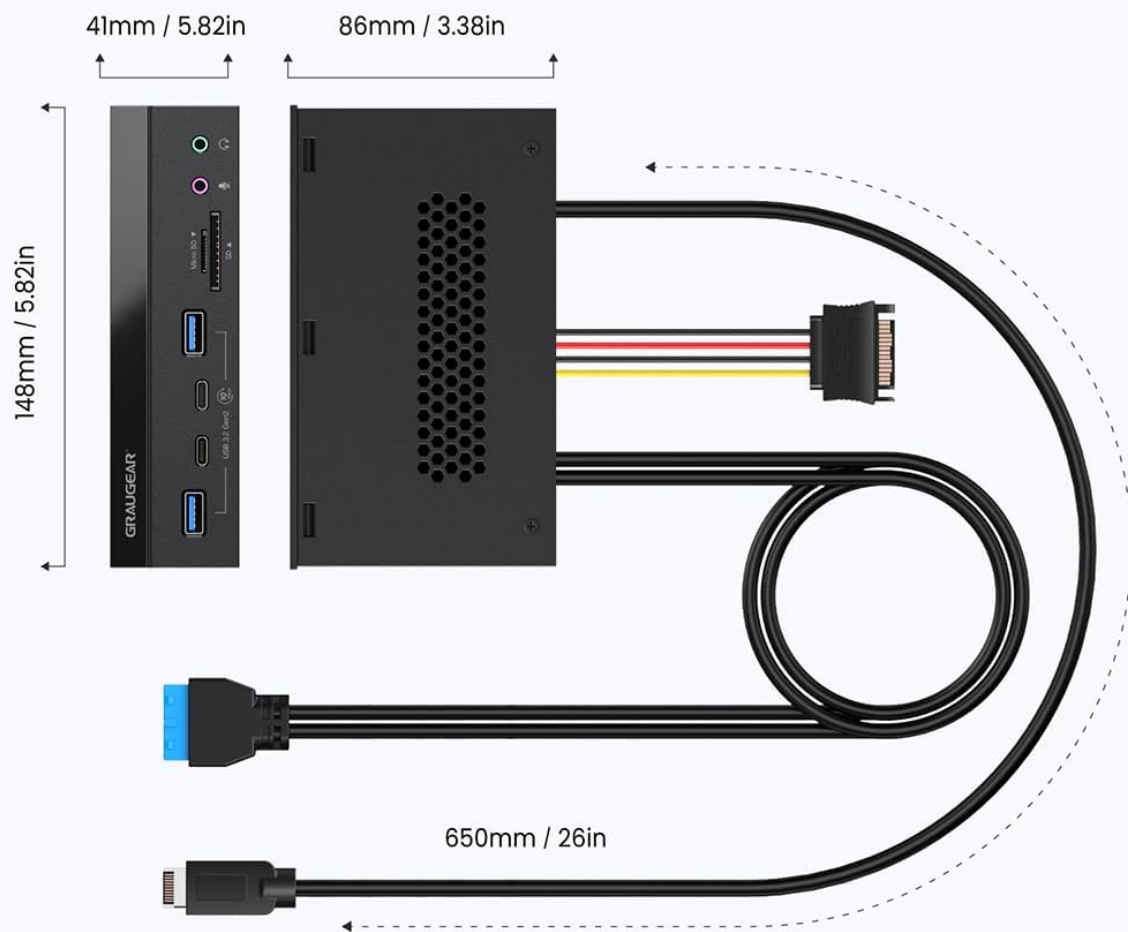
Your browser does not support the video tag.

Video: An official overview of the GRAUGEAR 5.25 Inch USB Front Panel, showcasing its features and design.

## SPECIFICATIONS

Attribute	Detail
Brand	GRAUGEAR
Model Number	18126
Hardware Platform	PC
Operating System Compatibility	Windows 11/10/8.1/8/7/Vista/XP
Item Weight	10.6 ounces
Package Dimensions	7.17 x 6.14 x 1.93 inches
Color	Black
Manufacturer	CHAB GmbH
Hardware Interface	MicroSD, USB, USB Type C, USB 3.0, USB 2.0
Special Features	Powered, Fast Data Transfer, Plug and Play
Compatible Devices	Headphones, Card Readers, Speakers, Desktops

# Specification



Connection to host computer	1 x USB 3.0 host (19 pin) header 1 x USB 3.2 Gen 2 A-Key (20 pin) header
Connection to power supply	1 x SATA 15-pin Power header
External interface	2 x Type-C® + 2 x Type-A + 1 x microphone 1 x earphone + SD & micro SD card reader slot
Cable length	650 mm
PC connection	5.25" bay

Image: Detailed specifications and dimensions of the front panel unit.

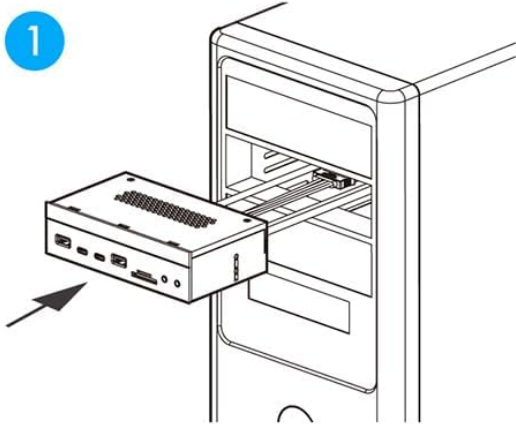
## INSTALLATION GUIDE

Follow these steps to properly install your GRAUGEAR 5.25 Inch Front Panel:

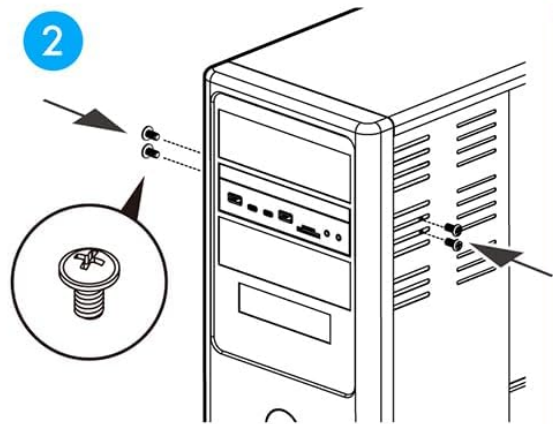
1. **Prepare Your PC:** Ensure your computer is powered off and unplugged from the wall outlet. Open your PC case to access the internal components.

2. **Locate a 5.25" Bay:** Identify an available 5.25-inch drive bay in your PC case. Remove any front panel covers or drive bay cages as necessary.
3. **Insert the Front Panel:** Gently slide the GRAUGEAR front panel into the chosen 5.25-inch bay from the front of the case until it is flush with the PC's front bezel.
4. **Secure the Panel:** Use the provided mounting screws to fix the front panel securely into the drive bay. Ensure it is firmly in place to prevent movement when connecting devices.
5. **Connect USB 3.0 Header:** Locate the USB 3.0 19-pin header on your motherboard. Connect the corresponding USB 3.0 19-pin cable from the front panel to this header.
6. **Connect USB 3.2 Gen 2 Type-E Header:** Locate the USB 3.2 Gen 2 Type-E Key-A 20-pin header on your motherboard. Connect the corresponding cable from the front panel to this header. *Note: Some older motherboards may not have this header. An adapter (not included) or a PCIe card (not included) may be required to convert a USB 3.0 header or PCIe slot to a Type-E connector.*
7. **Connect SATA Power:** Connect the 15-pin SATA power connector from the front panel to an available SATA power cable from your power supply unit (PSU). This connection is required for the card reader and overall functionality.
8. **Close PC Case:** Once all connections are secure, close your PC case and reconnect the power cable.

# Easy Installation



Insert the front panel into a free 5.25" bay.



Fix the front panel with the supplied screws.

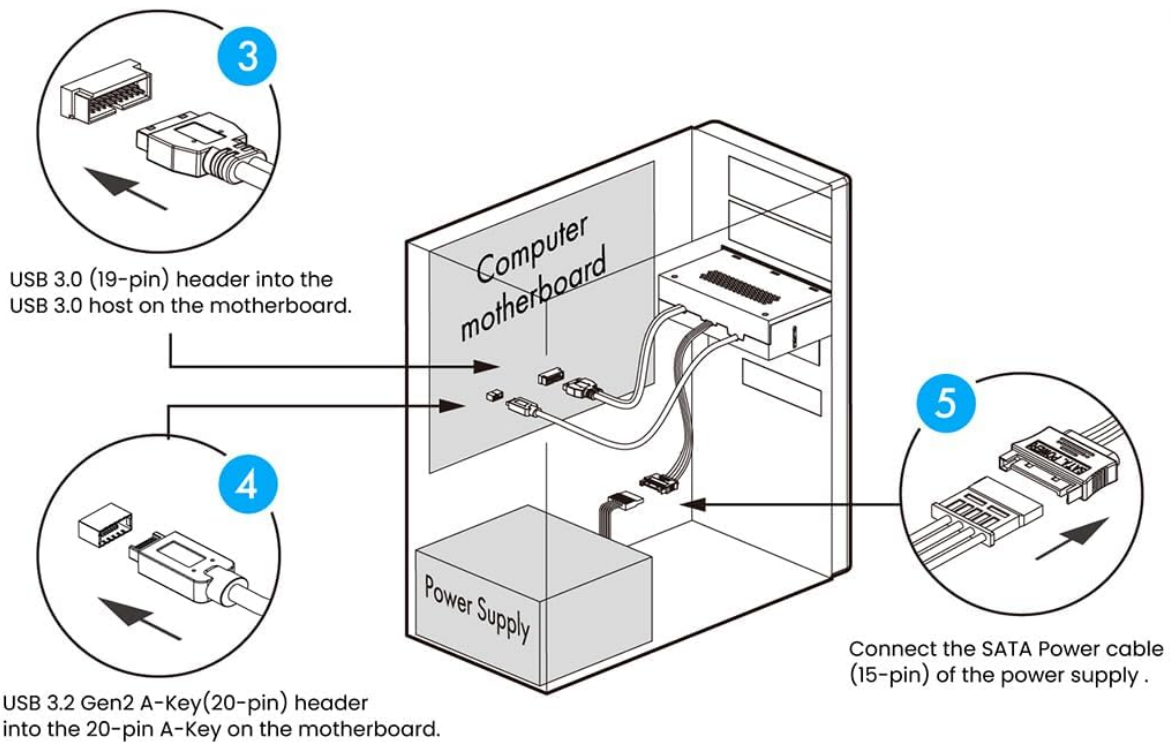


Image: Visual guide for installing the front panel and connecting its internal cables.

## OPERATION GUIDE

Once installed, the GRAUGEAR Front Panel operates as a plug-and-play device. No additional drivers are typically required for Windows operating systems.

- **USB Ports (USB-C and USB-A):** Simply plug your USB devices (e.g., flash drives, external hard drives, keyboards, mice)

into the corresponding USB-C or USB-A ports. The system will automatically detect and configure the device.

- **SD/microSD Card Readers:** Insert your SD or microSD/TF memory cards into the appropriate slots. The card will appear as a removable drive in your computer's file explorer, allowing you to access, transfer, and manage files.
- **Audio Ports (Microphone and Headphone):** Connect your microphone to the pink port and your headphones or speakers to the green port. Ensure your system's audio settings are configured to use these new input/output devices if they are not automatically selected.

## COMPATIBILITY

---

The GRAUGEAR 5.25 Inch Front Panel is designed for broad compatibility:

- **Operating Systems:** Compatible with Windows 11, Windows 10, Windows 8.1, Windows 8, Windows 7, Windows Vista, and Windows XP.
- **PC Cases:** Fits into any standard 5.25-inch optical drive bay.
- **Motherboard Headers:** Requires an available USB 3.0 19-pin header and a USB 3.2 Gen 2 Type-E Key-A 20-pin header on your motherboard.
- **Power Supply:** Requires an available 15-pin SATA power connector from your PSU.



# Universal Compatibility



Image: Overview of the unit's universal compatibility with different devices and system requirements.

## TROUBLESHOOTING

If you encounter issues with your GRAUGEAR Front Panel, please refer to the following common solutions:

- **No Power/Not Detected:**

- Ensure the 15-pin SATA power connector is securely attached to your PSU's SATA power cable.
- Verify that both the USB 3.0 19-pin and USB 3.2 Gen 2 Type-E 20-pin cables are fully and correctly seated into their respective motherboard headers. A loose connection can prevent functionality.
- Check your motherboard's BIOS/UEFI settings to ensure USB ports are enabled.

- **Slow Data Transfer Speed:**

- Ensure you are using USB 3.0 or USB 3.2 Gen 2 compatible devices and cables to achieve maximum speeds. Connecting a USB 2.0 device will result in USB 2.0 speeds.
- Verify that the cables are properly connected to the correct motherboard headers (USB 3.0 for 5Gbps, USB 3.2 Gen 2 for 10Gbps).

- **Card Reader Not Working:**

- Ensure the SATA power connection is secure, as it is required for the card reader.
- Try a different SD/microSD card to rule out a faulty card.
- Check Device Manager in Windows for any unrecognized devices or driver issues.

- **Audio Jacks Not Working:**

- Check your computer's sound settings to ensure the correct playback and recording devices are selected.
- Test with different headphones/microphones.

## WARRANTY AND SUPPORT

---

GRAUGEAR products come with a standard manufacturer's warranty. For specific warranty terms and conditions, please refer to the service card included in your package or visit the official GRAUGEAR website.

If you require technical assistance or have questions regarding your product, please contact GRAUGEAR customer support:

- **Website:** [www.graugear.de](http://www.graugear.de)
- **Manufacturer:** CHAB GmbH

© 2025 GRAUGEAR. All rights reserved.


[www.graugear.de](http://www.graugear.de)

## Multi Frontblende für 5,25" Schacht

mit USB HUB und Kartenleser



**Hauptmerkmale**

- Frontblende mit 4x USB, Kartenleser und Audio Anschlüssen
- 4x 10 Gbps / USB Anschluss, 2x USB Type-C + 2x Type-A
- 1x SD und 1x microSD Kartenleser
- 1x Mikrofon und 1x Kopfhöreranschluss
- Front in einem Standard 5,25" Schacht

**Nicht nur für und eben schnell...**

Die Frontblende GRAUGEAR G-MP03CR-AU mit 4x USB, Kartenleser und Audio Anschlüssen sorgt dafür, dass sich viele weitere Anschlüsse direkt an der Front anbringen lassen. Somit für das Single, Junior oder den PC "Erfinder" ein Ende. Haben dann das Frontgarnitur. Front 4x 10 Gbps / USB Anschluss mit USB-HUB, Kartenleser und Audio Anschlüssen schließt und integriert in einen neuen 5,25" Standard Schacht im PC eingebaut.



**Logistische Daten**

Verpackungsmaß: 42 x 28 x 10 cm, Netto-Gewicht: 192 g, Bruttogewicht: 302 g, Nettogewicht: 302 g  
Abmessungen (L x B x H) (mm): 420 x 280 x 100 (mm) (L x B x H) (mm) (L x B x H) (mm)

**Artikel** G-MP03CR-AU  
**Artikel No.** 18126  
**BAR/STN** 4262765351036

**Systemvoraussetzung**

- 1x externer USB 3.0 (10 Gbps) Host Header
- 1x interner USB 3.2 Gen2 (20 Gbps) Key-A (20 Gbps) Host Header

**Spezifikation**

- PC-Anschluss** 1x intern 5,25" Schacht
- Produktmaterial** Plastik
- Kabelgröße** 1,57 m
- Abmessung** 148 x 60 x 11 mm
- Gewicht** 220 g

**Verpackungsinhalt**

- 1 x G-MP03CR-AU
- 1 x Benutzerhandbuch
- 1 x Servicekarte
- 1 x Befolgsanleitung

**QR Code**



## [GRAUGEAR G-MP03CR-AU 5.25" Front Panel Hub mit USB 3.2 Gen2 und Kartenleser](#)

Die GRAUGEAR G-MP03CR-AU ist eine 5,25 Zoll Frontblende, die Ihrem PC zusätzliche Konnektivität hinzufügt. Sie bietet vier USB 3.2 Gen2 Anschlüsse (zwei USB-C und zwei USB-A), einen integrierten SD- und microSD-Kartenleser sowie Mikrofon- und Kopfhöreranschlüsse für einfachen Zugriff von der Vorderseite.

lang:de **score:33** filesize: 370.37 K page\_count: 1 document date: 0000-00-00


[www.graugear.de](http://www.graugear.de)

## Multi Front Panel for 5,25" bay

with USB HUB & Card Reader



**Features**

- Front panel with 4x USB, card reader and audio ports
- 4x 10 Gbps / USB ports, 2x USB Type-C + 2x Type-A
- 1x SD and 1x microSD card reader
- 1x microphone and 1x headphone port
- Fit into a standard 5,25" drive bay

**Not only for fast...**

The front panel with 4x USB, card reader and audio ports, makes it a modern variety of connectivity is available directly at the front. This puts you and to the growing "forward" behind the PC. Besides the standard ports, the GRAUGEAR front panel with USB HUB, card reader and audio ports can be easily and elegantly integrated into a bay 5,25" standard slot in the PC.



**Logistic Data**

Packaging size: 42 x 28 x 10 cm, Net weight of carton: 192 g, Gross weight of product: 302 g, Net weight of product: 302 g  
Dimensions (L x B x H) (mm): 420 x 280 x 100 (mm) (L x B x H) (mm) (L x B x H) (mm)

**Article** G-MP03CR-AU  
**Article No.** 18126  
**BAR/STN** 4262765351036

**System requirements**

- 1x internal USB 3.0 (10 Gbps) host header
- 1x internal USB 3.2 Gen2 (20 Gbps) Key-A (20 Gbps) host header

**Specification**

- PC connection** 1x in 5,25" bay
- Product material** Plastic
- Cable length** 1,57 m
- Dimensions** 148 x 60 x 11 mm
- Weight** 220 g

**Package Contents**

- 1 x G-MP03CR-AU
- 1 x User Manual
- 1 x Service Card
- 1 x Set of Mounting Screws

**QR Code**



## [GRAUGEAR G-MP03CR-AU Multi Front Panel for 5.25" Bay - USB Hub & Card Reader](#)

Enhance your PC with the GRAUGEAR G-MP03CR-AU 5.25" front panel. Features 4x 10Gbps USB ports (2x Type-C, 2x Type-A), SD/microSD card reader, and audio ports. Easy integration for convenient front access.

lang:en **score:32** filesize: 369.45 K page\_count: 1 document date: 0000-00-00