

OIEXI W6

OIEXI 4K Digital Camera

MODEL W6 USER MANUAL

1. Introduction

Thank you for choosing the OIEXI 4K Digital Camera, Model W6. This camera is designed to capture high-quality photos and videos with its 12X optical zoom, 64MP sensor, and 4K video capabilities. It features autofocus, anti-shake technology, a built-in fill light and flash, and can also function as a webcam for live streaming. This manual provides detailed instructions on how to set up, operate, and maintain your camera to ensure optimal performance.

2. What's in the Box

Please check the contents of your package to ensure all items are present:

- OIEXI 4K Digital Camera Body (Model W6)
- 64GB SD Card
- Lithium Ion Battery
- Type-C USB Cable
- Brown Leather Camera Case
- Lens Cap
- Cleaning Cloth
- User Manual

Ideal Gift for Beginners



Image: All items included in the OIEXI 4K Digital Camera package.

3. Setup

3.1 Inserting the Battery and SD Card

1. Locate the battery and SD card compartment on the bottom of the camera.
2. Open the compartment cover.
3. Insert the Lithium Ion battery, ensuring the correct orientation as indicated inside the compartment.
4. Insert the 64GB SD card into the designated slot until it clicks into place. Ensure the card is inserted correctly to avoid damage.
5. Close the compartment cover securely.

3.2 Charging the Battery

- Connect the provided Type-C USB cable to the camera's USB port.

- Connect the other end of the USB cable to a USB power adapter (not included) or a computer's USB port.
- The charging indicator light will illuminate. It will turn off or change color once charging is complete.
- The camera supports dual charging options: via USB-C cable or an external battery charger (not included).

3.3 Initial Power On

Press and hold the Power button located on the top of the camera until the screen illuminates. Follow any on-screen prompts for initial setup, such as setting the date and time.

4. Operating Instructions

4.1 Basic Photography

- **Power On/Off:** Press the power button.
- **Mode Selection:** Use the mode dial or menu to select between photo, video, and other modes.
- **Zoom:** Utilize the zoom lever to adjust the 12X optical zoom for distant subjects. The camera also supports digital zoom.
- **Autofocus:** The camera features autofocus to ensure sharp images. Half-press the shutter button to focus before fully pressing to capture.
- **Flash:** The built-in flash can be activated for low-light conditions.
- **Fill Light:** Use the built-in fill light for additional illumination in dim environments.

12X Optical Zoom

Even at the highest magnification, the picture in the shot is still clear.



16 Digital Zoom



12X

Optical Zoom

12X

Image: The camera's 12X optical zoom maintains clarity even at high magnification.

2024 Latest 4K Digital Camera



Image: Examples of various zoom levels and megapixel outputs from the camera.

4.2 Video Recording

- Switch to video mode.
- Press the record button to start and stop recording 4K UHD video at 30FPS.
- The anti-shake function helps stabilize video footage.
- Supports external microphone connection via 3.5mm jack (microphone not included).
- Video pause function allows for seamless recording breaks.

4.3 Webcam Function for Live Streaming

- Connect the camera to your computer using the USB cable.
- Select "webcam" mode on the camera when prompted.
- The camera can now be used for live streaming, vlogging, online teaching, and video calls.



Image: The camera's versatility as a webcam for various online activities and HDMI output.

4.4 HDMI Output

Connect the camera to a TV or projector using an HDMI cable (not included) to view your photos and videos on a larger screen.

4.5 Wireless Connection (Wi-Fi)

- Download the "VD CAM" app from your device's app store.
- Enable Wi-Fi on the camera and connect your smartphone to the camera's Wi-Fi network.
- Use the app to remotely control the camera for photoshoots and video recording, and to easily transfer photos and videos to your smartphone.

With WIFI Wireless Connection

Easy to Share Photos and Videos



Newest Upgrade Digital Camera for Photograph

Search and download "VD CAM" APP in the app store to remotely control photoshooting and video recording

Image: Easy sharing and remote control via Wi-Fi wireless connection and the VD CAM app.

4.6 Multi-Functional Modes and Features

- **Timestamp:** Add date and time to your photos and videos.
- **Playback:** Review captured media on the camera screen.
- **Exposure Compensation:** Adjust exposure from -3.0 to +3.0.
- **Slow Motion:** Record videos in slow motion.
- **Loop Recording:** Continuously record, overwriting older files when the memory card is full.
- **Continuous Shooting:** Capture a rapid sequence of photos.
- **Timed Shooting:** Set a timer for photos.
- **Filters:** Apply over 20 different filters (e.g., Normal, B&W/Warm, Cold Filter) to enhance your images.
- **Smile Detection:** Automatically capture photos when a smile is detected.
- **Self Vlogging:** Optimized settings for vlogging.

Vlogging Camera With Multifunction Modes



4K VIDEO
RESOLUTION



MAX 64.0
MEGAPXELS



AUTO
FOCUS



12X DIGITAL
ZOOM



SMILE
DETECTION



SELF
VLOGGING



FILL LIGHT



ANTI SHAKE



SLOW MOTION



TIME LAPSE



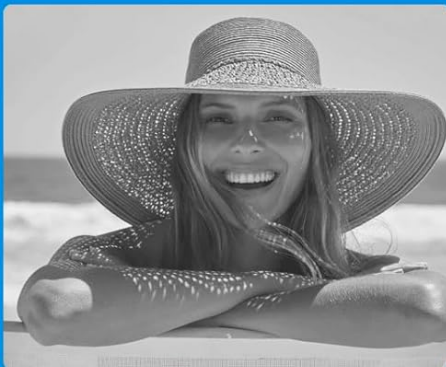
CONTINUOUS
SHOOTING

Image: Overview of the camera's multi-functional modes and features.

MULTIPLE MODES WITH FILTER EFFECTS



Normal



B&W/Warm



Cold Filter



External flash and microphone
are not included

Image: Demonstrating various filter effects available on the camera.



Image: Visual examples of advanced shooting modes like time-lapse, slow-motion, and continuous shooting.

5. Maintenance

5.1 Cleaning the Camera

- Use the provided cleaning cloth to gently wipe the camera body and screen.
- For the lens, use a lens brush or air blower to remove dust, then gently wipe with a specialized lens cleaning cloth and solution if necessary. Avoid touching the lens directly with fingers.
- Do not use harsh chemicals or abrasive materials.

5.2 Battery Care

- Charge the battery fully before first use.
- Avoid exposing the battery to extreme temperatures.
- If storing the camera for an extended period, remove the battery.

5.3 Storage

Store the camera in a cool, dry place, away from direct sunlight and excessive humidity. Use the provided leather case for protection when not in use or during travel.

6. Troubleshooting

Problem	Possible Cause	Solution
Camera does not power on.	Battery is dead or not inserted correctly.	Charge the battery. Reinsert the battery correctly.
Cannot take photos/videos.	SD card is full, locked, or not inserted.	Delete unnecessary files. Unlock the SD card. Reinsert the SD card.
Images are blurry.	Autofocus issue, dirty lens, or camera shake.	Ensure autofocus is engaged. Clean the lens. Use anti-shake function or a tripod.
Wi-Fi connection fails.	Incorrect password, camera Wi-Fi not enabled, or app issue.	Verify password. Enable Wi-Fi on camera. Restart app/camera.

7. Specifications

Feature	Detail
Brand	OIEXI
Model Name	W6 video camera 4k
Item Model Number	W6
Optical Zoom	12 x
Photo Sensor Technology	CMOS
Maximum Webcam Image Resolution	12.99 MP
Supported File Format	JPEG (for photos)
Image Stabilization	Optical
Aspect Ratio	16:9
Batteries	1 Lithium Ion battery (included)
Item Weight	1.74 pounds
Package Dimensions	8.82 x 6.02 x 3.7 inches

8. Warranty and Support

The OIEXI 4K Digital Camera is covered by a manufacturer's warranty. Please refer to the warranty card included in your package for specific terms and conditions. For technical support, troubleshooting assistance, or warranty claims, please contact OIEXI customer service through the contact information provided on the product packaging or the official OIEXI

website.

You can also visit the [OIEXI Store on Amazon](#) for more product information and support resources.

