

ProtoArc XK01 / EM11 NL Combo

ProtoArc XK01 Foldable Bluetooth Keyboard and EM11 NL Ergonomic Mouse Combo

USER MANUAL

1. Introduction

This user manual provides detailed instructions for the setup, operation, maintenance, and troubleshooting of your ProtoArc XK01 Foldable Bluetooth Keyboard and EM11 NL Ergonomic Mouse Combo. Please read this manual thoroughly before using the product to ensure optimal performance and longevity.



The ProtoArc Foldable Bluetooth Keyboard and Ergonomic Mouse Combo, featuring a dark blue foldable keyboard and a matching ergonomic vertical mouse, designed for portable productivity.

2. Product Overview

2.1. ProtoArc XK01 Foldable Bluetooth Keyboard

- **Folding Full-size Design:** 105-key layout with number keypad (Dimensions: 15.19 x 4.68 inch unfolded).
- **Scissor-Switches:** Quiet and responsive keys for fluid, laptop-like typing.
- **Multi-Device Connectivity:** Connects to up to 3 Bluetooth devices.
- **Rechargeable:** Built-in 210 mAh battery with Type-C charging.

100,000 TIMES
Folding Action

5 YEARS
Aluminum Hinges



The ProtoArc XK01 foldable keyboard showcasing its durable aluminum hinges and tri-fold design, highlighting its compact storage and robust construction.



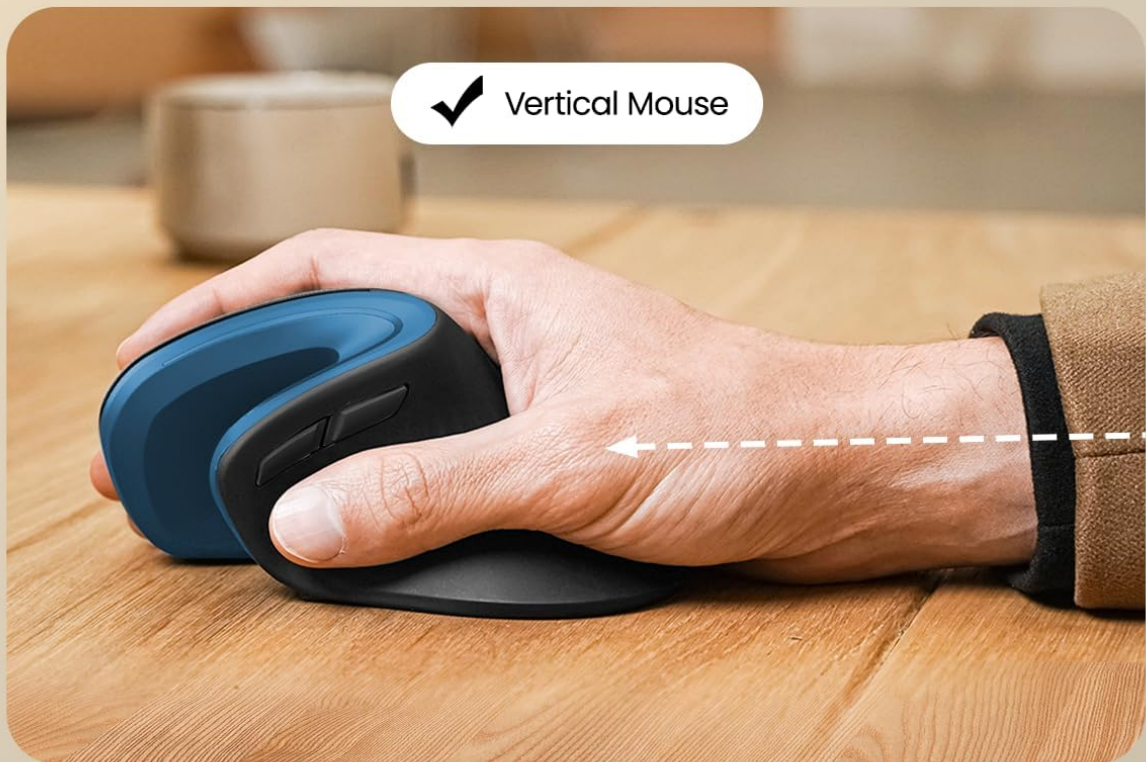
A detailed image showing the stable hinge mechanism of the ProtoArc keyboard, which keeps it flat during typing, and its convenient USB-C charging port.

2.2. ProtoArc EM11 NL Ergonomic Vertical Mouse

- **Ergonomic Design:** Extended wrist rest for natural, relaxed forearm and wrist position.
- **Multi-Device Connectivity:** Dual BT 4.0 and 2.4G USB modes for up to 3 devices.
- **USB-C Rechargeable:** For convenient charging.

Ergonomic Vertical Mouse

Encourages healthy neutral "handshake" wrist arm positions



The ProtoArc EM11 NL ergonomic vertical mouse, designed to encourage a healthy, neutral 'handshake' wrist and arm position, reducing strain during prolonged use.

58° Angle for a Natural Handshake Position

 58°



A visual representation of the ProtoArc EM11 NL mouse's 58-degree vertical angle, engineered to align the wrist and forearm in a more natural, comfortable position.

Type-C Rechargeable

 **90** Days
Stand-by Time

 **4-5** Hours
Charging Time



The ProtoArc EM11 NL ergonomic mouse connected for charging via its USB-C port, indicating its rechargeable battery for extended use.

2.3. Integrated Features

Multi-Device Workflow

BT1 · BT2 · BT3



The ProtoArc keyboard and mouse combo demonstrating multi-device connectivity, allowing seamless switching between up to three devices (smartphone, tablet, laptop) via Bluetooth.



The ProtoArc EM11 NL mouse in a multi-device setup, capable of connecting to and controlling up to three different devices (e.g., tablet, laptop) using 2.4G and Bluetooth.

2.4. Product Videos

Official product video demonstrating the ProtoArc XKM01 Foldable Keyboard and Mouse combo, highlighting its compact design, hard travel case, and suitability for on-the-go productivity.

Official product video showcasing the ProtoArc XK01 True Full-size Foldable Keyboard, emphasizing its full-size layout and portability.

Official product video illustrating the ProtoArc XKM01 Portable Office Suite, demonstrating its use in various travel and business settings.

3. Setup

3.1. Keyboard Setup (Model: XK01)

1. **Unfold the Keyboard:** Gently unfold the keyboard until it lies flat. The magnetic hinges will secure it in the open position.
2. **Power On:** The keyboard automatically powers on when unfolded.
3. **Bluetooth Pairing:**
 - Press and hold the **Fn** key, then press one of the Bluetooth channel keys **BT1**, **BT2**, or **BT3** for 3-5 seconds until the corresponding indicator light flashes.
 - On your device (smartphone, tablet, laptop), go to Bluetooth settings and select "ProtoArc XK01" from the list of available devices.
 - Follow any on-screen prompts to complete the pairing process. The indicator light will stop flashing once connected.
4. **Switching Devices:** To switch between paired devices, simply press the **Fn** key along with the desired Bluetooth channel key (BT1, BT2, or BT3).
5. **Compatibility:** The keyboard is compatible with Windows 8/10/higher, Mac OS X 10.12/higher, and Android 4.3/higher.

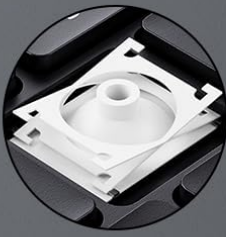
3.2. Mouse Setup (Model: EM11 NL)

1. **Power On/Off:** Locate the power switch on the bottom of the mouse and slide it to the "ON" position.
2. **Connectivity Modes:** The mouse supports dual Bluetooth 4.0 and 2.4G USB connectivity.
 - **2.4G USB Mode:** Insert the USB receiver (located in the mouse's battery compartment) into an available USB port on your device. The mouse should connect automatically.
 - **Bluetooth Mode (BT1/BT2):** Press the mode switch button on the bottom of the mouse to select BT1 or BT2. The corresponding indicator light will flash.
 - On your device, go to Bluetooth settings and select "ProtoArc EM11 NL" from the list of available devices. Follow any on-screen prompts to complete pairing.
3. **DPI Adjustment:** Use the DPI switch button on the top of the mouse (usually near the scroll wheel) to cycle through available DPI settings (e.g., 1000, 1600, 2400) to adjust cursor sensitivity.
4. **Compatibility:** The mouse is compatible with Windows 8/10/higher, Mac OS X 10.12/higher, and Android 4.3/higher.

4. Operating Instructions

4.1. Keyboard Usage

SCISSOR SWITCH KEYS



Scissor-switch structure ensure quite and comfortable typing



Detailed view of the ProtoArc keyboard's low-profile scissor-switch keys, designed to provide a fluid and quiet typing experience, similar to a laptop keyboard.

- **Typing:** The full-size layout and scissor-switch keys provide a comfortable and quiet typing experience.
- **Multimedia Function Keys:** The top row of keys includes dedicated multimedia and function keys (F1-F12). To toggle between standard F-keys and multimedia functions, press **Fn + Esc**.
- **Number Pad:** Utilize the integrated number pad for efficient data entry.

4.2. Mouse Usage

- **Ergonomic Comfort:** Position your hand naturally on the vertical mouse to reduce wrist and forearm strain.
- **Scrolling and Clicking:** Use the scroll wheel for navigation and the left/right buttons for standard

mouse functions.

- **Multi-Device Switching:** Use the mode switch button on the bottom of the mouse to seamlessly switch control between your paired devices.

5. Maintenance

- **Charging:**
 - **Keyboard:** Connect the provided Type-C charging cable to the keyboard's charging port. A full charge provides approximately 5 months of standby time.
 - **Mouse:** Connect the provided Type-C charging cable to the mouse's charging port. A full charge provides approximately 90 days of standby time.
- **Cleaning:** Use a soft, dry cloth to clean the surfaces of the keyboard and mouse. Avoid using harsh chemicals or abrasive materials.
- **Storage:** When not in use, fold the keyboard for compact storage. The combo often comes with a hard travel case for protection during transport.

6. Troubleshooting

- **Device Not Connecting:**
 - Ensure both the keyboard and mouse are powered on and fully charged.
 - Verify that Bluetooth is enabled on your device.
 - Attempt to re-pair the device by following the setup instructions.
 - For the mouse, ensure the correct connectivity mode (2.4G or Bluetooth) is selected.
- **Keys/Mouse Not Responding:**
 - Check battery levels and recharge if necessary.
 - Restart the keyboard/mouse and your connected device.
 - Ensure the devices are within the effective operating range (typically 10 meters).
- **Cursor Movement Issues (Mouse):**
 - Adjust the DPI setting using the DPI button on the mouse.
 - Ensure the mouse is used on a suitable surface.

7. Specifications

Feature	Detail
Brand	ProtoArc
Keyboard Model	XK01
Mouse Model	EM11 NL
Connectivity Technology	Bluetooth, Wireless (with USB receiver for mouse)
Compatible Devices	Laptop, Personal Computer, Smartphone, Tablet



XK01 Plus
User Manual
Backlit Full-Size Wireless Keyboard

www.protoarc.com
US: support@protoarc.com
UK: support-uk@protoarc.com
Support Hours: 9 AM - 5 PM (GMT+8)
Monday-Friday, 10am-7pm, 9am-7pm (Eastern Time) Closed during holidays

[ProtoArc XK01 Plus Keyboard User Manual](#)

User manual for the ProtoArc XK01 Plus foldable backlit Bluetooth keyboard, detailing setup, features, connectivity, and usage instructions.