

TopWit XK2001-1

TOPWIT Electric Hot Pot with Steamer User Manual

Model: XK2001-1

Brand: TopWit

1. PRODUCT OVERVIEW

The TOPWIT Electric Hot Pot with Steamer is a versatile and portable cooking appliance designed for various culinary tasks. Its compact size and dual power settings make it ideal for small kitchens, dorm rooms, offices, and travel.

1.1 Components

- Electric Hot Pot (2.1 Quarts / 2 Liters capacity)
- Transparent Steamer Basket
- Glass Lid
- Silicone Spatula (included)

1.2 Key Features

- **Cook Below & Steam Above:** Allows simultaneous cooking and steaming, saving time.
- **Dual Power Setting:** Two power levels (250W and 600W) for diverse cooking needs.
- **Portable Design:** Moderately sized for easy use, carrying, and storage.
- **Healthy Non-Stick Coating:** PFOA-free and BPA-free inner surface for easy cleaning and healthier cooking.
- **Dual Safety Protection:** Features overheat protection and dry-boil protection for safe operation.
- **Long Handle Design:** Provides a comfortable and labor-saving grip.



Image 1.1: Overview of the TOPWIT Electric Hot Pot with Steamer and included silicone spatula.

2.0L CAPACITY

Suitable for 1~3 people

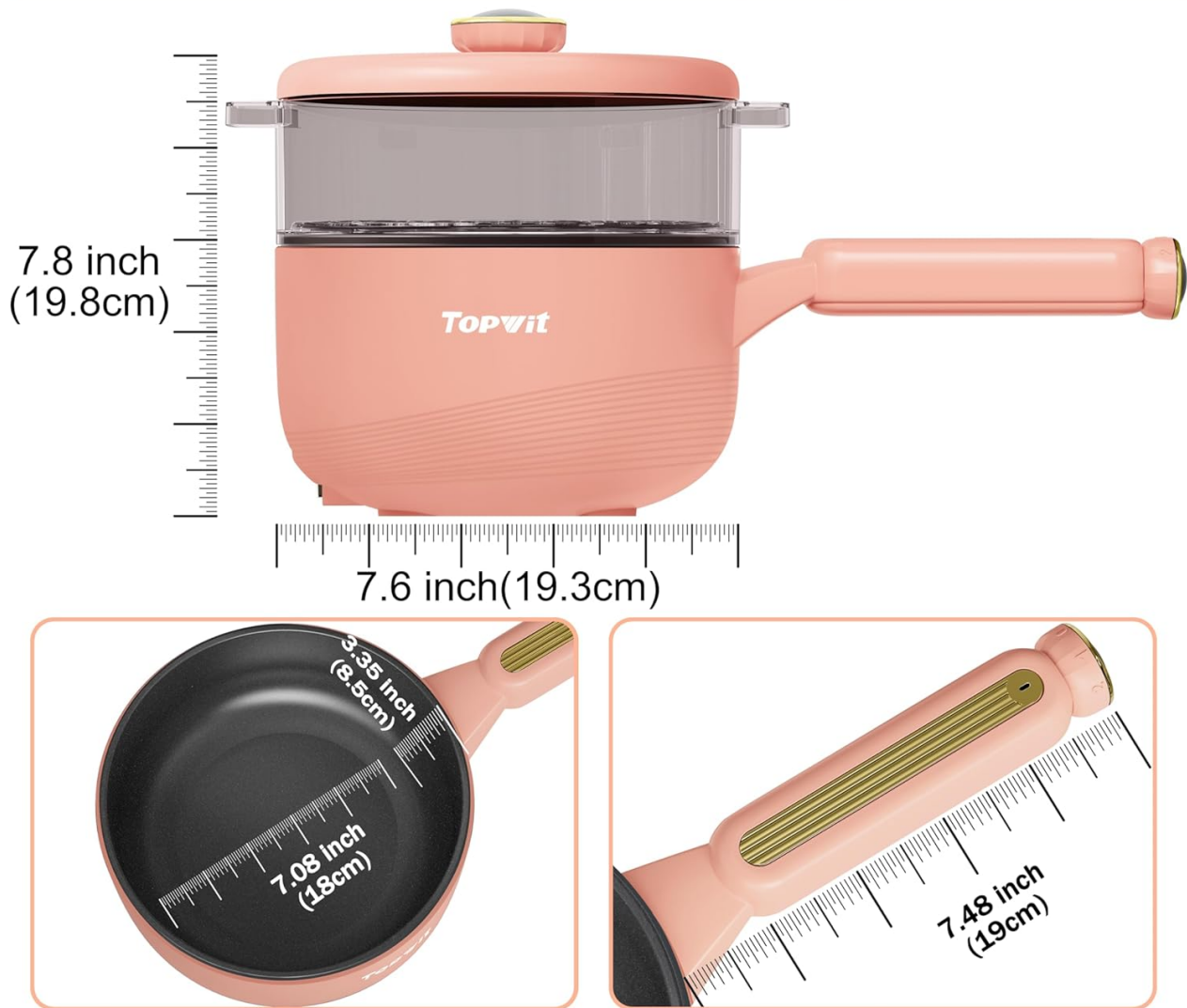


Image 1.2: Detailed dimensions of the electric hot pot, showing its 2.0L capacity, 7.6-inch depth, 7.08-inch inner diameter, and 7.48-inch handle length.

2. SAFETY INSTRUCTIONS

- Read all instructions before using the appliance.
- Do not immerse the main body of the electric pot in water or other liquids to prevent electric shock. The electrical components are integrated into the base.
- Ensure the voltage rating of the appliance matches your local power supply before plugging in.
- Always unplug the appliance from the outlet when not in use and before cleaning. Allow it to cool down completely before handling.
- Do not operate any appliance with a damaged cord or plug, or after the appliance malfunctions or has been damaged in any manner.
- Keep the appliance out of reach of children. Close supervision is necessary when any appliance is used by or near children.
- Avoid touching hot surfaces. Use handles or knobs.
- Do not place the appliance on or near a hot gas or electric burner, or in a heated oven.
- Use only attachments recommended or sold by the manufacturer.

- Do not use outdoors.
- Exercise extreme caution when moving an appliance containing hot oil or other hot liquids.
- The appliance features overheat protection and dry-boil protection. If the pot overheats or boils dry, it will automatically shut off.

3. SETUP

3.1 Before First Use

1. Unpack the electric hot pot and all its components.
2. Wash the non-stick inner pot, steamer basket, and glass lid with warm, soapy water. Rinse thoroughly and dry completely.
3. Wipe the exterior of the main unit with a damp cloth. Do not submerge the main unit in water.
4. Ensure all parts are dry before plugging in the appliance.

4. OPERATING INSTRUCTIONS

4.1 Dual Power Control

The TOPWIT Electric Hot Pot features a dual power setting, allowing you to adjust the heat according to your cooking needs:

- **Low Power (250W):** Ideal for gentle cooking such as making fried eggs, ramen, or oatmeal.
- **High Power (600W):** Suitable for faster cooking tasks like searing steak, preparing hot pot, or stir-frying vegetables.

To select the desired power level, rotate the control knob located on the handle.

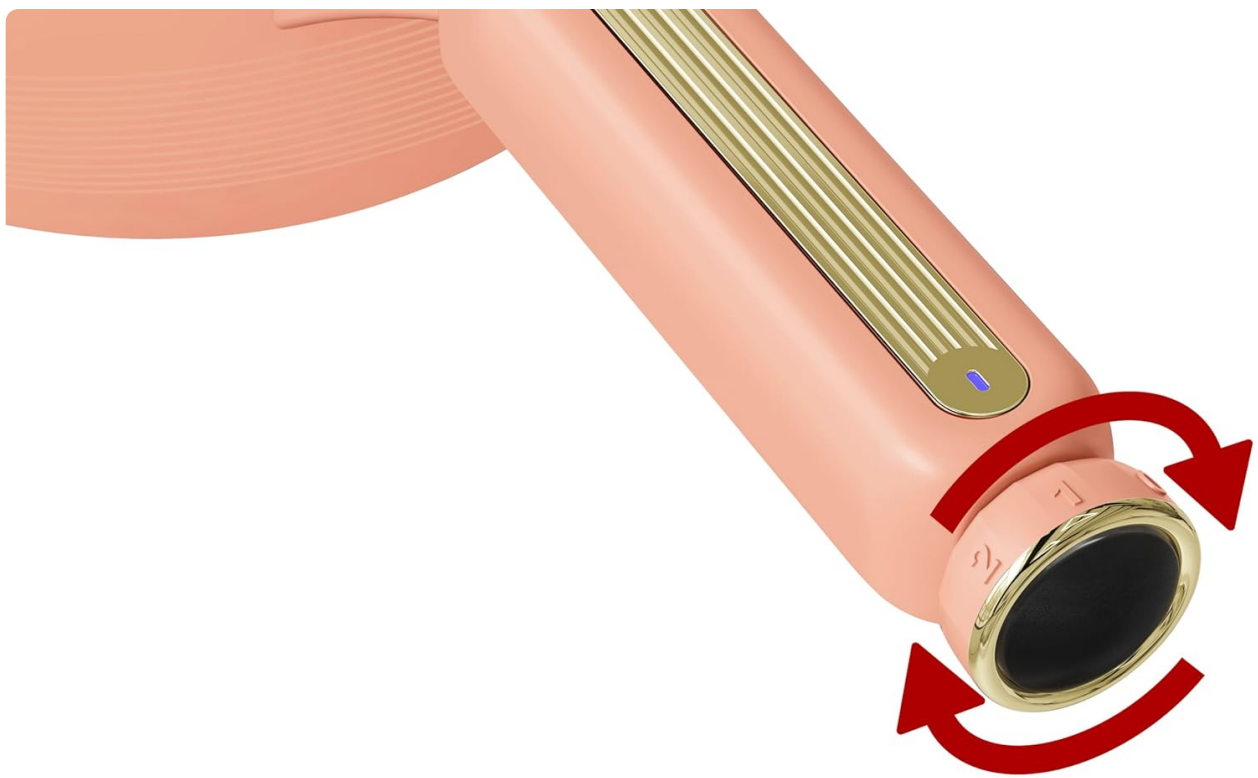


Image 4.1: Illustration of the dual power control knob and examples of dishes suitable for each setting (250W for ramen, egg, oats; 600W for steak, hot pot, soup).

4.2 Cooking Functions

This multi-use electric pot can perform various cooking functions:

- Frying
- Sautéing
- Braising
- Stir-frying
- Boiling (e.g., ramen, soup)
- Hot Pot

MULTI-USE ELECTRIC POT



Hot Pot



Steak



Spaghetti



Fried Chips

Image 4.2: Examples of dishes prepared in the electric hot pot, including hot pot, steak, spaghetti, and fried chips.

4.3 Using the Steamer

The transparent steamer basket allows for simultaneous steaming above while cooking below. This feature is ideal for preparing complete meals efficiently.

1. Add water to the main pot (ensure it does not exceed the maximum fill line).
2. Place food to be steamed in the steamer basket.
3. Position the steamer basket securely on top of the main pot.
4. Cover with the glass lid.
5. Select the desired power setting and begin cooking/steaming.

VISIBLE FOOD-GRADE STEAMER

always keep track of food status



Image 4.3: The transparent steamer in use, demonstrating the "Steam Above & Cook Below" functionality.

4.4 Product Demonstration Video

Your browser does not support the video tag.

Video 4.1: An official demonstration video showcasing the features and various cooking capabilities of the TOPWIT 2.0L Electric Pot with Steamer, including its long handle design, dual power setting, transparent steamer, non-stick coating, and ability to prepare spaghetti, steak, and hot pot.

5. MAINTENANCE AND CLEANING

Proper maintenance ensures the longevity and performance of your TOPWIT Electric Hot Pot.

5.1 Cleaning the Non-Stick Pot

- After each use, unplug the appliance and allow it to cool completely before cleaning.
- The upgraded non-stick coating on the inner surface prevents food from sticking, making cleanup easy.
- Clean the inner pot with water and a soft sponge. Avoid abrasive cleaners or scouring pads that could damage the non-stick surface.

- For stubborn food residue, soak the pot in warm soapy water for a few minutes before cleaning.
- Do not submerge the main body of the electric pot in water. Wipe the exterior with a damp cloth.
- Ensure the pot is completely dry before storing.

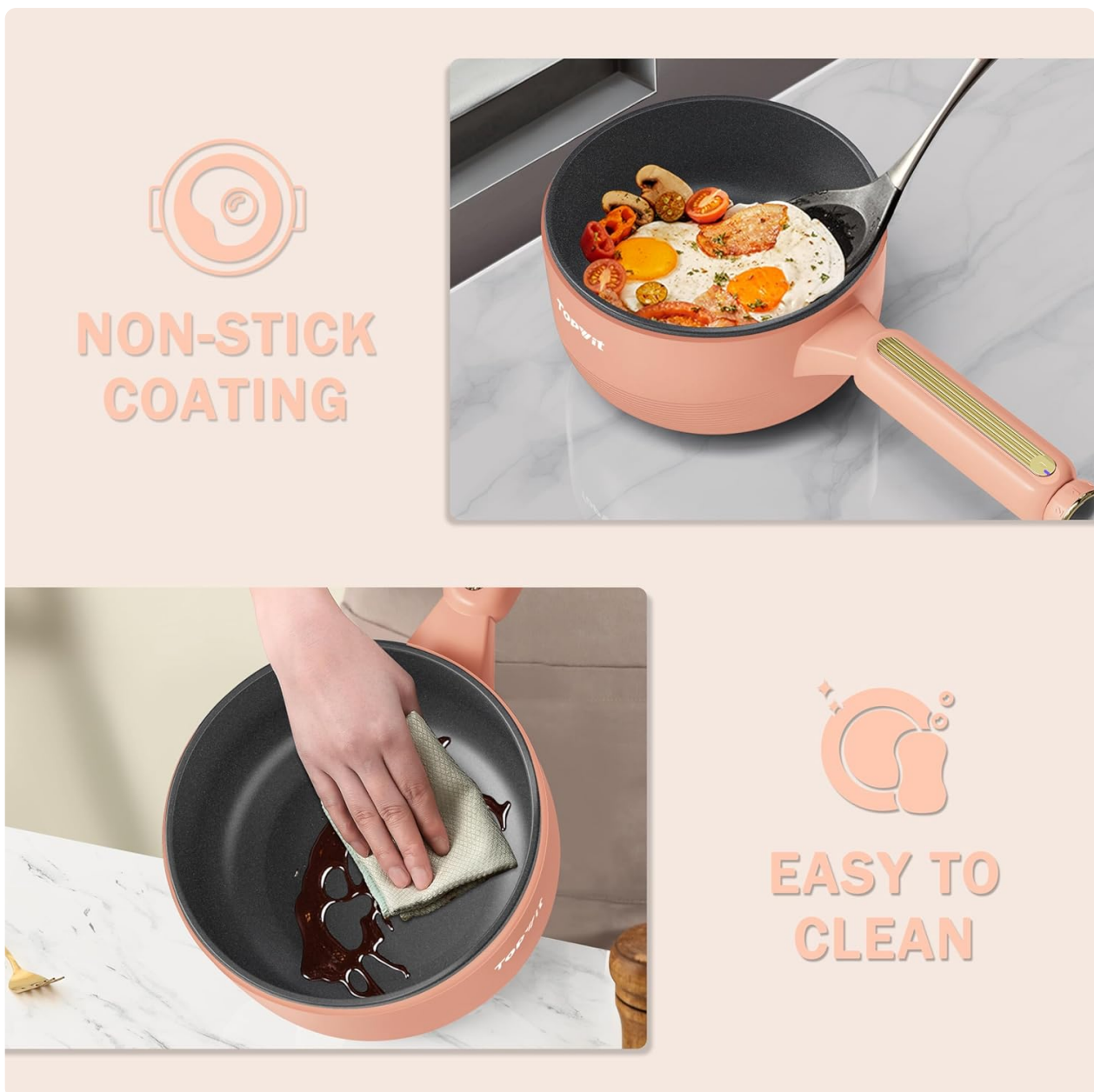


Image 5.1: Demonstration of cleaning the non-stick inner pot with a soft sponge, highlighting its easy-to-clean surface.

6. TROUBLESHOOTING

Problem	Possible Cause	Solution
Appliance does not turn on.	Not plugged in; power outlet malfunction; overheat protection activated.	Ensure the power cord is securely plugged into a working outlet. Allow the unit to cool down if it was recently used or if dry-boil protection was triggered.
Food sticking to the pot.	Insufficient oil/liquid; cooking at too high a temperature for too long; damaged non-stick coating.	Ensure adequate oil or liquid is used. Adjust power setting. Avoid using metal utensils that can scratch the coating.


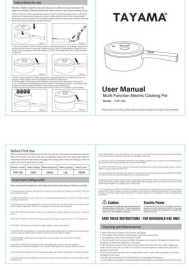


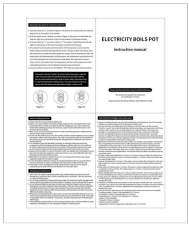

Problem	Possible Cause	Solution
Steam/water leaking from lid.	Lid not properly seated; condensation.	Ensure the lid is placed correctly and securely. This can be normal condensation, but ensure the pot is not overfilled.
Unusual odor during first use.	Manufacturing residues burning off.	This is normal for first use. Ensure good ventilation. The odor should dissipate after a few uses.

7. SPECIFICATIONS

Attribute	Detail
Brand	TopWit
Model Number	XK2001-1
Capacity	2 Liters (2.1 Quarts)
Material	Plastic Shell & Non-stick Inner Pot
Color	Peach 1
Product Dimensions (D x W x H)	7.6"D x 14.56"W x 7.8"H
Wattage	600 watts
Voltage	110 Volts
Control Method	Touch (Rotary Knob)
Operation Mode	Automatic
Item Weight	3.69 pounds
Special Features	Long Handle Design, Transparent Steamer, Overheat Protection, Dry-boil Protection

8. WARRANTY AND SUPPORT

For warranty information and customer support, please refer to the product packaging or contact TopWit customer service directly. Keep your purchase receipt for any warranty claims. You can visit the official TopWit store for more information:[TopWit Store](#)

	<p>TYEMUI ZG-T27 Multifunctional Electric Hot Pot User Manual Cooking Guide</p> <p>Comprehensive user manual for the TYEMUI ZG-T27 Multifunctional Electric Hot Pot. Learn about product parameters, functions like boiling water and frying steak, safety precautions, cleaning, maintenance, and material information.</p>
	<p>TAYAMA THP-150 Multi-Function Electric Cooking Pot User Manual</p> <p>User manual for the TAYAMA THP-150 Multi-Function Electric Cooking Pot, providing instructions for use, important safety precautions, and cleaning and maintenance guidelines.</p>
	<p>Kingbull 12-in-1 Electric Pressure Cooker User Manual</p> <p>This document provides instructions and specifications for the Kingbull 12-in-1 Electric Pressure Cooker, a versatile kitchen appliance that functions as a pressure cooker, slow cooker, rice cooker, steamer, sauté pan, yogurt maker, and warmer.</p>
	<p>Instant Pot Duo 7-in-1: Frequently Asked Questions and Usage Guide</p> <p>Comprehensive FAQ and usage guide for the Instant Pot Duo 7-in-1 electric pressure cooker, covering features, cooking tips, safety, and materials.</p>
	<p>NICAI Kitchen Electric Hot Pot: Instruction Manual and Operating Guide</p> <p>Comprehensive instruction manual for the NICAI Kitchen Electric Hot Pot. Learn about operating instructions, safety precautions, cleaning, and intelligent reservation panel functions for your electric cooker.</p>
	<p>CERAMAX Electric Cooker 1.6 Quart - Safe & Easy Cooking</p> <p>Discover the CERAMAX Electric Cooker (Model MDG-01/6390), a lightweight, portable 1.6-quart electric hot pot with a nonstick ceramic interior. Features 2 temperature settings, easy cleaning, and safety instructions from EMSON.</p>