

eMACROS HS006

eMACROS Safeguard Wireless Driveway Alarm User Manual

Model: HS006

Brand: eMACROS

1. PRODUCT OVERVIEW

The eMACROS Safeguard Wireless Driveway Alarm system provides reliable motion detection for your property, offering enhanced security and peace of mind. Featuring advanced SST PIR Technology, it significantly reduces false alarms while ensuring a wide 1/2 mile detection range in open areas. The system includes a weatherproof motion sensor and a rechargeable receiver with 7-day backup power, ensuring continuous operation even during power outages or extended cloudy periods. With 38 selectable chimes, you can customize alerts to suit your preferences.



Figure 1.1: Overview of the eMACROS Safeguard Wireless Driveway Alarm system components.

2. PACKAGE CONTENTS

The eMACROS Safeguard Wireless Driveway Alarm package includes all necessary components for immediate setup and operation:

- 1 x Rechargeable Receiver
 - 1 x Solar Motion Sensor
 - 1 x Adapter & USB Cable (for receiver charging)
 - 1 x Screw Bag (for mounting)
 - 1 x User Manual
-

3. SETUP

Follow these steps to set up your eMACROS Driveway Alarm system:

1. **Charge the Receiver:** Connect the receiver to the power adapter using the provided USB cable. Ensure it is fully charged before initial use. The receiver has a 7-day backup power capability.
2. **Charge the Sensor:** The solar sensor is powered by a rechargeable battery that is continuously charged by its integrated solar panel. For optimal performance, ensure the sensor receives adequate sunlight.
3. **Mount the Sensor:** Choose a suitable outdoor location for the solar sensor, such as a tree or fence post. The sensor should be installed at a height of 3-4 feet for detecting people and 2-3 feet for detecting vehicles, keeping it level and perpendicular to the ground for best results. Use the provided screw bag for mounting.
4. **Pairing (if necessary):** The system typically comes pre-paired. If re-pairing is needed, refer to the "How to pair the receiver with sensor?" video below for detailed instructions.

Long Transmission Range

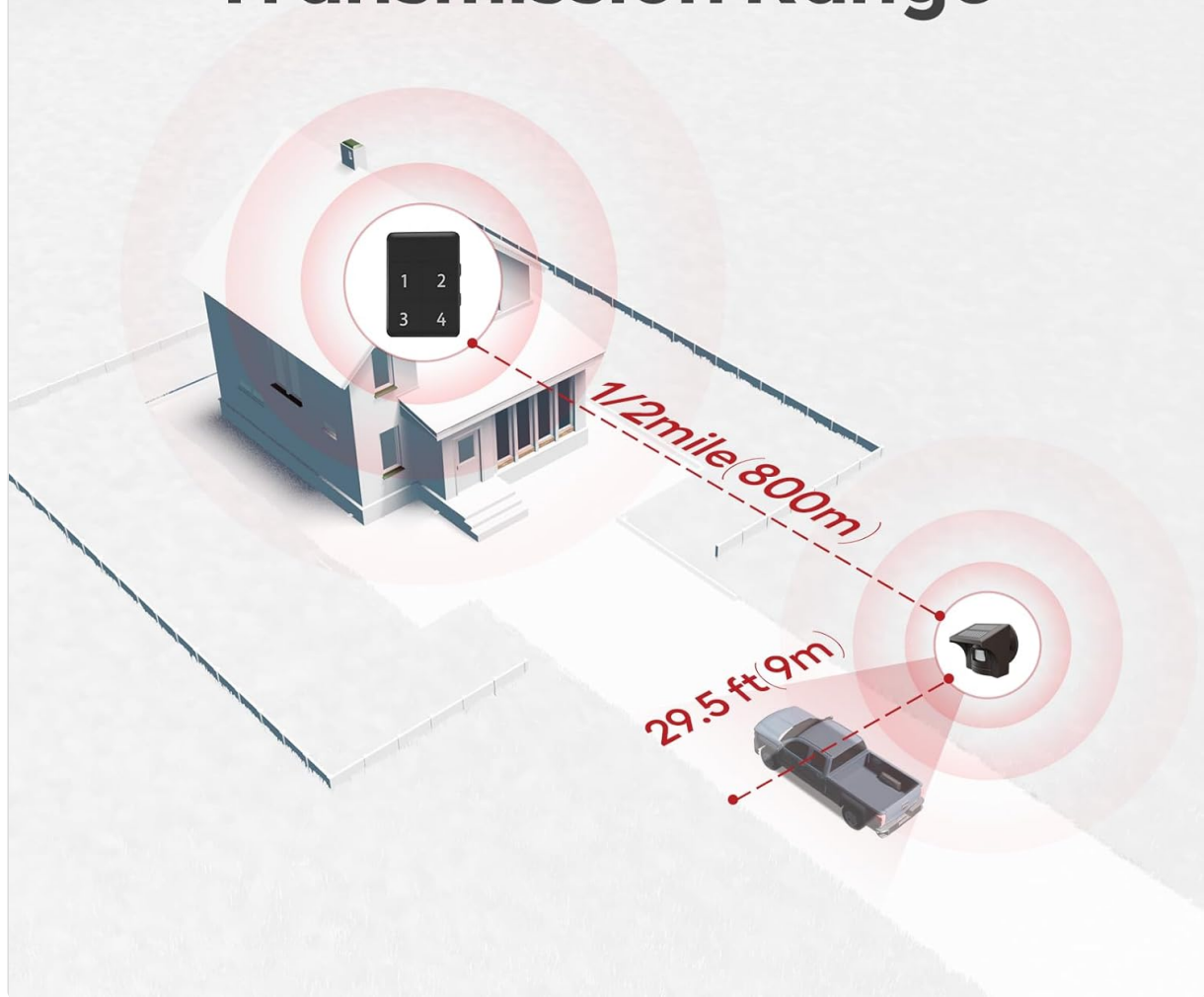


Figure 3.1: Easy setup of the solar motion sensor on an outdoor surface.

Your browser does not support the video tag.

Video 3.2: Official eMACROS guide on how to pair the receiver with the sensor.

4. OPERATING INSTRUCTIONS

Once set up, the eMACROS Driveway Alarm operates automatically. The solar sensor detects motion and sends a signal to the receiver, which then emits an audible chime.

- **Detection:** The sensor utilizes SST PIR Technology for accurate motion detection, minimizing false alarms. It has an impressive 1/2 mile detection range in open areas.
- **Chimes:** The receiver offers 38 different chimes. You can select your preferred chime and adjust the volume using the controls on the receiver unit.
- **Zone Indication:** If multiple sensors are used, the receiver will indicate which zone (1-4) has detected motion, allowing you to pinpoint the location of activity.

Rechargeable Battery Base Station

Outage-Proof Power, Always On — 7-Days Battery Backup

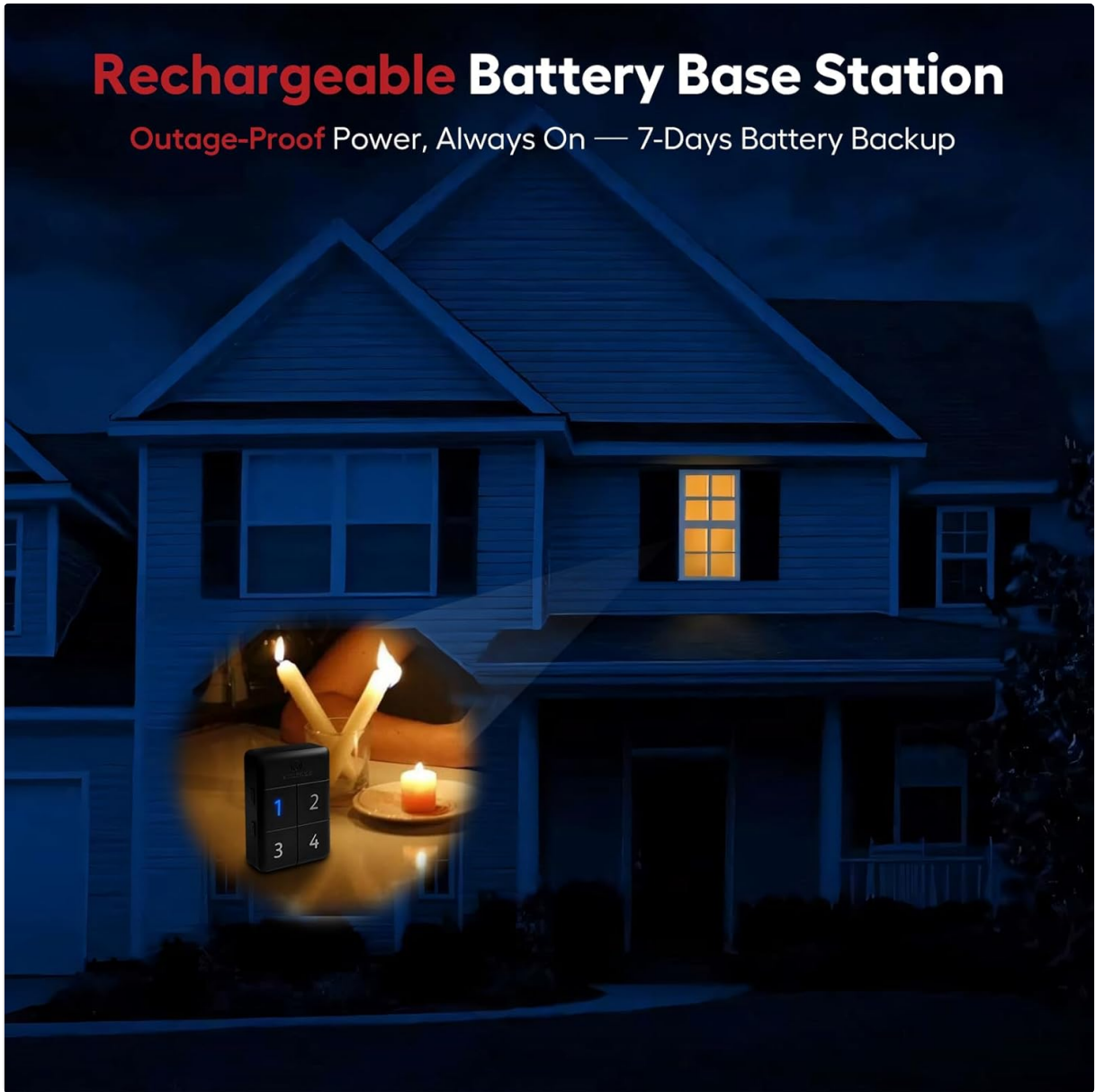


Figure 4.1: The system boasts a 1/2 mile (800m) transmission range between the sensor and receiver.

5. MAINTENANCE

The eMACROS Driveway Alarm is designed for minimal maintenance due to its robust construction and solar charging capabilities.

- **Weather Resistance:** The sensor has an upgraded IP65 waterproof rating, ensuring durability and reliable operation in all weather conditions, including rain, snow, and extreme temperatures.
- **Battery Life:** The solar panel keeps the sensor's battery charged, eliminating the need for manual battery replacement. The receiver's internal battery provides 7-day backup power.
- **Cleaning:** Periodically wipe the solar panel and sensor lens with a soft, damp cloth to ensure optimal performance and charging efficiency.



Figure 5.1: The IP65+ rating ensures the sensor withstands various weather conditions.

6. TROUBLESHOOTING

If you encounter issues with your eMACROS Driveway Alarm, consider the following common solutions:

- **No Alarm/Missing Alarms:**

- Check if the sensor is powered on and fully charged (ensure adequate sunlight exposure).
- Verify the sensor's placement; ensure it's facing the detection area and not obstructed.
- Re-pair the sensor and receiver if they lose connection.

- **False Alarms:**

- Adjust the sensor's sensitivity switch (High/Low) to a lower setting.
- Ensure the sensor is not directly exposed to sunlight or strong light sources, which can cause false triggers.
- Trim any branches or foliage that might be moving in front of the sensor.

- **Continuous Alarms:**

- This often indicates a continuous motion source. Check for pets, moving objects, or strong

winds in the detection zone.

- Adjust sensor placement or sensitivity.



Figure 6.1: SST PIR Technology helps reduce false alarms by 80% compared to older models.

7. SPECIFICATIONS

Feature	Detail
Brand	eMACROS
Model Number	HS006
Power Source	Rechargeable Battery Powered & Solar Power
Connectivity Technology	Wireless
Installation Type	Screw-In
Alert Type	Audio & Motion
Maximum Range	2624 Feet (approx. 1/2 Mile)

Waterproof Rating	IP65
Battery Life (Sensor)	2 years (with solar charging)
Receiver Backup Power	7-Day Internal Battery
Chimes	38 selectable chimes

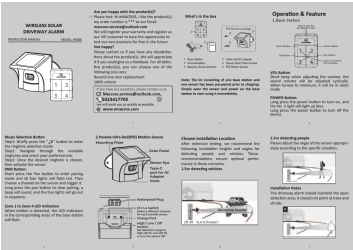
8. WARRANTY AND SUPPORT

For product support, troubleshooting assistance, or warranty inquiries, please contact eMACROS customer service:

- **Email:** eMacros.service@outlook.com
- **Phone:** 502-342-7705
- **Website:** www.emacros.com

eMACROS is committed to customer satisfaction. If you are not happy with the product, you may register your warranty and contact them for assistance or a 100% refund.

Documents - eMACROS – HS006



[\[pdf\]](#) User Manual Documentation Warranty

12 6 HS006 297x210mm fcc Users Manual Shenzhen Macross Automation Technology Co Ltd
HS006 WIRELESS SOLAR DRIVEWAY ALARM 2AXOF 2AXOFHS006 hs006

WIRELESS SOLAR DRIVEWAY ALARM INSTRUCTION MANUAL MODEL: **HS006**

Are you happy with the product s / Please text: Hi eMACROS, I like the product s , my order number is *** to our Email: macross.service@outlook.com We will register your warranty and register as our VIP customer to have the opportun...

lang:en score:34 filesize: 1.64 M page_count: 2 document date: 2024-12-06



HS-006W Driveway Alarm With Phone App



QUICK START GUIDE

[Hosmart HS-006W Driveway Alarm with Phone App Quick Start Guide](#)

This guide provides instructions for setting up and using the Hosmart HS-006W Driveway Alarm with Phone App. It covers product overview, base station and solar sensor setup, LED indicators, troubleshooting, technical specifications, and safety information.

lang:en score:22 filesize: 5.02 M page_count: 27 document date: 2025-06-28