

hohem hohem X3

hohem iSteady x3 Gimbal Stabilizer User Manual

Brand: hohem | Model: hohem X3

INTRODUCTION

This manual provides detailed instructions for the hohem iSteady x3 Gimbal Stabilizer. Designed for smartphones, this 3-axis foldable gimbal features an AI tracker, a 3-color fill light, a detachable remote control, and a built-in extension rod with a tripod. Please read this manual thoroughly to ensure proper use and maintenance of your device.



Image: Overview of the hohem iSteady x3 Gimbal Stabilizer and its included accessories.

WHAT'S IN THE BOX

Verify that all items listed below are included in your package:

- hohem iSteady x3 Smartphone Gimbal (x1)
- Detachable Remote Controller (x1)
- Magnetic Fill Light (x1)
- USB-C Charging Cable (x1)
- Hex Key (x1)
- Storage Pouch (x1)
- Quick Start Guide (x1)
- Warranty Card (x1)



Cool / Neutral / Warm



3-Color Temperature

Switch between three color temperatures at will, enhancing your shots of every scene.



☐ Cool 6500K



☐ Neutral 5000K





Image: All items included in the hohem iSteady x3 package.

SETUP GUIDE

Unfolding and Mounting Your Smartphone

1. **Unfold the Gimbal:** Gently pull the arm of the gimbal as shown in the diagram to unfold it into its operational position.
2. **Mount Your Smartphone:** Stretch the phone clamp to adapt to your smartphone's width. Carefully attach your phone to the center of the clamp, ensuring it is securely balanced.
3. **Power On/Off:** Long press the power button (usually located on the handle) to turn the gimbal on or off.

Portable and Foldable

Compact and lightweight, your go-anywhere photography companion. Just fold and tuck it into your pocket or bag after shooting.



Image: Visual guide for unfolding the gimbal and securely mounting a smartphone.

Folding and Storage

To fold the gimbal for compact storage:

1. Ensure the gimbal is powered off.
2. Detach your smartphone from the phone clamp.
3. Rotate the gimbal arm to a proper angle to allow for folding.
4. Fold the arm and push the tripod legs inward until they are flush with the handle.

Your browser does not support the video tag.

Video: Demonstrates the process of folding the hohem iSteady x3 gimbal for storage, including detaching the phone and collapsing the tripod legs.

OPERATING INSTRUCTIONS

Detachable Remote Control

The iSteady x3 features an innovative magnetic detachable remote control, allowing for easy selfies and control within 10 meters (32.8 feet). The remote can be used standalone or attached to the handle for instant charging.

Magnetic Design



Instant Charging

Snap it into the handle, and it's ready for an instant charging, keeping you free from low battery anxiety.



Image: The magnetic detachable remote control being charged by snapping it into the gimbal handle.

Detachable Design

Go Solo, Take Selfies.

Easily handle selfies within 10m (32.8ft), making every shot as perfect as you want it to be.





Image: A user demonstrating the use of the detachable remote control for taking selfies.

Magnetic Fill Light

Enhance your shots with the magnetic fill light, offering three color temperature options: cold (6500K), warm (2700K), and neutral (5000K). Brightness can be precisely controlled from 4% to 100% using the new side wheel design, providing up to 120lux@0.5M.

02 Magnetic Fill Light



Image: The magnetic fill light accessory for the hohem iSteady x3.

Packing List





Magnetic Fill Light

iSteady X3 Gimbal

Remote Controller



Type-C Charging Cable



Hex Key



Storage Pouch



Quick Start Guide



Warranty Card

Image: Examples of the fill light in cool, neutral, and warm color temperatures.

3-Axis Stabilization and AI Tracking

The iSteady X3 features next-gen iSteady 8.0 stabilization, ensuring smooth and steady footage during dynamic movements. The AI Tracker provides seamless person and object tracking, keeping your subject in focus at all times.

05

3-Axis Stabilization

2024

iSteady 8.0





Image: Illustration of the 3-axis stabilization technology within the gimbal.

Person Tracking

Seamless Smart Tracking



Whether the phone camera is moving or the person is in motion, smart tracking precisely keeps the target in focus at all times.



* Used within Hohem Joy app.

Image: The gimbal's AI person tracking feature in action, keeping a subject in frame.

Object Tracking

More Possibilities and Fun



Be it a basketball, a coffee cup, or your hand movements and personal items, simply frame the target for accurate tracking.



* Used within Hohem Joy app.

* Objects need a clear, consistent shape and sufficient size to be easily recognized.

Image: The gimbal's AI object tracking feature, demonstrating its ability to follow non-human subjects.

Built-in Extension Rod and Tripod

Capture wider shots and unique angles with the built-in 205mm extension rod. The integrated tripod allows for stable, hands-free shooting at fixed points without additional accessories.

Remote Control

Data Transmission	Bluetooth
Control Distance	10m (32.8ft)

Magnetic Fill Light (available on iSteady X3)

Size	42 x 16.5 x 25mm (1.65 x 0.65 x 0.98 inches)
Weight	10.5g (±1g)
Illuminance	120lux@0.5M
CCT	6500K (Cool light), 5000K (Neutral light), 2700K (Warm light)

Battery

Capacity	7.4V/1100mAh
Runtime	Approx. 11 hours (Balanced and stationary) Approx. 4 hours (Used with the fill light at maximum brightness) *Data sourced from Hohem Laboratory
Charging Time	2 hours (5V–2A)

Image: The gimbal's adjustable hinge and extension rod for mastering various shooting angles.

Hohem Joy App Features

Unlock full creative potential by integrating your iSteady x3 with the Hohem Joy APP. Features include:

- **AI Tracking:** Advanced person and object tracking.
- **Creative Studio:** Discover tailored shooting techniques and camera movements.
- **Moment Mode:** Record movies with templates like Inception, Dolly Zoom, and Panorama.

Expansion Port

A 1/4"-20 screw hole is reserved on the bottom of the gimbal, allowing for attachment of various accessories such as straps or additional tripods, expanding your shooting possibilities.

In the Box



Image: The 1/4"-20 screw hole expansion port on the hohem iSteady x3.

Phone Compatibility

The iSteady X3 supports a wide range of smartphones. Refer to the table below for specific compatibility details regarding camera features and resolutions.



Detachable Design

Go Solo, Take Selfies

Easily handle selfies within 10m (32.8ft), making every shot as perfect as you want it to be.

Image: Detailed compatibility list for various smartphone models and their supported features with the gimbal.

MAINTENANCE

Battery Life and Charging

The iSteady X3 offers approximately 11 hours of continuous operation in a balanced and stationary state. With the fill light at maximum brightness, the runtime is about 4 hours. A full charge takes approximately 2 hours (using 5V-2A input).

Unfolding & Mounting

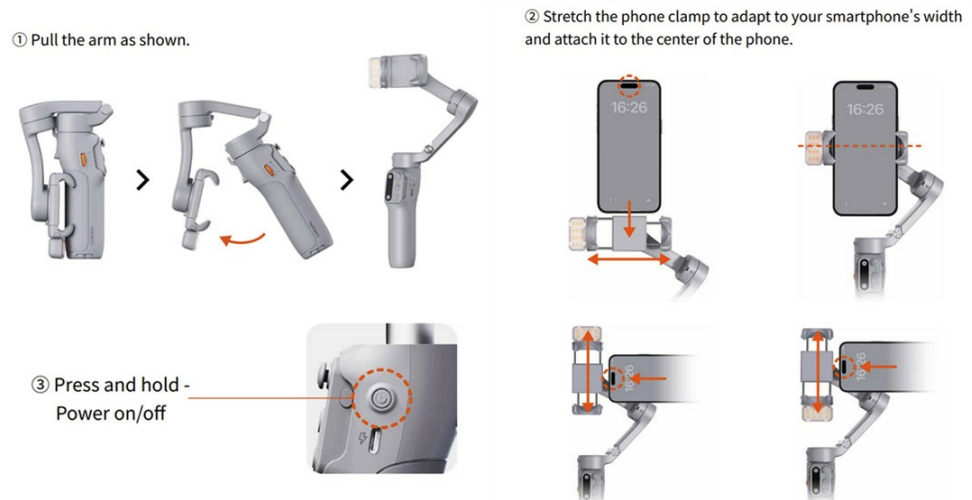


Image: Visual representation of the gimbal's extended battery life.

General Care

- Keep the gimbal clean and free from dust and debris.
- Avoid exposing the device to extreme temperatures or moisture.
- Store the gimbal in its storage pouch when not in use to prevent scratches.
- Do not attempt to disassemble the gimbal, as this will void the warranty.

TROUBLESHOOTING

If you encounter issues with your hohem iSteady x3, consider the following common solutions:

- **Gimbal Not Powering On:** Ensure the battery is sufficiently charged. Connect the USB-C charging cable and allow it to charge for at least 15 minutes before attempting to power on again.
- **Unstable Footage:** Verify that your smartphone is securely mounted and properly balanced in the center of the clamp. Ensure the gimbal is powered on and calibrated correctly via the Hohem Joy App.
- **Remote Control Not Responding:** Check if the remote control is charged. Re-pair the remote control with the gimbal according to the instructions in the Hohem Joy App. Ensure you are within the 10-meter operating range.
- **App Connection Issues:** Ensure Bluetooth is enabled on your smartphone and the Hohem Joy App has the necessary permissions. Restart both the gimbal and the app, then attempt to reconnect.
- **Motor Protection Activated:** If the gimbal motors stop responding, it might be due to improper operation or an obstruction. Power off the gimbal, remove any obstructions, and restart.

For further assistance, please refer to the official hohem support resources or contact customer service.

SPECIFICATIONS

Feature	Detail
Model Number	hohem X3
Product Dimensions (Unfolded)	5 x 6.31 x 2.55 inches (127 x 65 x 312mm)
Folded Size	3.86 x 1.73 x 6.32 inches (98 x 44 x 160.5mm)
Item Weight	14.5 ounces (411 Grams)
Maximum Payload	300 Grams
Smartphone Thickness Supported	≤12.5mm
Smartphone Width Supported	58mm-98mm
Controllable Range (Pan)	–120° to 210°
Controllable Range (Roll)	–135° to 135°
Controllable Range (Tilt)	–35° to 45°
Working Temperature	–10°C to 45°C (14°F to 113°F)
Remote Control Data Transmission	Bluetooth
Remote Control Distance	10m (32.8ft)
Magnetic Fill Light Size	1.65 x 0.65 x 0.98 inches (42 x 16.5 x 25mm)
Magnetic Fill Light Weight	10.5g (±1g)
Magnetic Fill Light Illuminance	120lux@0.5M
Magnetic Fill Light CCT	6500K (Cool light), 5000K (Neutral light), 2700K (Warm light)

Feature	Detail
Battery Capacity	7.4V/1100mAh
Battery Runtime (Balanced/Stationary)	Approx. 11 hours
Battery Runtime (Fill Light Max Brightness)	Approx. 4 hours
Charging Time	2 hours (5V-2A)



Smart and Accurate

Pioneer in AI Tracking

In 2016, we introduced the world's first gimbal with AI tracking capability. After eight years of continuous research and enhancement, we remain at the forefront of this technology.

Image: Comprehensive technical specifications of the hohem iSteady x3.

WARRANTY AND SUPPORT

Your hohem iSteady x3 Gimbal Stabilizer comes with a manufacturer's warranty. Please refer to the Warranty Card included in your package for specific terms and conditions regarding coverage and duration.

For technical support, troubleshooting assistance, or warranty claims, please contact hohem customer service through their official website or the contact information provided in your Quick Start Guide.

You can also visit the official hohem store on Amazon for additional product information and support resources: [hohem Amazon Store](#)