

[Manuals.plus](#) /

> [Bopcal](#) /

> Bopcal 5-in-1 High-Speed Hot Air Styler Instruction Manual (Model ZCY892-B)

Bopcal ZCY892-B

Bopcal 5-in-1 High-Speed Hot Air Styler Instruction Manual

Model: ZCY892-B

1. INTRODUCTION

This manual provides instructions for the safe and effective use of your Bopcal 5-in-1 High-Speed Hot Air Styler. This versatile styling tool is designed for drying, straightening, curling, smoothing, and volumizing hair. Please read all instructions carefully before use and retain this manual for future reference.



Figure 1.1: Bopcal 5-in-1 High-Speed Hot Air Styler with its five interchangeable attachments.

2. SAFETY INFORMATION

To ensure safe operation, observe the following precautions:

- Always ensure the NTC temperature control system is functioning correctly to prevent overheating.
- The device is equipped with an ALCI (Appliance Leakage Current Interrupter) plug for electrical safety. Do not bypass or tamper with this safety feature.
- Use the provided heat-insulating glove when handling hot attachments.
- Do not use this appliance near water, such as in a bathtub, shower, or sink.
- Keep out of reach of children.
- Unplug the appliance when not in use.

3. PRODUCT OVERVIEW

The Bopcal 5-in-1 Hot Air Styler includes a main unit and five interchangeable attachments for various styling needs.

3.1 Components

- **Main Unit:** Features power, speed, and temperature controls.
- **Drying Nozzle:** For pre-drying hair.
- **1.25" Auto-Wrap Curling Barrels (Left & Right):** For creating curls.
- **Round Volumizing Brush:** For adding volume and shape.
- **Smoothing Brush:** For straightening and smoothing hair.

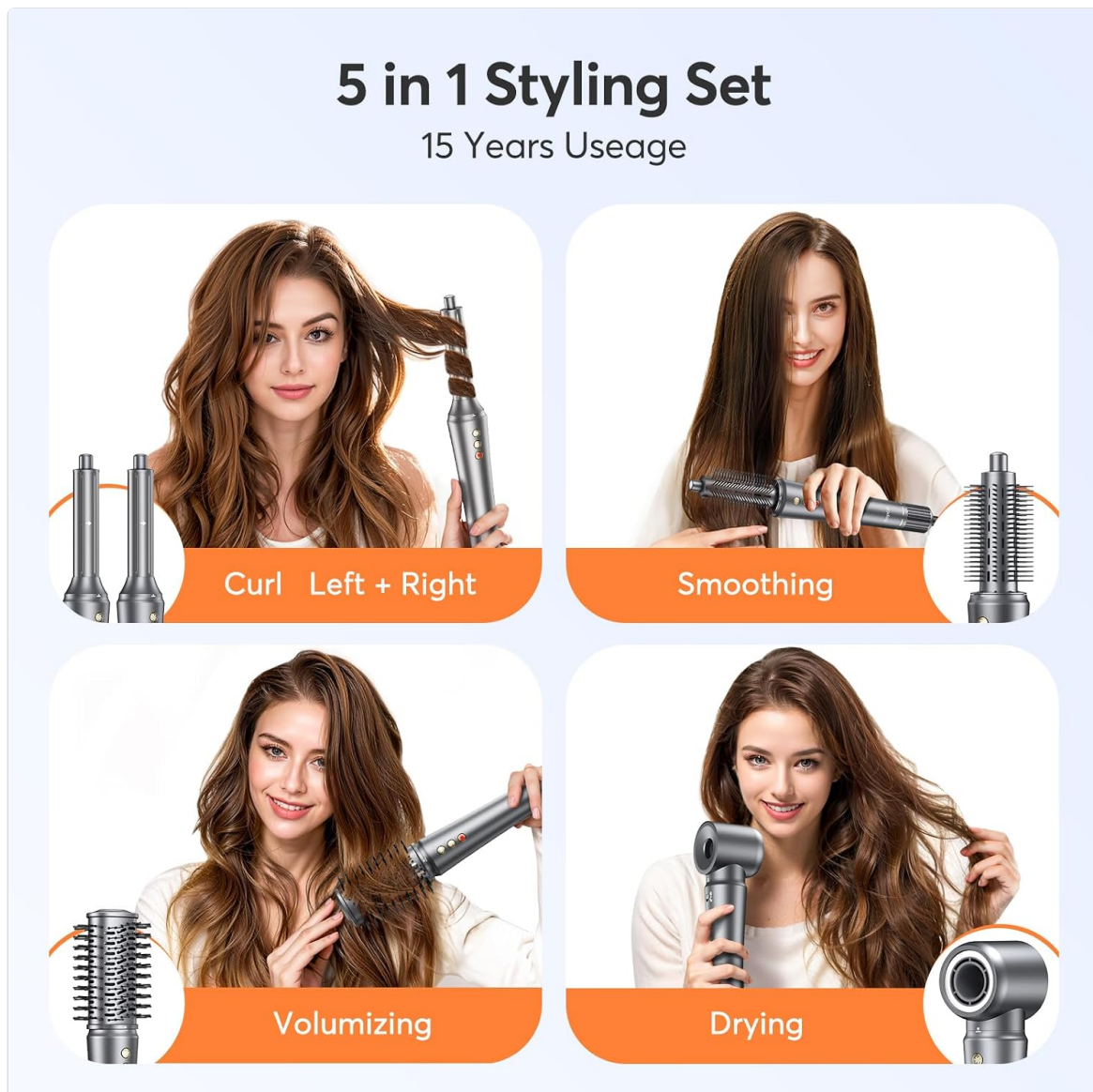


Figure 3.1: The 5-in-1 styling set demonstrating the use of each attachment.



Figure 3.2: All components of the Bopcal 5-in-1 Styler.

4. SETUP

4.1 Attaching and Removing Accessories

To attach an accessory:

1. Choose your desired styling brush or barrel.
2. Align the arrows on the attachment with the main unit, insert, and turn left to secure the brush in place.

To remove an accessory:

1. Press the "PUSH" button on the main unit.
2. Turn the attachment to the right and then remove it.

What do we have?

Meet all your needs!



Figure 4.1: Steps for attaching and removing styling accessories.

5. OPERATING INSTRUCTIONS

Ensure hair is towel-dried before styling for optimal results. The device features 300 million negative ions to reduce frizz and enhance shine.

5.1 Power and Settings




Figure 5.1: Control panel with power, speed, and temperature settings.

- **Power Switch:** Hold for 3 seconds to turn on/off.
- **2 Speed Switch:** Select Low or High airflow.
- **4 Air Temp Switch:** Choose from Cool, Warm, Hot, or Cycle (alternating hot and cool air). Indicator lights show the selected temperature.

5.2 Drying

Attach the drying nozzle to pre-dry hair until it is damp, not soaking wet. The high-speed motor provides efficient drying.



Round Brush

Wet-To-Dry Volumizing And Styling
Without Heat Damage

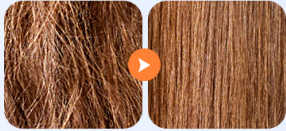
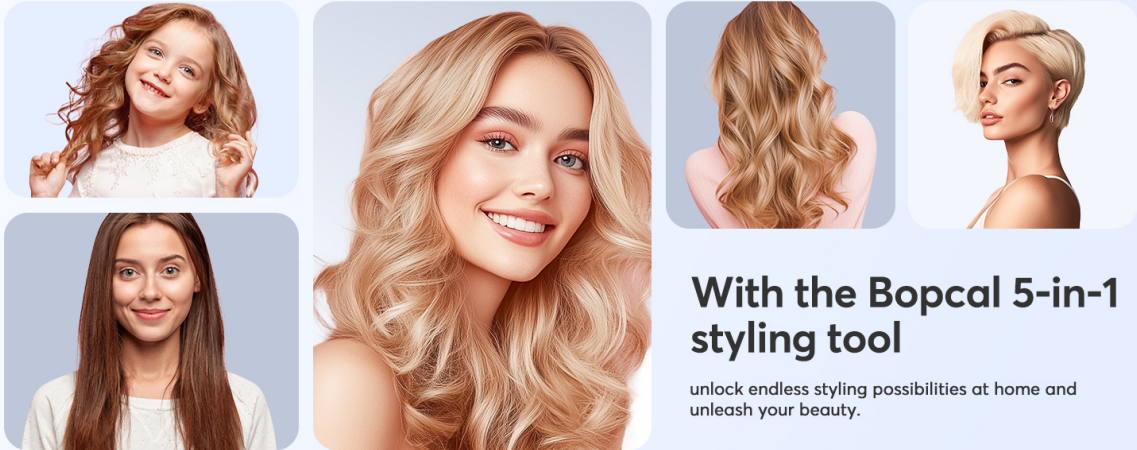


Figure 5.2: Using the drying attachment to prepare hair for styling.

5.3 Curling with Auto-Wrap Barrels

Use the 1.25" auto-wrap curling barrels on damp hair. Select the appropriate barrel for left or right-facing curls.


1. Hold the middle of a 1-2 inch section of hair, allowing the ends to dangle.
2. Bring the barrel behind the dangling ends. The ends will automatically wrap around the curling barrel.
3. Slowly bring the barrel to the roots.
4. Hold the barrel in place for 10-15 seconds.



With the Bopcal 5-in-1 styling tool

unlock endless styling possibilities at home and
unleash your beauty.

Figure 5.3: Step-by-step guide for curling hair.



High Speed Hair Dryer

Fast drying hair and prepare for styling

110000 RPM **36** M/s Strong Wind **3** X faster

Figure 5.4: The 1.25" auto-wrap curling barrels for left and right curls.

5.4 Volumizing with Round Brush

Attach the round volumizing brush to add body and shape to your hair. Use on damp hair, lifting sections from the roots.

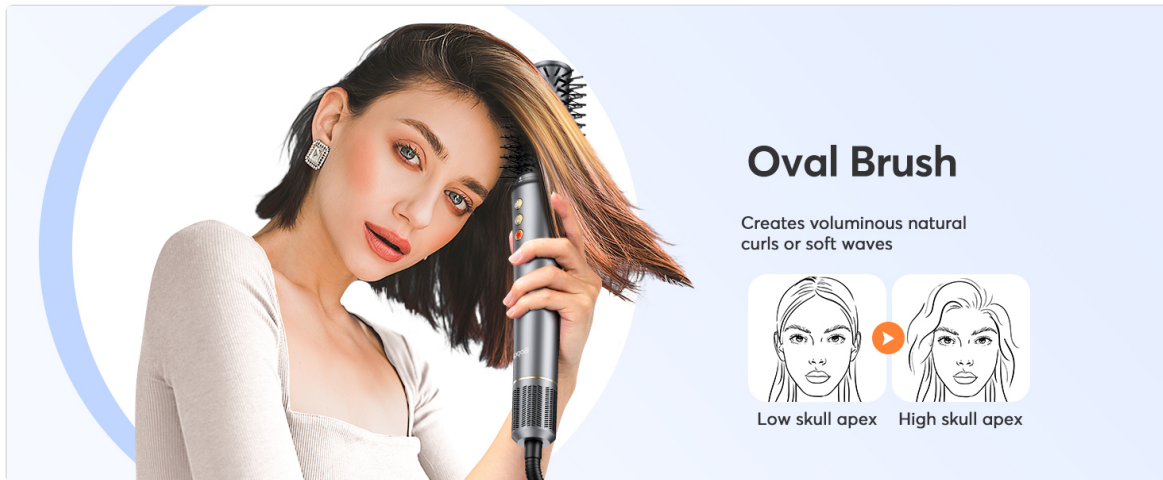


Figure 5.5: Using the round brush for wet-to-dry volumizing and styling.

5.5 Smoothing with Smoothing Brush

Attach the smoothing brush to achieve a sleek, straight look or soft waves. Brush through sections of damp hair from root to tip.

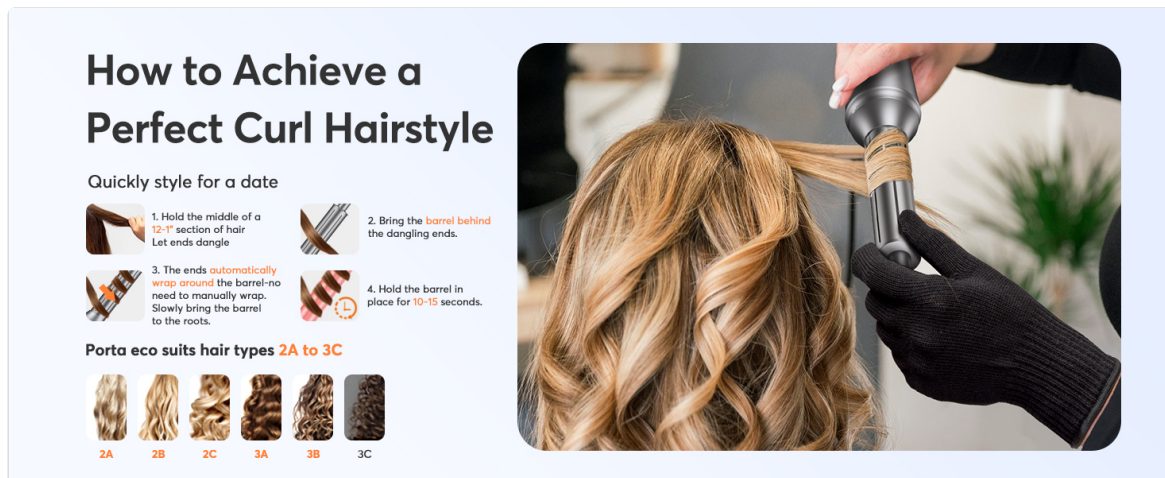


Figure 5.6: Using the oval brush to create voluminous natural curls or soft waves.

6. MAINTENANCE AND CARE

Regular cleaning and proper storage will extend the life of your Bopcal Hot Air Styler.

- Always unplug the device before cleaning.
- Allow attachments to cool completely before handling or storing.
- Wipe the main unit and attachments with a soft, damp cloth. Do not use abrasive cleaners or solvents.
- Ensure no hair or debris is blocking the air intake filter at the bottom of the main unit. Clean as needed with a small brush.

- Store the styler and its attachments in a dry, safe place.

7. TROUBLESHOOTING

If you encounter issues with your Bopcal Hot Air Styler, refer to the following common problems and solutions:

Problem	Possible Cause	Solution
Device does not turn on	Not plugged in; ALCI plug tripped; Power switch not held long enough.	Ensure plug is fully inserted. Reset ALCI plug if tripped. Hold power button for 3 seconds.
Weak airflow	Air intake filter blocked; Low speed setting selected.	Clean the air intake filter. Switch to High speed setting.
Attachments detach during use	Attachment not securely locked.	Ensure attachment is twisted fully to the left until it clicks into place.
Hair not curling/styling effectively	Hair too wet/dry; Incorrect technique; Section size too large.	Ensure hair is damp. Review operating instructions for technique. Use smaller hair sections.

If the problem persists, contact customer support.

8. SPECIFICATIONS

Feature	Detail
Model Number	ZCY892-B
Brand	Bopcal
Power Source	Corded Electric
Wattage	1200 watts
Motor Speed	110,000 RPM
Airflow Speed	36 m/s
Ionic Technology	300 Million Negative Ions
Temperature Settings	Cool, Warm, Hot, Cycle
Speed Settings	Low, High
Product Dimensions	13 x 3 x 10 inches

Feature	Detail
Item Weight	3 Pounds
Material	Plastic
UPC	768904689874

9. WARRANTY AND SUPPORT

For warranty information or technical support, please refer to the documentation included with your purchase or contact Bopcal customer service through the retailer where the product was purchased.