



[Manuals.plus](#) /

> [umosis](#) /

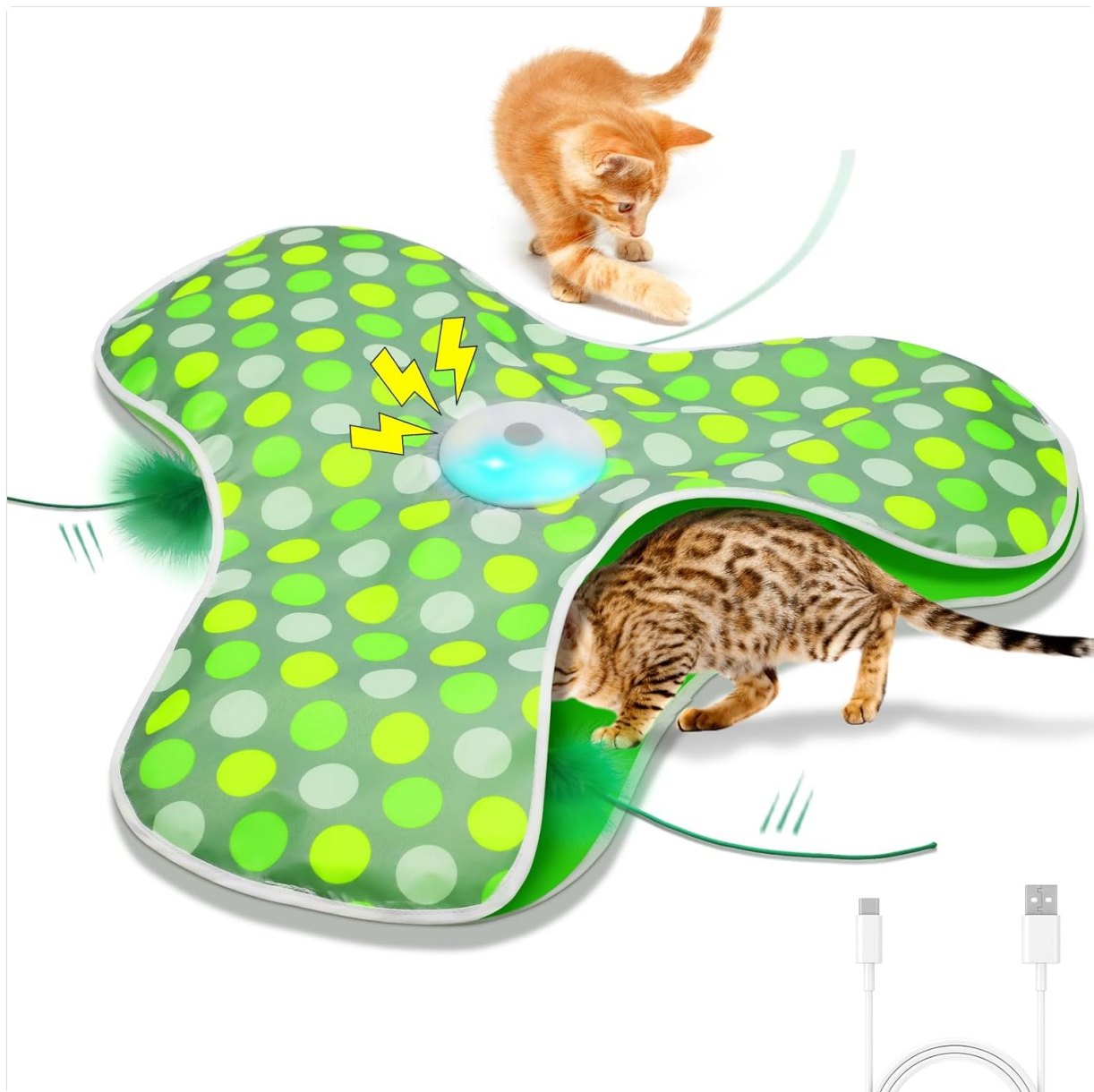
> umosis Interactive Cat Toy P43 Instruction Manual

umosis P43

umosis Interactive Cat Toy P43 Instruction Manual

INTRODUCTION

Thank you for choosing the umosis Interactive Cat Toy P43. This innovative toy is designed to engage your cat's natural hunting instincts through moving concealed feathers, lifelike mouse squeaks, and touch-activated play. This manual provides detailed instructions for setup, operation, maintenance, and troubleshooting to ensure optimal performance and enjoyment for your feline companion.



The umosis Interactive Cat Toy P43 in green, shown with two cats engaging with the moving feather wand.

PRODUCT OVERVIEW

Package Contents

- 1 x umosis Interactive Cat Toy P43
- 1 x Replacement Feather Wand
- 1 x USB Charging Cable
- 1 x Instruction Manual

Key Features

- **Automatic Play:** Concealed feather wand moves unpredictably, simulating prey.
- **Lifelike Mouse Squeaky Sound:** Attracts and engages cats, stimulating hunting instincts.
- **Smart Standby & Touch Activation:** Automatically enters standby after 5 minutes and reactivates with a light touch.
- **Three Working Modes:** Normal, Active, and Interactive speeds to suit different play styles.
- **USB Rechargeable:** Built-in 1200mAh battery for convenience and reduced waste.

SETUP INSTRUCTIONS

1. Charging the Device

1. Locate the power button on the top of the toy.
2. Gently open the silicon cover over the power button to reveal the USB charging port.
3. Connect the provided USB cable to the toy and a 5V/1A USB power adapter (not included).
4. The indicator light will show charging status. A full charge typically takes 2 hours.



Image illustrating the USB charging process, showing the charging port under the power button and battery status.

2. Installing the Feather Wand

1. Ensure the toy is powered off.
2. Hold the ring at the center of the toy to prevent sliding.
3. Insert the feather wand completely into the designated slot until you feel a click. Ensure there are no gaps between the wand and the ring.



A three-panel image illustrating the steps to use the toy: opening the cover for USB charging, installing the feather stick,

and pressing the button to turn it on.

OPERATING INSTRUCTIONS

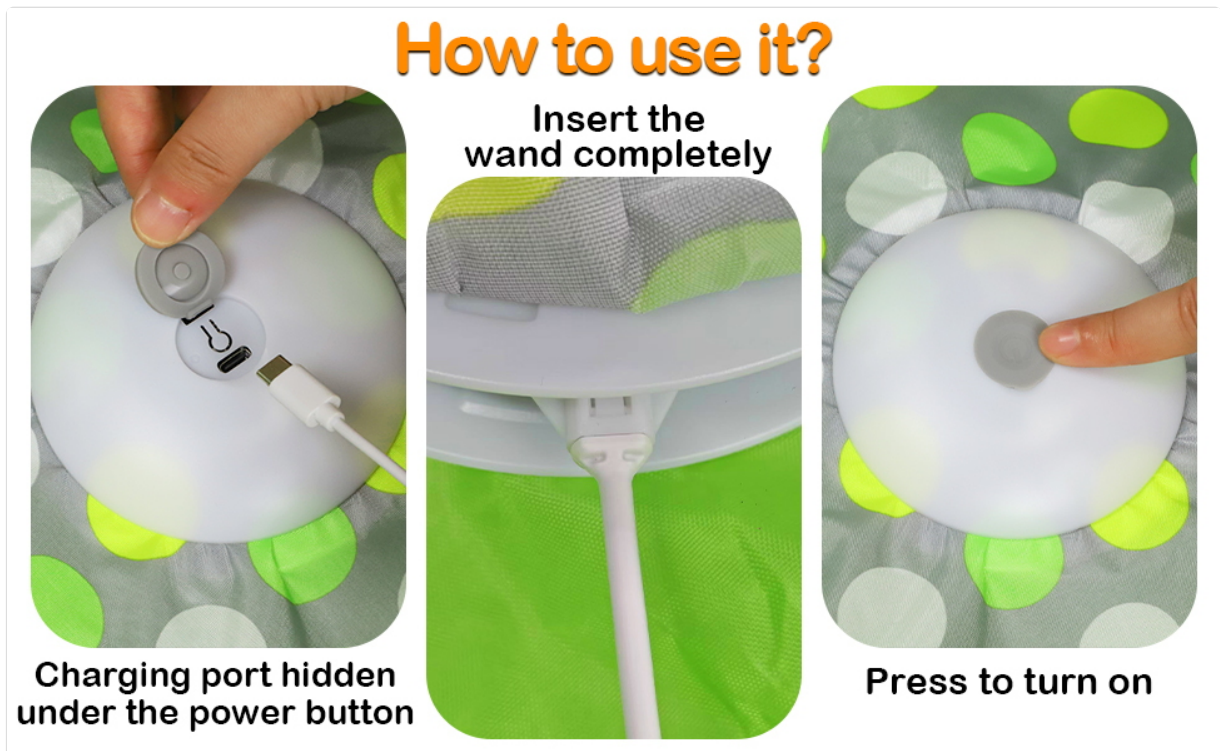
1. Powering On/Off

- To power on, press and hold the power button for a few seconds. The indicator light will illuminate.
- To power off, press and hold the power button again until the light turns off.

2. Understanding Operating Modes

The toy features three distinct operating modes, each offering a different play experience. Simply press the power button briefly to cycle through the modes:

- **Normal Speed (Blue Light):** Provides a steady, engaging movement pattern for general play.
- **Active Speed (Purple Light):** Offers faster and more erratic movements for increased stimulation.
- **Interactive Mode (Yellow Light):** Runs for 30 seconds, then enters standby, reactivating with a touch.



Visual representation of the three distinct operating modes (Normal, Active, Interactive) indicated by different colored lights (blue, purple, yellow) and their corresponding feather movements.

3. Mouse Sound Feature

The toy includes a lifelike mouse squeaky sound to further attract your cat's attention.

- To activate or deactivate the mouse sound, quickly press the power button twice.
- The indicator light will blink red when the sound is off and green when it is on.



A cat looking intently at the toy, with musical notes and mouse icons indicating the lifelike mouse squeaky sound feature.

4. Touch Activation and Standby

In Normal and Active modes, the feather wand will run for 5 minutes, then the toy will enter a smart standby mode. During standby, your cat can reactivate the toy with a light touch, promoting independent play and conserving battery life.



Image showing how the toy enters standby mode after 5 minutes and can be reactivated by a light touch, highlighting the internal chip.

MAINTENANCE

Cleaning

To ensure smooth operation, periodically check the motor area for any accumulated hair or fur. If the wand moves slowly or stops, it may indicate a blockage. Gently clean the motor area to remove any obstructions.

Feather Wand Replacement

Feather wands are consumable items and may require replacement over time due to wear and tear. For additional accessories or replacement wands, please contact umosis customer support.

TROUBLESHOOTING

Issue	Possible Cause / Solution
Wand moves slowly or stops moving.	The motor may be stuck due to hair or fur. Power off the toy, then carefully check and clean the motor area.
Missing package contents.	Please check all packaging materials thoroughly. If items are still missing, contact umosis customer support for assistance.
Toy does not turn on or hold a charge.	Ensure the toy is fully charged using a 5V/1A adapter. Check the USB cable for damage. If issues persist, contact customer support.

PRODUCT SPECIFICATIONS

Specification	Detail
Model Name	P43
Brand	umosis
Item Weight	10.8 ounces
Item Dimensions (LxWxH)	5 x 2.5 x 5 inches
Battery	1 Lithium Polymer battery (included), 1200mAh
Material	Acrylonitrile Butadiene Styrene, Cotton
Color	Green
Manufacturer	LEPLE

WARRANTY AND SUPPORT

The umosis Interactive Cat Toy P43 comes with a one-year warranty from the date of purchase. This warranty covers manufacturing defects and ensures the product functions as intended under normal use.

For any questions, concerns, or warranty claims, please contact umosis customer support directly. Please have your purchase information and model number (P43) ready when contacting support.

Contact information for umosis can typically be found on the product packaging or through the retailer

where the product was purchased.