

LY-1668

Smart Automatic Curtain Opener User Manual

Model: LY-1668 | Brand: Generic

1. INTRODUCTION AND OVERVIEW

Thank you for choosing the Smart Automatic Curtain Opener. This device is designed to bring convenience and intelligence to your home by automating your curtains. It offers versatile control options, including app and WiFi control, and is compatible with popular voice assistants like Amazon Alexa, Google Assistant, and Siri. Its robust motor and quiet operation ensure a seamless experience.



Image: Two Smart Automatic Curtain Openers, showcasing their compact design.



Image: The Smart Automatic Curtain Opener installed on a curtain track, with a hand holding a smartphone displaying the control application, demonstrating its integration into a smart home environment.

This manual provides detailed instructions for setting up, operating, and maintaining your new curtain opener. Please read it carefully before use.

2. PACKAGE CONTENTS

Ensure all items listed below are present in your package:

- Two Smart Curtain Motors
- One Type-C Charging Cable
- One Wireless Gateway
- Two sets of T-shaped fittings (4 pieces)
- Two sets of U-shaped fittings (4 pieces)
- Six sets of U-shaped fitting rollers (12 pieces)
- Two sets of Roman rod fittings (4 pieces)
- One Telescopic Rod Patch Accessory
- Two sets of Fabric Curtain Clip Supports (8 pieces)
- One Screwdriver
- Two Roman Rod Traction Ropes (each 3 meters long)
- Eight Small Screws



Image: A visual representation of the comprehensive accessory package, showing all included components for installation and use.

3. SETUP AND INSTALLATION

The Smart Automatic Curtain Opener is designed for easy installation. Follow these steps to set up your device:

3.1. Track Compatibility

The curtain opener is compatible with three main types of curtain tracks:

- **Roman Rod Track:** Compatible with sizes 16-38 mm.
- **T-shaped Track:** Compatible with sizes 7-26 mm.
- **U-shaped Track:** Compatible with sizes 4-10 mm.

Use the appropriate track fittings provided in the package for your specific curtain system.



Image: A visual guide illustrating the compatibility of the curtain opener with Roman rod, T-shaped, and U-shaped curtain tracks, along with their respective compatible sizes.

3.2. Installation Steps

1. **Attach Accessories:** Select the correct fittings and rollers for your curtain track type. Attach them securely to the side cover of the smart curtain motor.
2. **Hang on the Rod/Track:** Carefully hang the assembled curtain motor onto your curtain rod or track. Ensure it is securely clipped.
3. **Secure the Main Unit:** Once positioned, ensure the main unit is firmly secured.
4. **Initial Pairing:** Follow the instructions in the Tuya APP to complete the initial pairing process with your smartphone.
5. **Connect to Voice Assistant (Optional):** If desired, configure the wireless gateway to connect to Amazon Alexa, Google Assistant, or Siri for voice control.

The installation process is typically quick, taking approximately 15 minutes.

4. OPERATING INSTRUCTIONS

The Smart Automatic Curtain Opener offers multiple convenient ways to control your curtains:

4.1. App Control (Tuya APP)

The Tuya APP provides comprehensive control over your curtain opener:

- **Open/Close Curtains:** Manually open or close your curtains with a tap.
- **Set Schedules:** Program specific times for your curtains to open or close automatically.
- **Silent Mode:** Activate silent mode for quieter operation, especially useful during sleep.
- **Temperature and Light Sensors:** Utilize built-in sensors to intelligently determine when to close curtains based on environmental conditions.

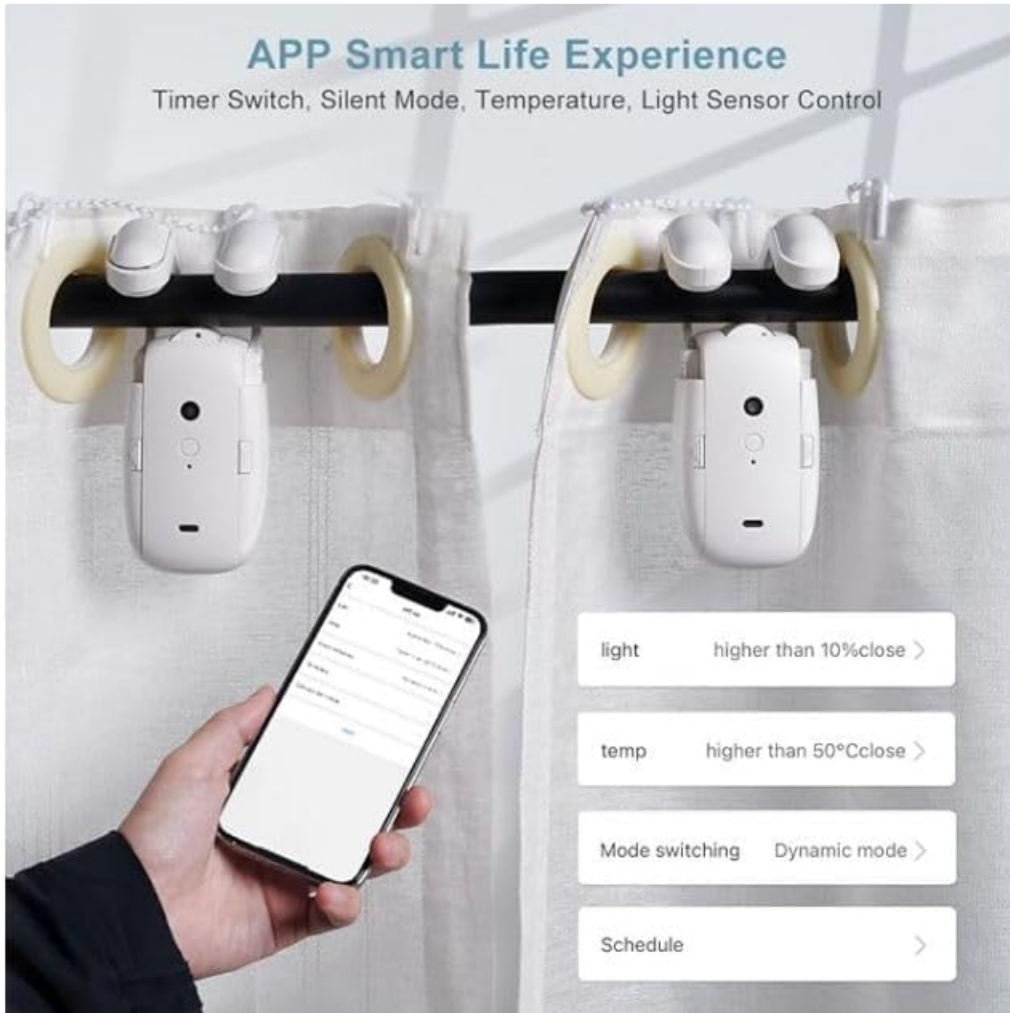


Image: A smartphone displaying the Tuya APP interface, highlighting options for timer switch, silent mode, and control via temperature and light sensors.

4.2. Voice Control

By setting up the wireless gateway, you can control your curtains using voice commands through:

- Amazon Alexa
- Google Assistant
- Siri

Simply use commands like "Alexa, open the curtains" or "Hey Google, close the curtains" for instant response.

Intelligent 3-in-1 Control

Remote, WiFi, Tuya APP

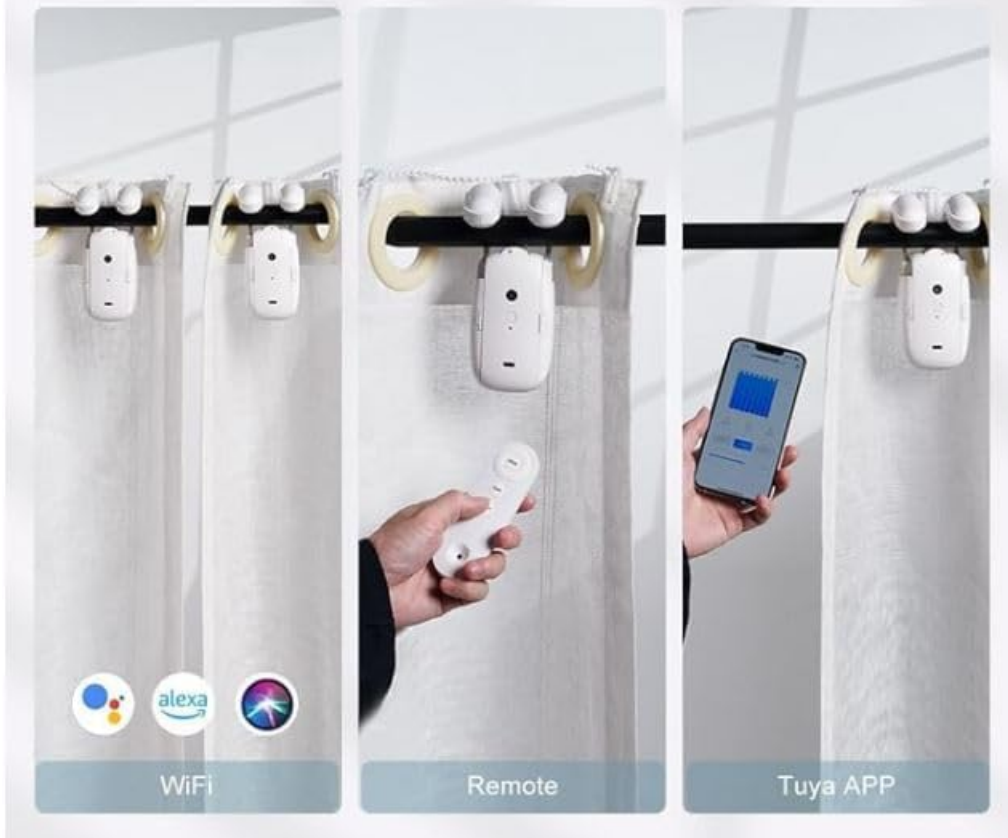


Image: Three panels illustrating the intelligent 3-in-1 control options: WiFi integration with Alexa, remote control (remote not included in this package), and control via the Tuya APP.

5. KEY FEATURES

- **Powerful Performance:** Equipped with a robust motor, the device supports a maximum thrust of 12 kg (26.4 lbs), suitable for various curtain weights.
- **Whisper-Quiet Operation:** Designed for low noise, operating at less than 25 dB in silent mode. The movement speed is approximately 0.1 m/s (3.93 inches/s), ensuring smooth and quiet curtain movement.
- **Extended Battery Life:** Features a built-in 4000 mAh lithium battery, rechargeable via a Type-C charging port. A full charge takes 5-6 hours and can last up to six months depending on usage.



Image: Two Smart Automatic Curtain Openers, emphasizing their ultra-long battery life with details on the 4000mAh lithium battery, 6 months usage time, 5-6 hours charging duration, and Type-C charging port.

6. MAINTENANCE

To ensure optimal performance and longevity of your Smart Automatic Curtain Opener, follow these simple maintenance guidelines:

- **Charging:** Recharge the built-in 4000 mAh lithium battery using the provided Type-C cable when the battery indicator is low. A full charge typically takes 5-6 hours.
- **Cleaning:** Periodically wipe the exterior of the device with a soft, dry cloth to remove dust and debris. Do not use abrasive cleaners or immerse the device in water.
- **Track Inspection:** Occasionally check your curtain track for any obstructions or damage that might impede the smooth movement of the opener.
- **Firmware Updates:** Check the Tuya APP regularly for any available firmware updates to ensure your device has the latest features and performance improvements.

7. TROUBLESHOOTING

If you encounter any issues with your Smart Automatic Curtain Opener, please refer to the following common troubleshooting tips:

- **Device Not Responding:**

- Ensure the device is fully charged. Connect it to the Type-C charging cable and allow it to charge for 5-6 hours.
- Check if the device is properly installed on the curtain track and securely clipped.
- Verify that the device is connected to your WiFi network and the Tuya APP.

- **Pairing Issues:**

- Ensure your smartphone's Bluetooth is enabled during the initial pairing process.
- Restart the Tuya APP and try the pairing process again.
- If using a gateway for voice control, ensure the gateway is properly set up and connected to your home network.

- **Motor Running Continuously or Slipping:**

- This may indicate an issue with calibration. Refer to the Tuya APP for instructions on recalibrating the curtain travel limits.
- Ensure the correct track fittings and rollers are used and are not worn out.
- Check for any physical obstructions on the curtain track.

- **Voice Control Not Working:**

- Confirm that your wireless gateway is online and properly linked to your voice assistant (Alexa, Google Assistant, Siri) account.
- Check your internet connection.
- Ensure the voice commands are clear and correctly phrased.

If the problem persists after trying these steps, please contact customer support for further assistance.

8. SPECIFICATIONS

Feature	Detail
Brand	Generic
Model Number	LY-1668
Color	White
Product Dimensions	2.4"L x 2.6"W
Item Weight	2.65 Pounds
Number of Pieces	2 (Curtain Motors)
Manufacturer	Sintel

Battery Type	4000mAh Lithium Ion (Included)
Charging Time	5-6 hours
Usage Time (per charge)	Up to 6 months (depending on usage)
Max Thrust	12 kg (26.4 lbs)
Noise Level (Silent Mode)	Less than 25 dB
Operating Speed	0.1 m/s (3.93 inches/s)
Track Compatibility	Roman Rod (16-38mm), T-shaped (7-26mm), U-shaped (4-10mm)

9. WARRANTY AND SUPPORT

Specific warranty information for this product is not provided in the available data. For warranty details, technical support, or any inquiries regarding your Smart Automatic Curtain Opener, please refer to the contact information provided on the product packaging or the manufacturer's official website.