

TEZLUCAZ DDS663

TEZLUCAZ DDS663 Single Phase LCD Digital Energy Meter Instruction Manual

1. INTRODUCTION

This manual provides detailed instructions for the installation, operation, and maintenance of the TEZLUCAZ Single Phase LCD Digital Energy Meter series, including models DDS663, DDS662, DDS662-L, DDS667, and DDS668. Please read this manual thoroughly before installation and use to ensure proper function and safety.

2. PRODUCT OVERVIEW AND FEATURES

The TEZLUCAZ Digital Energy Meter is designed for measuring single-phase active energy consumption. It features an LCD display for clear readings of various electrical parameters. Different models offer specific functionalities as detailed below.



Figure 1: Example of a TEZLUCAZ Digital Energy Meter (DDS668 model shown) displaying energy consumption.

Model Specific Features:

- **DDS663, DDS662, DDS662-L:** These models typically do not include a button or reset function for temporary kWh. The total kWh cannot be reset.
- **DDS667, DDS668:** These models feature a button with a reset function. The temporary kWh can be reset by holding the button for 6 seconds. The total kWh cannot be reset.
- **DDS668:** This model is designed to always display two values simultaneously, with one inevitably displaying power.
- **DDS662, DDS662-L:** Available in AC220V 50Hz/60Hz and AC110V 50Hz/60Hz versions.
- **DDS663, DDS667, DDS668:** Available in AC220V/50Hz and AC110V/60Hz versions.

DDS663 AC110V 60Hz AC220V 50Hz Without Backlight

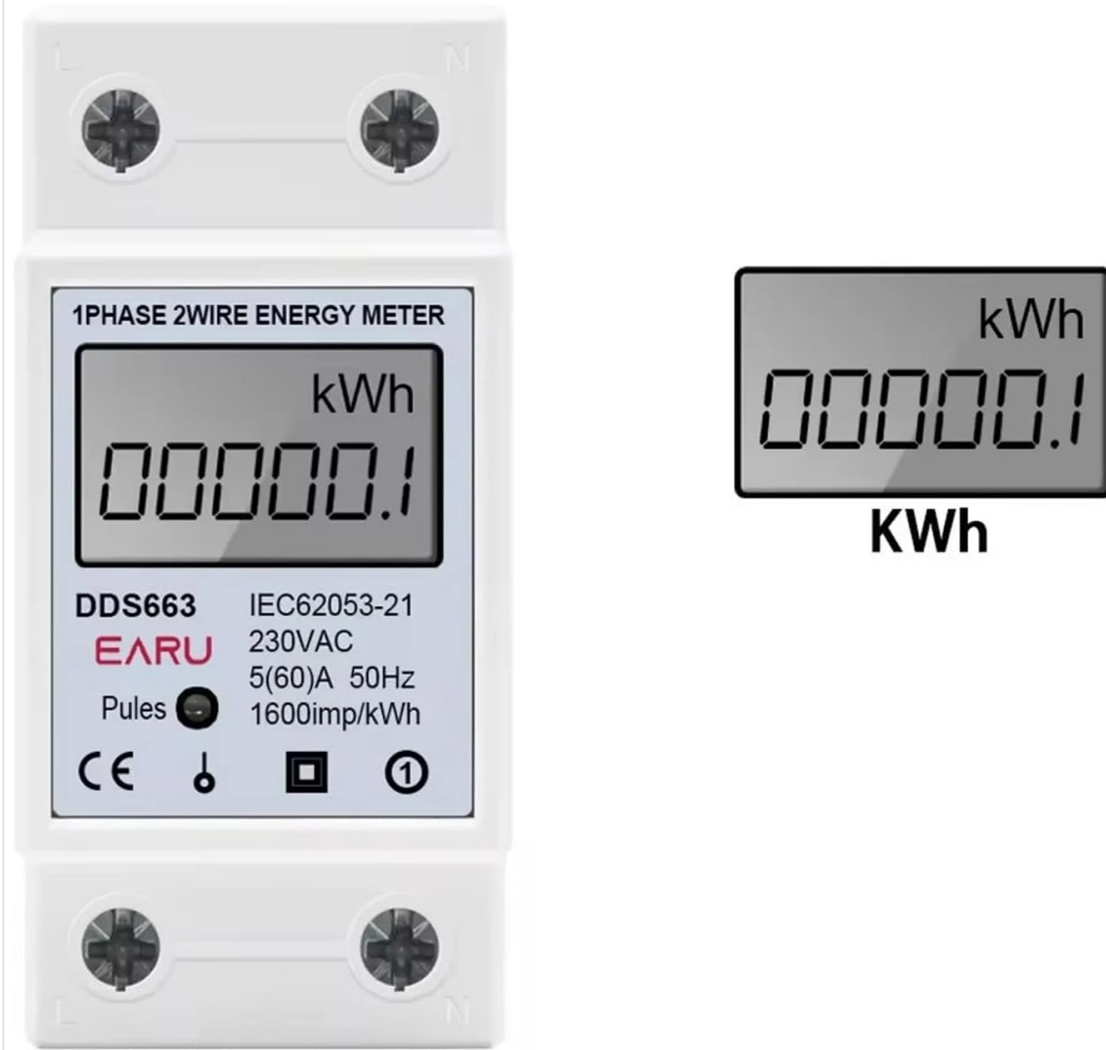


Figure 2: TEZLUCAZ DDS663 Digital Energy Meter, which operates without a backlight.

Common Features:

- Pulse LED indicates meter operation.
- 35mm DIN rail installation.
- Multifunctional display: total Energy kWh, temporary Energy kWh, real Voltage, real Current, real Power (by manual pressing on models with buttons).



DDS663 DDS662 DDS662-L DDS667 DDS668

LCD Display	✓	✓	✓	✓	✓
Electricity Consumption	✓	✓	✓	✓	✓
Voltage		✓	✓	✓	✓
Power		✓	✓	✓	✓
Current		✓	✓	✓	✓
With Backlight			✓	✓	✓
Temporary Power				✓	✓
Manual Switching				✓	✓
Zeroable				✓	✓
Frequency					✓
Power Factor					✓

Figure 3: Feature comparison table for TEZLUCAZ Digital Energy Meter models.

3. SPECIFICATIONS

Parameter	Value
Maximum Current	60A / 80A (model dependent)
Pulse Frequency	1000imp / kWh or 1600imp / kWh
Dimensions	78 x 65 x 35 mm
Operating Temperature	-10 to 50°C
Output Voltage	230V AC
Measuring Energy Range	0 - 99999.9 kWh
Phase	Single Phase
Max Operating Current	50A - 79A

Parameter	Value
Rated Voltage	230V AC (or 110V AC depending on model)
Power Supply	AC
Display Type	LCD
DIY Supplies Category	ELECTRICAL

4. SAFETY INFORMATION

Always observe the following safety precautions:

- Installation and maintenance should only be performed by qualified personnel.
- Ensure power is disconnected before performing any wiring or installation.
- Do not operate the meter if it appears damaged.
- Adhere to all local electrical codes and regulations.
- The meter is designed for indoor use in a dry environment.

5. INSTALLATION (SETUP)

The TEZLUCAZ Digital Energy Meter is designed for 35mm DIN rail installation.

5.1 Mounting

1. Ensure the DIN rail is securely mounted within an electrical enclosure.
2. Align the meter's DIN rail clip with the rail.
3. Press the meter firmly onto the DIN rail until it clicks into place.

5.2 Wiring

The meter supports two wiring methods: top input and bottom output, or top output and bottom input. Ensure correct polarity and secure connections.

- **Input Terminals:** Connect the live and neutral wires from the power source to the designated input terminals (typically at the top).
- **Output Terminals:** Connect the live and neutral wires to the load from the designated output terminals (typically at the bottom).
- Verify all connections are tight and correct before restoring power.

6. OPERATION

Once installed and powered, the meter will automatically begin measuring energy consumption.

6.1 Display Modes

The LCD display cycles through various parameters or can be manually switched on models equipped with a button:

- **Total Energy (kWh):** Displays the cumulative energy consumption. This value cannot be reset.
- **Temporary Energy (kWh):** Displays energy consumption for a specific period. This value can be reset on models DDS667 and DDS668.
- **Real Voltage (V):** Shows the instantaneous voltage.
- **Real Current (A):** Shows the instantaneous current.
- **Real Power (W):** Shows the instantaneous power consumption.

6.2 Resetting Temporary kWh (DDS667, DDS668 only)

For models DDS667 and DDS668, the temporary kWh reading can be reset to zero:

1. Ensure the display is showing the temporary kWh value.
2. Press and hold the button on the meter for approximately 6 seconds.
3. The temporary kWh value will reset to 0.00.

Note: The total kWh reading cannot be reset on any model.

7. MAINTENANCE

The TEZLUCAZ Digital Energy Meter requires minimal maintenance.

- Keep the meter clean and free from dust. Use a soft, dry cloth for cleaning.
- Do not use abrasive cleaners or solvents.
- Regularly inspect wiring connections for tightness and signs of wear.
- Ensure the operating environment remains within the specified temperature and humidity ranges.

8. TROUBLESHOOTING

Problem	Possible Cause	Solution
Meter display is blank	No power supply or incorrect wiring.	Check power connections and ensure correct wiring according to the diagram. Verify power source is active.
Incorrect readings	Improper wiring or faulty unit.	Re-check wiring. If problem persists, contact customer support.
Temporary kWh not resetting	Model does not support reset function (DDS663, DDS662, DDS662-L) or button not held long enough.	Confirm your model supports the reset function. For DDS667/DDS668, hold the button for 6 seconds.
Pulse LED not flashing	No load connected or meter malfunction.	Ensure a load is connected and drawing power. If LED still doesn't flash, contact support.

9. WARRANTY AND SUPPORT

For warranty information or technical support, please contact TEZLUCAZ customer service through your purchase platform or the official TEZLUCAZ website. Please have your product model number and purchase

details available when contacting support.