

Pravoluxmax SH20.006BB-CD

Pravoluxmax Retractable Baby Gate Dog Gate Instruction Manual

Model: SH20.006BB-CD

1. SAFETY INFORMATION

This retractable safety gate is designed to provide a secure barrier for babies and pets. Please read and follow all instructions carefully to ensure safe installation and operation. Failure to do so could result in serious injury or property damage.

- **Intended Use:** This gate is suitable for use with children from infancy through toddlerhood and for containing pets.
- **Installation:** For enhanced safety and stability, drilling is required for installation. Do not attempt to install without proper tools or on unsuitable surfaces.
- **Supervision:** Never leave children or pets unattended near the gate. This gate is a deterrent, not a substitute for adult supervision.
- **Gate Integrity:** Regularly inspect the gate for any signs of damage, wear, or loose components. Discontinue use if any part is compromised.
- **Climbing Hazard:** Ensure children and pets cannot climb over the gate. The 37-inch height is designed to reduce this risk.
- **Material Safety:** The mesh is made from skin-friendly, soft, breathable, and risk-free polyester and PVC materials. It is also waterproof and flame-resistant.

2. PRODUCT OVERVIEW

The Pravoluxmax Retractable Baby Gate is an extra-wide safety solution designed for various openings, both indoors and outdoors. Its retractable design allows for convenient use and space-saving storage when not needed.

Key Features:

- **Dimensions:** 37 inches (94 cm) tall, expandable up to 200 inches (508 cm) wide.

- **Dual Lock System:** Features separate mesh and gate locks for convenient operation.
- **Durable Mesh:** Constructed from high-strength polyester and PVC, offering scratch-resistance, breathability, waterproofing, and flame resistance.
- **Fiberglass Reinforcement:** Integrated fiberglass support strips prevent mesh sagging and ensure smooth retraction.
- **Movable Brackets:** Adaptable to different baseboard heights for easier installation.
- **Versatile Use:** Suitable for doorways, stairs, hallways, and outdoor areas like patios, decks, and yards.
- **Floor Anchors:** Optional floor anchors prevent small children and pets from crawling under the gate.

Components:

- Retractable Gate Unit (Main housing with mesh)
- Receiving Brackets (for the mesh to latch onto)
- Wall Mounts/Brackets
- Expansion Screws and Wall Anchors
- Fiberglass Support Rods
- Floor Anchors (optional, for preventing crawling under)

3. INSTALLATION

This gate requires drilling for secure installation. Ensure you have the necessary tools (drill, screwdriver, measuring tape, pencil) before beginning.

Supported Installation Surfaces:

- Wood Wall
- Brick Wall
- Concrete Wall

Note: Installation on drywall is not recommended without additional structural support.

Installation Steps:

1. **Positioning:** Determine the desired location for your gate. The upgraded design with movable brackets allows adaptation to various baseboard heights.
2. **Marking:** Insert the bracket into the gate unit, remove the adhesive paper (if present for temporary positioning), and temporarily stick the gate unit to the wall. Use a pencil to mark the drilling holes through the bracket. Repeat this process for the receiving brackets on the opposite side.
3. **Drilling:** Drill holes at the marked locations. The size of the drill bit will depend on the type of wall and the provided expansion screws.
4. **Securing Brackets:** Insert wall anchors into the drilled holes (if required for your wall type) and secure the wall mounts/brackets using the provided expansion screws. Ensure they are firmly attached.
5. **Installing Gate Unit:** Slide the main retractable gate unit onto its secured wall mounts.
6. **Installing Receiving Brackets:** Attach the receiving brackets to the opposite wall, ensuring they align correctly with the gate's latching mechanism when extended.
7. **Optional Floor Anchors:** If desired, install the floor anchors beneath the mesh path to prevent crawling under. Mark and drill small holes, then secure the anchors.

Modular Design: The gate features a modular installation design, allowing for easy disassembly if the gate needs to be temporarily removed or relocated.



Image: Step-by-step guide for installing the retractable gate, illustrating marking, drilling, and securing brackets.

Say Goodbye to Breakage and Ensure Your Baby's Safety



Image: Detail of the modular installation design, highlighting the ease of attaching and detaching the gate from its wall mounts.

4. OPERATING INSTRUCTIONS

The Pravoluxmax Retractable Gate features a user-friendly dual lock system for secure and convenient operation.

Opening the Gate:

1. **Unlock Gate Latch:** Locate the concealed gate lock on the receiving side. Operate this lock to release the mesh from the receiving brackets. This allows you to open the gate without first unlocking the mesh retraction mechanism.
2. **Retract Mesh:** If you wish to fully retract the mesh, locate the mesh lock on the main gate unit. Rotate or slide it to the 'unlocked' position. Gently guide the mesh back into the housing.

Closing and Locking the Gate:

1. **Extend Mesh:** Pull the mesh from the main gate unit across the opening until it reaches the receiving brackets.
2. **Engage Gate Latch:** Secure the mesh into the receiving brackets using the concealed gate lock. Ensure it clicks firmly into place.
3. **Engage Mesh Lock:** For added security and to prevent accidental retraction, rotate or slide the mesh lock on the main gate unit to the 'locked' position.

Checking Lock Status:

The mesh lock features a geometric misalignment design. When the lock is engaged, the indicator will show a clear misalignment, confirming it is locked. When unlocked, the indicator will show alignment.

New Lock Design Makes Security Clear
Check the lock in one second



OURS

Alignment **LOCK**

Misalignment **UNLOCK**



OTHERS
Counterclockwise? Lock?
Clockwise? Unlock?

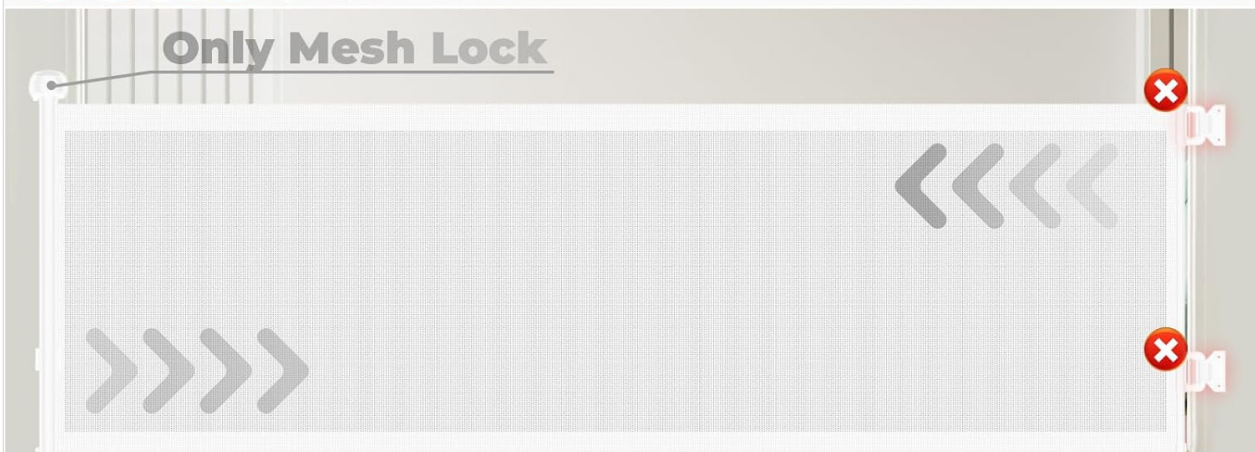
Hard to Recognize

Image: Visual guide to the lock's geometric misalignment design, indicating whether the gate is locked or unlocked.

Time-saving Design for Busy Moms



OURS : Unlock at the door for easy access, saving time and effort



OTHERS : Unlock the mesh lock, open the door, then relock the mesh

Image: Illustration of the dual lock system, showing the mesh lock and concealed gate lock for independent operation.

Retraction Speed:

When retracting the mesh, guide it back at a controlled, slower pace to ensure smooth operation and prevent the mesh from bunching or wrinkling.

5. MAINTENANCE

Regular maintenance will help prolong the life and functionality of your Pravoluxmax Retractable Gate.

- **Cleaning:** Wipe the mesh and plastic components with a damp cloth and mild soap. Avoid abrasive cleaners or harsh chemicals that could damage the material.
- **Inspection:** Periodically check all mounting hardware, screws, and locks to ensure they are secure and functioning correctly. Tighten any loose screws.
- **Mesh Condition:** Inspect the mesh for any tears, fraying, or damage. While the mesh is designed to be durable and scratch-resistant, severe impacts can cause damage.
- **Smooth Operation:** Ensure the fiberglass support rods are properly positioned within the mesh to maintain tension and prevent sagging, which aids in smooth retraction.

Modular Installation Design for Easy Disassembly



Image: Internal view of the gate's spring mechanism, highlighting its durability for over 100,000 cycles.

37" Oversized Design for Safety



Image: Features of the gate's mesh material, including breathability, wear-resistance, waterproofing, high tensile strength, and flame-resistance.

6. TROUBLESHOOTING

If you encounter issues with your gate, refer to the following common solutions:

- **Mesh Sagging or Wrinkling:** Ensure the fiberglass support rods are correctly inserted and positioned within the mesh. These rods are designed to prevent sagging and ensure smooth retraction.
- **Gate Not Locking Securely:** Verify that both the concealed gate lock and the mesh lock are fully engaged. Check the geometric misalignment indicator on the mesh lock to confirm its status.
- **Difficulty Retracting/Extending Mesh:** Ensure the mesh lock is in the 'unlocked' position. Check for any obstructions in the path of the mesh or within the retraction mechanism. Guide the mesh slowly during operation.
- **Pets Crawling Under the Gate:** Install the optional floor anchors to secure the bottom edge of the mesh closer to the floor, preventing pets from slipping underneath.

Fiberglass Rod for Superior Performance



OURS

OTHERS



Image: Visual comparison demonstrating how fiberglass rods prevent mesh sagging for improved functionality.

Floor Anchors

Prevents Kids and Pets from Crawling Through Gaps

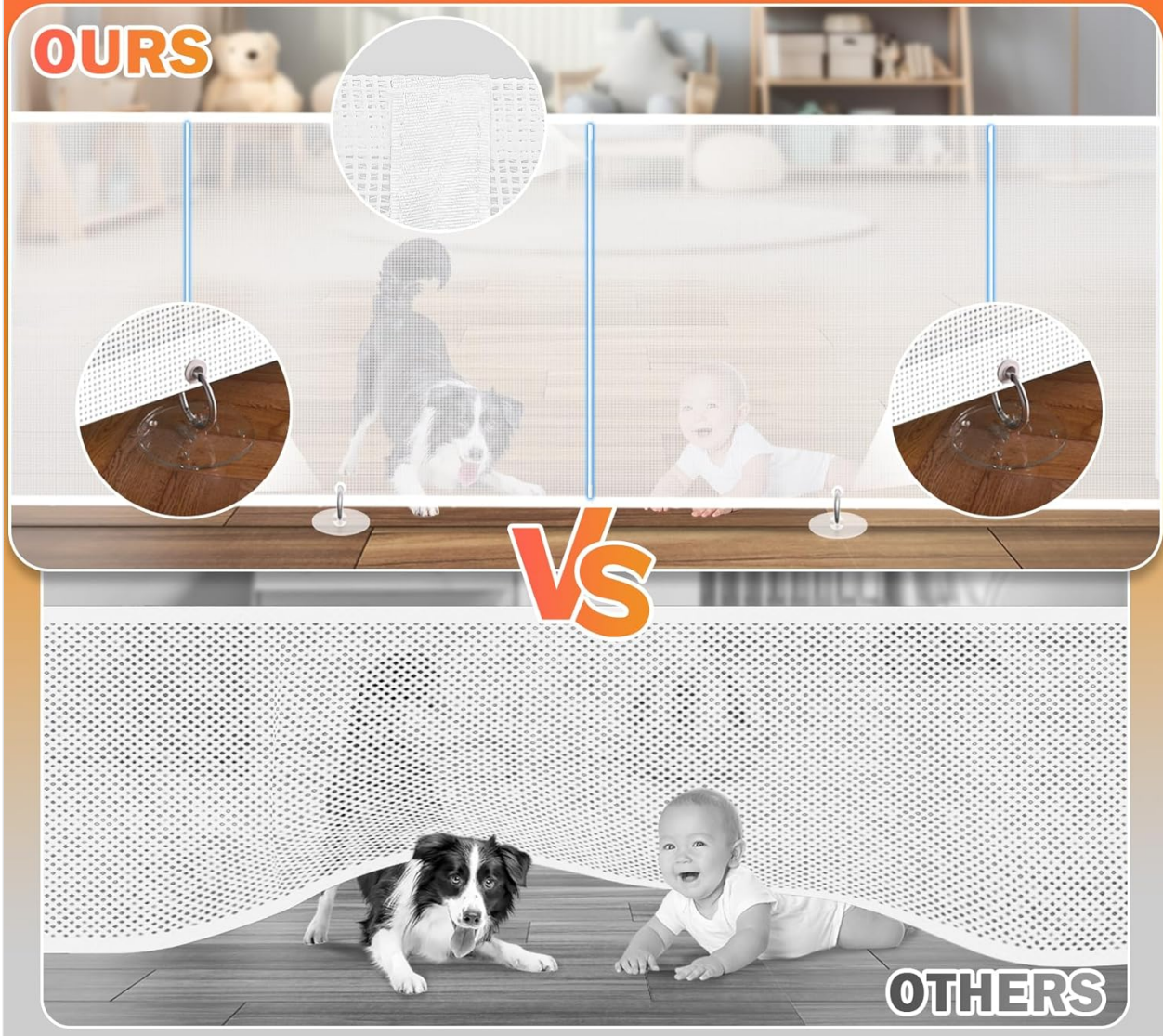


Image: Illustration of floor anchors preventing children and pets from crawling under the gate.

7. SPECIFICATIONS

Attribute	Detail
Brand	Pravoluxmax
Model Number	SH20.006BB-CD
Product Dimensions (Extended)	200 inches (Width) x 37 inches (Height)
Item Weight	9.73 pounds
Material	Metal, Plastic, Polyester, Polyvinyl Chloride (PVC)
Color	White
Mounting Type	Wall Mount (Drilling Required)
Age Range (Description)	Baby, Kid

EASY TO INSTALL

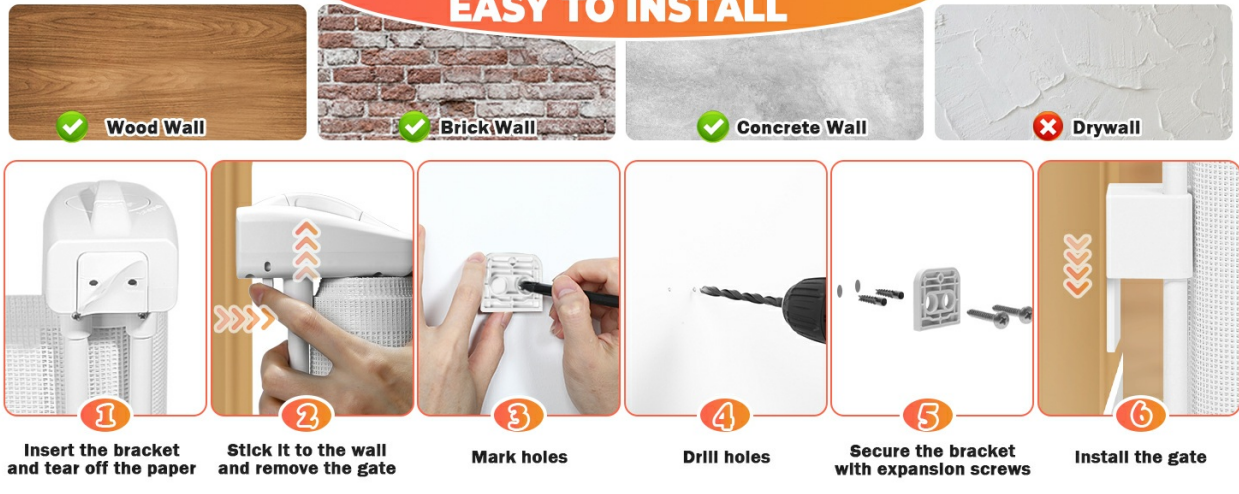


Image: Detailed dimensions of the gate, showing height and maximum width.

8. WARRANTY AND SUPPORT

Pravaluxmax is committed to providing high-quality products. This product comes with a **10-Year Replacement Warranty**.

For any questions, concerns, or support needs regarding your Pravaluxmax Retractable Baby Gate, please contact the manufacturer directly through your purchase platform or the official Pravaluxmax website.

Protecting Baby's Healthy Growth



OTHERS



Bump



Rust



Trip



Stuck

Image: Product features emphasizing baby safety and the 10-year replacement warranty.