

Kingone Wireless Charging Pencil (2nd Generation)

KINGONE Wireless Charging Pencil (2nd Generation) Instruction Manual

Model: Wireless Charging Pencil (2nd Generation)

Brand: Kingone

1. PRODUCT OVERVIEW

The KINGONE Wireless Charging Pencil (2nd Generation) is an advanced stylus designed for select iPad models, offering a seamless and intuitive writing and drawing experience. It features magnetic wireless charging, high precision, palm rejection, and tilt sensing capabilities, enhancing productivity and creativity.



Image: The KINGONE Wireless Charging Pencil magnetically attached to an iPad, displaying battery status for both devices. Three replacement nibs are shown in the top left corner.

2. COMPATIBLE MODELS

This KINGONE Wireless Charging Pencil is compatible only with specific iPad models. Please verify your iPad model number before use to ensure compatibility. The model number is typically found on the back of your iPad.

- **iPad Pro 12.9-inch:** 3rd, 4th, 5th, and 6th Generation (Models: A1876, A2014, A1895, A1983, A2229, A2069, A2232, A2233, A2378, A2461, A2379, A2462, A2764, A2437, A2766, A2436)
- **iPad Pro 11-inch:** 1st, 2nd, 3rd, and 4th Generation (Models: A1980, A2013, A1934, A1979, A2228, A2068, A2230, A2231, A2316, A2324, A2325, A2072, A2588, A2589, A2591, A2759, A2435, A2761, A2762)
- **iPad Air:** 4th and 5th Generation (Models: A2316, A2324, A2325, A2072, A2588, A2589, A2591)
- **iPad mini:** 6th Generation (Models: A2567, A2568, A2569)

Note: This pencil does not support 2024/2025 New iPad models.

Image: A visual guide displaying different iPad models (iPad mini, iPad Air, iPad Pro 11-inch, iPad Pro 12.9-inch) and their compatible generation numbers and model codes.

Please check your iPad model



iPad Pro 12.9" (3rd gen)	iPad Pro 12.9" (4th gen)	iPad Pro 12.9" (5th gen)	iPad Pro 11"	iPad Air (4th gen)	iPad Air (5th gen)	iPad Mini 7.9" (6th gen)
A1876	A2229	A2378	A2013/A1934	A2316	A2588	A2567
A2014	A2233	A2461	A1979/A1980	A2324	A2589	A2568
A1895	A2069	A2379	A2228/A2231	A2325	A2591	A2569
A1983	A2232	A2462	A2068/A2030	A2072		
			A2377/A2459			
			A2301/A2460			

Image: An illustration demonstrating where to locate the model number on the back of your iPad for compatibility verification.

3. KEY FEATURES

3.1 Magnetic Wireless Charging

The KINGONE Wireless Charging Pencil offers true wireless charging by magnetically attaching to the side of your compatible iPad. This allows for automatic Bluetooth pairing and continuous charging while the pencil is attached, eliminating the need for cables and ensuring the pencil is always ready for use. This design also addresses common issues like overheating and slow charging found in other wireless styluses.

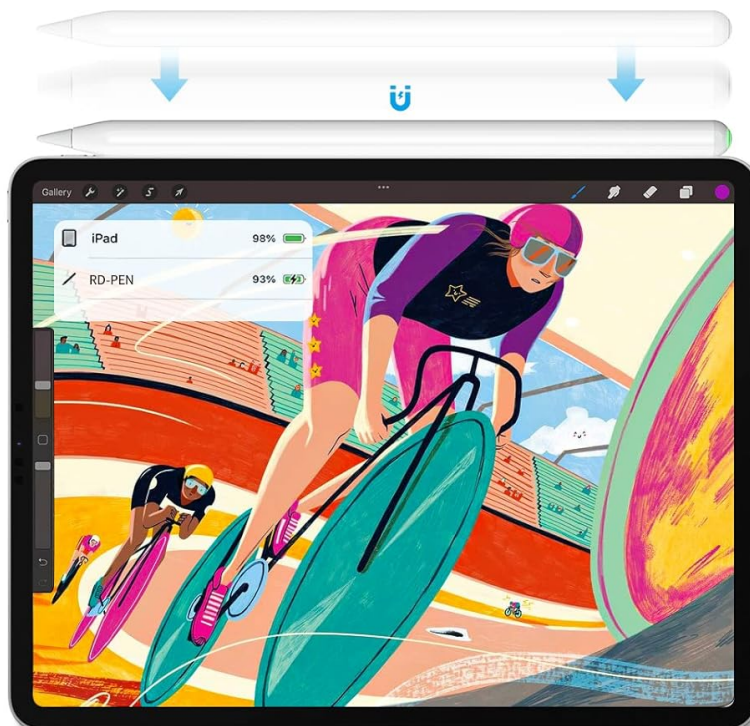
Incredible Precision and High Sensitivity



Image: A visual representation of the pencil wirelessly charging on the side of an iPad, showing charging progress and battery status indicators (breathing red for charging, solid green for working, solid green for 20-100% battery, solid red for 0-20% battery).

New Wireless Charging

No cable needed like applepencil2, it attaches to the side of the iPad magnetically. Automatic Bluetooth pairing and charging. It can also be charged continuously while carrying the iPad



Note: Basic writing functions do not require Bluetooth pairing, but some functions require Bluetooth pairing

Image: The KINGONE pencil is shown magnetically attached to an iPad, with visual effects indicating wireless charging. Battery percentages for both the iPad and the K-PEN are displayed on the iPad screen.

3.2 Ultra-High Precision & Zero Delay

Equipped with an advanced chip, this stylus provides ultra-high precision and virtually zero delay, ensuring a smooth and responsive experience. It effectively resolves issues such as slow response, disconnections, lag, and misalignment, making it suitable for both drawing and note-taking.

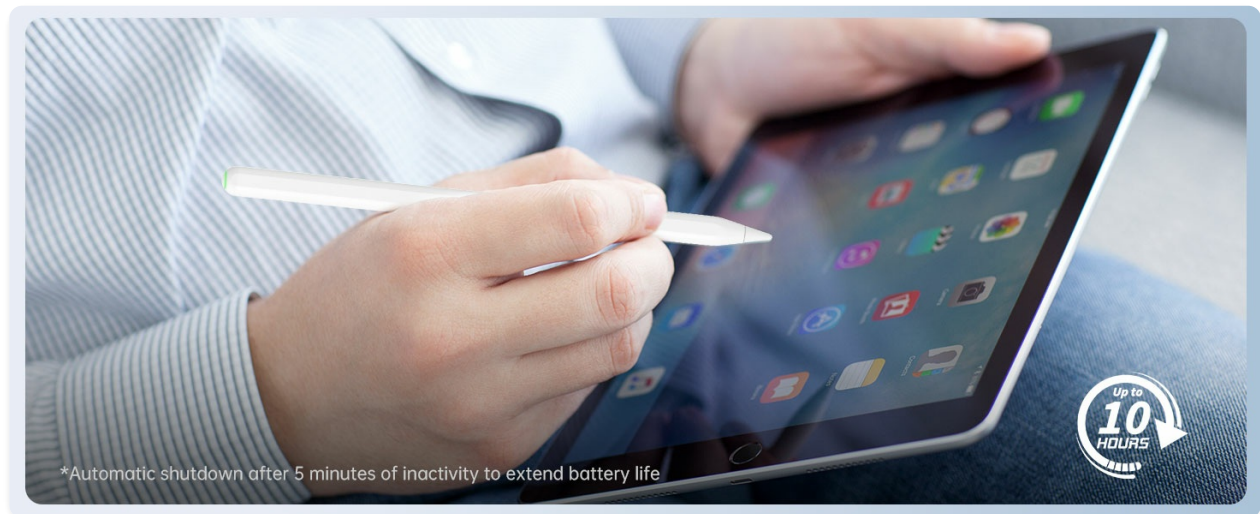
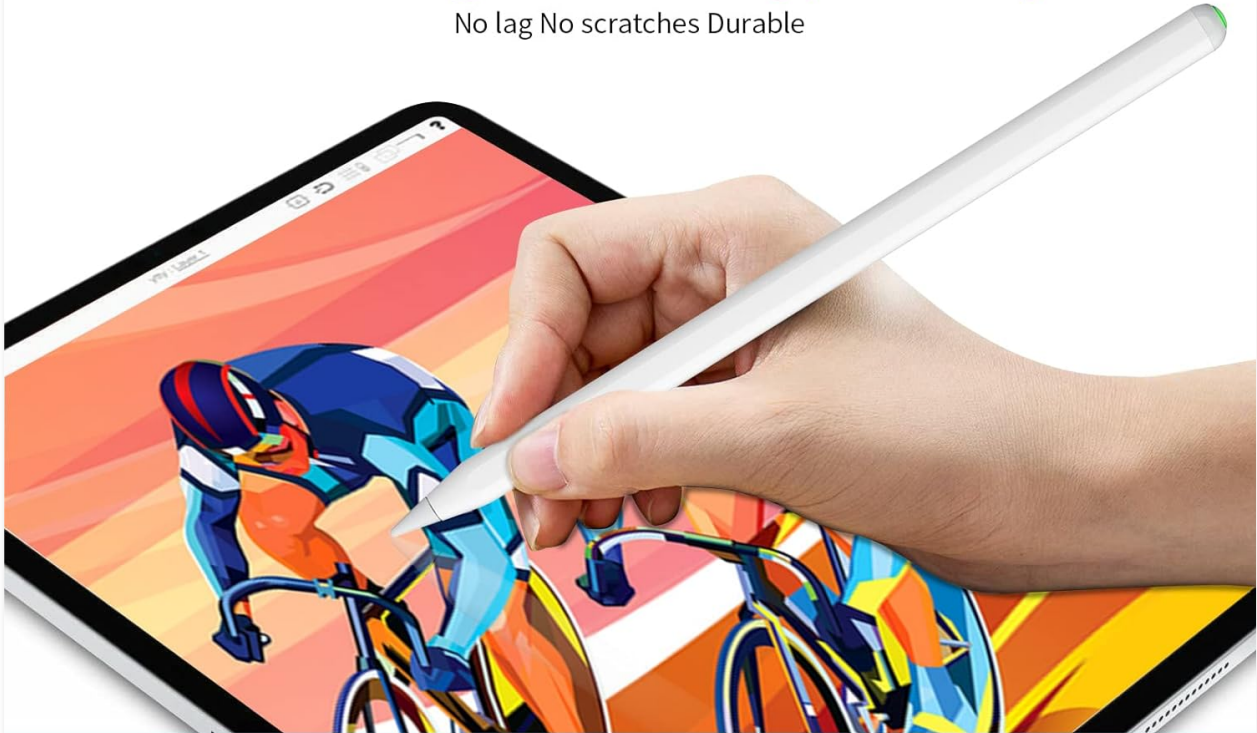


Image: A triptych demonstrating the pencil's high precision and sensitivity across different applications: drawing, learning (document annotation), and working (file management).

Ultra-High Accuracy, 0 delay

No lag No scratches Durable



Our company

KINGONE



Other companies

KINGONE

Image: A side-by-side comparison illustrating the superior accuracy and lack of delay of the KINGONE pencil, producing smooth lines, compared to a generic stylus that produces jagged lines.

3.3 Palm Rejection Function

The stylus incorporates palm rejection technology, allowing you to rest your hand naturally on the iPad screen while writing or drawing, without causing unintended marks or interactions. This provides a comfortable experience similar to writing on paper.

Palm Rejection Function

Because it has the same palm rejection function as the genuine product, no gloves are required, just like drawing on paper, you can naturally put your hand on the iPad



Image: A user's hand is shown resting on the iPad screen while actively using the KINGONE pencil, illustrating the palm rejection feature.

3.4 Tilt Sensing Function

The KINGONE pencil supports tilt sensing, enabling dynamic adjustment of line thickness based on the angle at which the stylus is held. This feature is particularly useful for artistic applications, allowing for varied strokes and shading effects.

How to Connect Bluetooth

Note: If you have paired with other devices, please disconnect them first.

Setp 1



Turn on the Bluetooth

Setp 2



Press once to Turn on "K-PEN"

Setp 3



Connect Bluetooth Called "K-PEN"

How to Add Battery Display

Setp 1



Long Press the Home Screen

Setp 2



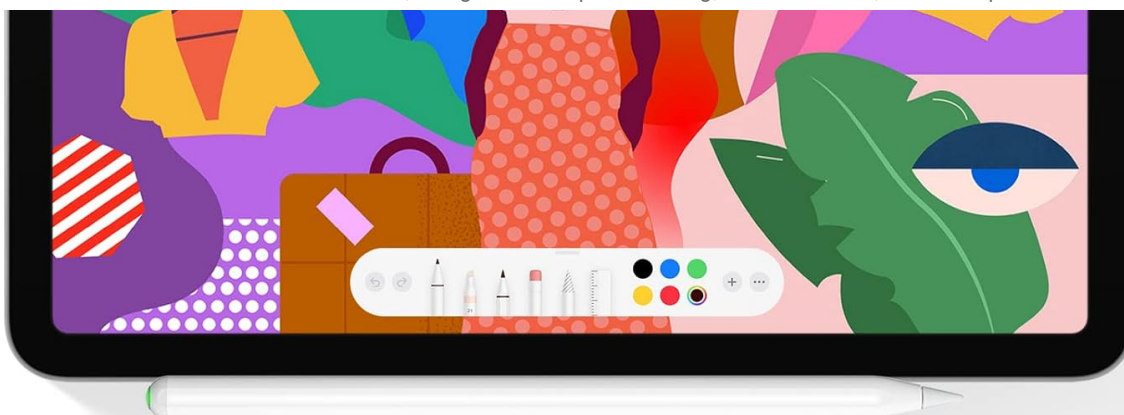
Select the "+" in the upper right corner

Setp 3



Select "Batteries" and add

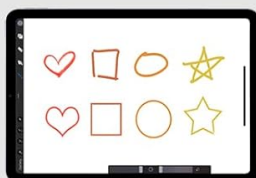
Image: A graphic demonstrating the tilt sensitivity feature, showing how the pencil's angle (from 90° to 15°) influences the thickness of the drawn line, along with examples of no lag, continuous line, and no skip.



6 Usage Tips, More Convenient!!

01

Graphics
correction



04

Press once to
return to the
main screen



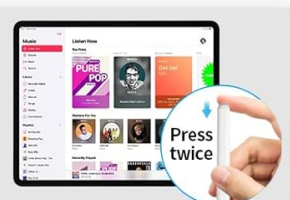
02

Handwritten
text



05

Press twice
to return to
[Recently used
APP interface]



03

Quick
screenshot



06

Tap the screen
twice to open
[Memo]



Image: The KINGONE pencil is shown at various tilt angles (60°, 30°, 15°) on an iPad screen, illustrating how the line thickness changes dynamically with the angle. Compatible drawing applications like SketchBook, Noteshell, Art Set, Procreate, and Paper are also displayed.

4. SETUP AND CONNECTION

4.1 How to Connect Bluetooth

For full functionality, including battery display and shortcut features, connect the KINGONE Wireless Charging Pencil via Bluetooth. If you have previously paired other styluses, please disconnect them first.

1. **Step 1:** Turn on Bluetooth on your iPad.
2. **Step 2:** Press the physical button on the pencil once to turn on "K-PEN".
3. **Step 3:** In your iPad's Bluetooth settings, select and connect to the device named "K-PEN".

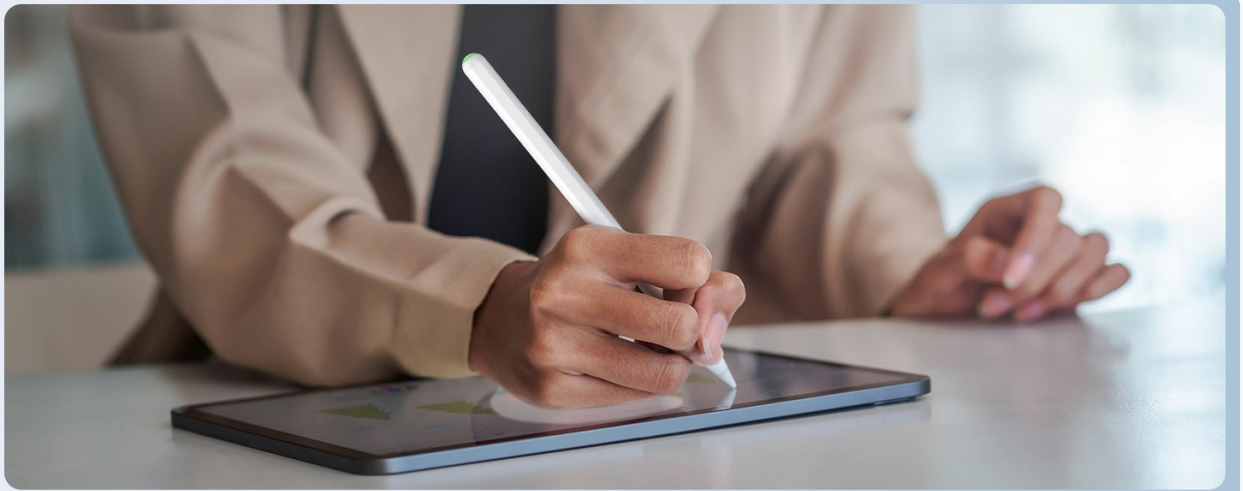


Image: A two-part diagram illustrating the process of connecting the pencil via Bluetooth (Turn on Bluetooth, Press once to turn on "K-PEN", Connect "K-PEN") and adding the battery display widget to the iPad's home screen (Long Press Home Screen, Select "+", Select "Batteries").

4.2 How to Add Battery Display

To monitor the pencil's battery level directly on your iPad:

1. **Step 1:** Long press on an empty area of your iPad's Home Screen until app icons jiggle.
2. **Step 2:** Tap the "+" icon in the upper right corner of the screen.
3. **Step 3:** Scroll down and select "Batteries" from the widgets list, then add it to your Home Screen.

5. OPERATING INSTRUCTIONS

5.1 General Usage Tips

The KINGONE Wireless Charging Pencil features physical buttons for enhanced ease of use, preventing accidental power on/off. It offers several convenient functions:

- **Graphics Correction:** Automatically corrects drawn shapes for neatness.
- **Handwritten Text:** Enables direct handwriting input into text fields.
- **Quick Screenshot:** Capture screen content instantly.
- **Return to Main Screen:** Press once to go back to the home screen.

- **Return to Recently Used APP Interface:** Press twice to access the app switcher.
- **Tap to Open Memo:** Tap the pencil to quickly open the Notes app.

Tilt Sensing Function

Good tilt angle sensitivity, line thickness can be adjusted freely.
Great for drawing!



SketchBook



Notesshelf



Art Set



Procreate



Paper

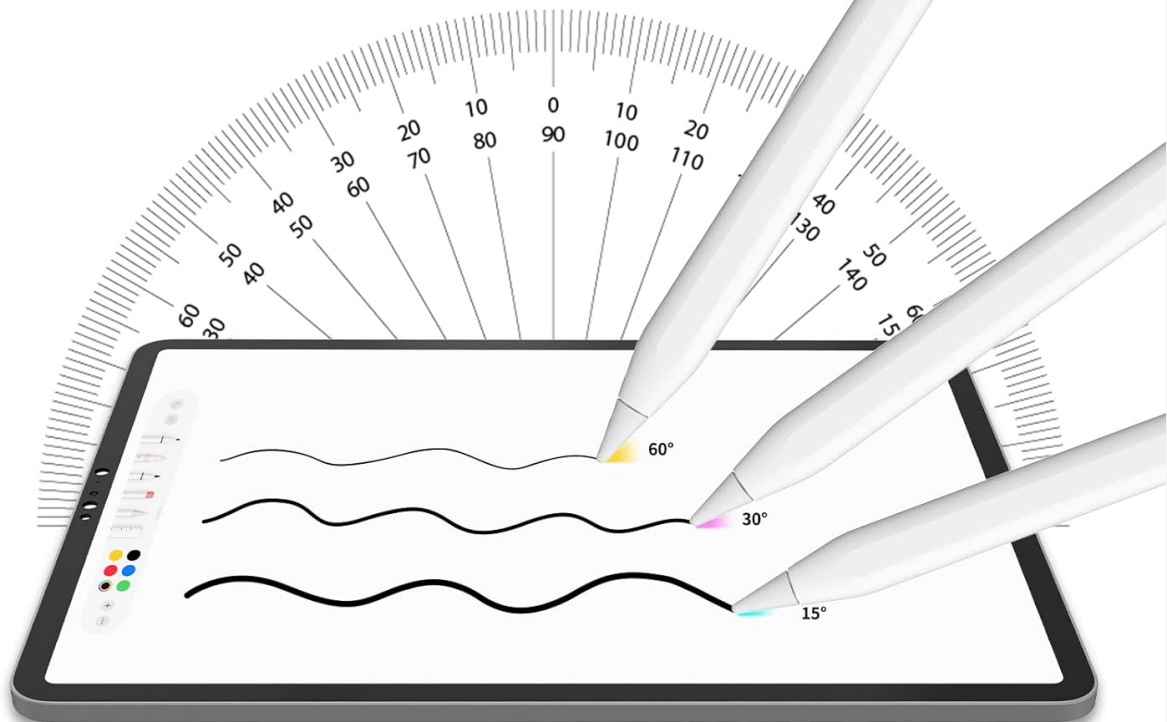


Image: A visual guide detailing six convenient functions of the KINGONE pencil: graphics correction, handwritten text, quick screenshot, single press to return to the main screen, double press to return to the recently used app interface, and tap to open Memo.

5.2 Bluetooth Shortcut Functions

Once connected via Bluetooth, the pencil offers additional shortcut functionalities:

- **Single-tap:** Returns to the desktop/home screen.
- **Double-tap:** Opens the task manager/app switcher.
- **Triple-tap:** Takes a screenshot.

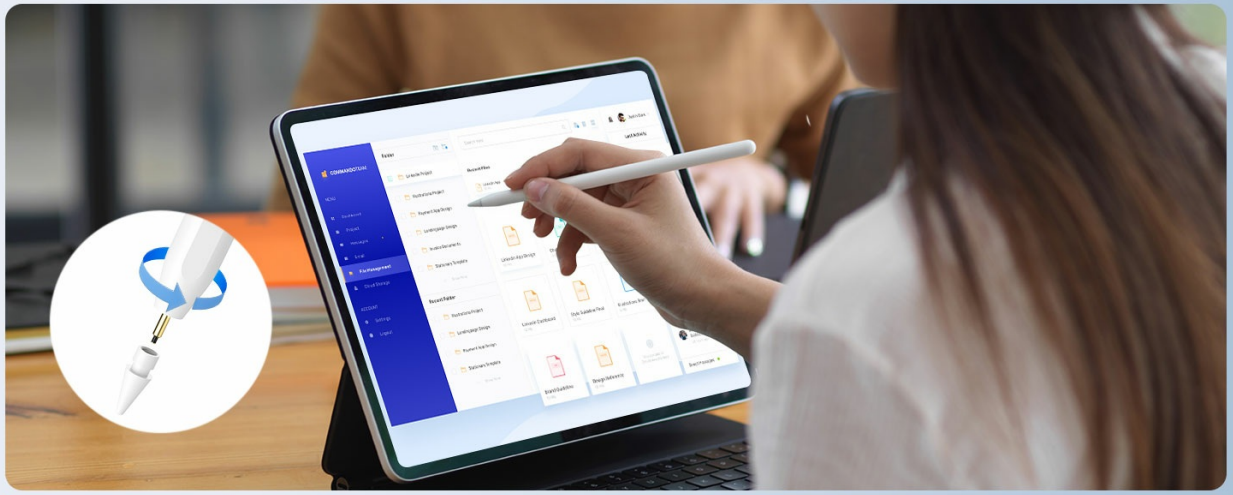


Image: A visual explanation of the Bluetooth shortcut functions: single-tap to return to the desktop, double-tap to open the task manager, and triple-tap to quickly take a screenshot.

6. MAINTENANCE

6.1 Nib Replacement

The KINGONE Wireless Charging Pencil features a detachable nib that is interchangeable with Apple Pencil 1st/2nd generation nibs. To replace the nib:

1. Gently twist the existing nib counter-clockwise to remove it.
2. Align the new nib with the pencil tip and twist clockwise until securely fastened.

Only Compatible with the Below iPad Models

Please check your iPad model number before ordering.



iPad mini

6th Generation

A2567 / A2569 / A2568



iPad Air

4th and 5th Generation

A2316 / A2325 / A2324 / A2072
A2588 / A2589 / A2591



iPad Pro 11-inch

1st, 2nd, 3rd, and 4th Generation

A1980 / A2013 / A1934 / A1979
A2228 / A2068 / A2030 / A2231
A2460 / A2301 / A2459 / A2377



iPad Pro 12.9-inch

3rd, 4th, 5th, and 6th Generation

A1876 / A2014 / A1895 / A1983
A2229 / A2233 / A2069 / A2232
A2462 / A2379 / A2461 / A2378

Image: An illustration demonstrating the simple process of twisting the pencil nib to detach and reattach it for replacement.

6.2 Battery Life and Power Saving

The pencil is designed for extended use, offering up to 10 hours of continuous operation. It features an automatic shutdown mechanism after 5 minutes of inactivity to conserve battery life.

Get More Bluetooth Shortcut Function

1. Bluetooth Shortcut Function

- 1 **Single-tap**
to desktop
- 2 **Double-tap**
to task manager
- 3 **Triple-tap**
screenshot



2. Quickly Screenshot

Sweep the left corner



3. Quickly Write Notes

Sweep the right corner



Image: A user is shown holding an iPad and using the KINGONE pencil, with a graphic highlighting the pencil's battery life of up to 10 hours and its automatic shutdown feature after 5 minutes of inactivity.

7. TROUBLESHOOTING

If you encounter any issues with your KINGONE Wireless Charging Pencil, consider the following common solutions:

- **No Response/Lag:** Ensure the pencil is fully charged. Disconnect and re-pair the Bluetooth connection.
- **Disconnection:** Check if the pencil is within range of the iPad. Ensure no other Bluetooth devices are causing interference. Re-pair if necessary.
- **Misalignment:** Verify that the nib is securely attached. Restart your iPad and the pencil.
- **Charging Issues:** Ensure the pencil is correctly aligned on the iPad's magnetic charging area. Check if your iPad model supports magnetic charging for styluses.
- **Accidental Touches:** Confirm that palm rejection is functioning. Ensure your iPad's software is up to date.

If problems persist, please refer to the support section for contact information.

8. SPECIFICATIONS

Attribute	Detail
Brand	Kingone
Manufacturer	KINGONE
Product Dimensions	1 x 17.2 x 1 cm
Item Weight	360 g
Batteries	1 Lithium Ion battery (included)

Attribute	Detail
Battery Description	Lithium-Ion
Battery Average Life Standby	30 Days
Charging Time	60 Minutes
Material	Plastic
Colour	White
Country of Origin	China

9. WARRANTY AND SUPPORT

For any product-related inquiries, technical assistance, or warranty claims, please contact KINGONE customer service. When contacting support, please provide your Order ID and a detailed description of the issue, including photos or videos if applicable, to expedite resolution.

Customer Service Email: ind-support@kingoneglobal.com

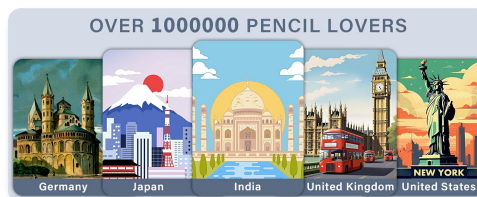
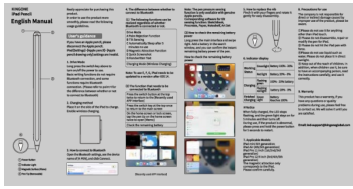


Image: A QR code for instant support via WhatsApp. Instructions indicate to scan the code, send your Order ID, and describe the issue with optional photos/videos for faster resolution. [Click here to open WhatsApp support.](#)

Related Documents

	<p>KINGONE iPad Pencil (P12) User Manual and Specifications</p> <p>Comprehensive user manual for the KINGONE iPad Pencil (P12) stylus, detailing features, charging methods, Bluetooth connectivity, troubleshooting, and compatibility with various Apple iPad models.</p>
	<p>KINGONE iPad Pencil User Manual: Features, Usage, and Precautions</p> <p>Comprehensive user manual for the KINGONE iPad Pencil, detailing its features like Drive Mode, Bluetooth connectivity, charging, indicator display, and precautions for optimal use with compatible iPads.</p>
	<p>KINGONE iPad Pencil - English Manual</p> <p>User's guide for the KINGONE iPad Pencil, covering drive mode, charging, Bluetooth connection, indicator display, nib replacement, and precautions.</p>



[KINGONE iPad Pencil User Manual: Features, Usage, and Precautions](#)

Comprehensive user manual for the KINGONE iPad Pencil, detailing its features like Drive Mode, Bluetooth connectivity, charging, indicator display, and precautions for optimal use with compatible iPads.

lang: **score:22** filesize: 385.94 K page_count: 1 document date: 2022-11-08