

## Edifier MR3

# Edifier MR3 Powered Studio Monitor Speakers Instruction Manual

MODEL: MR3

## Introduction

The Edifier MR3 Powered Studio Monitor Speakers are designed to provide accurate and precise audio reproduction for various applications, including music creation, video editing, and daily listening. Featuring Hi-Res Audio certification and versatile connectivity options, these active bookshelf loudspeakers offer a customizable sound experience in a compact form factor.

## Features

- **Hi-Res Audio Certified:** Delivers a flat frequency response across 52Hz to 40kHz for precise and accurate monitoring.
- **Rich Connectivity:** Includes Balanced TRS, RCA, and AUX inputs, a headphone output, and Bluetooth V5.4 with multi-point connection.
- **Powerful Sound Output:** 18W\*2 RMS output with a peak SPL of 92.5dB, featuring 3.5" mid-low drivers and 1" tweeters.
- **Customizable Sound Experience:** Easily switch between Music, Monitor, and Custom modes. Fine-tune sound via the EDIFIER ConneX app for in-depth adjustments and personalized EQ control.
- **User-Friendly Design:** MDF cabinet construction reduces distortion, making it suitable for audio production, video editing, guitar playing, and daily listening.

## Unboxing and Initial Setup

This video provides a quick overview of the Edifier MR3 speakers, including unboxing and key specifications.

Video: Edifier MR3 Unboxing & Quick Specs. This video demonstrates the unboxing process and highlights the main features and specifications of the Edifier MR3 speakers.

## Package Contents

- Edifier MR3 Powered Studio Monitor Speakers (1 pair)
- Speaker connecting cable (8ft)
- Power cable (6ft)
- 3.5mm TRS to RCA cable (65")
- 3.5mm TRS to 3.5mm TRS cable (65")
- Quick Start Guide
- Warranty Card

## Speaker Placement

For optimal sound, place the speakers on a stable surface, ideally at ear level, forming an equilateral triangle with your listening position. Ensure adequate space behind the speakers for the rear-firing bass port.



Image: Edifier MR3 speakers positioned on a desk, demonstrating a typical setup for audio production or computer use.

## Operating Instructions

### Front Panel Controls



Image: Front panel of the Edifier MR3 speakers, showing the headphone jack, AUX input, and the multi-function volume/mode knob.

- **Volume/Mode Knob:** Rotate to adjust volume. Press to cycle through input modes (Bluetooth, AUX, RCA, TRS). Press and hold to power on/off.
- **Headphone Output:** Connect headphones for private listening.
- **AUX Input:** Connect devices using a 3.5mm audio cable.

### Sound Modes

The MR3 speakers offer three distinct sound modes:

- **Monitor Mode:** Provides a flat, neutral frequency response for critical listening and audio mixing.
- **Music Mode:** Enhances bass and treble for a more engaging listening experience.
- **Custom Mode:** Allows personalized EQ settings via the EDIFIER ConneX app.



Image: The Sound Effects menu within the EDIFIER ConneX app, illustrating the Monitor, Music, and Customized sound modes.

## Connectivity

### Rear Panel Connections



Image: Rear panel of the active Edifier MR3 speaker, detailing the various input ports and acoustic tuning controls.

- **Balanced TRS Input:** For professional audio equipment.
- **RCA Input:** For connecting devices with RCA outputs.
- **AUX Input:** For connecting devices with 3.5mm audio outputs.
- **Bluetooth V5.4:** Wireless connection with multi-point support for simultaneous connection to multiple

devices.

- **Speaker Output:** Connects to the passive speaker using the provided speaker cable.

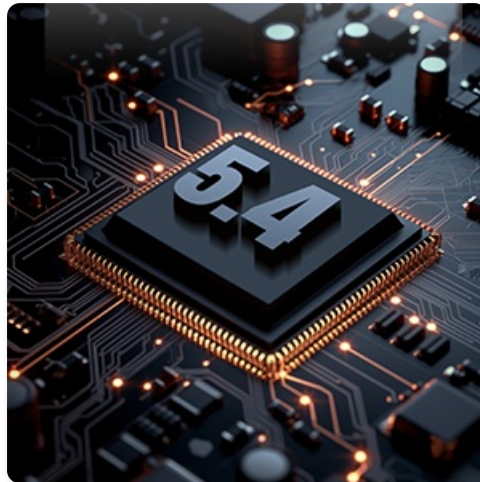


Image: Bluetooth V5.4 technology ensures stable and high-quality wireless audio streaming.

## Acoustic Tuning and App Control

The Edifier MR3 speakers feature physical acoustic tuning knobs on the rear panel and advanced control via the EDIFIER ConneX app.

### Physical Tuning Knobs

- **High Frequency Knob:** Adjusts treble levels.
- **Low Frequency Knob:** Adjusts bass levels.

### EDIFIER ConneX App

The EDIFIER ConneX app provides comprehensive control over your MR3 speakers, allowing for detailed sound customization and acoustic adjustments.

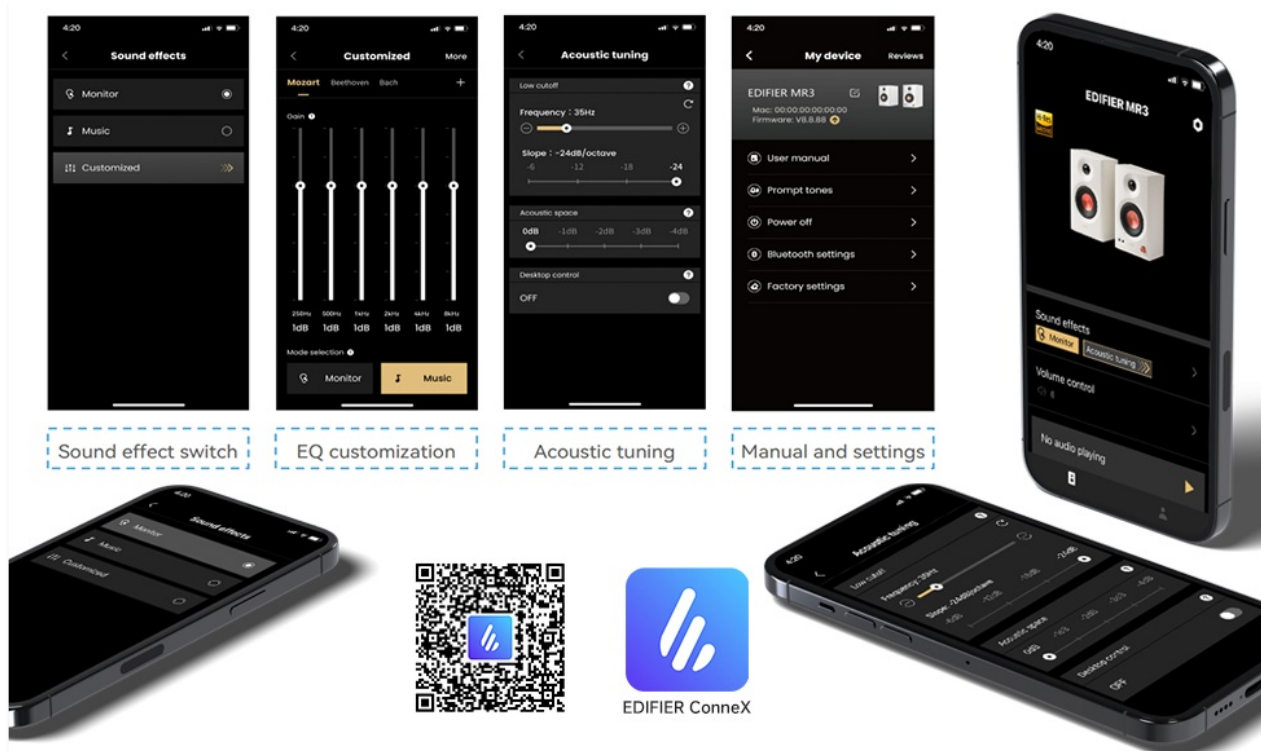


Image: Overview of the EDIFIER ConneX app interface, detailing options for sound effects, EQ customization, acoustic tuning, and access to the user manual and settings.

- **Sound Effects:** Switch between Monitor, Music, and Custom modes.
- **EQ Customization:** Fine-tune specific frequency bands in Custom mode.
- **Acoustic Tuning:** Adjust low cutoff frequency, slope, and acoustic space compensation (e.g., for placement near walls or corners).
- **Desktop Control:** Optimize sound for desktop placement.
- **Firmware Updates:** Keep your speakers updated with the latest features and improvements.

Download the EDIFIER ConneX app: [EDIFIER ConneX App](#)

## Maintenance

- Keep the speakers away from moisture and direct sunlight.
- Clean the cabinet with a soft, dry cloth. Do not use liquid cleaners or aerosols.
- Avoid placing heavy objects on the speakers.
- Ensure proper ventilation around the speakers.

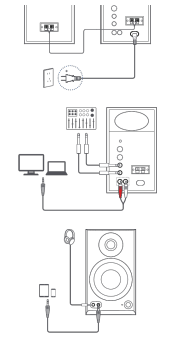
## Troubleshooting

- **No Sound:** Check power connection, input source selection, and volume levels. Ensure all cables are securely connected.
- **Distorted Sound:** Reduce volume, check audio source quality, and ensure cables are not damaged. Adjust acoustic tuning if necessary.
- **Bluetooth Pairing Issues:** Ensure speakers are in Bluetooth mode and discoverable. Forget the device on your source device and try pairing again.
- **Static Noise:** Try plugging the speakers into a different power outlet, away from other electronic devices that might cause interference.

## Specifications

Feature	Detail
Brand	Edifier
Model Number	MR3
Mounting Type	Shelf Mount
Material	Wood (MDF Cabinet)
Speaker Type	Monitor
Connectivity Technology	Auxiliary, Bluetooth, RCA, TRS Balanced
Wireless Communication Technology	Bluetooth V5.4
Speaker Maximum Output Power	36 Watts (18W*2 RMS)
Frequency Response	52Hz - 40kHz (Hi-Res Audio Certified)
Woofer Diameter	3.5 Inches

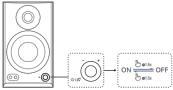




Note

- Power input: 100-240V~50/60Hz
- This plug type is used for the power source only.
- An audio cable (not included) is required to be used in parallel.
- The speaker will be muted when you connect your headphones to the "L2" port.
- You can control the background volume with the volume knob on the speaker.

#### 4. Mode switch



Press and hold the "Q" knob to switch the speaker between work mode and standby mode.

#### 5. Control

Reference	Icon	Action
Work mode		Press to switch sound effects.
Work mode		Rotate clockwise to increase volume.
Work mode		Rotate counterclockwise to decrease volume.
Bluetooth device		Press and hold to disconnect the Bluetooth device and switch the speaker to Bluetooth pairing mode.
Bluetooth hidden mode		Press to exit Bluetooth hidden mode and enter Bluetooth pairing mode.

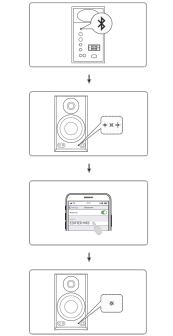
Note: Volume keys are not supported. To adjust the volume, adjust on the speaker and your device separately.

#### 6. Indicator status

Indicator status	Speaker status
Solid red	Monitor sound effect
Solid green	Music sound effect
Solid white	Customized sound effect
Blinking	Bluetooth pairing mode
Blinking and then is solid	Bluetooth device connected
Blinking in red and green	Upgrading the firmware

#### 7. Bluetooth connection

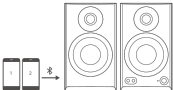
1. Press the "W" button on the speaker. The indicator will blink.
2. On your device, select "EDIFIER MR3" in the Bluetooth device list to connect. The indicator will be steadily on when the connection is established.
3. To connect a second device, hold the "W" button on the speaker for 5 seconds. The device after it is connected to work mode. If not, press the "W" button on the speaker to activate the connection.
4. To disconnect from the current Bluetooth device, press and hold the "W" button on the speaker for 10 seconds.



Note

- The code for connection is "0000" or "1234".
- To enjoy all Bluetooth functions of this product, make sure that your audio source device supports A2DP and AVRCP profiles.
- If the device is connected in 2 minutes, the speaker will switch to Bluetooth hidden mode. In this mode, the speaker will not be visible to other Bluetooth devices. To connect a second device, hold the "W" button on the speaker for 5 seconds. The device after it is connected to work mode. If not, press the "W" button on the speaker to activate the connection.
- To disconnect from the current Bluetooth device, press and hold the "W" button on the speaker for 10 seconds.

#### 8. Multipoint connection



This speaker supports the simultaneous connection of two Bluetooth devices.

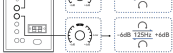
1. Connect the first Bluetooth device to the speaker.
2. Press and hold the "W" button on the speaker for 10 seconds.
3. On the second Bluetooth device, select "EDIFIER MR3" in the Bluetooth device list to connect.
4. On the first Bluetooth device, select "EDIFIER MR3" in the Bluetooth device list to disconnect.
5. When the speaker is played on a desktop or an Android is played on a desktop, the speaker will stop playback on the current Bluetooth device before streaming audio from the second one.

#### 9. Acoustic tuning

By the speaker knob


"Right" knob: Turn the knob to boost or cut high frequencies above 10kHz by +6dB/-6dB.

"Left" knob: Turn the knob to boost or cut low frequencies around 100Hz by +6dB/-6dB.



By the EDIFIER Connect App

Low cutoff frequency: 20 Hz, 30 Hz, 40 Hz, 50 Hz, 60 Hz, 70 Hz, 80 Hz, 90 Hz, 100 Hz, 110 Hz, 120 Hz, 130 Hz, 140 Hz, 150 Hz, 160 Hz, 170 Hz, 180 Hz, 190 Hz, 200 Hz, 210 Hz, 220 Hz, 230 Hz, 240 Hz, 250 Hz, 260 Hz, 270 Hz, 280 Hz, 290 Hz, 300 Hz, 310 Hz, 320 Hz, 330 Hz, 340 Hz, 350 Hz, 360 Hz, 370 Hz, 380 Hz, 390 Hz, 400 Hz, 410 Hz, 420 Hz, 430 Hz, 440 Hz, 450 Hz, 460 Hz, 470 Hz, 480 Hz, 490 Hz, 500 Hz, 510 Hz, 520 Hz, 530 Hz, 540 Hz, 550 Hz, 560 Hz, 570 Hz, 580 Hz, 590 Hz, 600 Hz, 610 Hz, 620 Hz, 630 Hz, 640 Hz, 650 Hz, 660 Hz, 670 Hz, 680 Hz, 690 Hz, 700 Hz, 710 Hz, 720 Hz, 730 Hz, 740 Hz, 750 Hz, 760 Hz, 770 Hz, 780 Hz, 790 Hz, 800 Hz, 810 Hz, 820 Hz, 830 Hz, 840 Hz, 850 Hz, 860 Hz, 870 Hz, 880 Hz, 890 Hz, 900 Hz, 910 Hz, 920 Hz, 930 Hz, 940 Hz, 950 Hz, 960 Hz, 970 Hz, 980 Hz, 990 Hz, 1000 Hz, 1010 Hz, 1020 Hz, 1030 Hz, 1040 Hz, 1050 Hz, 1060 Hz, 1070 Hz, 1080 Hz, 1090 Hz, 1100 Hz, 1110 Hz, 1120 Hz, 1130 Hz, 1140 Hz, 1150 Hz, 1160 Hz, 1170 Hz, 1180 Hz, 1190 Hz, 1200 Hz, 1210 Hz, 1220 Hz, 1230 Hz, 1240 Hz, 1250 Hz, 1260 Hz, 1270 Hz, 1280 Hz, 1290 Hz, 1300 Hz, 1310 Hz, 1320 Hz, 1330 Hz, 1340 Hz, 1350 Hz, 1360 Hz, 1370 Hz, 1380 Hz, 1390 Hz, 1400 Hz, 1410 Hz, 1420 Hz, 1430 Hz, 1440 Hz, 1450 Hz, 1460 Hz, 1470 Hz, 1480 Hz, 1490 Hz, 1500 Hz, 1510 Hz, 1520 Hz, 1530 Hz, 1540 Hz, 1550 Hz, 1560 Hz, 1570 Hz, 1580 Hz, 1590 Hz, 1600 Hz, 1610 Hz, 1620 Hz, 1630 Hz, 1640 Hz, 1650 Hz, 1660 Hz, 1670 Hz, 1680 Hz, 1690 Hz, 1700 Hz, 1710 Hz, 1720 Hz, 1730 Hz, 1740 Hz, 1750 Hz, 1760 Hz, 1770 Hz, 1780 Hz, 1790 Hz, 1800 Hz, 1810 Hz, 1820 Hz, 1830 Hz, 1840 Hz, 1850 Hz, 1860 Hz, 1870 Hz, 1880 Hz, 1890 Hz, 1900 Hz, 1910 Hz, 1920 Hz, 1930 Hz, 1940 Hz, 1950 Hz, 1960 Hz, 1970 Hz, 1980 Hz, 1990 Hz, 2000 Hz, 2010 Hz, 2020 Hz, 2030 Hz, 2040 Hz, 2050 Hz, 2060 Hz, 2070 Hz, 2080 Hz, 2090 Hz, 2100 Hz, 2110 Hz, 2120 Hz, 2130 Hz, 2140 Hz, 2150 Hz, 2160 Hz, 2170 Hz, 2180 Hz, 2190 Hz, 2200 Hz, 2210 Hz, 2220 Hz, 2230 Hz, 2240 Hz, 2250 Hz, 2260 Hz, 2270 Hz, 2280 Hz, 2290 Hz, 2300 Hz, 2310 Hz, 2320 Hz, 2330 Hz, 2340 Hz, 2350 Hz, 2360 Hz, 2370 Hz, 2380 Hz, 2390 Hz, 2400 Hz, 2410 Hz, 2420 Hz, 2430 Hz, 2440 Hz, 2450 Hz, 2460 Hz, 2470 Hz, 2480 Hz, 2490 Hz, 2500 Hz, 2510 Hz, 2520 Hz, 2530 Hz, 2540 Hz, 2550 Hz, 2560 Hz, 2570 Hz, 2580 Hz, 2590 Hz, 2600 Hz, 2610 Hz, 2620 Hz, 2630 Hz, 2640 Hz, 2650 Hz, 2660 Hz, 2670 Hz, 2680 Hz, 2690 Hz, 2700 Hz, 2710 Hz, 2720 Hz, 2730 Hz, 2740 Hz, 2750 Hz, 2760 Hz, 2770 Hz, 2780 Hz, 2790 Hz, 2800 Hz, 2810 Hz, 2820 Hz, 2830 Hz, 2840 Hz, 2850 Hz, 2860 Hz, 2870 Hz, 2880 Hz, 2890 Hz, 2900 Hz, 2910 Hz, 2920 Hz, 2930 Hz, 2940 Hz, 2950 Hz, 2960 Hz, 2970 Hz, 2980 Hz, 2990 Hz, 3000 Hz, 3010 Hz, 3020 Hz, 3030 Hz, 3040 Hz, 3050 Hz, 3060 Hz, 3070 Hz, 3080 Hz, 3090 Hz, 3100 Hz, 3110 Hz, 3120 Hz, 3130 Hz, 3140 Hz, 3150 Hz, 3160 Hz, 3170 Hz, 3180 Hz, 3190 Hz, 3200 Hz, 3210 Hz, 3220 Hz, 3230 Hz, 3240 Hz, 3250 Hz, 3260 Hz, 3270 Hz, 3280 Hz, 3290 Hz, 3300 Hz, 3310 Hz, 3320 Hz, 3330 Hz, 3340 Hz, 3350 Hz, 3360 Hz, 3370 Hz, 3380 Hz, 3390 Hz, 3400 Hz, 3410 Hz, 3420 Hz, 3430 Hz, 3440 Hz, 3450 Hz, 3460 Hz, 3470 Hz, 3480 Hz, 3490 Hz, 3500 Hz, 3510 Hz, 3520 Hz, 3530 Hz, 3540 Hz, 3550 Hz, 3560 Hz, 3570 Hz, 3580 Hz, 3590 Hz, 3600 Hz, 3610 Hz, 3620 Hz, 3630 Hz, 3640 Hz, 3650 Hz, 3660 Hz, 3670 Hz, 3680 Hz, 3690 Hz, 3700 Hz, 3710 Hz, 3720 Hz, 3730 Hz, 3740 Hz, 3750 Hz, 3760 Hz, 3770 Hz, 3780 Hz, 3790 Hz, 3800 Hz, 3810 Hz, 3820 Hz, 3830 Hz, 3840 Hz, 3850 Hz, 3860 Hz, 3870 Hz, 3880 Hz, 3890 Hz, 3900 Hz, 3910 Hz, 3920 Hz, 3930 Hz, 3940 Hz, 3950 Hz, 3960 Hz, 3970 Hz, 3980 Hz, 3990 Hz, 4000 Hz, 4010 Hz, 4020 Hz, 4030 Hz, 4040 Hz, 4050 Hz, 4060 Hz, 4070 Hz, 4080 Hz, 4090 Hz, 4100 Hz, 4110 Hz, 4120 Hz, 4130 Hz, 4140 Hz, 4150 Hz, 4160 Hz, 4170 Hz, 4180 Hz, 4190 Hz, 4200 Hz, 4210 Hz, 4220 Hz, 4230 Hz, 4240 Hz, 4250 Hz, 4260 Hz, 4270 Hz, 4280 Hz, 4290 Hz, 4300 Hz, 4310 Hz, 4320 Hz, 4330 Hz, 4340 Hz, 4350 Hz, 4360 Hz, 4370 Hz, 4380 Hz, 4390 Hz, 4400 Hz, 4410 Hz, 4420 Hz, 4430 Hz, 4440 Hz, 4450 Hz, 4460 Hz, 4470 Hz, 4480 Hz, 4490 Hz, 4500 Hz, 4510 Hz, 4520 Hz, 4530 Hz, 4540 Hz, 4550 Hz, 4560 Hz, 4570 Hz, 4580 Hz, 4590 Hz, 4600 Hz, 4610 Hz, 4620 Hz, 4630 Hz, 4640 Hz, 4650 Hz, 4660 Hz, 4670 Hz, 4680 Hz, 4690 Hz, 4700 Hz, 4710 Hz, 4720 Hz, 4730 Hz, 4740 Hz, 4750 Hz, 4760 Hz, 4770 Hz, 4780 Hz, 4790 Hz, 4800 Hz, 4810 Hz, 4820 Hz, 4830 Hz, 4840 Hz, 4850 Hz, 4860 Hz, 4870 Hz, 4880 Hz, 4890 Hz, 4900 Hz, 4910 Hz, 4920 Hz, 4930 Hz, 4940 Hz, 4950 Hz, 4960 Hz, 4970 Hz, 4980 Hz, 4990 Hz, 5000 Hz, 5010 Hz, 5020 Hz, 5030 Hz, 5040 Hz, 5050 Hz, 5060 Hz, 5070 Hz, 5080 Hz, 5090 Hz, 5100 Hz, 5110 Hz, 5120 Hz, 5130 Hz, 5140 Hz, 5150 Hz, 5160 Hz, 5170 Hz, 5180 Hz, 5190 Hz, 5200 Hz, 5210 Hz, 5220 Hz, 5230 Hz, 5240 Hz, 5250 Hz, 5260 Hz, 5270 Hz, 5280 Hz, 5290 Hz, 5300 Hz, 5310 Hz, 5320 Hz, 5330 Hz, 5340 Hz, 5350 Hz, 5360 Hz, 5370 Hz, 5380 Hz, 5390 Hz, 5400 Hz, 5410 Hz, 5420 Hz, 5430 Hz, 5440 Hz, 5450 Hz, 5460 Hz, 5470 Hz, 5480 Hz, 5490 Hz, 5500 Hz, 5510 Hz, 5520 Hz, 5530 Hz, 5540 Hz, 5550 Hz, 5560 Hz, 5570 Hz, 5580 Hz, 5590 Hz, 5600 Hz, 5610 Hz, 5620 Hz, 5630 Hz, 5640 Hz, 5650 Hz, 5660 Hz, 5670 Hz, 5680 Hz, 5690 Hz, 5700 Hz, 5710 Hz, 5720 Hz, 5730 Hz, 5740 Hz, 5750 Hz, 5760 Hz, 5770 Hz, 5780 Hz, 5790 Hz, 5800 Hz, 5810 Hz, 5820 Hz, 5830 Hz, 5840 Hz, 5850 Hz, 5860 Hz, 5870 Hz, 5880 Hz, 5890 Hz, 5900 Hz, 5910 Hz, 5920 Hz, 5930 Hz, 5940 Hz, 5950 Hz, 5960 Hz, 5970 Hz, 5980 Hz, 5990 Hz, 6000 Hz, 6010 Hz, 6020 Hz, 6030 Hz, 6040 Hz, 6050 Hz, 6060 Hz, 6070 Hz, 6080 Hz, 6090 Hz, 6100 Hz, 6110 Hz, 6120 Hz, 6130 Hz, 6140 Hz, 6150 Hz, 6160 Hz, 6170 Hz, 6180 Hz, 6190 Hz, 6200 Hz, 6210 Hz, 6220 Hz, 6230 Hz, 6240 Hz, 6250 Hz, 6260 Hz, 6270 Hz, 6280 Hz, 6290 Hz, 6300 Hz, 6310 Hz, 6320 Hz, 6330 Hz, 6340 Hz, 6350 Hz, 6360 Hz, 6370 Hz, 6380 Hz, 6390 Hz, 6400 Hz, 6410 Hz, 6420 Hz, 6430 Hz, 6440 Hz, 6450 Hz, 6460 Hz, 6470 Hz, 6480 Hz, 6490 Hz, 6500 Hz, 6510 Hz, 6520 Hz, 6530 Hz, 6540 Hz, 6550 Hz, 6560 Hz, 6570 Hz, 6580 Hz, 6590 Hz, 6600 Hz, 6610 Hz, 6620 Hz, 6630 Hz, 6640 Hz, 6650 Hz, 6660 Hz, 6670 Hz, 6680 Hz, 6690 Hz, 6700 Hz, 6710 Hz, 6720 Hz, 6730 Hz, 6740 Hz, 6750 Hz, 6760 Hz, 6770 Hz, 6780 Hz, 6790 Hz, 6800 Hz, 6810 Hz, 6820 Hz, 6830 Hz, 6840 Hz, 6850 Hz, 6860 Hz, 6870 Hz, 6880 Hz, 6890 Hz, 6900 Hz, 6910 Hz, 6920 Hz, 6930 Hz, 6940 Hz, 6950 Hz, 6960 Hz, 6970 Hz, 6980 Hz, 6990 Hz, 7000 Hz, 7010 Hz, 7020 Hz, 7030 Hz, 7040 Hz, 7050 Hz, 7060 Hz, 7070 Hz, 7080 Hz, 7090 Hz, 7100 Hz, 7110 Hz, 7120 Hz, 7130 Hz, 7140 Hz, 7150 Hz, 7160 Hz, 7170 Hz, 7180 Hz, 7190 Hz, 7200 Hz, 7210 Hz, 7220 Hz, 7230 Hz, 7240 Hz, 7250 Hz, 7260 Hz, 7270 Hz, 7280 Hz, 7290 Hz, 7300 Hz, 7310 Hz, 7320 Hz, 7330 Hz, 7340 Hz, 7350 Hz, 7360 Hz, 7370 Hz, 7380 Hz, 7390 Hz, 7400 Hz, 7410 Hz, 7420 Hz, 7430 Hz, 7440 Hz, 7450 Hz, 7460 Hz, 7470 Hz, 7480 Hz, 7490 Hz, 7500 Hz, 7510 Hz, 7520 Hz, 7530 Hz, 7540 Hz, 7550 Hz, 7560 Hz, 7570 Hz, 7580 Hz, 7590 Hz, 7600 Hz, 7610 Hz, 7620 Hz, 7630 Hz, 7640 Hz, 7650 Hz, 7660 Hz, 7670 Hz, 7680 Hz, 7690 Hz, 7700 Hz, 7710 Hz, 7720 Hz, 7730 Hz, 7740 Hz, 7750 Hz, 7760 Hz, 7770 Hz, 7780 Hz, 7790 Hz, 7800 Hz, 7810 Hz, 7820 Hz, 7830 Hz, 7840 Hz, 7850 Hz, 7860 Hz, 7870 Hz, 7880 Hz, 7890 Hz, 7900 Hz, 7910 Hz, 7920 Hz, 7930 Hz, 7940 Hz, 7950 Hz, 7960 Hz, 7970 Hz, 7980 Hz, 7990 Hz, 8000 Hz, 8010 Hz, 8020 Hz, 8030 Hz, 8040 Hz, 8050 Hz, 8060 Hz, 8070 Hz, 8080 Hz, 8090 Hz, 8100 Hz, 8110 Hz, 8120 Hz, 8130 Hz, 8140 Hz, 8150 Hz, 8160 Hz, 8170 Hz, 8180 Hz, 8190 Hz, 8200 Hz, 8210 Hz, 8220 Hz, 8230 Hz, 8240 Hz, 8250 Hz, 8260 Hz, 8270 Hz, 8280 Hz, 8290 Hz, 8300 Hz, 8310 Hz, 8320 Hz, 8330 Hz, 8340 Hz, 8350 Hz, 8360 Hz, 8370 Hz, 8380 Hz, 8390 Hz, 8400 Hz, 8410 Hz, 8420 Hz, 8430 Hz, 8440 Hz, 8450 Hz, 8460 Hz, 8470 Hz, 8480 Hz, 8490 Hz, 8500 Hz, 8510 Hz, 8520 Hz, 8530 Hz, 8540 Hz, 8550 Hz, 8560 Hz, 8570 Hz, 8580 Hz, 8590 Hz, 8600 Hz, 8610 Hz, 8620 Hz, 8630 Hz, 8640 Hz, 8650 Hz, 8660 Hz, 8670 Hz, 8680 Hz, 8690 Hz, 8700 Hz, 8710 Hz, 8720 Hz, 8730 Hz, 8740 Hz, 8750 Hz, 8760 Hz, 8770 Hz, 8780 Hz, 8790 Hz, 8800 Hz, 8810 Hz, 8820 Hz, 8830 Hz, 8840 Hz, 8850 Hz, 8860 Hz, 8870 Hz, 8880 Hz, 8890 Hz, 8900 Hz, 8910 Hz, 8920 Hz, 8930 Hz, 8940 Hz, 8950 Hz, 8960 Hz, 8970 Hz, 8980 Hz, 8990 Hz, 9000 Hz, 9010 Hz, 9020 Hz, 9030 Hz, 9040 Hz, 9050 Hz, 9060 Hz, 9070 Hz, 9080 Hz, 9090 Hz, 9100 Hz, 9110 Hz, 9120 Hz, 9130 Hz, 9140 Hz, 9150 Hz, 9160 Hz, 9170 Hz, 9180 Hz, 9190 Hz, 9200 Hz, 9210 Hz, 9220 Hz, 9230 Hz, 9240 Hz, 9250 Hz, 9260 Hz, 9270 Hz, 9280 Hz, 9290 Hz, 9300 Hz, 9310 Hz, 9320 Hz, 9330 Hz, 9340 Hz, 9350 Hz, 9360 Hz, 9370 Hz, 9380 Hz, 9390 Hz, 9400 Hz, 9410 Hz, 9420 Hz, 9430 Hz, 9440 Hz, 9450 Hz, 9460 Hz, 9470 Hz, 9480 Hz, 9490 Hz, 9500 Hz, 9510 Hz, 9520 Hz, 9530 Hz, 9540 Hz, 9550 Hz, 9560 Hz, 9570 Hz, 9580 Hz, 9590 Hz, 9600 Hz, 9610 Hz, 9620 Hz, 9630 Hz, 9640 Hz, 9650 Hz, 9660 Hz, 9670 Hz, 9680 Hz, 9690 Hz, 9700 Hz, 9710 Hz, 9720 Hz, 9730 Hz, 9740 Hz, 9750 Hz, 9760 Hz, 9770 Hz, 9780 Hz, 9790 Hz, 9800 Hz, 9810 Hz, 9820 Hz, 9830 Hz, 9840 Hz, 9850 Hz, 9860 Hz, 9870 Hz, 9880 Hz, 9890 Hz, 9900 Hz, 9910 Hz, 9920 Hz, 9930 Hz, 9940 Hz, 9950 Hz, 9960 Hz, 9970 Hz, 9980 Hz, 9990 Hz, 10000 Hz, 10010 Hz, 10020 Hz, 10030 Hz, 10040 Hz, 10050 Hz, 10060 Hz, 10070 Hz, 10080 Hz, 10090 Hz, 10100 Hz, 10110 Hz, 10120 Hz, 10130 Hz, 10140 Hz, 10150 Hz, 10160 Hz, 10170 Hz, 10180 Hz, 10190 Hz, 10200 Hz, 10210 Hz, 10220 Hz, 10230 Hz, 10240 Hz, 10250 Hz, 10260 Hz, 10270 Hz, 10280 Hz, 10290 Hz, 10300 Hz, 10310 Hz, 10320 Hz, 10330 Hz, 10340 Hz, 10350 Hz, 10360 Hz, 10370 Hz, 10380 Hz, 10390 Hz, 10400 Hz, 10410 Hz, 10420 Hz, 10430 Hz, 10440 Hz, 10450 Hz, 10460 Hz, 10470 Hz, 10480 Hz, 10490 Hz, 10500 Hz, 10510 Hz, 10520 Hz, 10530 Hz, 10540 Hz, 10550 Hz, 10560 Hz, 10570 Hz, 10580 Hz, 10590 Hz, 10600 Hz, 10610 Hz, 10620 Hz, 10630 Hz, 10640 Hz, 10650 Hz, 10660 Hz, 10670 Hz, 10680 Hz, 10690 Hz, 10700 Hz, 10710 Hz, 10720 Hz, 10730 Hz, 10740 Hz, 10750 Hz, 10760 Hz, 10770 Hz, 10780 Hz, 10790 Hz, 10800 Hz, 10810 Hz, 10820 Hz, 10830 Hz, 10840 Hz, 10850 Hz, 10860 Hz, 10870 Hz, 10880 Hz, 10890 Hz, 10900 Hz, 10910 Hz, 10920 Hz, 10930 Hz, 10940 Hz, 10950 Hz, 10960 Hz, 10970 Hz, 10980 Hz, 10990 Hz, 11000 Hz, 11010 Hz, 11020 Hz, 11030 Hz, 11040 Hz, 11050 Hz, 11060 Hz, 11070 Hz, 11080 Hz, 11090 Hz, 11100 Hz, 11110 Hz, 11120 Hz, 11130 Hz, 11140 Hz, 11150 Hz, 11160 Hz, 11170 Hz, 11180 Hz, 11190 Hz, 11200 Hz, 11210 Hz, 11220 Hz, 11230 Hz, 11240 Hz, 11250 Hz, 11260 Hz, 11270 Hz, 11280 Hz, 11290 Hz, 11300 Hz, 11310 Hz, 11320 Hz, 11330 Hz, 11340 Hz, 11350 Hz, 11360 Hz, 11370 Hz, 11380 Hz, 11390 Hz, 11400 Hz, 11410 Hz, 11420 Hz, 11430 Hz, 11440 Hz, 11450 Hz, 11460 Hz, 11470 Hz, 11480 Hz, 11490 Hz, 11500 Hz, 11510 Hz, 11520 Hz, 11530 Hz, 11540 Hz, 11550 Hz, 11560 Hz, 11570 Hz, 11580 Hz, 11590 Hz, 11600 Hz, 11610 Hz, 11620 Hz, 11630 Hz, 11640 Hz, 11650 Hz, 11660 Hz, 11670 Hz, 11680 Hz, 11690 Hz, 11700 Hz, 11710 Hz, 11720 Hz, 11730 Hz, 11740 Hz, 11750 Hz, 11760 Hz, 11770 Hz, 11780 Hz, 11790 Hz, 11800 Hz, 11810 Hz, 11820 Hz, 11830 Hz, 11840 Hz, 11850 Hz, 11860 Hz, 11870 Hz, 11880 Hz, 11890 Hz, 11900 Hz, 11910 Hz, 11920 Hz, 11930 Hz, 11940 Hz, 11950 Hz, 11960 Hz, 11970 Hz, 11980 Hz, 11990 Hz, 12000 Hz, 12010 Hz, 12020 Hz, 12030 Hz, 12040 Hz, 12050 Hz, 12060 Hz, 12070 Hz, 12080 Hz, 12090 Hz, 12100 Hz, 12110 Hz, 12120 Hz, 12130 Hz, 12140 Hz, 12150 Hz, 12160 Hz, 12170 Hz, 12180 Hz, 12190 Hz, 12200 Hz, 12210 Hz, 12220 Hz, 12230 Hz, 12240 Hz, 12250 Hz, 12260 Hz, 12270 Hz, 12280 Hz, 12290 Hz, 12300 Hz, 12310 Hz, 12320 Hz, 12330 Hz, 12340 Hz, 12350 Hz, 12360 Hz, 12370 Hz, 12380 Hz, 12390 Hz, 12400 Hz, 12410 Hz, 12420 Hz, 12430 Hz, 12440 Hz, 12450 Hz, 12460 Hz, 12470 Hz, 12480 Hz, 12490 Hz, 12500 Hz, 12510 Hz, 12520 Hz, 12530 Hz, 12540 Hz, 12550 Hz, 12560 Hz, 12570 Hz, 12580 Hz, 12590 Hz, 12600 Hz, 12610 Hz, 12620 Hz, 12630 Hz, 12640 Hz, 12650 Hz, 12660 Hz, 12670 Hz, 12680 Hz, 12690 Hz, 12700 Hz, 12710 Hz, 12720 Hz, 12730 Hz, 12740 Hz, 12750 Hz, 12760 Hz, 12770 Hz, 12780 Hz, 12790 Hz, 12800 Hz, 12810 Hz, 12820 Hz, 12830 Hz, 12840 Hz, 12850 Hz, 12860 Hz, 12870 Hz, 12880 Hz, 12890 Hz, 12900 Hz, 12910 Hz, 12920 Hz, 12930 Hz, 12940 Hz, 12950 Hz, 12960 Hz, 12970 Hz, 12980 Hz, 12990 Hz, 13000 Hz, 13010 Hz, 13020 Hz, 13030 Hz, 13040 Hz, 13050 Hz, 13060 Hz, 13070 Hz, 13080 Hz, 13090 Hz, 13100 Hz, 13110 Hz, 13120 Hz, 13130 Hz, 13140 Hz, 13150 Hz, 13160 Hz, 13170 Hz, 13180 Hz, 13190 Hz, 13200 Hz, 13210 Hz, 13220 Hz, 13230 Hz, 13240 Hz, 13250 Hz, 13260 Hz, 13270 Hz, 13280 Hz, 13290 Hz, 13300 Hz, 13310 Hz, 13320 Hz, 13330 Hz, 13340 Hz, 13350 Hz, 13360 Hz, 13370 Hz, 13380 Hz, 13390 Hz, 13400 Hz, 13410 Hz, 13420 Hz, 13430 Hz, 13440 Hz, 13450 Hz, 13460 Hz, 13470 Hz, 13480 Hz, 13490 Hz, 13500 Hz, 13510 Hz, 13520 Hz, 13530 Hz, 13540 Hz, 13550 Hz, 13560 Hz, 13570 Hz, 13580 Hz, 13590 Hz, 13600 Hz, 13610 Hz, 13620 Hz, 13630 Hz, 13640 Hz, 13650 Hz, 13660 Hz, 13670 Hz, 13680 Hz, 13690 Hz, 13700 Hz, 13710 Hz, 13720 Hz, 13730 Hz, 13740 Hz, 13750 Hz, 13760 Hz, 13770 Hz, 13780 Hz, 13790 Hz, 13800 Hz, 13810 Hz, 13820 Hz, 13830 Hz, 13840 Hz, 13850 Hz, 13860 Hz, 13870 Hz, 13880 Hz, 13890 Hz, 13900 Hz, 13910 Hz, 13920 Hz, 13930 Hz, 13940 Hz, 13950 Hz, 13960 Hz, 13970 Hz, 13980 Hz, 13990 Hz, 14000 Hz, 14010 Hz, 14020 Hz, 14030 Hz, 14040 Hz, 14050 Hz, 14060 Hz, 14070 Hz, 14080 Hz, 14090 Hz, 14100 Hz, 14110 Hz, 14120 Hz, 14130 Hz, 14140 Hz, 14150 Hz, 14160 Hz, 14170 Hz, 14180 Hz, 14190 Hz, 14200 Hz, 14210 Hz, 14220 Hz, 14230 Hz, 14240 Hz, 14250 Hz, 14260 Hz, 14270 Hz, 14280 Hz, 14

<div></div> <div><div>10. Specifications</div><div>Total output power: 21W, 18W+18W (21W+18W) Frequency response: 60Hz-20KHz Distortion: &lt; 1% Frequency: 20Hz-20KHz RF Power Output: 100mW There is no restriction of use.</div></div> <div><div>11. Troubleshooting</div><div>Cannot connect to your Bluetooth device Please ensure that the distance between this product and your Bluetooth device is less than 10 meters and there are no obstacles between them. Please ensure that the device is connected to this product via Bluetooth. Please ensure that this product is in Bluetooth pairing mode if not, manually search for this device. Restart this product, enable Bluetooth function on your Bluetooth device, and then try again. Reset this product to factory settings and try again. No power Please ensure that the power cable is properly connected. Please ensure that the power supply is not disconnected. No sound Please ensure that this product and your device is properly connected. Please ensure that the correct audio input source is selected. Please ensure that the playback is not paused. Increase the volume of this product and your device. Noise coming from speakers EDIFIER speakers generate little noise, while the background noise of some audio devices are too high. Please adjust audio cables and turn the volume up. If the noise can be heard at 1 meter away from the speaker, there is no problem with this product. To learn more about EDIFIER, please visit <a href="http://www.edifier.com">www.edifier.com</a>. For EDIFIER warranty queries, please visit the relevant country page on <a href="http://www.edifier.com">www.edifier.com</a> and follow the contact information. USA and Canada: <a href="mailto:sales@edifier.us">sales@edifier.us</a> South America: Please visit <a href="http://www.edifier.com">www.edifier.com</a> (English) or <a href="http://www.edifier.com">www.edifier.com</a> (Spanish/Portuguese) for local contact information.</div></div>	
<div><div>EDIFIER®</div><div>MR4 Studio 1.0 monitor</div><div>For more information, please visit <a href="http://www.edifier.com">www.edifier.com</a>. © 2019 EDIFIER. All rights reserved.</div></div>	<p><a href="#">Edifier MR4 Studio Monitor User Manual and Specifications</a></p> <p>User manual and specifications for the Edifier MR4 Studio Monitor speakers. Learn about setup, connections, audio inputs/outputs, functional operation, troubleshooting, and safety guidelines. Features 21W+21W power, 60Hz-20KHz frequency response, and multiple input options. Visit <a href="http://edifier.com">edifier.com</a> for more.</p>
<div><div>EDIFIER®</div><div>S1000MKII Powered Bookshelf Speakers</div><div>For more information, please visit <a href="http://www.edifier.com">www.edifier.com</a>. © 2019 EDIFIER. All rights reserved.</div></div>	<p><a href="#">Edifier S1000MKII Powered Bookshelf Speakers User Manual</a></p> <p>Comprehensive user manual for the Edifier S1000MKII powered bookshelf speakers, covering setup, connectivity, operation, specifications, and troubleshooting. Learn how to connect and use your speakers.</p>
<div><div>EDIFIER®</div><div>R1850DB Powered Bookshelf Speakers</div><div>For more information, please visit <a href="http://www.edifier.com">www.edifier.com</a>. © 2019 EDIFIER. All rights reserved.</div></div>	<p><a href="#">Edifier R1850DB Bluetooth Speaker User Manual</a></p> <p>User manual for the Edifier R1850DB active bookshelf speakers, detailing features, specifications, setup, operation, and troubleshooting for optimal audio performance.</p>
<div><div>EDIFIER®</div><div>S2000MKIII Powered Bookshelf Speakers</div><div>For more information, please visit <a href="http://www.edifier.com">www.edifier.com</a>. © 2019 EDIFIER. All rights reserved.</div></div>	<p><a href="#">Edifier S2000MK III Powered Bookshelf Speakers User Manual</a></p> <p>User manual for the Edifier S2000MK III powered bookshelf speakers, detailing setup, connectivity, operation, specifications, and troubleshooting for high-quality audio.</p>