

Morel Biggie (RM)

Morel Biggie Portable Bluetooth Speaker User Manual

Model: Biggie (RM) | Brand: Morel

1. PRODUCT OVERVIEW

The Morel Biggie is a high-fidelity portable Bluetooth speaker designed to deliver exceptional sound quality in a compact form factor. Featuring precision-handcrafted drivers and advanced DSP technology, it provides a balanced and immersive listening experience. Its robust design and long battery life make it suitable for various indoor environments.

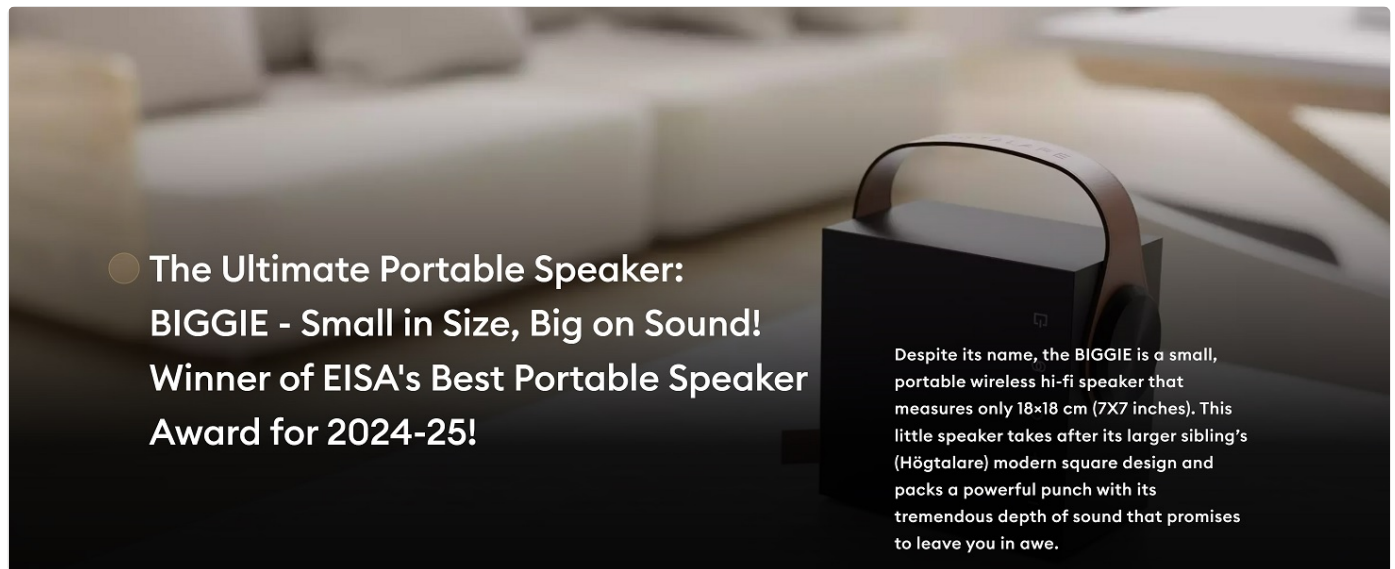


Figure 1.1: The Morel Biggie speaker, showcasing its compact and modern design within a home environment.

Key features include a 2-way bass reflex system with a 4-inch woofer and 25mm soft dome tweeter, ensuring accurate and deep sound reproduction. The customized Digital Signal Processing (DSP) optimizes audio quality, preventing distortion and maintaining natural sound. The Biggie also supports True Wireless Stereo (TWS) pairing for a wider soundstage and offers up to 20 hours of playtime.

2. PACKAGE CONTENTS

Please ensure all items are present in the package:

- Morel Biggie Portable Bluetooth Speaker
- Charging Cable (USB-C)
- User Manual (this document)

3. SETUP GUIDE

3.1 Initial Charging

Before first use, fully charge your Morel Biggie speaker. Connect the provided charging cable to the speaker's charging port and plug the other end into a compatible USB power adapter (not included). The charging indicator light will show the charging status and turn off when fully charged. A full charge provides up to 20 hours of playback.

3.2 Powering On/Off

- **To Power On:** Press and hold the Power button () located on the side panel until you hear an audible chime and the indicator light illuminates.
- **To Power Off:** Press and hold the Power button () until you hear an audible chime and the indicator light turns off.



Figure 3.1: Side panel controls of the Morel Biggie speaker.

3.3 Bluetooth Pairing

The Morel Biggie uses Bluetooth 5.3 for stable and efficient wireless connectivity.

1. Ensure the speaker is powered on and within 50 meters (164 feet) of your Bluetooth device.
2. The speaker will automatically enter pairing mode when powered on for the first time or if no device is connected. The Bluetooth indicator light will flash.

3. On your device (smartphone, tablet, laptop), go to Bluetooth settings and search for available devices.
4. Select "Morel Biggie" from the list.
5. Once connected, the Bluetooth indicator light on the speaker will become solid, and you will hear a confirmation sound.

If you wish to pair with a new device, disconnect the current connection from your device's Bluetooth settings, or press and hold the Bluetooth button on the speaker to enter pairing mode again.

3.4 True Wireless Stereo (TWS) Pairing

For an enhanced stereo soundstage, you can pair two Morel Biggie speakers together wirelessly. This feature will be fully supported with an upcoming app release in 2024.

1. Ensure both Biggie speakers are powered on and not connected to any other Bluetooth devices.
2. On one speaker (this will be your primary speaker), press and hold the TWS pairing button (often indicated by an interlocking circles icon).
3. On the second speaker, briefly press the TWS pairing button.
4. The speakers will attempt to connect to each other. Once successfully paired, you will hear a confirmation sound, and their indicator lights will change to reflect the TWS connection.
5. Now, connect your Bluetooth device to the primary speaker. Audio will play in stereo across both units.

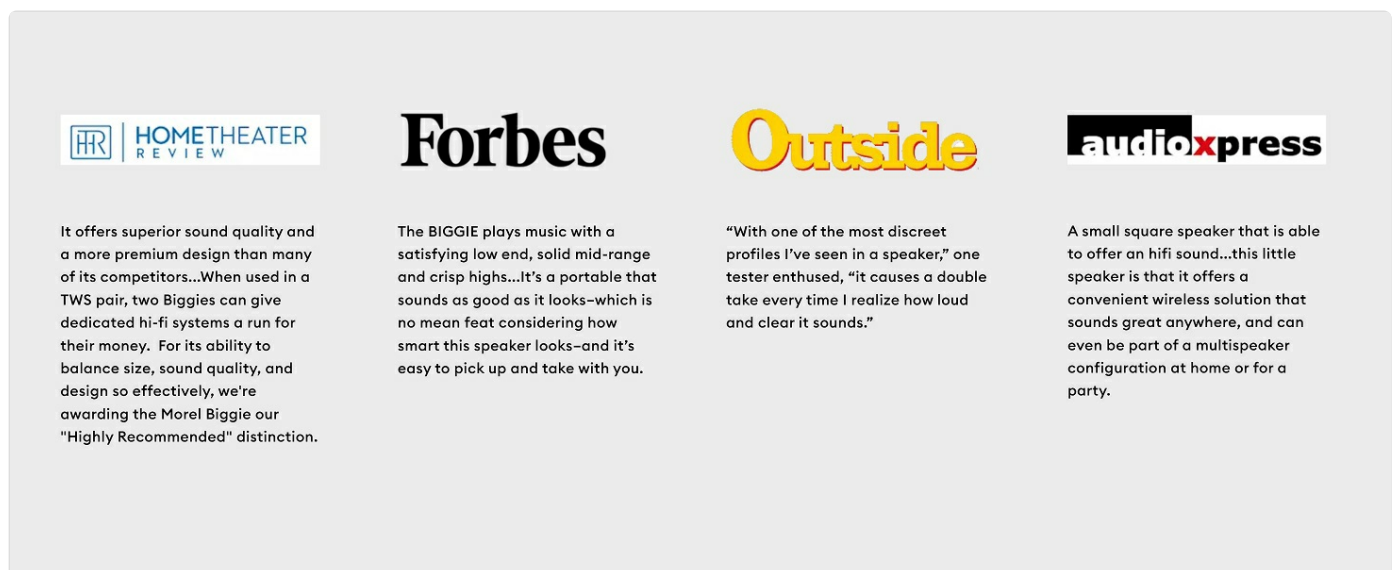


Figure 3.2: Two Morel Biggie speakers ready for True Wireless Stereo (TWS) pairing.

4. OPERATING INSTRUCTIONS

4.1 Basic Controls

The Morel Biggie features intuitive touch controls on its side panel:

- **Power Button ():** Press and hold to power on/off.
- **Bluetooth Button ():** Press and hold to enter Bluetooth pairing mode.
- **Volume Up (+):** Press to increase volume.
- **Volume Down (-):** Press to decrease volume.
- **Play/Pause/Call Answer (Multi-function button, often indicated by a play/pause symbol or phone icon):** Briefly press to play/pause music or answer/end calls. Double-press for next track (if supported).

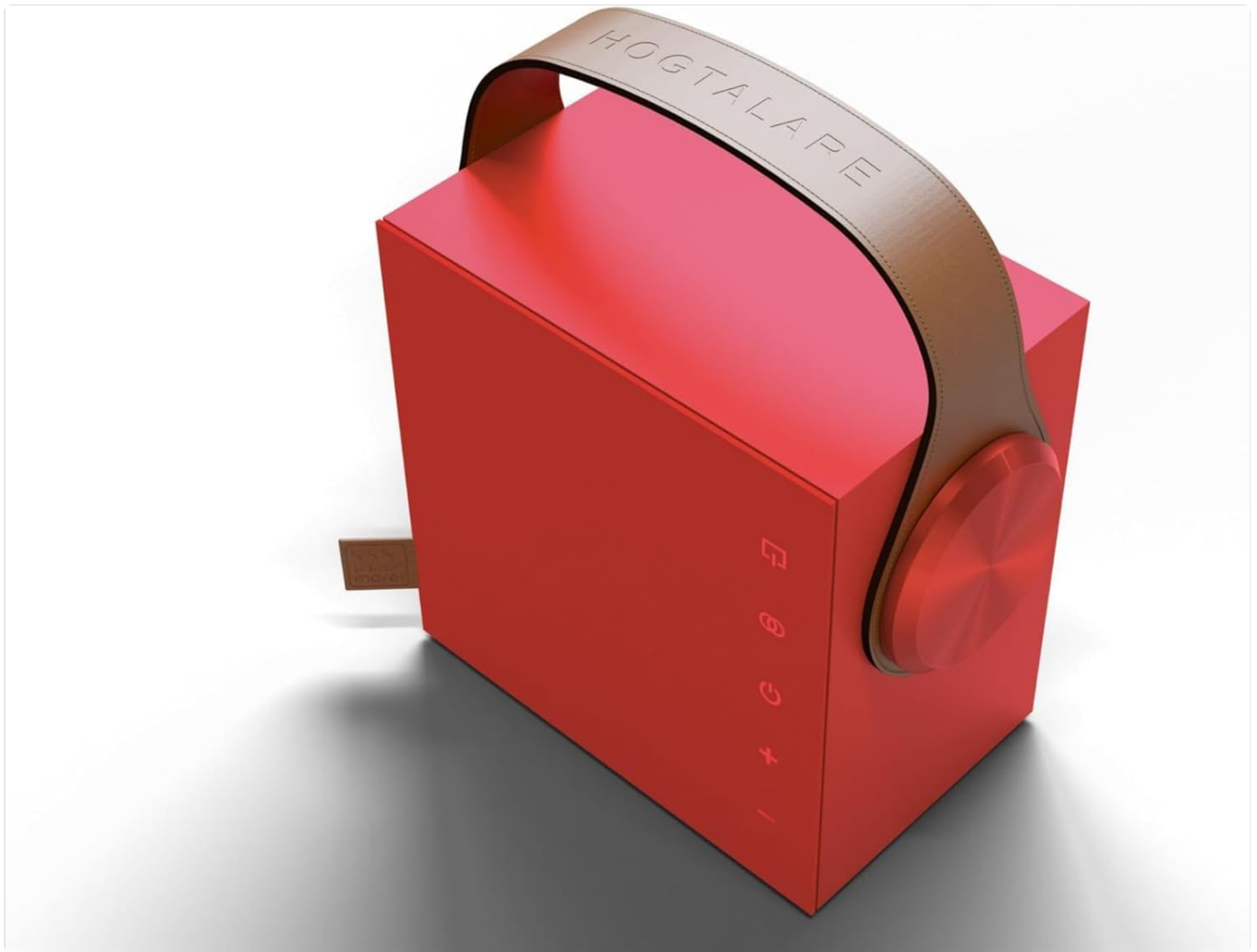


Figure 4.1: Detailed view of the Morel Biggie's touch control panel.

4.2 Audio Playback

Once connected via Bluetooth, audio from your paired device will automatically play through the Morel Biggie. Use the volume controls on the speaker or your device to adjust the sound level. The speaker's advanced DSP and dynamic EQ ensure optimal sound balance at all volume levels.

5. MAINTENANCE AND CARE

Proper care will ensure the longevity and performance of your Morel Biggie speaker.

- **Cleaning:** Use a soft, dry, lint-free cloth to clean the speaker's exterior. Do not use abrasive cleaners, alcohol, benzene, or other chemicals, as these may damage the surface.
- **Battery Care:** To maximize battery life, avoid fully discharging the speaker frequently. Recharge the battery regularly, even if not in use for extended periods. Store in a cool, dry place.
- **Environmental Conditions:** The Morel Biggie is designed for indoor use. While it can be used in sheltered outdoor areas, it is **not waterproof** and should be protected from rain, splashes, and extreme temperatures. Avoid direct sunlight exposure for prolonged periods.
- **Storage:** When storing the speaker for a long time, ensure it is fully charged and power it off.

6. TROUBLESHOOTING

If you encounter issues with your Morel Biggie speaker, please refer to the following common problems and solutions:

Problem	Possible Cause	Solution
Speaker does not power on.	Low battery; power button not held long enough.	Charge the speaker fully. Press and hold the power button for at least 3 seconds.
Cannot pair via Bluetooth.	Speaker not in pairing mode; device Bluetooth off; too far from speaker; interference.	Ensure speaker is in pairing mode (flashing light). Turn Bluetooth on your device. Move device closer to speaker. Turn off other Bluetooth devices nearby.
No sound or low volume.	Volume too low on speaker or device; speaker not connected; incorrect audio source.	Increase volume on both speaker and device. Verify Bluetooth connection. Ensure audio is playing from the correct source on your device.
Sound distortion.	Volume too high; audio source quality is poor.	Reduce volume. Try a different audio source or file. Allow for break-in period (up to 15 hours) for optimal sound.
TWS pairing fails.	Speakers already connected to another device; incorrect pairing sequence.	Ensure both speakers are disconnected from other devices. Follow the TWS pairing steps precisely.

If the problem persists after trying these solutions, please contact Morel customer support for further assistance.

7. SPECIFICATIONS

Feature	Detail
Model Name	Biggie
Item Model Number	RM
Brand	Morel
Speaker Type	Portable Bluetooth Speaker
Connectivity Technology	Bluetooth 5.3 BLE, Wireless
Wireless Range	Up to 50 meters (164 feet)
Audio Output Mode	Stereo (with TWS pairing)
Surround Sound Channel Configuration	2.0
Drivers	4-inch Woofer, 25mm Soft Dome Tweeter
Power Source	Battery Powered
Battery Life	Up to 20 hours (varies with volume and content)
Control Method	Touch
Product Dimensions (D x W x H)	7.5" x 5" x 7.5" (18cm x 18cm)
Item Weight	7.7 pounds

Feature	Detail
Color	Ruby Red (other colors available: Cosmic Black, Olive Green, Midnight Blue, Aqua Frost, Oak Wood, Golden Glow, Minimal White, Denim Sky)
Waterproof	No
Recommended Uses	Indoor/Outdoor (with caution for elements)
Compatible Devices	Laptop, Smartphone, Tablet, Television

8. WARRANTY AND SUPPORT

8.1 Limited Warranty


The Morel Biggie Portable Bluetooth Speaker comes with a limited warranty. Please refer to the warranty card included in your product packaging for specific terms and conditions, including coverage duration and limitations. Keep your proof of purchase for warranty claims.



8.2 Customer Support

For technical assistance, troubleshooting beyond this manual, or warranty inquiries, please contact Morel customer support. Visit the official Morel website for contact information and additional resources.

[Visit the Morel Store on Amazon](#) for more product information and support.

Related Documents

	<p>Morel Biggie Hogtalare User Manual</p> <p>Comprehensive user manual for the Morel Biggie Hogtalare wireless speaker, detailing installation, operation, safety guidelines, device layout, interface functions, technical specifications, and company information.</p>
	<p>Morel Högtalare Bluetooth Speaker Review: High-End Audio Meets Ikea Design</p> <p>A comprehensive review of the Morel Högtalare Bluetooth speaker, evaluating its high-end audio performance, Ikea-inspired design, connectivity options, and overall value.</p>

 The image shows the front cover of a user manual. It features a black background with a subtle pattern of small white dots. In the top left corner is the Morel logo, consisting of three stylized 'M' shapes. Below the logo, the text 'HOGTALARE WIRELESS STEREO SPEAKER' is printed in white, all-caps, sans-serif font. At the bottom of the cover is a photograph of the black, rectangular wireless speaker.	<p>Morel Högtalare Wireless Stereo Speaker User Manual</p> <p>Comprehensive user manual for the Morel Högtalare Wireless Stereo Speaker, covering safety instructions, setup, Bluetooth and TWS pairing, audio source selection, sound adjustment, grill removal, technical specifications, and troubleshooting. Learn how to operate and maintain your Högtalare speaker for optimal performance.</p>
 The image shows the front cover of a user manual, identical to the one above. It features a black background with a subtle pattern of small white dots. In the top left corner is the Morel logo, consisting of three stylized 'M' shapes. Below the logo, the text 'HOGTALARE WIRELESS STEREO SPEAKER' is printed in white, all-caps, sans-serif font. At the bottom of the cover is a photograph of the black, rectangular wireless speaker.	<p>Morel Hogtalare Wireless Stereo Speaker User Manual</p> <p>Comprehensive user manual for the Morel Hogtalare Wireless Stereo Speaker, covering safety, setup, operation, Bluetooth and TWS pairing, AUX input, WiFi dongle use, grill removal, technical specifications, and troubleshooting.</p>