

Manuals+

[Q & A](#) | [Deep Search](#) | [Upload](#)

manuals.plus /

> [HOSAYA](#) /

> [HOSAYA HU8 Portable 4G LTE WiFi Modem User Manual](#)

HOSAYA HU8

HOSAYA HU8 Portable 4G LTE WiFi Modem User Manual

Model: HU8

INTRODUCTION

The HOSAYA HU8 is a versatile 4G SIM card WiFi dongle designed for portable internet access. It functions as both a WiFi router, providing internet connectivity to up to 10 devices, and a USB modem when plugged into a Windows computer. This device supports high-speed 4G LTE networks and features a compact design for travel and on-the-go use.



Image: The HOSAYA HU8 Portable 4G LTE WiFi Modem, a compact black dongle.

PACKAGE CONTENTS

Verify that all items are present in your package:

- HOSAYA HU8 4G LTE Modem
- User Manual (this document)

Note: A SIM card is not included and must be purchased separately from a local operator.

SETUP INSTRUCTIONS

1. SIM Card Installation

The HOSAYA HU8 requires a Nano SIM card. Ensure your SIM card is the correct size before installation.



Image: Comparison of Standard, Micro, and Nano SIM card sizes. The HU8 uses a Nano SIM.

1. Remove the protective cap from the USB connector.
2. Locate the SIM card slot on the device.
3. **Push the Metal Clasp to the Left** to unlock the SIM card tray.
4. **Raise the Metal Clasp** gently.
5. **Insert your Nano SIM card** into the tray with the gold contacts facing down and the notched corner aligned correctly.
6. **Close the Metal Buckle** and **Push It to the Right** to secure the SIM card.

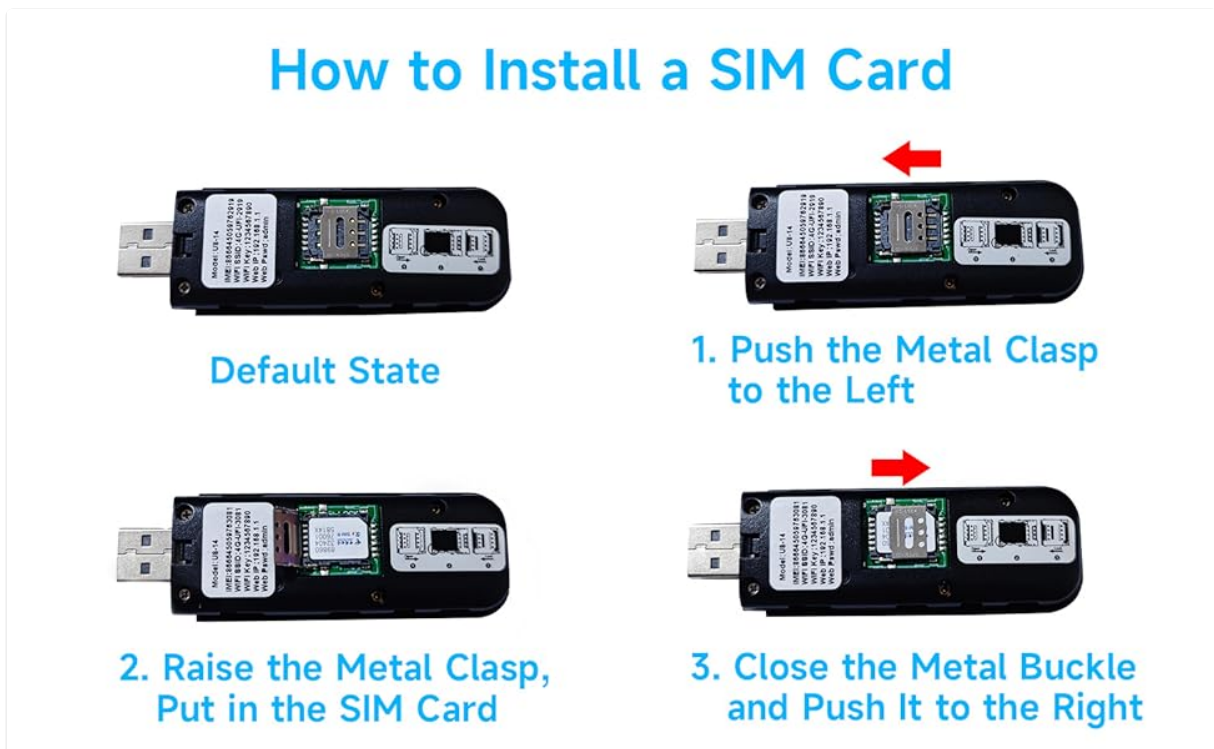


Image: Visual guide for installing the Nano SIM card into the HOSAYA HU8 modem.

2. Powering On and Initial Connection

The HU8 can be powered via any standard USB port (5V1A).

- **As a WiFi Router:** Plug the device into a USB power adapter, car USB port, or power bank. The device will automatically power on and broadcast a WiFi signal.
- **As a USB Modem:** Plug the device directly into a Windows computer's USB port.



Image: The HOSAYA HU8 being used in various power scenarios: car USB, PC USB, USB adapter, and power bank.

3. Driver Installation (for USB Modem mode)

When used as a USB modem with a Windows computer, the device typically installs drivers automatically (Plug & Play). Ensure your computer's antivirus software or firewall does not block the driver installation process.

4. APN Configuration

The router will automatically recognize most SIM cards and their Access Point Name (APN) settings. If internet access is not established, you may need to manually configure the APN settings via the device's web interface.

1. Connect to the device's WiFi network (SSID and password usually found on the device or packaging).
2. Open a web browser and navigate to the device's administration page (e.g., 192.168.1.1 or similar, check device documentation).
3. Log in using the default credentials (refer to device documentation for default username/password).
4. Navigate to the "Network Settings" or "APN Settings" section.
5. Enter the correct APN details provided by your mobile network operator.
6. Save the settings and restart the device if prompted.

OPERATING INSTRUCTIONS

1. Using as a WiFi Hotspot

Once powered on with a valid SIM card, the HU8 will broadcast a WiFi network.

1. Ensure the device is powered on. The WiFi Signal LED will indicate activity.
2. On your WiFi-enabled device (smartphone, tablet, laptop, etc.), search for available WiFi networks.
3. Select the network name (SSID) corresponding to your HOSAYA HU8.
4. Enter the WiFi password (WPA/WPA2 key) when prompted. This information is typically printed on the device itself or its packaging.
5. Up to 10 devices can connect simultaneously to the WiFi hotspot.

Support 10 WiFi users



Image: Illustration showing the HOSAYA HU8 providing WiFi connectivity to multiple devices, including smartphones, tablets, laptops, and smart home devices.

2. Using as a USB Modem

When connected to a Windows computer, the HU8 can function as a direct USB modem, providing internet access to that computer.

1. Plug the HOSAYA HU8 into an available USB port on your Windows computer.
2. Allow the necessary drivers to install automatically.
3. Once installed, the computer should detect the modem and establish an internet connection.

3. Web Interface Overview

The device features a web-based interface for advanced settings and monitoring.



Image: Screenshot of the HOSAYA HU8's web interface, showing various settings options like WiFi Settings, Login Settings, Profile Management, and Connection Mode.

Through the web interface, you can:

- Change WiFi SSID and password.
- Configure APN settings.
- View connection status and data usage.
- Manage connected devices.
- Access multi-language options.

MAINTENANCE

To ensure optimal performance and longevity of your HOSAYA HU8 modem:

- Keep the device clean and free from dust. Use a soft, dry cloth for cleaning.
- Avoid exposing the device to extreme temperatures, direct sunlight, or moisture.
- Do not attempt to disassemble or repair the device yourself. This may void the warranty.
- Ensure proper ventilation when in use, especially during extended periods, as the device may generate some heat.

TROUBLESHOOTING

No Internet Connection / SIM Card Not Working

- **Check SIM Card:** Ensure the Nano SIM card is correctly inserted and securely locked in its slot.
- **Valid SIM Card:** Confirm that your SIM card is active and supports data services. Some locked or contract SIM cards may not work with third-party routers. Try another universal SIM card if available.
- **APN Settings:** Verify the APN settings are correctly configured via the web interface. Refer to your mobile operator for the correct APN details.
- **Network Coverage:** Ensure you are in an area with 4G network coverage.
- **Device Restart:** Power off and then power on the device.

Frequent WiFi Drops or Poor Signal

- **Signal Strength:** Check the LTE signal LED indicator on the device. If the signal is weak, try moving the device to a location with better reception.
- **Interference:** Keep the device away from other electronic devices that might cause interference.
- **Antennas:** The device may have external antenna ports. If experiencing persistent poor signal,

consider connecting compatible external antennas (not included).

- **Overheating:** Ensure the device has adequate ventilation. Excessive heat can affect performance.

Cannot Log In to Web Interface / Boot Loop

- **Incorrect Credentials:** Double-check the username and password. If you changed the password and forgot it, a factory reset might be necessary.
- **SSID with Spaces:** Avoid using spaces in your WiFi network name (SSID) as this has been reported to cause boot loop issues. If this occurs, a factory reset may be required.
- **Factory Reset:** If you are locked out or the device is in a boot loop, locate the reset button (often a small pinhole) and press and hold it for 10-15 seconds while the device is powered on. This will restore default settings.

Device Not Detected as USB Modem

- **Antivirus/Firewall:** Temporarily disable your computer's antivirus software or firewall to allow driver installation. Re-enable after successful installation.
- **USB Port:** Try a different USB port on your computer.
- **Operating System:** Ensure your operating system is Windows, as the USB modem function is specified for Windows computers.

SPECIFICATIONS

Feature	Detail
Model Name	HU8
Brand	HOSAYA
Connectivity Technology	LTE, USB, Wi-Fi
Wireless Communication Standard	802.11b, 802.11g, 802.11n
Frequency Band Class	Single-Band
Supported Networks (American Version)	4G LTE: B2/B3/B4/B5/B7/B12/B13/B17; 3G: B2/B5
Max WiFi Users	10
SIM Card Type	Nano SIM
Power Input	5V1A USB power
Device Dimensions	87mm x 28mm x 12mm (approx. 3.43 x 1.10 x 0.47 inches)
Item Weight	0.988 ounces
Special Features	Internet Security, LED Indicator
Compatible Devices	Gaming Console, Security Camera, Smartphone, Tablet



Image: Diagram showing the dimensions (88mm x 28mm x 12mm) and key features of the HOSAYA HU8, including the USB interface, Micro SIM slot, and external antenna ports.

WARRANTY AND SUPPORT

For warranty information or technical support, please contact HOSAYA customer service through the retailer where the product was purchased or refer to the official HOSAYA website for contact details.