



[Manuals.plus](#) /

> [Adviace](#) /

> Adviace Blower Fan Instruction Manual for Dayton 1TDT2, 4C667, 1TDT2A, 4C445, 4YJ32, and Rotom R7-RB445 Replacements

## Adviace 1TDT2

# Adviace Blower Fan Instruction Manual

For Dayton 1TDT2, 4C667, 1TDT2A, 4C445, 4YJ32, and Rotom R7-RB445 Replacements

## 1. INTRODUCTION

---

This manual provides essential information for the safe and effective installation, operation, and maintenance of your Adviace replacement blower fan. Please read these instructions thoroughly before proceeding with installation or use. Retain this manual for future reference.



Image 1.1: Main view of the Advice Blower Fan. This image displays the overall design and components of the blower unit.

## 2. SAFETY INFORMATION

---

Always observe the following safety precautions to reduce the risk of fire, electric shock, or injury:

- **Disconnect Power:** Ensure the power supply to the appliance is disconnected before installing, servicing, or cleaning the blower fan.
- **Qualified Personnel:** Installation and servicing should be performed by qualified personnel.
- **Proper Grounding:** Ensure the blower is properly grounded according to local electrical codes.
- **Inspect for Damage:** Before installation, inspect the blower for any shipping damage. Do not install damaged units.
- **Ventilation:** Ensure adequate ventilation around the blower and the appliance it serves.
- **UL Approved:** This blower is UL approved to assure safe operation and long life.

## 3. TECHNICAL SPECIFICATIONS

---

The Advice Blower Fan is designed with the following technical parameters:

- **Voltage:** 115V

- **Frequency:** 60Hz
- **Amperage:** 2.2A
- **RPM:** 1430
- **Outlet Flange Dimension:** 6 inches x 5 inches
- **Item Weight:** Approximately 12 Pounds

## Quiet Replacement Fan

The old fan became vibrating and creaking. Once a new fan is installed, it will be very quiet and you may not even know it is running.



Image 3.1: Detailed technical specifications and key dimensions of the blower fan, including voltage, frequency, amperage, RPM, and outlet flange measurements.

## 4. COMPATIBILITY

This Adviece blower fan is a direct replacement for the following part numbers:

- Dayton 1TDT2
- Dayton 4C667
- Dayton 1TDT2A
- Dayton 4C445
- Dayton 4YJ32
- Rotom R7-RB445
- Other compatible part numbers: 70086133, 7008-6133

It is suitable for use in various heating appliances such as Pellet Stoves, Wood Stoves, Furnaces,

and Fireplaces, including models like the 521 Daka wood furnace.

## Replaces Part Number

1TDT2

4C667

1TDT2A

4C445

4YJ32

70086133

7008-6133

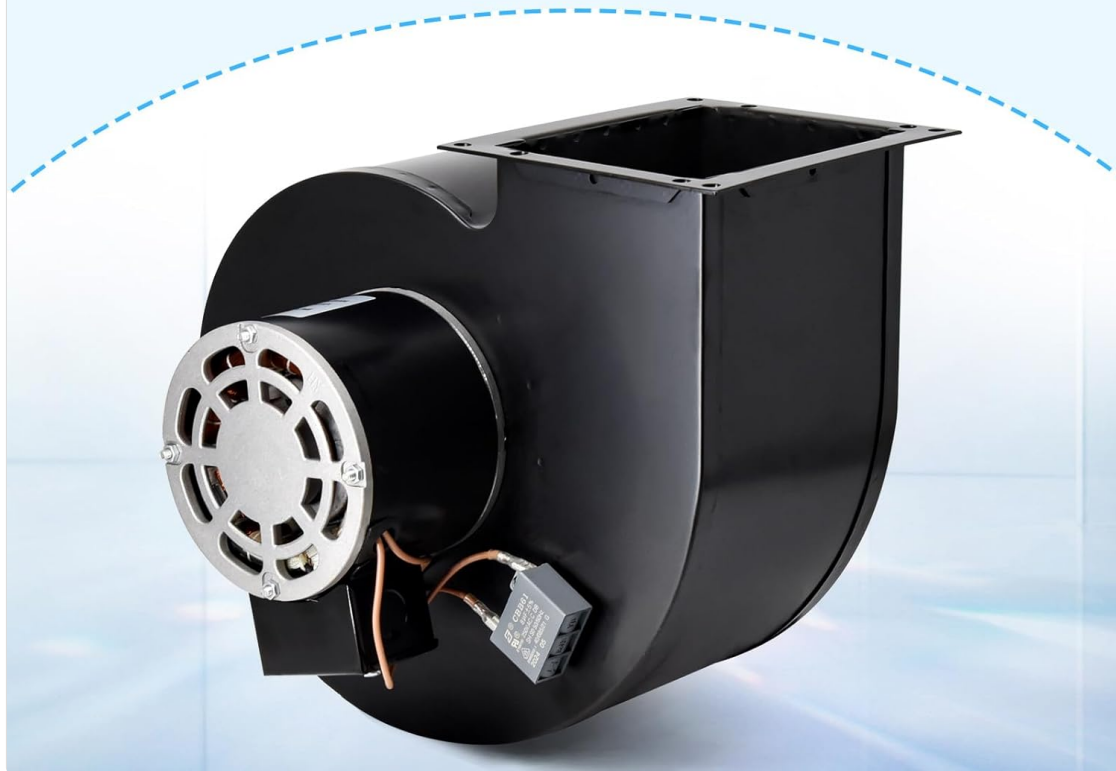


Image 4.1: Visual representation of the part numbers this Adviece blower fan replaces, including Dayton 1TDT2, 4C667, 1TDT2A, 4C445, 4YJ32, 70086133, and 7008-6133.

## 5. INSTALLATION AND SETUP

Follow these general steps for installing the blower fan. Specific procedures may vary depending on your appliance model. Always refer to your appliance's original service manual for detailed instructions.

1. **Power Disconnection:** Turn off and disconnect all power to the appliance where the blower will be installed.
2. **Access Old Blower:** Carefully access the existing blower fan within your appliance. This may involve removing panels or covers.
3. **Remove Old Blower:** Disconnect the wiring from the old blower and unmount it from its position. Note the orientation and wiring connections for reference.
4. **Mount New Blower:** Position the Adviece blower fan in the same location and orientation as the old unit. Secure it using the appropriate mounting hardware.
5. **Connect Wiring:** Connect the electrical wiring to the new blower fan. Ensure all connections are secure and match the original configuration. Refer to the connection diagram on the blower motor if available.
6. **Secure Panels:** Reinstall any removed panels or covers.

7. **Test Operation:** Restore power to the appliance and test the blower fan's operation. Listen for smooth and quiet running.

## 6. OPERATION

Once installed, the Adviace blower fan operates automatically in conjunction with your appliance's control system. It is designed to move a sufficient amount of air efficiently and quietly.

### Technical Specifications

115 Volts

60 Hz

2.2 Amps

1430 RPM



Image 6.1: Illustration showing the Adviace Blower Fan effectively moving air, highlighting its airflow capability. The blower is engineered for superb balance, energy efficiency, and durability, ensuring reliable performance.

# Nicely Made Blower Fan



Superbly Balanced



Energy Efficient



Durable



Image 6.2: Graphic illustrating the key features of the Advicce Blower Fan: superbly balanced, energy efficient, and durable construction.

Its design aims to provide a quiet replacement, significantly reducing noise compared to older, vibrating units.

# Moves Pretty Good Amount of Air



Image 6.3: Comparison showing the quiet operation of the Adviace Blower Fan versus a noisy, old fan, emphasizing its low-noise performance.

## 7. MAINTENANCE

---

Regular maintenance helps ensure the longevity and optimal performance of your blower fan:

- **Annual Inspection:** Inspect the blower fan annually for any signs of wear, damage, or accumulation of dust and debris.
- **Cleaning:** With power disconnected, carefully clean the fan blades and housing using a soft brush or vacuum cleaner to remove dust and lint. Avoid using liquids directly on electrical components.
- **Check Connections:** Periodically check electrical connections to ensure they remain tight and free from corrosion.
- **Lubrication:** This blower fan typically features sealed bearings that do not require lubrication. Do not attempt to lubricate the motor unless specifically instructed by the manufacturer.

## 8. TROUBLESHOOTING

---

If you encounter issues with your Adviace blower fan, consult the following table for common problems and solutions:

Problem	Possible Cause	Solution
Blower does not start	No power, loose wiring, faulty motor	Check power supply and circuit breaker. Inspect wiring connections. If motor is faulty, contact support.
Excessive noise or vibration	Debris in fan, loose mounting, worn bearings	Disconnect power and clean fan blades. Tighten mounting bolts. If bearings are worn, contact support.
Low airflow	Blocked intake/exhaust, dirty fan blades	Clear any obstructions. Clean fan blades and housing.

If the problem persists after attempting these solutions, please contact Adviace customer support.

## 9. WARRANTY AND SUPPORT

The Adviace blower fan comes with a **1-year warranty** from the date of purchase, covering defects in materials and workmanship. This warranty ensures safe operation and long life for your product.

For warranty claims, technical assistance, or any questions regarding your Adviace blower fan, please contact our customer support. When contacting support, please have your purchase information and the product model number ready.

**Manufacturer:** Adviace

**ASIN:** B0DGPZ9WF5

**Date First Available:** September 11, 2024

For further assistance, you may visit the [Adviace Store on Amazon](#).