



[Manuals.plus](#) /

> [MELCAM](#) /

> MELCAM 10-Inch WiFi Digital Photo Frame User Manual

## MELCAM P105

# MELCAM 10-Inch WiFi Digital Photo Frame User Manual

Model: P105

## INTRODUCTION

---

This user manual provides comprehensive instructions for setting up, operating, and maintaining your MELCAM 10-Inch WiFi Digital Photo Frame. Please read this manual carefully before using the device to ensure optimal performance and longevity.

## PRODUCT OVERVIEW

---

The MELCAM 10-Inch WiFi Digital Photo Frame is designed to display your cherished memories with a vibrant HD IPS touchscreen. It features 16GB of internal storage, expandable memory, and real-time photo sharing capabilities via a dedicated mobile application. The frame supports auto-rotate, slideshows, and allows for captions and background music to enhance your viewing experience.



Figure 1: MELCAM 10-Inch WiFi Digital Photo Frame and companion app.

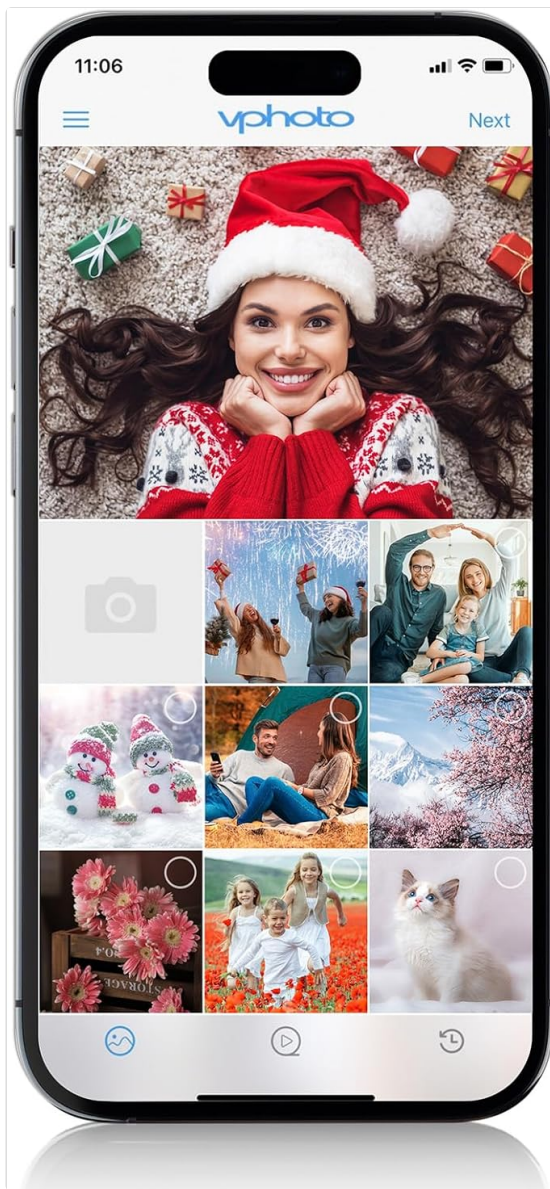
## SETUP GUIDE

### Initial Setup

1. **Power On:** Connect the power adapter to the frame and a power outlet. The frame will automatically power on.
2. **Connect to WiFi:** Follow the on-screen prompts to connect your frame to a stable 2.4GHz Wi-Fi network.
3. **Pair Your Device:** Download the official Vphoto app from your smartphone's app store.

### Downloading the Vphoto App

The Vphoto app is essential for managing your digital photo frame and sharing photos remotely. It is available for both Android and iOS devices.



## Start Your Vphoto Journey

- 3 Second Setup
- 2 Binding Methods
- 1 Second Activation
- 0 Private Data Associations
- 0 Subscription & Membership Fees



Figure 2: Vphoto App download options.

- For Android devices: [Get it on Google Play](#)
- For iOS devices: [Available on the App Store](#)

Once installed, open the app and follow the instructions to pair it with your digital photo frame. This typically involves scanning a QR code displayed on the frame or entering a unique device ID.

## OPERATING INSTRUCTIONS

### Navigating the Touchscreen Interface

The MELCAM digital photo frame features an intuitive HD IPS touchscreen. Swipe left or right to navigate through photos and videos. Tap on icons to access various functions such as settings, music, and video playback.

# A Frame That Brings More



Figure 3: Main interface of the digital photo frame.

## Photo and Video Management

- **Uploading Content:** Use the Vphoto app to upload photos and videos directly from your smartphone to the frame.
- **Slideshows:** The frame automatically plays a slideshow of uploaded content. You can customize slideshow speed and transition effects in the settings.
- **Auto-Rotate:** The display automatically adjusts its orientation (landscape or portrait) based on how the frame is positioned.
- **Captions and Music:** Add descriptions to your photos and enhance your memories with background music through the Vphoto app.

## Multi-User Management

The frame supports multi-user management, allowing family and friends to share photos directly to your frame. Sub-users can be invited via QR code or email, and their permissions can be customized.



Figure 4: Multi-user sharing options.

## Memory Expansion

The frame comes with 16GB of internal storage. For additional storage, you can insert an SD card or USB drive (up to 128GB, Class 10 or U1 required) into the designated slots. This allows for easy organization and display of a larger photo collection.

## MAINTENANCE

### Cleaning the Screen

To clean the touchscreen, gently wipe it with a soft, lint-free cloth. For stubborn smudges, slightly dampen the cloth with water or a screen-safe cleaning solution. Avoid using harsh chemicals or abrasive materials.

### Software Updates

Periodically check for software updates through the frame's settings menu to ensure optimal performance and access to new features. Connect the frame to a stable Wi-Fi network before initiating any updates.

## TROUBLESHOOTING

## Common Issues and Solutions

- **Frame not powering on:** Ensure the power adapter is securely connected to both the frame and a working power outlet.
- **Cannot connect to Wi-Fi:** Verify your Wi-Fi password and ensure the frame is within range of a 2.4GHz network. Restarting both the frame and your router may resolve the issue.
- **Photos not appearing:** Confirm that photos have been successfully uploaded via the Vphoto app or transferred correctly to an SD card/USB drive. Check the frame's storage settings.
- **Screen unresponsive:** Try restarting the frame. If the issue persists, perform a factory reset (refer to settings for this option, note that this will erase all data).

For further assistance, please refer to the Warranty and Support section.

## SPECIFICATIONS

Feature	Detail
Product Dimensions	11.2 x 8 x 0.99 inches
Item Weight	2.07 pounds
Model Number	P105
Resolution	1080p
Screen Size	10 Inches
Internal Storage	16GB
Expandable Memory	Up to 128GB (SD card or USB drive, Class 10 or U1 required)
Connectivity Technology	USB, Wi-Fi
Compatible Devices	Smartphone
Manufacturer	MELCAM

## WARRANTY AND SUPPORT

Your MELCAM Digital Photo Frame comes with a **2-year warranty**. For any questions, technical assistance, or warranty claims, please contact our customer support team.

**Customer Support:** Available 24/7.

Please retain your proof of purchase for warranty purposes.