

FOXWELL NT630 Plus / NT630 Pro

FOXWELL NT630 Plus / NT630 Pro OBD2 Scanner User Manual

Model: NT630 Plus / NT630 Pro

Brand: FOXWELL

INTRODUCTION

This user manual provides comprehensive instructions for the operation and maintenance of your FOXWELL NT630 Plus and NT630 Pro OBD2 Scanners. These devices are designed to assist in diagnosing vehicle issues related to the Anti-lock Braking System (ABS), Supplemental Restraint System (SRS), and general On-Board Diagnostics (OBD2) systems, as well as performing battery health tests. The NT630 Plus focuses on ABS and SRS diagnostics, while the NT630 Pro combines these with advanced battery testing capabilities. Please read this manual thoroughly before operating the device to ensure proper usage and to maximize its diagnostic potential.



Image: The FOXWELL NT630 Plus (left) and NT630 Pro (right) diagnostic tools. The NT630 Pro includes battery clamps for testing.

UPGRADE 2 IN 1 CAR DIAGNOSTIC TOOL

Cost-effective option



NT630 Plus



12V Battery Test

Image: The FOXWELL NT630 Pro, highlighting its capability as a 2-in-1 diagnostic tool for both vehicle systems and battery health.

SETUP

Package Contents

Before beginning, ensure all components are present:

- FOXWELL NT630 Plus / NT630 Pro Main Unit
- OBD2 Diagnostic Cable
- USB Cable (for updates)
- User Manual (this document)
- For NT630 Pro: Battery Test Clamps

Initial Power On

The device powers on automatically when connected to a vehicle's OBD2 port. Alternatively, it can be

powered via the USB cable connected to a computer for software updates.

Connecting to Vehicle

1. Locate the vehicle's 16-pin Data Link Connector (DLC), usually under the dashboard on the driver's side.
2. Turn the vehicle's ignition to the **ON** position (engine off).
3. Connect the OBD2 diagnostic cable to the vehicle's DLC and to the scanner's port.
4. The scanner will power on and display the main menu.

OPERATING INSTRUCTIONS

Navigation

The scanner features a clear display and intuitive button layout:

- **Up/Down Arrows:** Navigate through menu options.
- **Left/Right Arrows:** Move cursor, change values, or navigate sub-menus.
- **ENTER Button:** Confirm selection or enter a function.
- **BACK Button:** Return to the previous screen or exit a function.
- **HELP Button:** Access context-sensitive help information.
- **F1, F2, F3 Buttons:** Function keys, their purpose changes based on the current screen, indicated on the display.

MORE THAN A ENTRY LEVEL



Image: Close-up of the FOXWELL NT630 Plus screen and control buttons, illustrating the user interface for navigation and function selection.

ABS and SRS Diagnostics

The NT630 Plus and NT630 Pro are capable of reading and clearing diagnostic trouble codes (DTCs) from the Anti-lock Braking System (ABS) and Supplemental Restraint System (SRS) modules. They also provide live data streams for these systems.

1. From the main menu, select **ABS & Airbag**.
2. Choose the vehicle make and model.
3. Select **Read Codes** to view current or pending DTCs.
4. Select **Clear Codes** to erase DTCs after repairs are made.
5. Select **Live Data** to view real-time sensor information.

ALL FUNCTIONS FOR ABS SRS

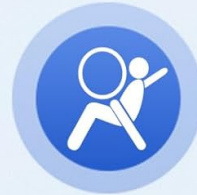
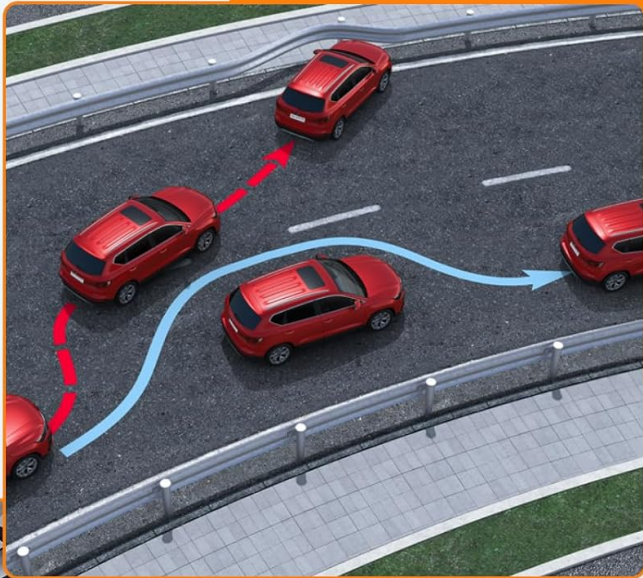


Image: Visual representation of the scanner's capability to diagnose ABS, SRS, and OBD2 systems, highlighting its comprehensive diagnostic functions.



ABS SYSTEM

- Ensures the system is functioning correctly
- Enhancing overall safety and stability



AIRBAG SYSTEM

- Ensure the airbag system is work properly
- Ensure your safety on the road

Image: Diagrams explaining the function of the ABS (Anti-lock Braking System) and Airbag (Supplemental Restraint System) in a vehicle, emphasizing their role in safety.

OBD2 Functions

Both models support full OBD2 diagnostic functions for engine-related issues.

- **Read Codes:** Displays generic and manufacturer-specific DTCs.
- **Clear Codes:** Erases DTCs and turns off the Check Engine Light (MIL).
- **I/M Readiness:** Checks the readiness of emission-related monitors.
- **Live Data:** Displays real-time data from various engine sensors.
- **Freeze Frame Data:** Shows engine conditions at the time a DTC was set.
- **O2 Sensor Test:** Retrieves O2 sensor monitor test results.
- **On-Board Monitor Test:** Retrieves results for emission-related powertrain components.
- **Component Test:** Allows testing of specific components.
- **Vehicle Information:** Retrieves VIN, Cal ID, CVN.

Special Functions (NT630 Plus & Pro)

These scanners offer several advanced service functions:

- **ABS Bleeding:** Performs automated bleeding procedures for the ABS module on supported vehicles to remove air from the brake lines. *Note: This function is vehicle-specific and not all vehicles support auto bleed.*

#1 ABS BLEEDING SCAN TOOL

To keep a safety driving, removing the air from the brake pad is important.

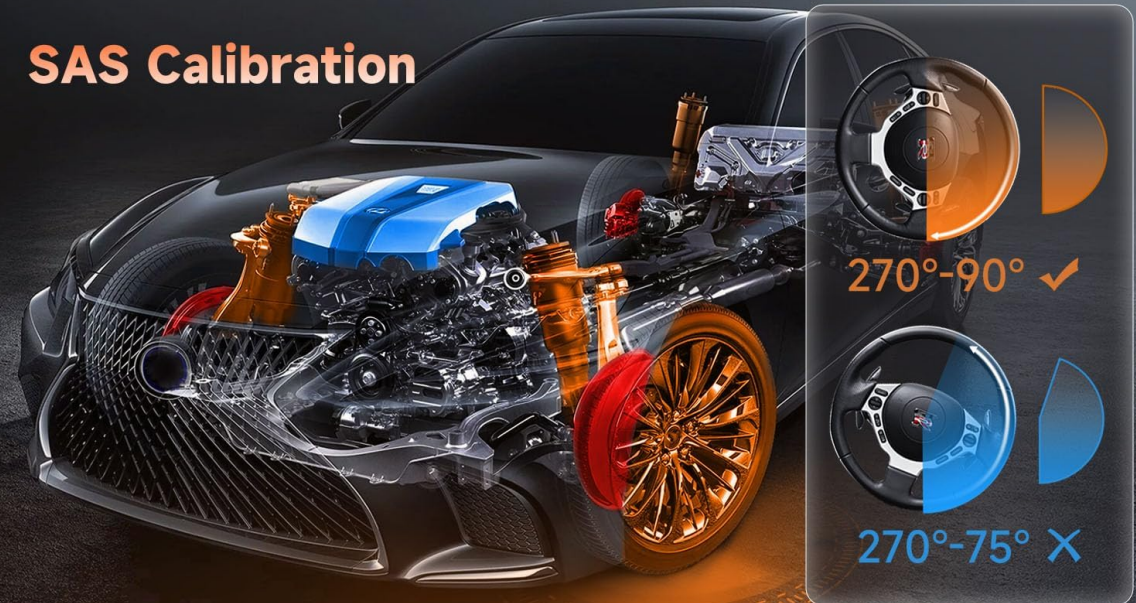


Image: An infographic detailing the ABS bleeding process, showing how air is removed from the brake system to restore proper brake pedal feel.

- **Oil Reset:** Resets the oil service light and calculates the optimal oil life change interval.
- **EPB Reset:** Resets the Electronic Parking Brake (EPB) system after brake pad replacement.
- **SAS Calibration:** Calibrates the Steering Angle Sensor (SAS) after steering system repairs or alignment.

NOT ONLY ERROR CODE ERASE

SAS Calibration



Note: Some classic vehicle without the electronic control system can not support the reset service.



Oil/Service Light Reset



EPB Reset

Image: Visuals demonstrating the SAS (Steering Angle Sensor) calibration, Oil/Service Light Reset, and EPB (Electronic Parking Brake) Reset functions available on the scanner.

Battery Test Functions (NT630 Pro Only)

The NT630 Pro includes comprehensive 12V battery testing capabilities. Connect the battery clamps to the vehicle battery terminals (red to positive, black to negative).

- **Battery Test:** Analyzes the battery's State of Health (SOH), State of Charge (SOC), voltage, and internal resistance.
- **Cranking Test:** Measures the actual cranking voltage and cranking time to determine the battery's cranking ability.
- **Charging Test:** Checks the vehicle's charging system, including generator output and rectifier diode.

MULTIPLE BATTERY TEST FUNCTIONS

12V 100-2000CCA

BATTERY TEST	
RESULT	REPLACE BATTERY
VOLTS	12.31V
MEASURED	18CCA
SOH	4%
RES.	100.0MΩ
RATING	500CCA
SOC	44%
PRESS [ENTER] TO CONTINUE	

CRANKING TEST	
RESULT	CRANKING SKIPPED
VOLTS	10.47V
TIME	4.00S
PRESS [ENTER] TO CONTINUE	

CHARGING TEST	
RESULT	NO PROBLEMS
NO LOAD	14.23V
LOADED	13.28V
RIPPLE PEAK	0.32mV
PRESS [ENTER] TO CONTINUE	

BATTERY STATUS TEST



State of Charge



State of Health



Voltage Test



Battery Test



Cranking Test



Charging Test



Resistance Test



Alternater Voltage



CCA Value Test



Image: Screenshots of the NT630 Pro displaying results for Battery Test, Cranking Test, and Charging Test, along with icons for various battery status checks.

WIDER APPLICATION FOR BATTERY TESTING

Battery Type

- AGM Flat Plate
- AGM Spiral
- Regular Flooded
- EFB
- GEL

Models Supported



Light truck



Boat



Golf Car



Car



Motorcycle



ATV

UPGRADED CLAMP

- 99.9% Accuracy & More Safe

99.9%



Image: An illustration detailing the various battery types supported (AGM, Gel, Flooded) and the wide range of vehicles (cars, trucks, boats, motorcycles) that can be tested with the NT630 Pro's battery function.

MAINTENANCE

Software Updates

Regular software updates are crucial for maintaining compatibility with new vehicle models and for accessing new features. Updates are performed via a computer using the provided USB cable and FOXWELL's update software.

1. Visit the official FOXWELL website to download the latest update tool and firmware.
2. Install the update tool on your computer.
3. Connect the scanner to your computer using the USB cable.
4. Follow the on-screen instructions in the update tool to download and install the firmware.

Cleaning and Storage

- Clean the scanner's screen and casing with a soft, damp cloth. Do not use abrasive cleaners or solvents.
- Keep the device dry and away from extreme temperatures.

- Store the scanner and its accessories in the provided case to prevent damage.

TROUBLESHOOTING

Problem	Possible Cause	Solution
Scanner does not power on.	Loose connection; Vehicle ignition off; Blown fuse in vehicle's OBD2 port.	Ensure cable is securely connected. Turn ignition to ON. Check vehicle's fuse box for a blown fuse related to the OBD2 port.
"Link Error" or "Communication Error" message.	Incorrect protocol; Faulty cable; Vehicle not OBD2 compliant; Damaged DLC.	Verify vehicle is OBD2 compliant (1996 and newer for US). Check cable for damage. Try on another vehicle if possible.
Cannot perform ABS Bleeding/Special Function.	Vehicle not supported; Incorrect procedure.	Check FOXWELL's official website for vehicle compatibility list. Ensure all steps in the procedure are followed correctly.
Battery test results are inconsistent (NT630 Pro).	Loose clamps; Dirty battery terminals; Battery not fully charged.	Ensure clamps are securely attached. Clean battery terminals. Charge battery fully before testing.

SPECIFICATIONS

Feature	Detail
Display	Color LCD
Connectivity	OBD2 16-pin, USB
Operating Voltage	8-18V (Vehicle power)
Operating Temperature	0 to 60°C (32 to 140°F)
-20 to 70°C (-4 to 158°F)	Storage Temperature
Dimensions	(Approximate, specific dimensions not provided in input) Compact handheld design
Weight	(Approximate, specific weight not provided in input) Lightweight
Supported Protocols	ISO9141-2, ISO14230-4, KWP2000, J1850 VPW, J1850 PWM, CAN, ISO15765
Battery Test Range (NT630 Pro)	12V batteries, 100-2000 CCA

For further assistance, please visit the official FOXWELL website or contact customer support.