

Manuals+

[Q & A](#) | [Deep Search](#) | [Upload](#)

Manuals.plus /

- › [Devoko](#) /
- › Devoko Dressing Table with LED Mirror Instruction Manual

Devoko MW-0513

Devoko Dressing Table with LED Mirror

Model: MW-0513

INTRODUCTION

The Devoko Dressing Table is designed to provide a functional and stylish solution for your beauty and storage needs. Featuring a large LED mirror with adjustable brightness and color temperature, ample storage with seven drawers and open shelves, and a durable construction, this vanity is a versatile addition to any bedroom.



Figure 1: Overview of the Devoko Dressing Table, showcasing its design and storage capabilities.

SAFETY INFORMATION

Please read all safety instructions carefully before assembly and use. Failure to follow these instructions may result in injury or damage to the product.

- **Anti-Tipping Device:** This dressing table is equipped with an anti-tipping device. It is crucial to secure the vanity to the wall using the provided hardware to prevent accidental tipping, especially in households with children or pets.
- Ensure all screws and fasteners are tightened securely during assembly. Periodically check and re-tighten as necessary.

- Do not overload drawers or shelves. Distribute weight evenly.
- Keep electrical components (LED mirror) away from water and moisture.



Preventing tables from tipping over

Figure 2: Illustration of the anti-tipping mechanism, emphasizing the importance of securing the unit to the wall.

SPECIFICATIONS

Brand	Devoko
Model	MW-0513
Color	White
Material	Engineered Wood (CE certified E1 grade particle board)
Finish	Melamine

Product Dimensions (L x W x H)	108 cm x 40 cm x 139 cm (42.5 x 15.7 x 54.7 inches)
Item Weight	44.9 Kilograms (99 lbs)
Assembly Required	Yes
Mirror Type	LED Illuminated Mirror
LED Features	3 Color Temperatures (6000K Cold, 4000K Natural, 3000K Warm), Adjustable Brightness
Storage	7 Drawers (1 large, 6 medium), 4 Open Shelves

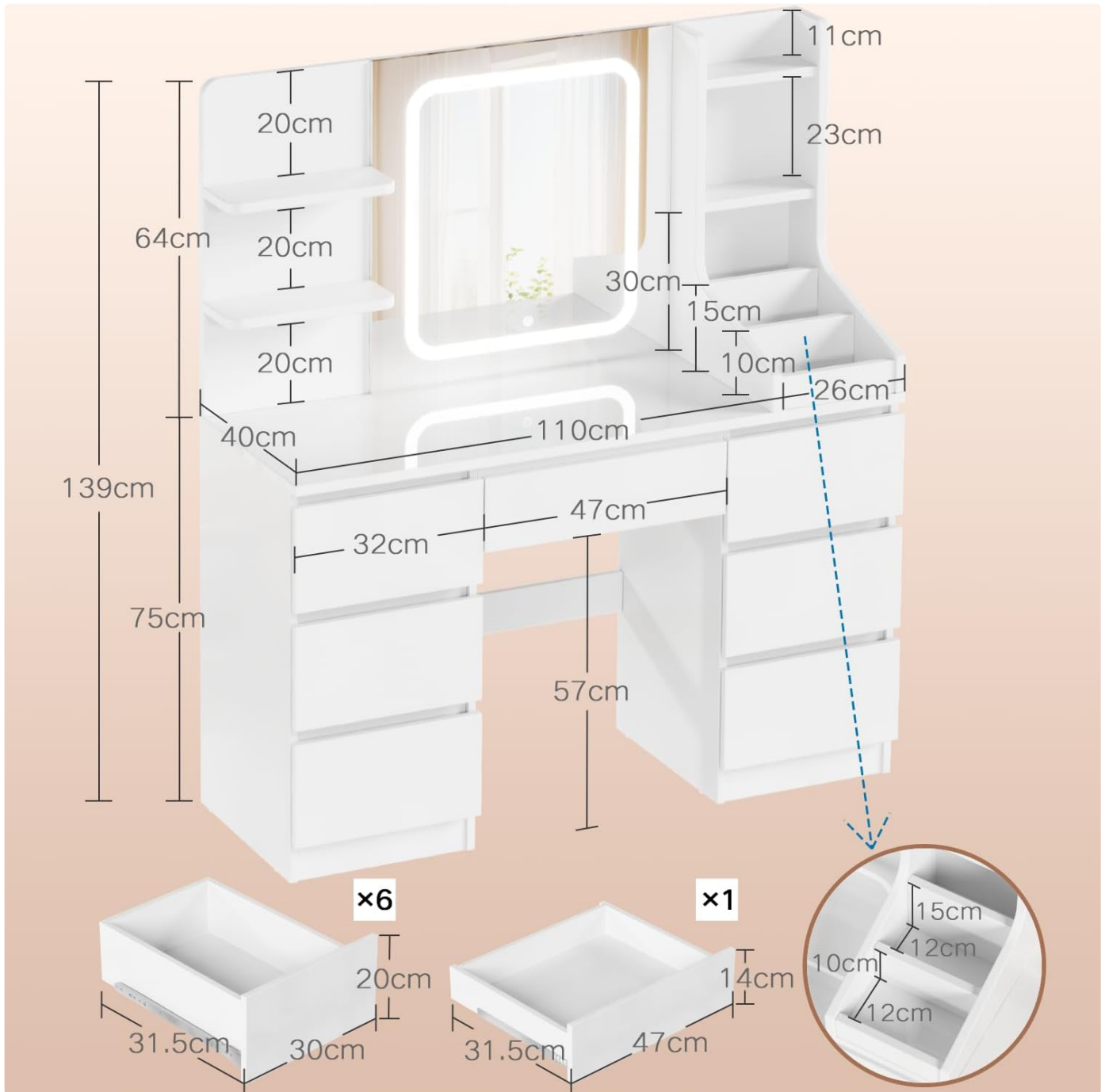


Figure 3: Dimensional diagram of the dressing table, including drawer sizes and overall height/width.

SETUP AND ASSEMBLY

The Devoko Dressing Table requires assembly. It is shipped in two separate packages, which may arrive at different times. Please ensure you have received all components before beginning assembly.

Package Contents:

Verify that all parts and hardware listed in the assembly manual are present. The product includes all necessary accessories with numbered, clear assembly instructions.

Assembly Steps:

1. Unpack all components and lay them out on a clean, soft surface to prevent scratches.
2. Refer to the included assembly manual for step-by-step instructions. Each part is typically numbered for easy identification.
3. Assemble the main frame of the dressing table first, ensuring all connections are secure.
4. Install the drawers and their slides according to the instructions. The table features smooth metal drawer slides for easy operation.
5. Attach the mirror unit and side shelves.
6. **Important:** Once the table is assembled and in its final position, install the anti-tipping device by securing the table to the wall. This is a critical safety step.

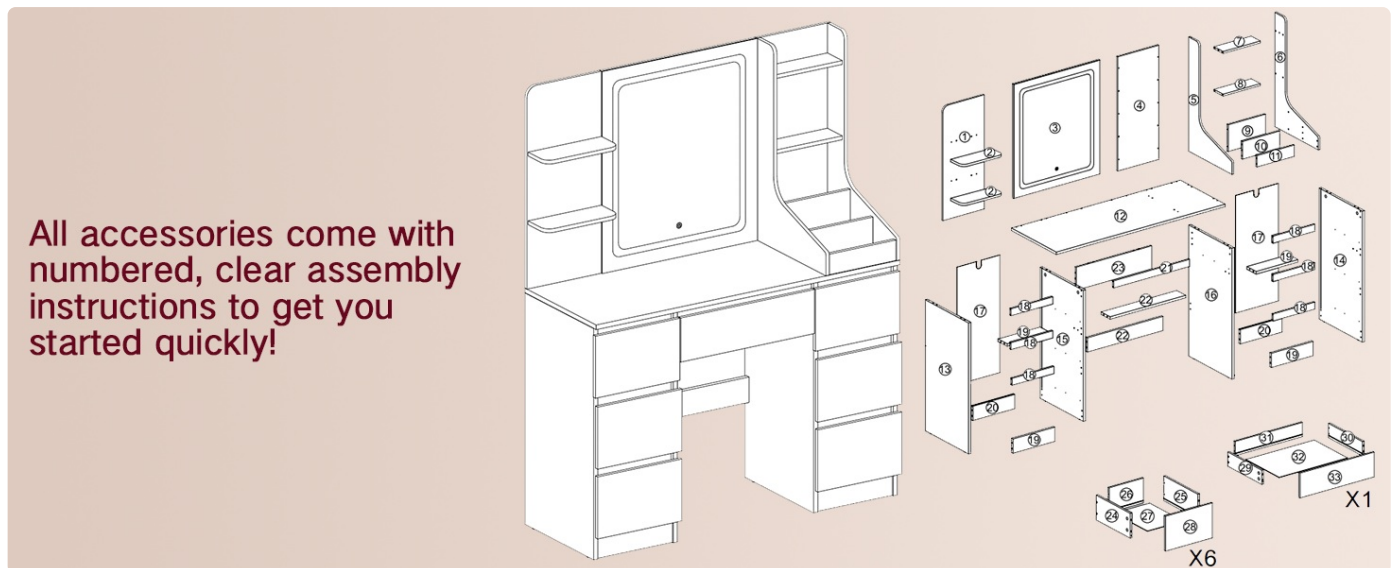


Figure 4: Exploded view of the dressing table components, illustrating the assembly process with numbered parts.

OPERATING INSTRUCTIONS

LED Mirror Operation:

The integrated LED mirror offers adjustable lighting to suit your needs.

- **Power On/Off and Color Temperature Adjustment:** Lightly touch the touch switch on the mirror to turn the lights on or off and to cycle through the three color temperatures: Cold Light (6000K), Natural Light (4000K), and Warm Light (3000K).
- **Brightness Adjustment:** Press and hold the touch switch to continuously adjust the brightness level. Release when the desired brightness is achieved.

Adjustable LED Lighting

3 Colours + Different Brightness

6000K

Cold Light



4000K

Natural Light



3000K

Warm Light



Touch Switch

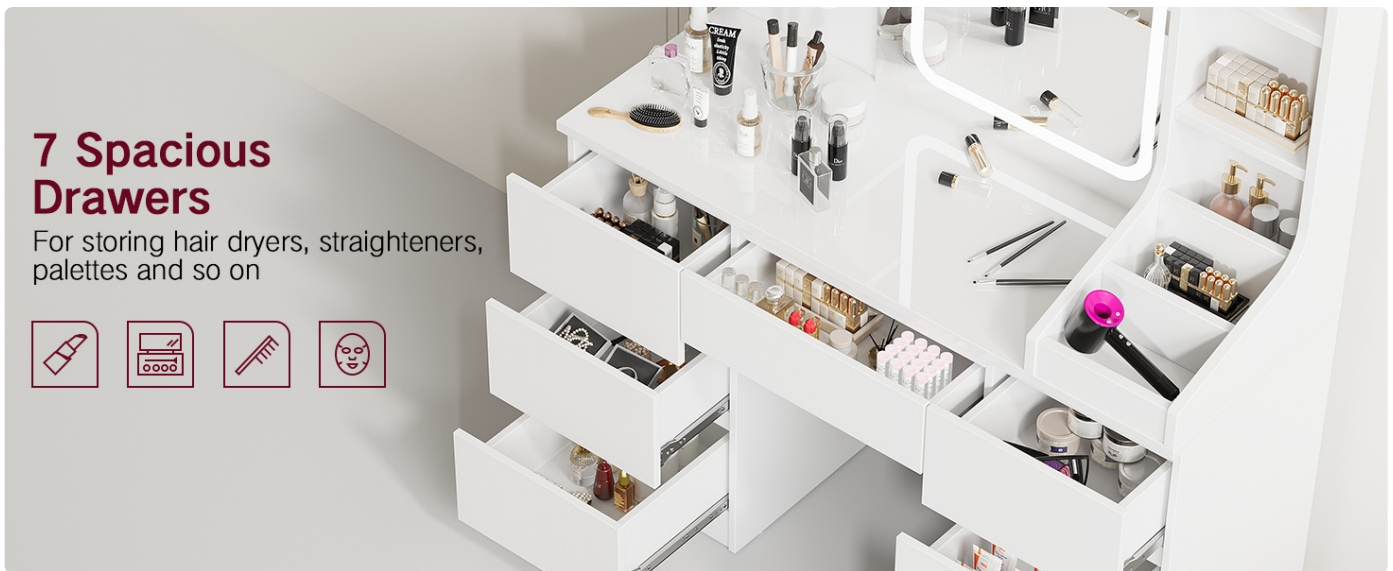
- Short Press to Adjust the Light Colour
- Long Press to Adjust the Brightness of the Light

Figure 5: Visual guide to the LED mirror's adjustable lighting features, including color temperature and brightness control via the touch switch.

Storage Utilization:

The dressing table provides extensive storage options for organizing your beauty products and accessories.

- **Drawers:** Utilize the seven spacious drawers (one large, six medium) for storing various items such as makeup palettes, hair dryers, straighteners, and other personal care products. The drawers are designed for smooth opening and closing.
- **Open Shelves:** The four open shelves provide easy access and display space for frequently used items, perfumes, or decorative elements.



7 Spacious Drawers

For storing hair dryers, straighteners, palettes and so on



Figure 6: Illustration of the seven spacious drawers, highlighting their capacity for various beauty items.

MAINTENANCE

Proper maintenance will ensure the longevity and appearance of your Devoko Dressing Table.

- **Cleaning:** Wipe the surface with a dry cloth. For stubborn marks, use a slightly damp cloth with a mild, non-abrasive cleaner, then dry immediately. Avoid harsh chemicals or abrasive materials that could damage the melamine finish.
- **Mirror Care:** Clean the mirror surface with a glass cleaner and a soft, lint-free cloth. Do not spray cleaner directly onto the LED strip or electrical components.
- **Hardware:** Periodically check all screws and fasteners to ensure they remain tight. Re-tighten as needed to maintain stability.
- **Environmental Conditions:** Avoid placing the dressing table in direct sunlight or near heat sources, as this can cause discoloration or warping over time. Maintain a stable room temperature and humidity.



Figure 7: Detail of the smooth, easy-to-clean desktop surface, emphasizing its durability.

TROUBLESHOOTING

If you encounter any issues with your Devoko Dressing Table, refer to the following common problems and solutions:

Problem	Possible Cause	Solution
LED mirror lights do not turn on.	No power connection; loose wiring; faulty touch switch.	Ensure the power cord is securely plugged in. Check for any visible loose connections. If the issue persists, contact customer support.
Drawers are difficult to open or close.	Improper assembly of drawer slides; obstruction in the drawer path; overloaded drawer.	Check that drawer slides are correctly installed and aligned. Remove any items obstructing the drawer. Reduce the weight in the drawer.
Table feels wobbly or unstable.	Loose fasteners; uneven floor; anti-tipping device not installed.	Tighten all assembly screws. Ensure the table is on a level surface. Install the anti-tipping device securely to the wall.

Problem	Possible Cause	Solution
Missing parts upon delivery.	Product shipped in multiple packages; packaging error.	Confirm if all packages have arrived (product is shipped in two separate packages). If parts are still missing, contact Devoko customer support with your order details.

WARRANTY AND SUPPORT

For warranty information, product support, or to report any issues not covered in this manual, please contact Devoko customer service. Keep your purchase receipt and model number (MW-0513) handy for faster service.

You can typically find support contact information on the Devoko official website or through the retailer where you purchased the product.

For more information about Devoko products, visit the [Devoko Store on Amazon](#).

