

Manuals+

[Q & A](#) | [Deep Search](#) | [Upload](#)

manuals.plus /

› [ANJIELO SMART](#) /

› [ANJIELO SMART 2-Wired Video Intercom System with 1080P Camera and 7-Inch Touch Screen Monitor \(Model D6ICR34W\)](#)

User Manual

ANJIELO SMART D6ICR34W

ANJIELO SMART 2-Wired Video Intercom System

MODEL: D6ICR34W - USER MANUAL

1. Introduction

Thank you for choosing the ANJIELO SMART 2-Wired Video Intercom System. This system provides enhanced home security and convenience, allowing you to see, hear, and speak to visitors at your door, as well as remotely unlock access points. This manual provides detailed instructions for installation, operation, and maintenance to ensure optimal performance of your device.

2. Product Overview

2.1 Included Components

- 1 x 7-inch Touch Screen Indoor Monitor
- 1 x 1080P Outdoor Doorbell Camera
- 5 x IC Cards for unlocking
- Rain Cover for Doorbell
- Connection Terminals
- Mounting Screws and Hardware
- Micro SD Card (32GB)

2.2 Key Features

- **2-Wired Connection:** Simplified installation with only two wires required between the doorbell and monitor.
- **1080P HD Camera:** High-definition video with a 110-degree wide viewing angle for clear visuals.
- **7-inch Touch Screen Monitor:** Intuitive interface for easy operation.
- **WiFi Connectivity:** Connects the monitor to your home WiFi network for remote access via the Tuya Smart app.
- **Motion Detection (PIR):** Automatically records video or captures snapshots when motion is detected, saving to the included micro SD card.
- **3-in-1 Remote Unlock:** Unlock doors via IC card, the indoor monitor, or remotely through the Tuya Smart app.

- **Two-Way Audio:** Communicate with visitors from the indoor monitor or your smartphone.
- **Night Vision:** Ensures clear visibility even in low-light conditions.
- **Rainproof and Anti-vandal Design:** Durable outdoor doorbell unit.

3. Setup and Installation

3.1 Pre-Installation Check

Before permanent installation, it is highly recommended to test the doorbell kit with the original cables. Ensure the distance between the indoor monitor and outdoor doorbell is not too close during testing to avoid audio feedback (noise). The recommended maximum installation distance between the door phone and the monitor is within 100 meters.

3.2 Mounting the Outdoor Doorbell

1. Choose a suitable location for the outdoor doorbell, typically at eye level next to your entrance.
2. Mount the rain cover to the wall using the provided screws.
3. Secure the doorbell unit within the rain cover.

3.3 Mounting the Indoor Monitor

1. Select an appropriate indoor location for the monitor, ensuring it is within reach of a power outlet.
2. Mount the monitor bracket to the wall using the provided screws.
3. Connect the necessary wires to the monitor before securing it to the bracket.

3.4 Wiring Connections

The system uses a simple 2-wire connection between the outdoor doorbell and the indoor monitor. Additional wiring is required for power and optional electronic locks.

2 Wire Cable Connect



Figure 3.4.1: Simplified 2-Wire Connection Overview. This image illustrates the basic 2-wire connection between the outdoor doorbell and the indoor monitor, highlighting the included 32GB SD card and smartphone app integration.

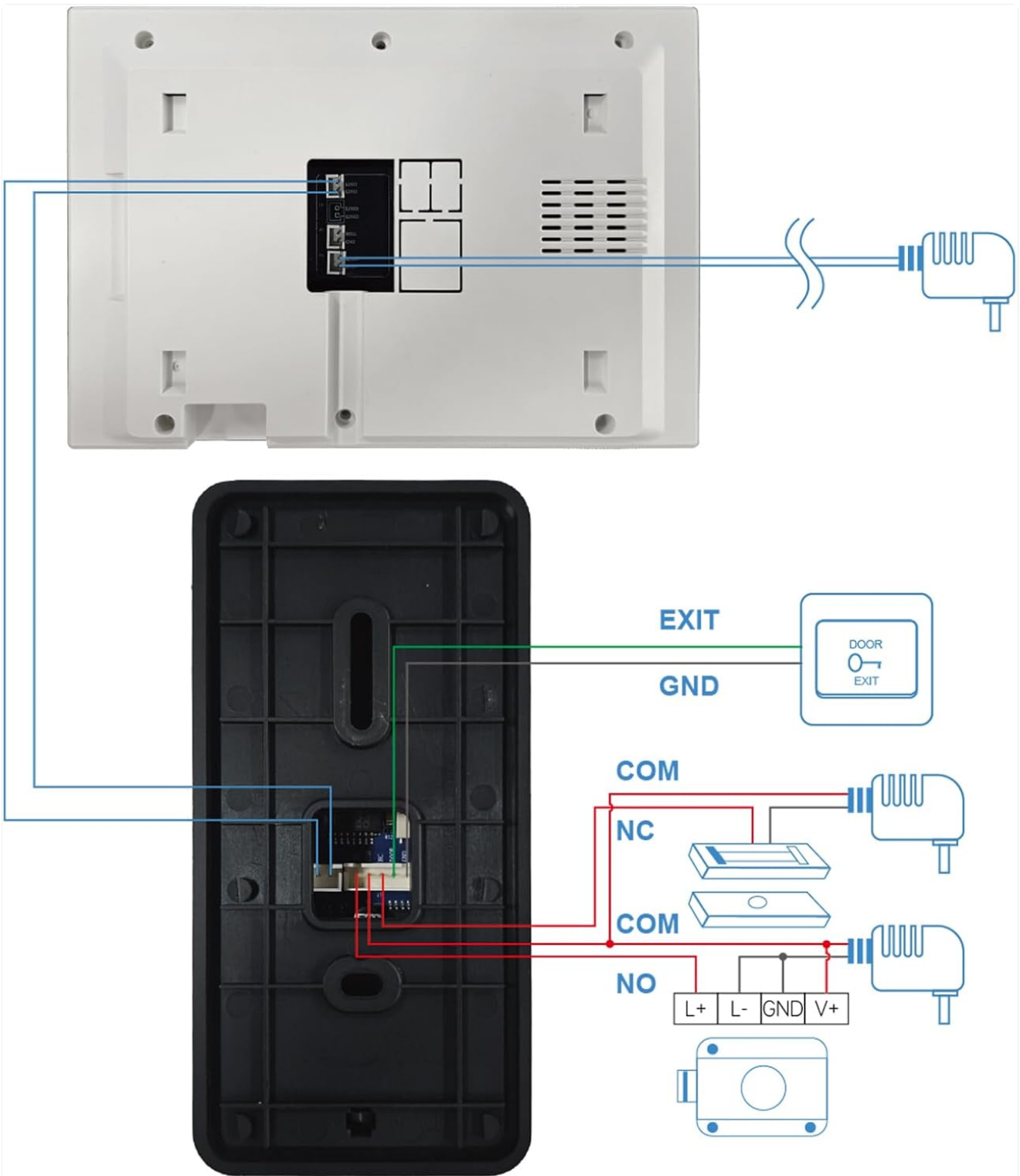


Figure 3.4.2: Wiring Diagram for Electric Lock (NO/NC). This diagram shows how to connect the indoor monitor and outdoor doorbell to an exit button and a standard electric lock (Normally Open/Normally Closed configuration).

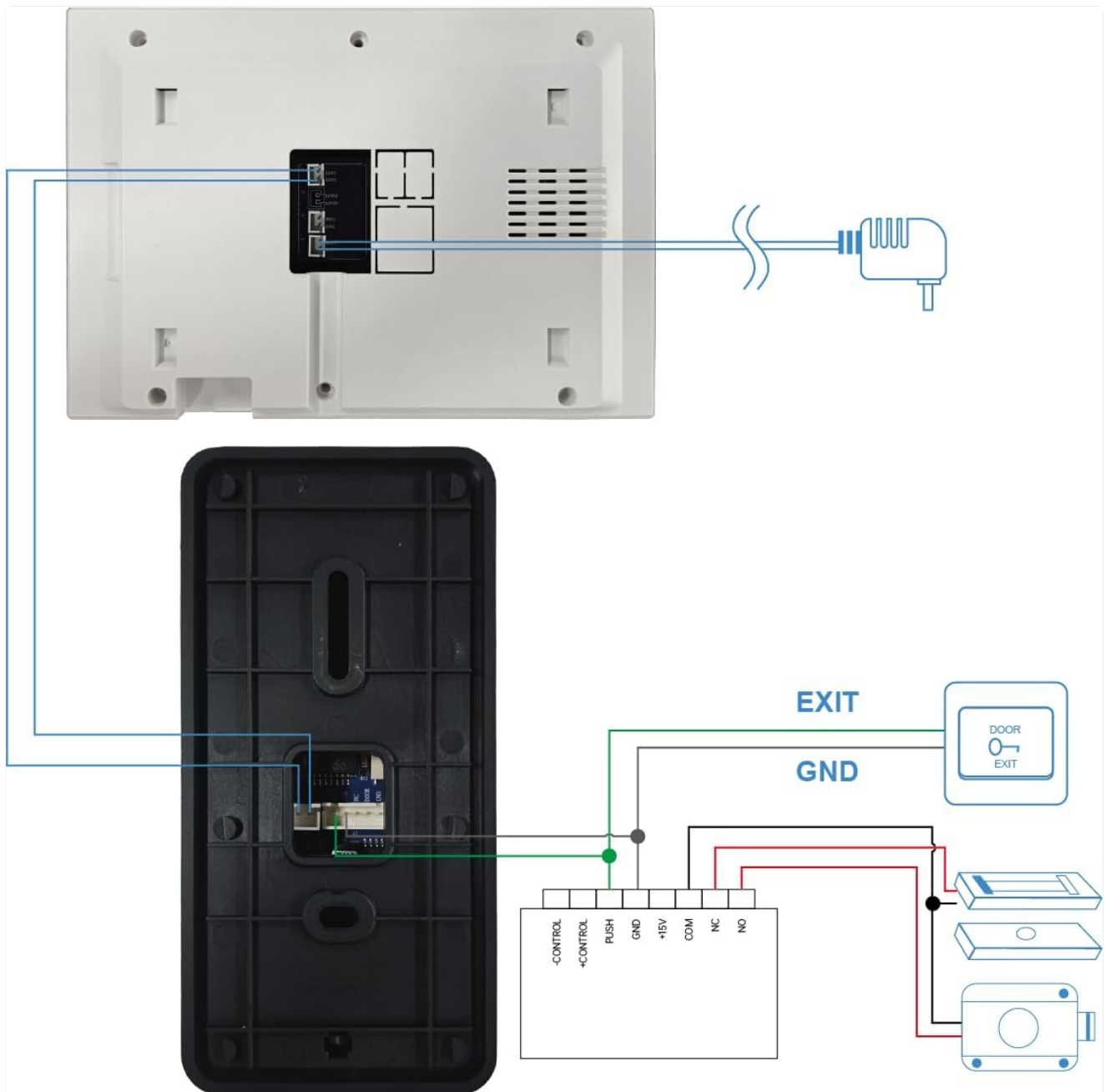


Figure 3.4.3: Wiring Diagram for Electric Strike Lock. This diagram illustrates the wiring connections for the indoor monitor, outdoor doorbell, an exit button, and an electric strike lock, including power supply details.

Refer to the specific wiring diagrams (Figures 3.4.2 and 3.4.3) for connecting power, the outdoor doorbell, the indoor monitor, and any optional electronic locks or exit buttons. Ensure all connections are secure and correctly polarized.

4. Operation

4.1 Indoor Monitor Functions

The 7-inch touch screen monitor provides the primary interface for interacting with the system. When a visitor presses the doorbell, the monitor will display the live video feed from the outdoor camera and ring. You can then:

- **Answer:** Tap the 'Answer' icon to initiate two-way audio communication.
- **Unlock:** Tap the 'Unlock' icon to remotely open a connected electronic lock.
- **Monitor:** View the live feed from the outdoor camera at any time without a doorbell press.
- **Record/Snapshot:** Manually record video or take snapshots of the live feed.

4.2 Two-Way Audio Communication

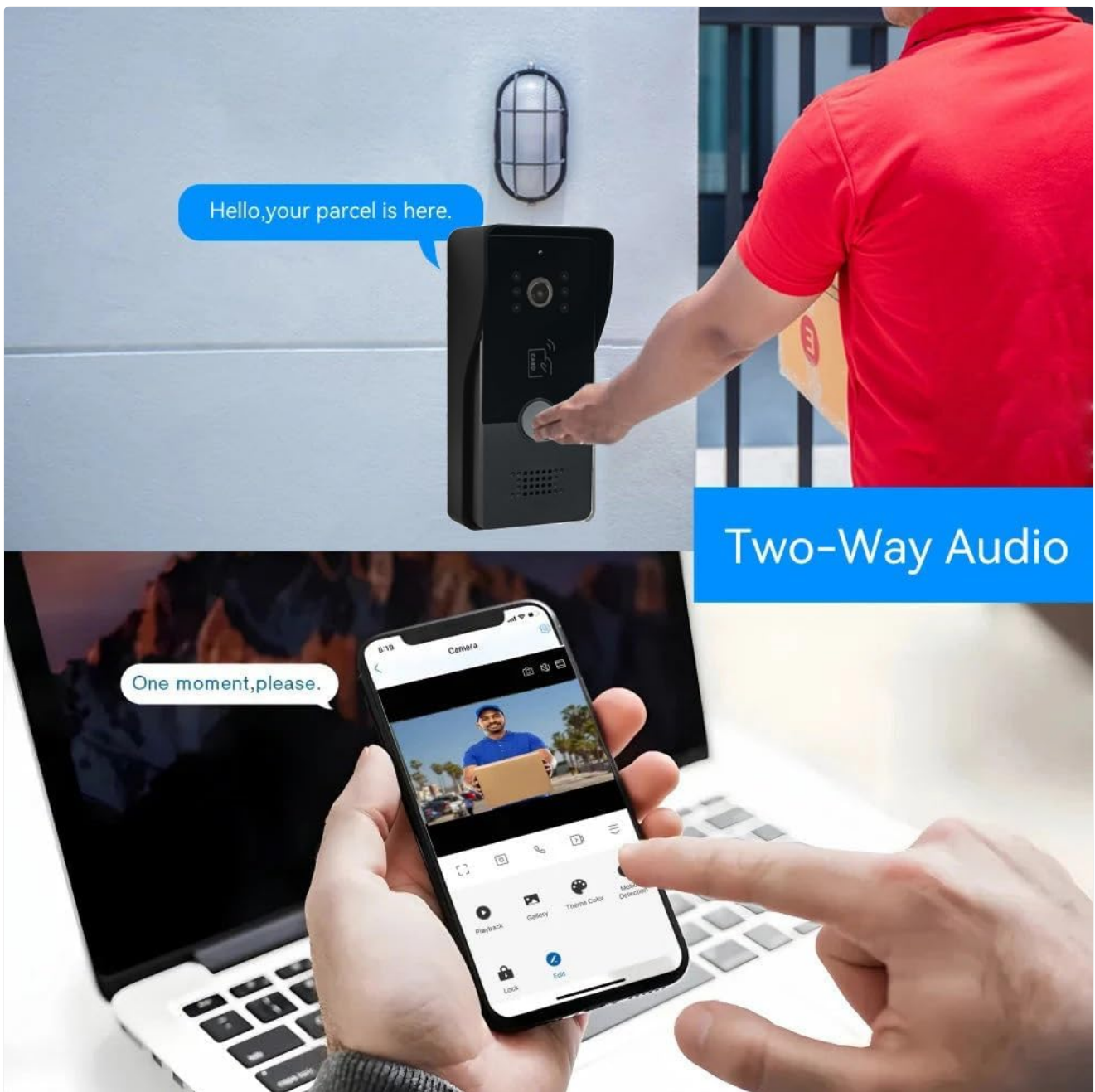


Figure 4.2.1: Two-Way Audio in Action. This image illustrates the two-way audio feature, allowing communication with visitors at the door via the indoor monitor or the smartphone app.

When a visitor presses the doorbell, you can engage in real-time two-way audio communication through the indoor monitor or your smartphone via the Tuya Smart app. This allows you to speak with visitors, delivery personnel, or anyone at your door.

4.3 Remote Unlocking (3-in-1)



Figure 4.3.1: Lock Connection Options. This image demonstrates how the indoor monitor and outdoor doorbell can be connected to and control an electronic lock, such as for a gate or main door.

The system offers three methods for unlocking connected electronic locks:

- **IC Card:** Use one of the five included IC cards by swiping it over the designated area on the outdoor doorbell.
- **Indoor Monitor:** Tap the 'Unlock' icon on the 7-inch touch screen monitor.
- **Tuya Smart App:** Remotely unlock the door from your smartphone, anytime, anywhere.

4.4 Tuya Smart App Integration

APP View and Remote Unlock

Download "Tuya Smart" APP, see out of your door anytime, anywhere.



Figure 4.4.1: App View and Remote Unlock. This image illustrates the functionality of the Tuya Smart app, allowing users to view the doorbell feed and remotely unlock the door from their smartphone.

Download the 'Tuya Smart' app from the Apple App Store or Google Play Store. Once connected to your home WiFi network, the indoor monitor will send notifications to your smartphone when a visitor presses the doorbell or motion is detected. Through the app, you can:

- Receive real-time notifications.
- View live video feed from the doorbell camera.
- Engage in two-way audio communication.
- Remotely unlock connected doors.
- Access recorded videos and snapshots.

4.5 Motion Detection (PIR)



Figure 4.5.1: Motion Detection in Operation. This image demonstrates the PIR motion detection capability of the outdoor doorbell, showing its 110-degree detection angle and how it triggers a notification on the smartphone app.

The outdoor doorbell is equipped with PIR motion detection. When motion is detected within its 110-degree field of view, the system automatically records video or captures snapshots. These recordings are saved to the included micro SD card, providing a record of activity at your doorstep.

5. Maintenance

- **Cleaning:** Use a soft, dry cloth to clean the indoor monitor screen and the outdoor doorbell camera lens. Avoid abrasive cleaners or solvents.
- **Cable Check:** Periodically inspect all wiring connections for any signs of wear or damage. Ensure connections remain secure.
- **Software Updates:** Check the Tuya Smart app for any available firmware updates for the device to ensure optimal performance and security.
- **SD Card Management:** Regularly review and manage recordings on the micro SD card. Format the card periodically to maintain performance.

6. Troubleshooting

- **No Video/Audio:**
 - Check all 2-wire connections between the doorbell and monitor.
 - Ensure the monitor is powered on.
 - Verify the distance between units is within 100 meters.
- **Noise During Testing:**
 - Ensure the indoor monitor and outdoor doorbell are not too close to each other during initial testing.
- **App Connectivity Issues:**
 - Confirm the indoor monitor is connected to a stable 2.4GHz WiFi network.
 - Restart your router and the indoor monitor.
 - Ensure the Tuya Smart app is updated to the latest version.
- **Remote Unlock Not Working:**
 - Check the wiring connections to the electronic lock (refer to Section 3.4).
 - Verify the lock itself is functioning correctly.
- **Motion Detection Not Recording:**
 - Ensure the micro SD card is properly inserted and not full.
 - Check motion detection settings on the monitor or via the Tuya Smart app.

7. Specifications

| | |
|----------------------------------|--|
| Model Name | D6ICR34W |
| Brand | ANJIELO SMART |
| Connectivity Technology | Wired (Monitor to Doorbell), WiFi (Monitor to Network) |
| Video Capture Resolution | 1080p |
| Indoor Monitor Size | 7 inches (Touch Screen) |
| Outdoor Camera View Angle | 110 degrees |
| Special Features | Motion Sensor, Night Vision, Rainproof, Anti-vandal |
| Control Method | App, Touch |
| Power Source | Corded Electric |
| Compatible Devices | Personal Computer, Smartphone |
| Included Storage | 32GB Micro SD Card |
| Installation Type | Surface Mounting (Screw In) |
| Product Dimensions | 1 x 1 x 1 inches (Approximate) |
| Item Weight | 1 pounds (Approximate) |

8. Warranty and Support

For warranty information and technical support, please refer to the documentation provided with your purchase or contact ANJIELO SMART customer service directly. You can typically find contact details on the manufacturer's website or through your retailer.

For further assistance, please visit the ANJIELO SMART Store on Amazon: [ANJIELO SMART Store](#)