

## myCharge AP10B

# myCharge Power + Plug 10,000mAh Portable Charger User Manual

Comprehensive guide for your myCharge Power + Plug 10,000mAh portable charger, featuring built-in USB-C cable and fold-away wall plug.

## INTRODUCTION

The myCharge Power + Plug 10,000mAh portable charger is designed for convenience and efficiency, providing extended battery life for your electronic devices. This compact power bank features a built-in USB-C cable and a fold-away wall plug, eliminating the need for extra adapters and cables. It also includes an additional USB-C port, allowing you to charge two devices simultaneously. With its 10,000mAh internal battery, it offers over 60 hours of additional power, making it an ideal companion for travel and daily use.

## PRODUCT FEATURES

- **USB-C Portable Charger:** Ideal for extending the life of cell phones, iPhones, iPads, Android tablets, Bluetooth speakers, e-readers, and other accessories with a 10,000mAh internal battery.
- **All-in-One Power Bank:** Powers your electronics for 60 hours and features a foldable wall plug, an integrated cable, and an extra port to quickly recharge 2 devices simultaneously.
- **Dual Device Charger:** Compact external battery pack features (1) built-in USB Type C cable and (1) USB-C port, making it a great travel companion to charge two devices at the same time.
- **Convenient Phone Charger:** Battery charges smart phones at 2.4 times a regular power bank and easily fits into a bag or suitcase, making it optimal for vacations and business travel.
- **Designed in USA:** Charger designed in Michigan and covered by a 1 year warranty; Compatible with Apple iPhone, iPad, Android, tablets, Bluetooth speakers, wireless headphones, and USB accessories.

## WHAT'S IN THE BOX

- 1 x myCharge Power + Plug 10,000mAh Portable Charger (Model AP10B)
- 1 x User Manual

## SAFETY INFORMATION

Please read all safety instructions before using this product to prevent injury or damage. Keep this manual for future reference.

- Do not expose the device to extreme temperatures (heat or cold), direct sunlight, or high humidity.
- Do not disassemble, open, or attempt to repair the device yourself. Refer all servicing to qualified personnel.
- Avoid dropping, hitting, or subjecting the device to strong impacts.
- Keep the device away from water and other liquids.
- Do not use the device if it has been damaged in any way, such as a cracked casing or exposed components.
- Dispose of the device and its battery responsibly according to local regulations. Do not dispose of in household waste.

## SETUP

---

### Charging Your Power Bank

Before first use, fully charge your myCharge Power + Plug portable charger. The integrated fold-away wall plug makes recharging convenient.

1. Locate the fold-away wall plug on the back of the power bank.
2. Flip out the prongs of the wall plug.
3. Plug the power bank directly into a standard wall outlet.
4. The LED indicator lights on the front of the power bank will illuminate to show the charging status. All four lights will be solid when fully charged.



Image: The myCharge Power + Plug 10,000mAh Portable Charger with its fold-away wall plug extended and plugged into a wall outlet for recharging.

## Checking Battery Level

To check the remaining battery life of your power bank, simply press the small button located next to the LED indicator lights. The number of illuminated LEDs indicates the charge level:

- 4 LEDs: 75-100% charged
- 3 LEDs: 50-75% charged
- 2 LEDs: 25-50% charged
- 1 LED: 0-25% charged (recharge soon)

### Charging Your Devices

The myCharge Power + Plug offers two ways to charge your devices: via the built-in USB-C cable or the additional USB-C port.

#### 1. Using the Built-in USB-C Cable:

- Gently pull out the integrated USB-C cable from its storage slot on the side of the power bank.
- Connect the USB-C end of the cable to your compatible device (e.g., smartphone, tablet, earbuds).
- The power bank will automatically begin charging your device.

#### 2. Using the Additional USB-C Port:

- Connect your device's USB-C charging cable (not included) to the USB-C port on the power bank.
- Connect the other end of your cable to your device.
- The power bank will automatically begin charging your device.

You can charge two devices simultaneously by using both the built-in cable and the additional USB-C port.



# Power + Plug 10K

PORTABLE CHARGER

## Cable + Wall Plug

Integrated prongs for convenient re-charging.  
USB-C charging cable & port.



Image: The myCharge Power + Plug 10,000mAh Portable Charger with its integrated USB-C charging cable extended, ready to connect to a device.



Image: A visual representation of the myCharge Power + Plug 10,000mAh Portable Charger's ability to charge various devices, including smartphones, tablets, earbuds, headphones, and speakers.

## Product Demonstration Video

Your browser does not support the video tag.

Video: This video demonstrates the key features and ease of use of the myCharge Power + Plug 10,000mAh portable charger, including its built-in wall plug, integrated USB-C cable, and additional USB-C port for charging multiple devices.

## MAINTENANCE

- **Cleaning:** Use a soft, dry cloth to clean the exterior of the power bank. Do not use harsh chemicals or abrasive materials.
- **Storage:** Store the power bank in a cool, dry place away from direct sunlight and extreme temperatures. If storing for an extended period, ensure it is partially charged (around 50%) to preserve battery health.
- **Battery Care:** To maximize battery lifespan, avoid fully discharging the power bank frequently. Recharge it when the battery level is low.

## TROUBLESHOOTING

Problem	Possible Cause	Solution
Power bank not charging	Wall plug not fully inserted; outlet not active; power bank fully charged.	Ensure wall plug is securely inserted. Try a different outlet. Check LED indicators; if all are solid, it's fully charged.
Device not charging from power bank	Power bank battery depleted; cable not properly connected; device incompatible; device already fully charged.	Recharge the power bank. Ensure cables are securely connected to both the power bank and the device. Verify device compatibility with USB-C. Check device's battery level.
Slow charging	Device requires higher charging current; multiple devices charging simultaneously; cable issue.	While the power bank provides efficient charging, some devices may charge slower than with their original high-wattage chargers. Try charging one device at a time. Ensure the cable is in good condition.

## SPECIFICATIONS

Feature	Detail
Brand	myCharge
Model Number	AP10B
Battery Capacity	10,000 Milliamp Hours (mAh)
Product Dimensions	4.8 x 2.78 x 0.87 inches
Item Weight	8.8 ounces
Connector Type	Built-in USB-C cable & USB-C port
Special Features	Built-in Cable, Fold-away Wall Plug
Color	10000 mAh - Blue
Batteries	2 Lithium Polymer batteries (included)

## WARRANTY AND SUPPORT

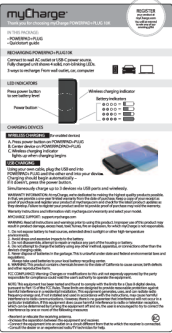
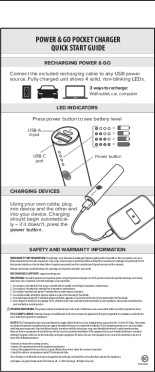
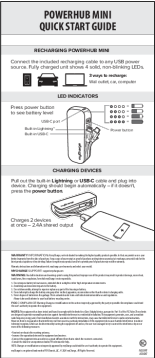
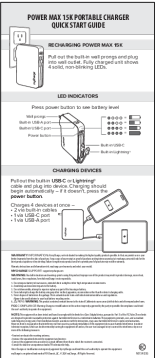
The myCharge Power + Plug 10,000mAh Portable Charger is covered by a **1-year warranty** from the date of purchase. This warranty covers defects in materials and workmanship under normal use.

For warranty claims, technical support, or any questions regarding your product, please contact myCharge customer service:

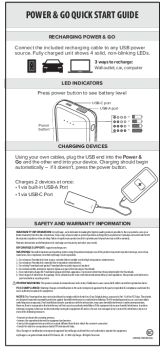
- **Website:** Visit the official myCharge website for support resources and contact information.
- **Email:** Refer to your product packaging or the myCharge website for direct email support.
- **Phone:** Refer to your product packaging or the myCharge website for customer service phone numbers.

Please have your product model number (AP10B) and proof of purchase ready when contacting support.

## Related Documents - AP10B

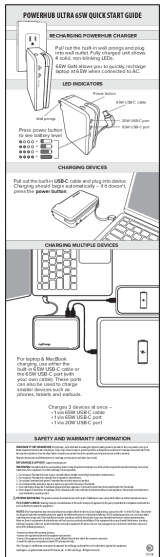
	<p><a href="#">myCharge PowerPad+Plug 10K Quick Start Guide</a></p> <p>This guide provides instructions for the myCharge PowerPad+Plug 10K, including setup, charging, and safety information. It covers both wireless and USB charging, LED indicators, and FCC compliance.</p>
	<p><a href="#">Power &amp; Go Pocket Charger Quick Start Guide</a></p> <p>A quick start guide for the Power &amp; Go Pocket Charger, detailing how to recharge the device, understand LED indicators, charge other devices, and important safety and warranty information.</p>
	<p><a href="#">PowerHub Mini Quick Start Guide</a></p> <p>Quick start guide for the myCharge PowerHub Mini portable charger, detailing how to recharge the device and charge other devices using its built-in cables and USB-C port.</p>
	<p><a href="#">myCharge Power Max 15K Portable Charger Quick Start Guide</a></p> <p>Quick start guide for the myCharge Power Max 15K portable charger. Learn how to recharge the device, understand LED indicators, charge your devices, and find warranty and support information.</p>





[myCharge Power & Go Quick Start Guide: Charging and Safety Information](#)

Concise guide to using the myCharge Power & Go portable charger, covering recharging, LED indicators, device charging, and important safety and warranty information. Includes model numbers APM5W and APM10W.



[myCharge PowerHub Ultra 65W Quick Start Guide](#)

Get started quickly with the myCharge PowerHub Ultra 65W portable charger. This guide explains how to recharge the power bank, charge your devices (laptops, phones, tablets), and provides essential safety and warranty information.

