

## Manuals+

[Q & A](#) | [Deep Search](#) | [Upload](#)

manuals.plus /

- › [RGF](#) /
- › [RGF HALO-LED Whole Home In-Duct Air Purifier User Manual](#)

## RGF REME-LED

# RGF HALO-LED® Whole Home In-Duct Air Purifier

## USER MANUAL

### PRODUCT OVERVIEW

---

The RGF HALO-LED® is an advanced in-duct air purification system designed to improve indoor air quality throughout your entire home. It utilizes innovative REME-LED UV technology combined with RGF's proven PHI-CELL and REME technologies to actively reduce airborne and surface contaminants, providing a mercury-free and zero-ozone compliant solution.

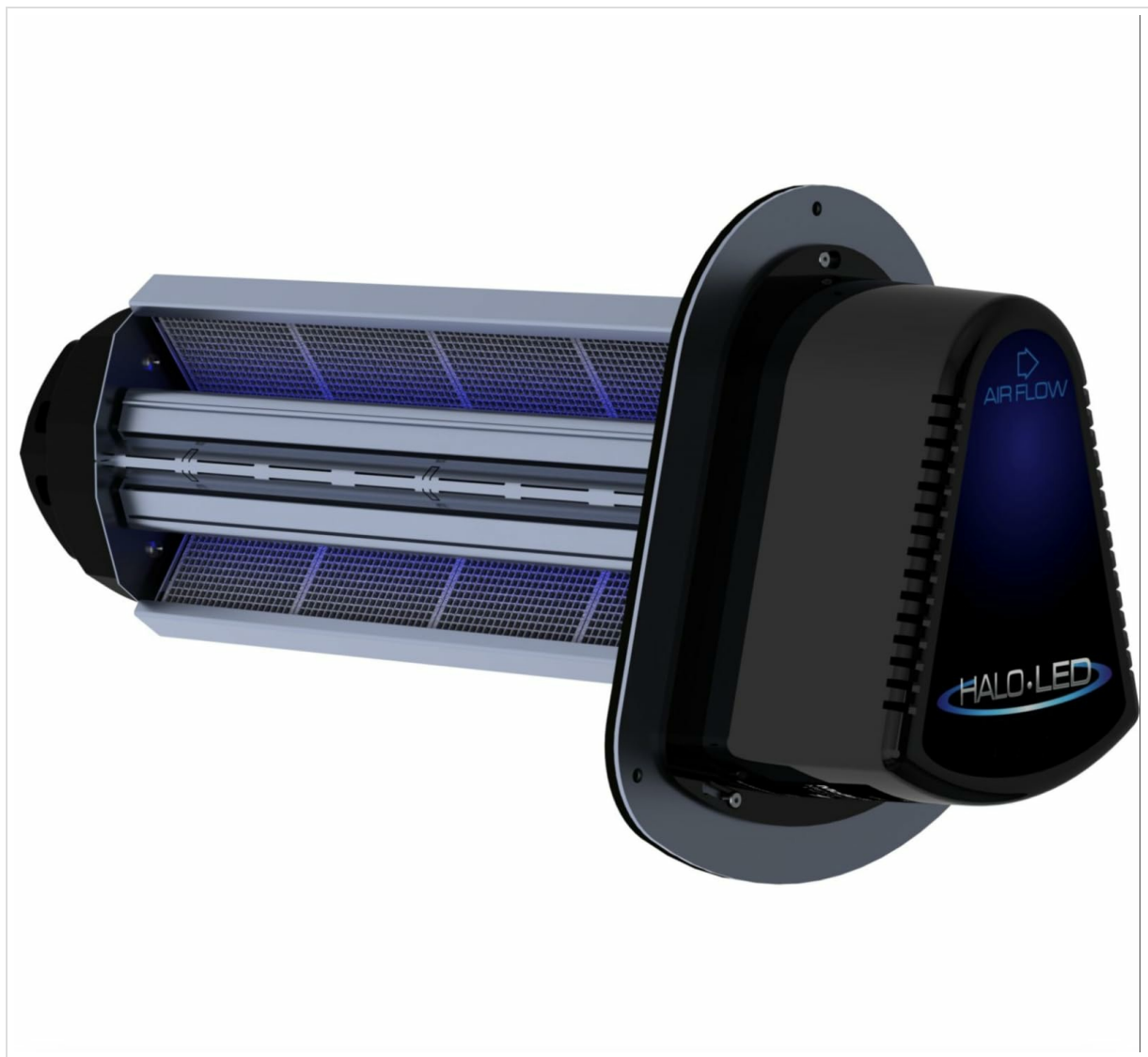


Figure 1: The RGF HALO-LED® Whole Home In-Duct Air Purifier unit, showcasing its compact design and internal components.

## Key Features

- New REME-LED technology utilizing RGF's patented PHI and REME technologies providing superior indoor air purification.
- New hybrid hydrophilic catalyst incorporating the industry's first washable ceramic catalyst.
- Unlimited cycling capability designed to turn on/off with the HVAC system.
- 24 VAC/DC input (24 VAC transformer included).
- Long-life replaceable LED cell module with 2.5x longer life than current mercury vapor UV lamp technologies.

## SAFETY INFORMATION

---

Please read all safety instructions carefully before installing, operating, or maintaining the HALO-LED® unit. Failure to follow these instructions may result in electric shock, fire, property damage, or personal injury.

- **Electrical Hazard:** Disconnect power to the HVAC system before installation or servicing. Ensure proper grounding.
- **Installation:** Installation should be performed by a qualified HVAC professional in accordance with all local and national electrical and building codes.

- **UV Light Exposure:** Do not look directly at the UV light when the unit is operating. UV light can be harmful to eyes and skin.
- **Maintenance:** Only use genuine RGF replacement parts. Refer to the maintenance section for proper procedures.
- **Note:** Statements regarding dietary supplements have not been evaluated by the FDA and are not intended to diagnose, treat, cure, or prevent any disease or health condition. This product is an air purification device.

## INSTALLATION GUIDE

---

### Before You Begin

- Ensure the HVAC system is turned off and power is disconnected at the breaker.
- Verify that you have all necessary tools and components as listed in the product packaging.
- Select an appropriate location in the HVAC ductwork, typically downstream from the air handler.

### Installation Steps

1. **Prepare Ductwork:** Cut an appropriately sized opening in the HVAC ductwork at the chosen installation point. Refer to the template provided with the unit for precise dimensions.
2. **Mount the Unit:** Insert the HALO-LED® unit into the prepared opening. Secure the mounting flange to the ductwork using self-tapping screws, ensuring a tight seal to prevent air leakage.
3. **Connect Wiring:** Connect the 24 VAC/DC input wires from the HALO-LED® unit to the low-voltage terminals of the HVAC system's transformer or control board. Ensure correct polarity if specified. The included 24 VAC transformer can be used if a suitable power source is not available.
4. **Verify Airflow Direction:** Ensure the unit is oriented correctly with respect to the airflow in the duct. The "AIR FLOW" arrow on the unit should point in the direction of air movement.
5. **Restore Power:** Once installation is complete and all connections are secure, restore power to the HVAC system.



Figure 2: Illustration showing the correct orientation of the HALO-LED unit within the ductwork, with the "AIR FLOW" indicator pointing in the direction of air movement.



Figure 3: Top-down view of the HALO-LED unit, highlighting the "AIR FLOW" indicator and mounting points for installation.

## OPERATION

---

### Basic Operation

The RGF HALO-LED® unit is designed for continuous operation and will automatically activate when the HVAC system is running. It integrates seamlessly with your existing HVAC system, turning on and off with the blower fan.

- Once installed and powered, the unit will begin its air purification process.
- There are no user-adjustable settings or controls on the unit itself, as it operates automatically.
- The unit features a button control, primarily for diagnostic purposes or initial setup verification by a professional.

### Indicator Lights

The HALO-LED® unit may feature an indicator light to confirm operation. Consult the specific product documentation or the installer for details on light behavior (e.g., solid blue for normal operation, flashing for

error).

## MAINTENANCE

---

Regular maintenance ensures optimal performance and longevity of your HALO-LED® unit. Always disconnect power to the HVAC system before performing any maintenance.

### Cleaning the Unit

The hybrid hydrophilic catalyst is washable. Periodically, or as indicated by performance, the catalyst can be removed and gently cleaned with mild soap and water. Ensure it is completely dry before reinstallation.

### Replacing the LED Cell Module

The LED cell module has a long life, significantly longer than traditional UV lamps. When replacement is necessary, typically after several years of continuous operation, contact a qualified technician or refer to the detailed replacement instructions provided with genuine RGF replacement parts. Do not attempt to replace the module without proper training and safety precautions.

### Maintenance Schedule

- **Annually:** Inspect the unit for any visible damage or debris. Clean the washable ceramic catalyst as needed.
- **As Needed:** Replace the LED cell module when its operational life is reached or if an error indicator suggests a malfunction.

## TROUBLESHOOTING

---

This section provides solutions to common issues you might encounter. For problems not listed here, or if issues persist, contact a qualified HVAC professional or RGF customer support.

Problem	Possible Cause	Solution
Unit not operating when HVAC is on.	No power to the unit; incorrect wiring; faulty LED cell module.	Check power supply to HVAC system. Verify wiring connections. Consult a professional for module testing/replacement.
Reduced air purification effectiveness.	Dirty catalyst; end of LED cell module life.	Clean the washable ceramic catalyst. Consider replacing the LED cell module.
Unusual odors from the unit.	Accumulation of dust/debris on catalyst.	Clean the washable ceramic catalyst thoroughly.

## TECHNICAL SPECIFICATIONS

---

Model Number	REME-LED
Brand	RGF (Manufacturer)
Product Dimensions	11"D x 6.5"W x 7.5"H (11 x 6.5 x 7.5 inches)

<b>Weight</b>	8 Pounds
<b>Power Input</b>	24 VAC/DC (24 VAC transformer included)
<b>Controller Type</b>	Button Control
<b>Color</b>	Black
<b>Country of Origin</b>	China
<b>First Available Date</b>	September 9, 2024

## WARRANTY AND SUPPORT

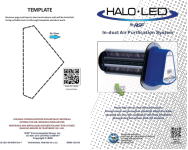


The RGF HALO-LED® unit is backed by a manufacturer's warranty. For specific warranty terms, duration, and conditions, please refer to the warranty card included with your product or visit the official RGF Environmental Group, Inc. website. Please note that warranty coverage may vary based on purchase channel and installation by certified professionals.




For technical support, service, or to inquire about genuine replacement parts, please contact your authorized RGF dealer or RGF customer service directly. Always provide your product model number (REME-LED) and date of purchase when seeking support.

*Disclaimer:* As per customer reviews, some online purchases may not be covered by the manufacturer's warranty. It is highly recommended to verify warranty terms with the seller and manufacturer prior to purchase.

© 2024 RGF Environmental Group, Inc. All rights reserved. HALO-LED® is a registered trademark of RGF Environmental Group, Inc.

## Related Documents - REME-LED

	<p><a href="#">HALO-LED In-duct Air Purification System Installation and Maintenance Manual</a></p> <p>This manual provides installation and maintenance instructions for the RGF HALO-LED® In-duct Air Purification System. It details the system's features, installation steps, electrical connections, and warranty information.</p>
	<p><a href="#">HALO-LED In-duct Air Purification System Installation and Operation Manual</a></p> <p>This manual provides detailed instructions for the installation, operation, and maintenance of the HALO-LED In-duct Air Purification System by RGF Environmental Group, Inc. It covers safety precautions, mounting, electrical connections, and component replacement.</p>
	<p><a href="#">RGF REME HALO In-duct Air Purification System Installation and Warranty Guide</a></p> <p>Comprehensive guide for the RGF REME HALO in-duct air purification system, covering installation, operation, features, and limited warranty information. Learn how to effectively improve indoor air quality with this advanced purification technology.</p>

	<p><a href="#">RGF REME-HALO-LED Installation Guide: Air Sensing Switching</a></p> <p>Technical bulletin from RGF Environmental Group, Inc. detailing the installation of the REME-HALO-LED with air sensing switching, including important notices for installers and part ordering information.</p>
	<p><a href="#">RGF Guardian Air QR+™ Air Purification System: Installation, Operation, and Warranty</a></p> <p>This document provides comprehensive information on the RGF Guardian Air QR+™ air purification system, including its features, installation procedures, commercial and residential applications, and detailed warranty terms. Learn how to enhance indoor air quality with advanced oxidation technology.</p>
	<p><a href="#">RGF REME HALO: Installation, Operation, and Warranty Guide</a></p> <p>Comprehensive guide for the RGF REME HALO air purification system, covering installation, operation, output adjustment, cell replacement, FAQs, and limited warranty information for improved indoor air quality.</p>