

[Manuals.plus](#) /

> [YBQZJSLY](#) /

> YBQZJSLY 15V Power Adapter Instruction Manual for Philips Trimmers

YBQZJSLY 15V Power Adapter for Philips Trimmers

YBQZJSLY 15V Power Adapter Instruction Manual

For Philips HQ8505 and Compatible Trimmers

1. INTRODUCTION

This manual provides essential information for the safe and effective use of your YBQZJSLY 15V Power Adapter. This adapter is designed as a replacement or spare charger for a range of Philips beard and hair trimmers. Please read these instructions carefully before use and retain them for future reference.

2. COMPATIBILITY

This power adapter is specifically designed for use with Philips devices requiring a 15V power supply with the HQ8505 connector type.

2.1 Compatible Models:

- Philips HQ8505
- Philips BT9810, BT3230, BT3210, BT5511
- Philips MG7750, MG7770, MG5750
- Philips QP6530 Beard and Hair Trimmer

For a comprehensive list of compatible Philips shaver series, refer to the image below.

HQ5 Series: HQ560 HQ586 HQ568 HQ6 series: HQ6070 HQ6071 HQ6075 HQ6095 HQ6073 HQ6090

HQ7 series: HQ7290 HQ7240 HQ7120 HQ7140 HQ7160 HQ7180 HQ7260 HQ7310 HQ7320 HQ7340 HQ7350
 HQ7360 HQ7380 HQ7390 HQ7100 HQ7200 HQ7141 HQ7142 HQ7143 HQ7165 HQ7742 HQ7760
 HQ7762 HQ7780 HQ7782 HQ7740HQ7300 HQ7330 HQ7363 HQ7800 HQ7890 HQ7340 HQ7350

HQ8 series: HQ8140 HQ8160 HQ8170 HQ8885 HQ8890HQ8894 HQ8240 HQ8250 HQ8100 HQ8142 HQ8150
 HQ8174 HQ8172 HQ8141 HQ8155 HQ8173 HQ8200 HQ8241 HQ8253 HQ8260 HQ8261 HQ8270
 HQ8290 HQ8445 HQ8825 HQ8845 HQ8865 HQ8875 HQ890 HQ8894 HQ8890

HQ9 series: HQ9070 HQ9080 HQ9090 HQ9160 HQ9170HQ9190 HQ9100 HQ9140 HQ9020 HQ9161 HQ9199
 HQ909 HQ912 HQ915 HQ916 HQ917 HQ988 HQ9170 HQ9190

RQ10 series:HQ9070 HQ9080 HQ9090 HQ9160 HQ9170HQ9190 HQ9100 HQ9140 HQ9020 HQ9161
 HQ9199 HQ909 HQ912 HQ915 HQ916 HQ917 HQ988 HQ9170 HQ9190

RQ11 series:RQ1150 RQ1180 RQ1175 RQ1195

RQ12 series:RQ1250 RQ1260 RQ1280 RQ1290 RQ1251 RQ1286 RQ1296 RQ1297

AT series: AT750 AT751 AT890 AT89 YS series: YS523 YS526 YS536

HS8 series: HS8020 HS8420 HS8060 HS8040 HS8 series: RQ360 RQ361 RQ370



Image: Detailed list of Philips shaver series compatible with the 15V power adapter.

2.2 Incompatibility:

This adapter is **not suitable** for Philips devices requiring 4.3V, 5V, or 8V power supplies, or models with different connector types. Specifically, it is not compatible with:

- Philips QP2724, QP4530, QP2834, QP4631, QP6531

Always verify the voltage and connector type of your device before connecting the charger. Refer to the visual guide below to ensure the correct interface is selected.

Choose the Correct Interface

Check the Shape of Your Philips Shaver Charging Port Before Purchase

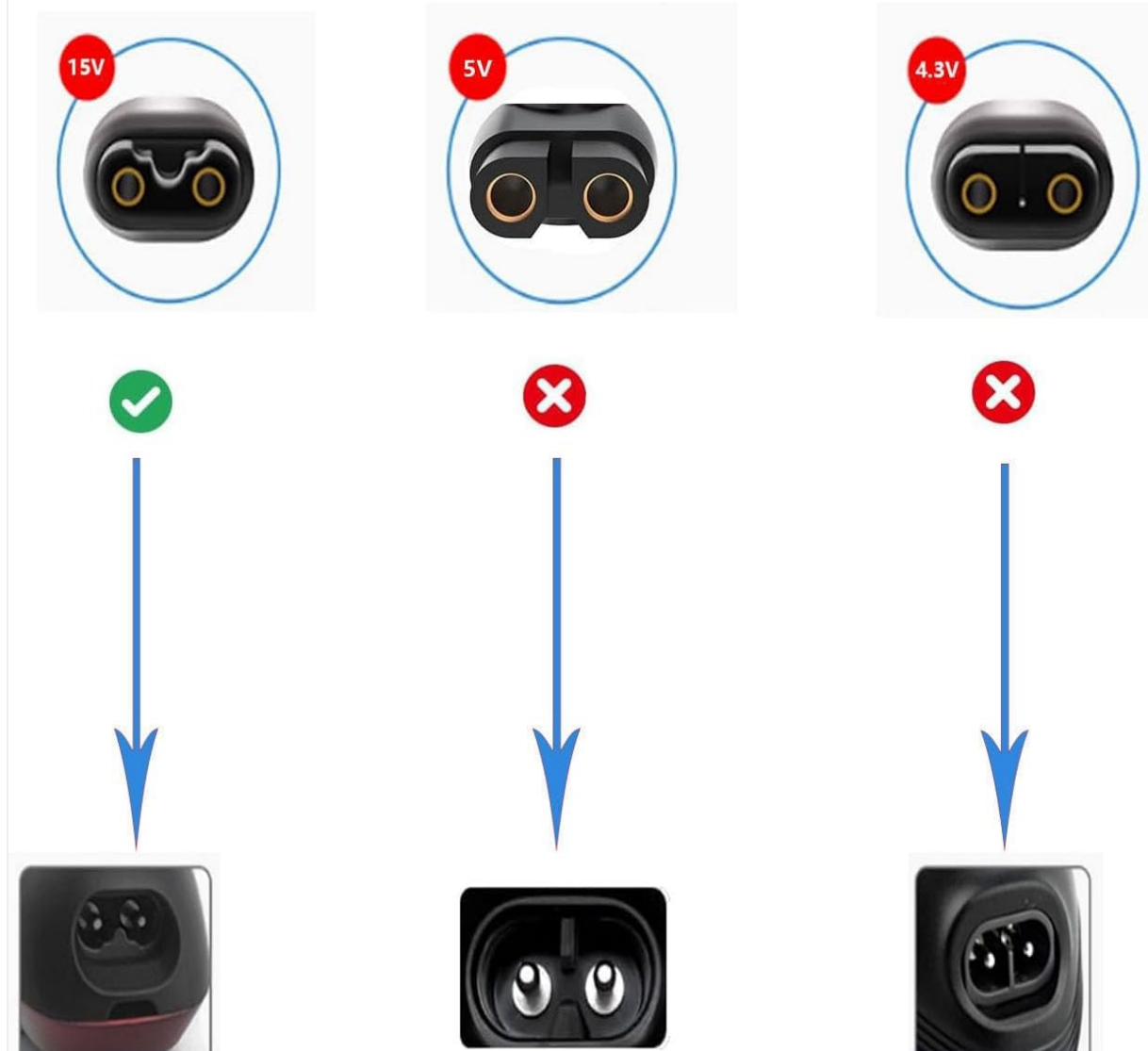


Image: Guide to choosing the correct charging interface based on voltage and connector shape.

3. SAFETY INFORMATION

- **Voltage Matching:** Ensure the voltage requirements of your device match the output of this adapter (15V). Using an incorrect voltage can damage your device.
- **Dry Environment:** Use the charger in dry conditions. Avoid exposure to water or high humidity.
- **Cable Integrity:** Do not use the charger if the cable or plug is damaged.
- **Ventilation:** Ensure adequate ventilation around the charger during use.
- **Unplug When Not in Use:** Disconnect the charger from the power outlet when not in use or during electrical storms.
- **Children and Pets:** Keep the charger out of reach of children and pets.
- **Charging Indicator:** The charger features a light that indicates normal operation, making it safe for overnight charging.

4. SETUP

To set up your YBQZJSLY 15V Power Adapter:

1. **Inspect:** Before first use, visually inspect the power adapter and cable for any signs of damage.
2. **Connect to Device:** Insert the 2-pin connector end of the power adapter firmly into the charging port of your compatible Philips trimmer.
3. **Connect to Power Outlet:** Plug the AC adapter into a standard 110-240V wall outlet.

The charger is now ready to supply power to your device. An example of the charger in use is shown below.



Image: The 15V power adapter connected to a Philips shaver and a wall outlet.

5. OPERATING INSTRUCTIONS

Once connected as described in the 'Setup' section, the power adapter will begin charging your device. The integrated light on the charger indicates normal operation. Your device's charging indicator (if present) will show its charging status.

- **Charging Time:** Refer to your Philips trimmer's user manual for specific charging times.
- **Overnight Charging:** The charger is designed for safe operation, including during nighttime charging.
- **Disconnecting:** Once charging is complete, or if you need to use the trimmer, disconnect the charger from the power outlet first, then from the trimmer.

6. MAINTENANCE

Proper maintenance ensures the longevity and safe operation of your power adapter.

- **Cleaning:** Disconnect the charger from the power outlet and your device before cleaning. Wipe the adapter and cable with a soft, dry cloth. Do not use liquid cleaners or abrasive materials.
- **Storage:** When not in use, store the charger in a cool, dry place, away from direct sunlight and extreme temperatures. Avoid tightly winding the cable to prevent damage.
- **Cable Care:** Do not bend, twist, or pull the cable excessively. Avoid placing heavy objects on the cable.

7. TROUBLESHOOTING

If you encounter issues with your power adapter, please refer to the following common solutions:

Problem	Possible Cause	Solution
Charger light is off / Device not charging	No power to the outlet; Loose connection; Incompatible device.	Check if the power outlet is working (test with another device). Ensure both ends of the charger are securely connected. Verify your device is listed as compatible (15V, correct connector).
Charger or device gets unusually hot	Overload; Poor ventilation; Internal fault.	Immediately disconnect the charger. Ensure it's used in a well-ventilated area. If the issue persists, discontinue use and contact support.
Physical damage to cable or adapter	Wear and tear; Accidental damage.	Discontinue use immediately. Do not attempt to repair. Replace the adapter.

If these steps do not resolve the issue, please refer to the warranty and support section.

8. SPECIFICATIONS

Technical details of the YBQZJSLY 15V Power Adapter:

- **Input:** AC 110-240V, 50-60Hz
- **Output:** DC 15V, 1A
- **Cable Length:** 5 feet (approximately 1.5 meters)

- **Connector Type:** Proprietary 2-pin (compatible with Philips HQ8505 type)
- **Color:** Black
- **Included Components:** 1x 2-Pin Power Adapter, 1x 5 feet Cable
- **Package Dimensions:** 5.67 x 3.82 x 1.02 inches
- **Item Weight:** 1.44 ounces



Image: The YBQZJSLY 15V Power Adapter.

9. WARRANTY AND SUPPORT

Your YBQZJSLY 15V Power Adapter comes with the following assurances:

- **Refund Policy:** 30 days refund period from the date of purchase.
- **Exchange Policy:** 12 months exchange for defective products.
- **Warranty:** 24 months warranty covering manufacturing defects.

For warranty claims, technical support, or any questions regarding the product, please contact the seller or manufacturer directly through your purchase platform. Provide your order number and a detailed description of the issue for prompt assistance.