

[Manuals.plus](#) /

> [KINDEEP](#) /

> KINDEEP Tracker Air Tag User Manual

KINDEEP BT001

KINDEEP Tracker Air Tag User Manual

Model: BT001

INTRODUCTION

The KINDEEP Tracker Air Tag is a smart GPS tracker designed to help you effortlessly locate your valuables. This device integrates seamlessly with the Apple Find My app on iOS devices, allowing you to track items such as luggage, keys, backpacks, and pets. With features like nearby finding, left-behind reminders, and a lost mode, it provides peace of mind by helping you keep track of your important belongings.



Image: Four KINDEEP Tracker Air Tags, highlighting the multi-pack offering.

SETUP AND PAIRING

Follow these steps to set up your KINDEEP Tracker Air Tag and pair it with your iOS device:

1. **Prepare Your Device:** Ensure your iOS device (iPhone, iPad, or iPod touch) has Bluetooth and Location Services enabled. Open the "Find My" app.

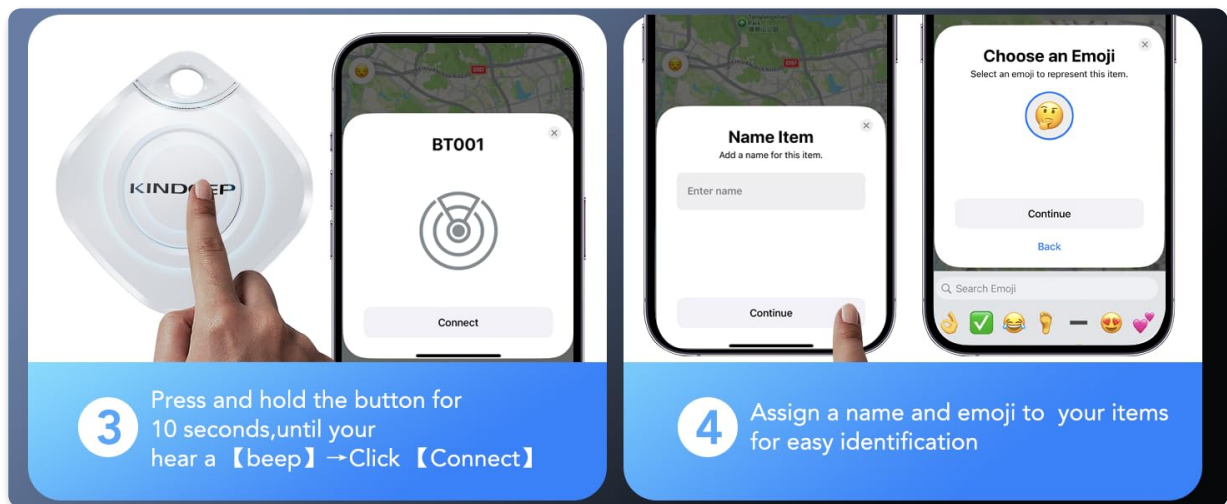
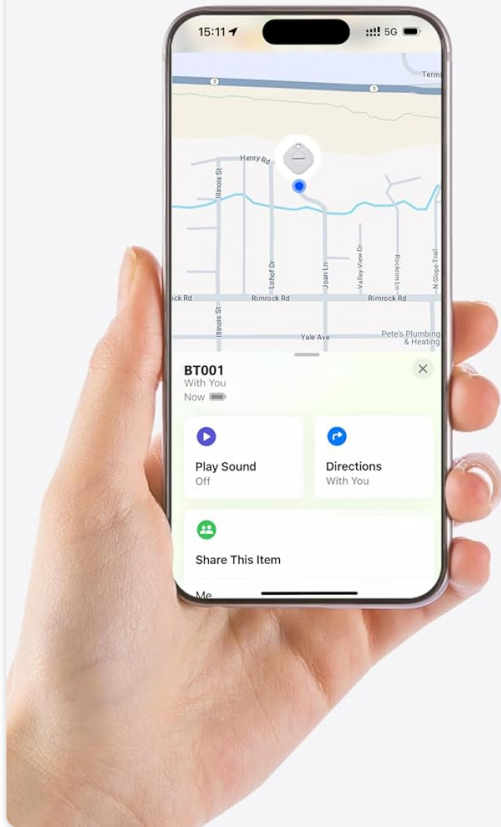


Image: Visual guide for enabling Bluetooth and Location Services, and selecting "Add New Item" in the Find My app.

2. **Add New Item:** In the "Find My" app, navigate to the "Items" tab. Tap the "+" icon (Add Item) located at the bottom of the screen, then select "Other Supported Item".
3. **Activate Tracker:** Press and hold the button on your KINDEEP Tracker Air Tag for approximately 10 seconds until you hear a "beep" sound. This indicates it's ready for pairing.
4. **Connect:** Your iOS device should detect the KINDEEP Tracker. Tap "Connect" when prompted. The pairing process typically completes within 30 seconds.
5. **Name Your Tracker:** Assign a name and an emoji to your tracker for easy identification within the Find My app (e.g., "Luggage Tag", "Keys").

Smart Bluetooth Tracker



Note: Only iOS devices are supported, not Android

Image: KINDEEP Tracker Air Tag demonstrating compatibility with Apple Find My and Siri on an iOS device.

OPERATING YOUR KINDEEP TRACKER

Finding Nearby Items

When your KINDEEP Tracker is within Bluetooth range (up to 200ft/60m), you can use the Find My app to locate it. Simply open the app, select your tracker, and tap "Play Sound". The built-in speaker will emit a loud beep (80-100 dB) to help you pinpoint its exact location. You can also ask Siri for assistance.

Find Nearby

Simply ring with 'Play Sound' to instantly locate your item



Image: Using the "Play Sound" feature in the Find My app to locate a nearby KINDEEP Tracker.

Finding Far Away Items (Lost Mode)

If your KINDEEP Tracker is out of Bluetooth range, you can still track its location using the Find My network. The Find My app will display the last known location on a map. You can also enable "Lost Mode" in the app. When in Lost Mode, if another Apple device user comes within range of your tracker, its location will be updated on your map, and they can view your contact information (if you've provided it) to help return your item.

Find Far Away

Track and find your items anywhere on the map of your Find My app.



Image: Tracking a KINDEEP Tracker Air Tag on a map when it is far away.

Left-Behind Remind

The Find My app can notify you if you leave an item with your KINDEEP Tracker behind. If your tracker disconnects from your iOS device's Bluetooth range, you will receive an instant notification on your phone, helping you prevent loss.

Left-Behind Remind



"Keys" left behind

This item is no longer detected near you. It was last seen near gregory meola*****



Image: Notification on an iOS device indicating an item with a KINDEEP Tracker has been left behind.

Location Sharing Feature

You can share your KINDEEP Tracker's location with up to 5 additional people through the Find My app. This allows invited members to view the item's real-time location on a map and collaborate in recovery. For user privacy, all communication within the Find My network is anonymous and encrypted, and location data is not stored on the tracker itself.

Privacy Protection

The KINDEEP Bluetooth Tracker works with Apple Find My. Leveraging the Find My network, all communication data remains anonymous and encrypted for your security.



Image: Diagram illustrating the location sharing capability of the KINDEEP Tracker.

MAINTENANCE AND BATTERY REPLACEMENT

The KINDEEP Tracker Air Tag is designed for durability and ease of maintenance.

Water Resistance

The tracker features an IP67 waterproof rating, making it resistant to splashes and brief immersion. This protects the device during outdoor activities or accidental exposure to water. However, it is not recommended for prolonged submersion.

IP67 Water Resistant



Image: KINDEEP Tracker demonstrating IP67 water resistance during outdoor use.

Battery Replacement

The KINDEEP Tracker comes with a replaceable CR2032 coin cell battery, which can last up to a year. When the battery level is low, the Find My app will notify you to replace it. To replace the battery:

1. Locate the battery compartment on the back of the tracker.
2. Carefully open the compartment using a small tool or coin.
3. Remove the old CR2032 battery.
4. Insert a new CR2032 battery with the positive (+) side facing up.
5. Close the battery compartment securely.



LOCATION SHARING FEATURE

You can share items through the Find My app, allowing invited members to view the item's real-time location on a map and collaborate in recovery. The system supports sharing with up to 5 additional people (excluding yourself) and no tracking notifications will be sent when the shared item approaches others' devices, ensuring user privacy.

Image: Diagram showing the replaceable CR2032 battery inside the KINDEEP Tracker.

TROUBLESHOOTING

If you encounter issues with your KINDEEP Tracker Air Tag, try the following solutions:

- **Tracker Not Connecting:**

- Ensure Bluetooth is enabled on your iOS device.
- Make sure Location Services are turned on for the Find My app.
- Check if the tracker's battery is low or needs replacement.
- Try resetting the tracker by removing and reinserting the battery.
- Ensure your iOS device is running a compatible version of iOS.

- **Sound Not Playing:**

- Verify the tracker is within Bluetooth range of your device.
- Check the battery level.
- Ensure your phone's volume is not muted.

- **Inaccurate Location:**

- Ensure Location Services are enabled and working correctly on your iOS device.
- The accuracy of location tracking depends on the density of the Find My network in the area.

- **Notifications Not Received:**

- Check your iOS device's notification settings for the Find My app.
- Ensure "Notify When Left Behind" is enabled for your tracker in the Find My app.

SPECIFICATIONS

Feature	Detail
Model Number	BT001
Dimensions	3.78 cm (1.48 in) L x 3.78 cm (1.48 in) W x 0.84 cm (0.3 in) Th
Weight	10 g (0.35 oz)
Connectivity	Bluetooth
Bluetooth Range	Up to 200ft / 60m
Sound Level	80-100 dB
Water Resistance	IP67
Battery Type	CR2032 Coin Cell (Replaceable)
Battery Life	Up to 1 year
Compatibility	iOS devices only (Apple Find My network)



Image: Visual representation of KINDEEP Tracker dimensions and key specifications.

WARRANTY INFORMATION

KINDEEP products are manufactured with high-quality standards. This product comes with a standard manufacturer's warranty covering defects in materials and workmanship from the date of purchase. Please retain your proof of purchase for warranty claims. For specific warranty terms and conditions, refer to the product packaging or contact KINDEEP customer support.

CUSTOMER SUPPORT

For technical assistance, troubleshooting, or any inquiries regarding your KINDEEP Tracker Air Tag, please visit the official KINDEEP website or contact their customer support team. Contact information can typically be found on the product packaging or on the brand's official online store page.

Note: KINDEEP does not require any monthly fees or subscriptions for the use of these smart tags.