

DOOGEE Blade GT Rugged Phone

DOOGEE Blade GT (2025) 5G AI Rugged Phone User Manual

Model: Blade GT Rugged Phone | Brand: DOOGEE

1. INTRODUCTION

Welcome to the comprehensive user manual for your new DOOGEE Blade GT (2025) 5G AI Rugged Phone. This device is engineered for durability and high performance, featuring a dynamic LED light effect, a powerful MediaTek Dimensity 7050 processor, and advanced AI camera capabilities. This manual provides essential information to help you set up, operate, maintain, and troubleshoot your smartphone, ensuring you get the most out of its robust features.



Figure 1.1: Front and rear view of the DOOGEE Blade GT (2025) 5G AI Rugged Phone, highlighting its dynamic LED light effect and sleek design.

2. SETUP

2.1 Unboxing

Upon opening the package, ensure all components are present:

- DOOGEE Blade GT Smartphone
- Phone Case
- Type-C USB Cable
- Charger
- Thickened Protective Film

- Instruction Book (this manual)



Figure 2.1: All items included in the DOOGEE Blade GT product packaging.

2.2 SIM Card and MicroSD Card Installation

Locate the SIM card tray on the side of the device. Use the provided SIM ejector tool to open the tray. Insert your Nano-SIM card(s) and/or MicroSD card into the designated slots, ensuring correct orientation. Gently push the tray back into the phone until it clicks into place.

2.3 Initial Power-On and Charging

Press and hold the Power button until the DOOGEE logo appears. Follow the on-screen prompts to complete the initial setup, including language selection, Wi-Fi connection, and Google account setup. For optimal performance, fully charge your device before first use using the provided charger and USB cable. The phone supports 18W fast charging.

3. OPERATING YOUR DOOGEE BLADE GT

3.1 Dynamic LED Light Effects (Light Elf)

The Blade GT features an innovative "Light Elf" design with customizable LED lights on the rear. These lights provide dynamic notifications and visual enhancements.

- **Notifications:** Configure LED patterns for incoming calls, messages, and other app alerts.
- **Music Rhythm:** The magic loop stripe reacts to your music's frequency and volume, creating a synchronized light display.
- **Mood Expression:** Personalize lighting effects to match your mood (e.g., Happy, Sad, Excited, Rhythm, Love, OK).
- **Battery Alert:** Set up lighting alerts for low battery (below 20%) and charging status.
- **Customization:** Explore additional settings for timed off functions, brightness adjustment, and power-on light effects.

Dynamic Lighting Effects



Music Rhythm



Notifications

Calls 



Message 



Figure 3.1: LED notifications for calls and messages.

Dynamic Lighting Effects

ELF

Funny Expression



Battery Alert



Figure 3.2: LED effects for mood expression and battery alerts.

Your browser does not support the video tag.

Video 3.1: Demonstrates three ways to unlock the smart lighting phone, showcasing the dynamic LED effects.

3.2 Camera Features

The DOOGEE Blade GT is equipped with a 48MP AI main camera and a 20MP front camera, enhanced with smart AI tools for exceptional photo and video capture.

- **AI Main Camera:** Captures stunningly detailed images with vibrant light effects.
- **Morpho Super Night Mode:** Ensures brighter and clearer shots in low-light conditions.
- **Morpho Anti-shake Mode:** Provides stable video recording, ideal for action shots.
- **AI Functions:** Includes AI Erase (to remove distractions), AI Background Replacement, AI Digital Human, and AI Portrait for creative photo editing.
- **Video Recording:** Supports 4K Ultra-HD video recording.
- **Dual MIC Noise Reduction:** Improves voice clarity during calls and video recording by reducing ambient noise.

AI Function

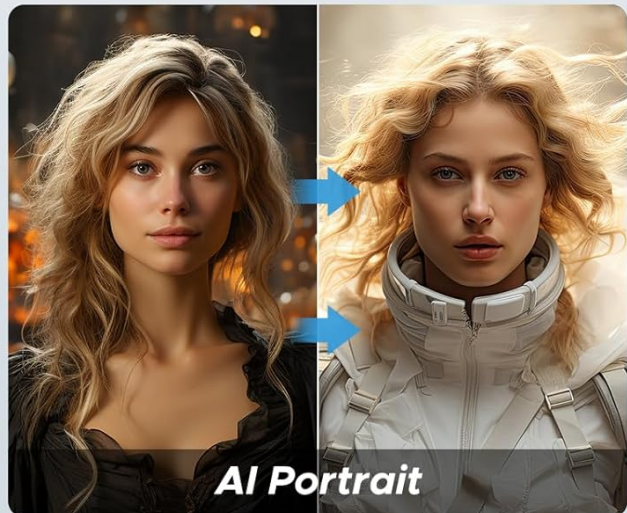
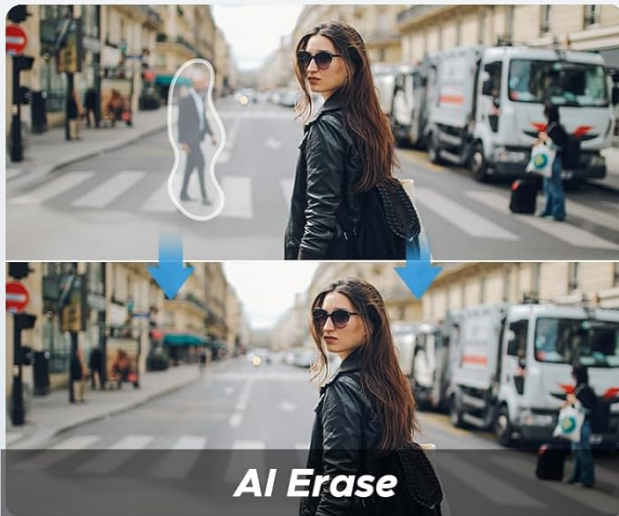
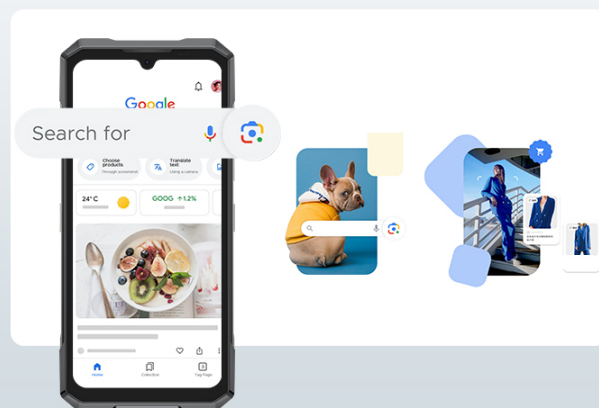


Figure 3.3: AI functions such as AI Erase and AI Background Replacement.

Google Intelligent Camera



AI Recognition

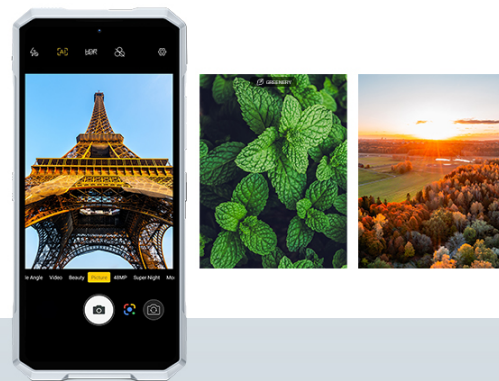


Figure 3.4: Overview of the phone's camera system.

Your browser does not support the video tag.

Video 3.2: A promotional video showcasing the DOOGEE Blade GT Rugged Phone 2025.

3.3 Display and Performance

The Blade GT features a 6.72-inch FHD+ display with a 120Hz Smart Dynamic Refresh Rate, providing a smooth and immersive visual experience. Powered by a MediaTek Dimensity 7050 Octa-Core processor and up to 32GB (12GB + 20GB extended) RAM, the phone ensures smooth multitasking and efficient performance.

MediaTek D7050 *Powerful Processor*

2.6GHZ

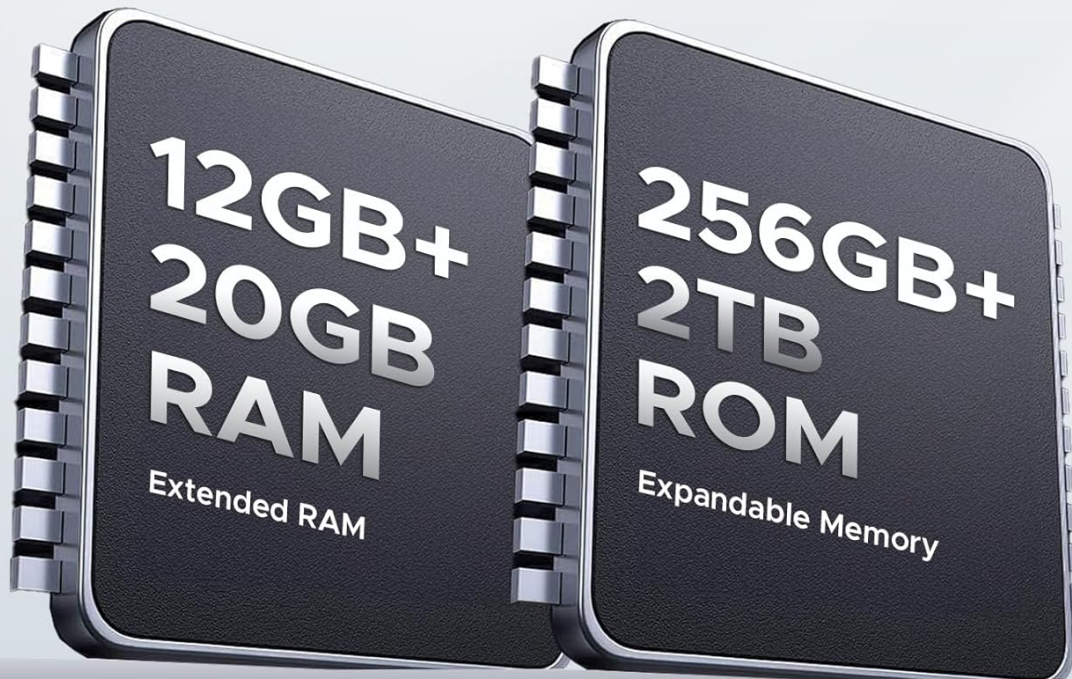
Max Main Frequency



Figure 3.5: Diagram illustrating the MediaTek D7050 processor.

12GB Basic RAM+ 256GB ROM

LPDDR5



Up to 32GB RAM
(12GB Basic RAM+20GB RAM)

256GB ROM
(2TB Expandable Memory)

Figure 3.6: Details on the phone's RAM and ROM capacity.

Your browser does not support the video tag.

Video 3.3: Highlights the 6.72-inch eye-catching and eye-protecting display of the DOOGEE Blade GT.

3.4 Connectivity and Other Functions

The DOOGEE Blade GT offers a wide range of connectivity options and smart features:

- **Network:** Supports 5G connectivity. Compatible with NR: N1/N3/N7/N8/N28/N38/N41/N77/N78/N79, FDD: 1/2/3/4/5/7/8/12/17/18/19/20/25/26/28AB/66, TDD: B34/38/39/40/41, WCDMA: B1/2/4/5/8, GSM: B2/3/5/8, EDGE/GPRS. *Note: Does not support Verizon and AT&T networks.*
- **Wi-Fi:** Equipped with Wi-Fi 6 for ultra-fast and stable internet.
- **Bluetooth:** Bluetooth 5.2 for wireless connections.
- **NFC:** For contactless payments and data transfer.
- **OTG:** Supports On-The-Go reverse charging to power other devices.
- **Navigation:** Includes Beidou, Galileo, Glonass, and GPS navigation systems.
- **Sensors:** Gravity Sensor, Distance Sensor, Light Sensor, Compass, Geomagnetic.

- **Unlock Methods:** Face Unlock and Fingerprint Unlock (side-mounted).

3.5 Android 14 OS and System Management

The phone runs on the latest Android 14 OS, offering enhanced features for system management and user experience:

- **Battery Saving Mode:** Optimize battery usage.
- **Garbage Removal:** Clean up unnecessary files to free up storage.
- **APP Freezing:** Temporarily disable apps to save resources.
- **APP Lock:** Secure your applications with a password or biometric authentication.
- **Child Mode:** Create a safe environment for children.
- **Screen Attention:** Keeps the screen on while you're looking at it.
- **Real-time Subtitle:** Provides live captions for media.
- **Glove Mode:** Enhances touch sensitivity for use with gloves.
- **Game Mode:** Optimizes performance for gaming.
- **Super Clipboard:** Advanced clipboard features.



Figure 3.7: Android 14 OS system management features.



Figure 3.8: More advanced OS features for daily use.

4. MAINTENANCE AND DURABILITY

4.1 Rugged Design

The DOOGEE Blade GT is built to withstand harsh environments, featuring an ultra-thin 10.5mm body while meeting rigorous durability standards:

- **IP68/IP69K Rated:** Provides excellent resistance to dust and water immersion.
- **MIL-STD-810H Certified:** Ensures resistance to drops, shocks, and extreme temperatures.
- **USB Waterproof Rubber Sleeve:** Protects the charging port from water and dust.

Incomparable Portable Phone

Weight
260g

Thickness
10.5mm



Figure 4.1: The ultra-thin 10.5mm profile of the DOOGEE Blade GT.

Packaging included:

- Cellphone*1
- Phone Case*1
- Type C USB Cable*1
- Charger*1
- Thickened Protective Film*1
- Instruction Book*1



Figure 4.2: Comprehensive protection features of the DOOGEE Blade GT.

Your browser does not support the video tag.

Video 4.1: Demonstrates the IP68 waterproof capabilities of the DOOGEE Blade GT.

4.2 Cleaning and Care

To maintain your phone's condition, wipe it regularly with a soft, damp cloth. Avoid using harsh chemicals or abrasive materials. Ensure all port covers are securely closed to maintain water and dust resistance, especially before exposing the phone to liquids or dusty environments.

4.3 Software Updates

Periodically check for software updates to ensure your device has the latest features, security patches, and performance improvements. You can usually find this option in the phone's Settings menu under "System" or "About phone".

5. TROUBLESHOOTING

This section addresses common issues you might encounter with your DOOGEE Blade GT. If you experience problems not listed here, please refer to the Warranty and Support section for further assistance.

Problem	Possible Solution
Phone does not power on.	Ensure the battery is charged. Connect the phone to the charger for at least 10 minutes before attempting to power on again. If unresponsive, try a forced restart by holding the Power button for 10-15 seconds.
Poor battery life.	Adjust screen brightness, close background apps, disable unnecessary features like GPS or Bluetooth when not in use. Utilize the Battery Saving Mode in settings. Note that extensive use of dynamic LED light effects can impact battery duration.
Network connectivity issues (calls/data).	Check if your SIM card is properly inserted. Verify that your carrier is supported by the device (DOOGEE Blade GT does not support Verizon and AT&T networks). Restart the phone. Check network settings (APN).
Apps are slow or crashing.	Clear app cache and data (Settings > Apps). Use the Garbage Removal feature. Consider using APP Freezing for less frequently used applications. Ensure sufficient free storage space.

Problem	Possible Solution
LED lights not working as expected.	Check the Light Elf settings in your phone's menu to ensure desired effects are enabled and configured correctly. Verify brightness and timed off functions.

6. TECHNICAL SPECIFICATIONS

Detailed specifications for the DOOGEE Blade GT (2025) 5G AI Rugged Phone:

Feature	Specification
Model Name	Blade GT Rugged Phone
Operating System	Android 14
CPU Model	MediaTek Dimensity 7050 Octa Core (2.6GHz Max Main Frequency)
RAM	12 GB (expandable up to 32GB with 20GB extended RAM)
Internal Storage	256 GB (expandable up to 2TB with MicroSD card)
Screen Size	6.72 Inches FHD+
Resolution	1920 x 1080
Refresh Rate	120 Hz Smart Dynamic Refresh Rate
Touch Sampling Rate	240 Hz
Main Camera	48 MP AI Main Camera
Front Camera	20 MP
Battery Capacity	5500 mAh
Charging	18W Fast Charging
Dimensions	7.03 x 3.29 x 0.41 inches (178.5mm x 83.5mm x 10.5mm)
Weight	9.2 ounces (262 grams)
Durability	IP68, IP69K, MIL-STD-810H
Connectivity	5G, Wi-Fi 6, Bluetooth 5.2, NFC, OTG
Audio Jack	No headphone jack
Color	SILVER

7. WARRANTY AND SUPPORT

DOOGEE is committed to providing quality products and excellent customer service. Your DOOGEE Blade GT comes with the following support:

- 30-Day Money Back Guarantee:** If you are not satisfied with your purchase, you may return it within 30 days for a full refund.

- **2-Year Limited Warranty:** Your device is covered by a 2-year limited warranty against manufacturing defects.
- **24/7 Online Support:** Access to 1-on-1 online support for any queries or issues you may encounter.

For support, please visit the official DOOGEE website or contact their customer service through the provided channels in your product packaging.

© 2025 DOOGEE. All rights reserved.
This manual is subject to change without prior notice.