

Outdoor Tech RM

Outdoor Tech Range Bluetooth Speaker User Manual

Model: RM

1. PRODUCT OVERVIEW

The Outdoor Tech Range Bluetooth Speaker delivers 360-degree sound with Hi-Fi audio in a durable, portable design. It is IP67-rated, making it waterproof, dustproof, and shockproof, suitable for various environments. The speaker also features LED lighting and a built-in power bank for charging other devices.



Image 1.1: Front view of the Outdoor Tech Range Bluetooth Speaker, showcasing its polygonal design and illuminated green LED base.



Image 1.2: Diagram illustrating the dimensions of the Outdoor Tech Range Bluetooth Speaker: 12.4 inches deep, 5.5 inches wide, and 7.6 inches high.

2. PACKAGE CONTENTS

Ensure all items are present before setup:

- Outdoor Tech Range Bluetooth Speaker
- Charging Cable (USB-C)
- User Manual

3. SETUP

3.1 Charging the Speaker

Before first use, fully charge the speaker. The charging port is located under a protective flap on the side of the device.

1. Open the silicone flap covering the USB-C charging port.
2. Connect the provided USB-C cable to the speaker's 'IN' port.

3. Connect the other end of the USB-C cable to a compatible USB power adapter (not included).
4. The LED indicator will show charging status. A full charge takes approximately 4 hours.



Image 3.1: Close-up view of the USB-C charging port, protected by a silicone flap, on the side of the speaker.

3.2 Powering On/Off

Locate the power button on the control panel.

- To power on: Press and hold the power button for 2-3 seconds until the LED indicator lights up and an audible tone is heard.
- To power off: Press and hold the power button for 2-3 seconds until the LED indicator turns off and an audible tone is heard.

3.3 Bluetooth Pairing

The speaker will automatically enter pairing mode when powered on for the first time or if no device is connected.

1. Ensure the speaker is powered on and within 60 feet of your device.
2. On your smartphone, tablet, or other Bluetooth-enabled device, navigate to the Bluetooth settings.
3. Search for available devices and select **"Outdoor Tech Range"** from the list.

4. Once connected, the speaker will emit a confirmation tone, and the LED indicator will change to a solid blue.



Image 3.2: Close-up of the speaker's control panel, showing buttons for volume, play/pause, and mode selection.

4. OPERATING INSTRUCTIONS

4.1 Basic Controls

- **Volume Up:** Press the '+' button.
- **Volume Down:** Press the '-' button.
- **Play/Pause:** Press the central play/pause button.
- **Next Track:** Press and hold the '+' button.
- **Previous Track:** Press and hold the '-' button.

4.2 Call Functionality

The speaker includes a built-in microphone for hands-free calls.

- **Answer Call:** Press the play/pause button once.
- **End Call:** Press the play/pause button once during a call.
- **Reject Call:** Press and hold the play/pause button.
- **Activate Voice Assistant (Siri/Google Assistant):** Double-press the play/pause button.

4.3 Indoor/Outdoor Modes

The Range speaker features optimized sound profiles for different environments.

- To switch between Indoor and Outdoor modes, press the mode button (often indicated by an icon). The speaker will provide an audible confirmation of the selected mode.

4.4 LED Lighting

The speaker's base features integrated LED lighting.

- To cycle through lighting modes or turn off the LEDs, press the light button (often indicated by a lightbulb icon).

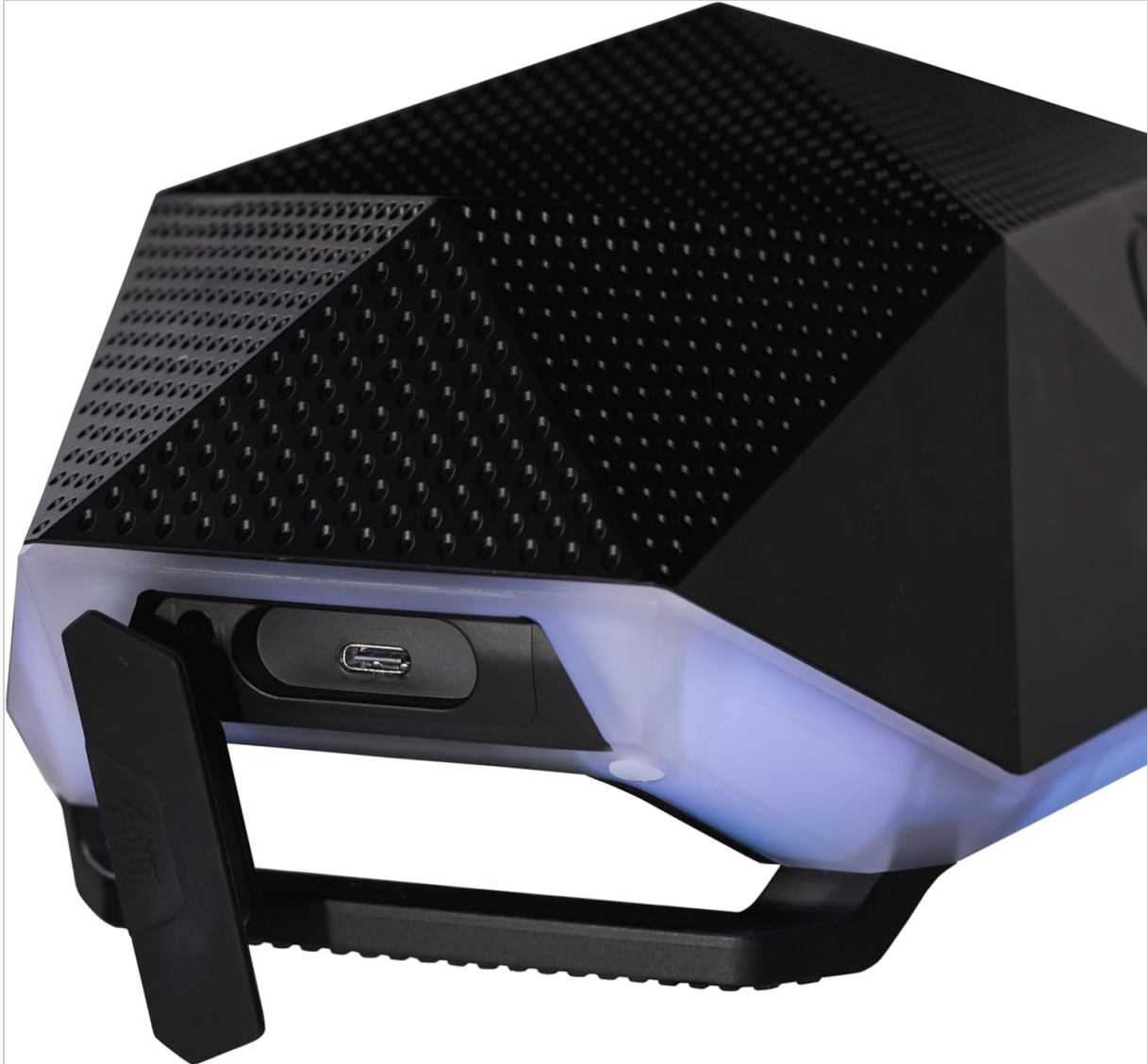


Image 4.1: The speaker displaying its red LED lighting, suitable for creating ambiance or providing low-light visibility.

4.5 Charging External Devices (Power Bank Function)

The speaker can act as a power bank to charge other devices.

1. Open the silicone flap covering the USB-C ports.
2. Connect your device's charging cable to the speaker's 'OUT' USB-C port.
3. Charging will begin automatically.

5. MAINTENANCE

5.1 Cleaning

To maintain the speaker's IP67 rating and appearance:

- Ensure all port covers are securely closed before cleaning.
- Wipe the speaker with a soft, damp cloth.

- Do not use abrasive cleaners, solvents, or harsh chemicals.
- Rinse with fresh water after exposure to saltwater or chlorinated water, then dry thoroughly.

5.2 Storage

- Store the speaker in a cool, dry place away from direct sunlight and extreme temperatures.
- For long-term storage, charge the battery to approximately 50% every few months to preserve battery life.

6. TROUBLESHOOTING

If you encounter issues with your Outdoor Tech Range speaker, refer to the following common solutions:

Problem	Possible Solution
Speaker does not power on	Ensure the battery is charged. Connect the speaker to a power source using the provided USB-C cable.
Cannot pair via Bluetooth	Ensure the speaker is in pairing mode (LED flashing blue). Turn off and on your device's Bluetooth. Move the speaker closer to your device (within 60 feet). Forget the device from your Bluetooth list and try pairing again.
No sound or low volume	Increase the volume on both the speaker and your connected device. Ensure the speaker is properly paired. Check if the audio source is playing.
Charging issues	Ensure the USB-C cable is securely connected to the 'IN' port. Try a different USB power adapter or cable. Verify the power source is active.

7. SPECIFICATIONS

Feature	Detail
Model Name	Range
Dimensions (D x W x H)	12.4" x 5.5" x 7.6"
Item Weight	3.6 Pounds
Waterproof Rating	IP67
Bluetooth Version	5.0
Wireless Range	Up to 60 feet
Playtime	Up to 10 hours
Standby Time	Up to 75 hours
Charging Time	Approximately 4 hours
Speaker Output Power	30 Watts

Feature	Detail
Frequency Response	20000 Hz
Material	Acrylonitrile Butadiene Styrene (ABS)
Control Method	Voice, Button
Power Source	Battery Powered

8. WARRANTY INFORMATION

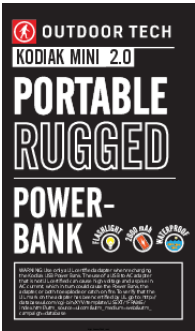
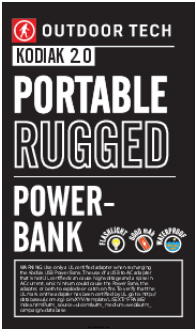
The Outdoor Tech Range Bluetooth Speaker comes with a **Limited Warranty**. Please refer to the warranty card included in your product packaging or visit the official Outdoor Tech website for detailed terms and conditions regarding warranty coverage, duration, and claims procedures.

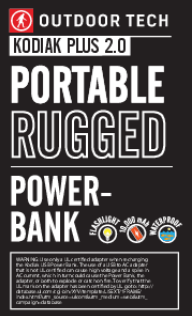



9. SUPPORT

For further assistance, technical support, or customer service inquiries, please visit the official Outdoor Tech website or contact their customer support team directly. Contact information can typically be found on the brand's website or in your product documentation.

© 2024 Outdoor Tech. All rights reserved.

Related Documents - RM

	<p>Outdoor Tech Kodiak Mini 2.0 Portable Rugged Power Bank User Manual</p> <p>User manual for the Outdoor Tech Kodiak Mini 2.0 portable rugged power bank, detailing its anatomy, charging instructions, features like waterproofing and flashlight, care and maintenance guidelines, and technical specifications.</p>
	<p>Outdoor Tech Kodiak 2.0 Portable Rugged Power Bank User Manual & Specifications</p> <p>User manual and specifications for the Outdoor Tech Kodiak 2.0 Portable Rugged Power Bank. Learn about its features, charging, maintenance, and technical details.</p>

	<p>Outdoor Tech Kodiak Plus 2.0 Portable Rugged Power Bank User Manual</p> <p>User manual and specifications for the Outdoor Tech Kodiak Plus 2.0 portable rugged power bank, featuring 10,000 mAh capacity, flashlight, waterproof design, and dual USB output ports.</p>
	<p>RM SPQ 780 E Electric Range with Cabinet - Instruction Manual</p> <p>Comprehensive instruction manual for the RM SPQ 780 E electric range with cabinet, covering installation, operation, safety, and maintenance. Designed for professional use.</p>
	<p>Outdoor Tech Buckshot Rugged Wireless Speaker User Manual</p> <p>Comprehensive user manual for the Outdoor Tech Buckshot Rugged Wireless Speaker. Learn about setup, pairing, functions, troubleshooting, and specifications.</p>
	<p>Outdoor Tech Orcas Active Wireless Earbuds User Manual</p> <p>Comprehensive user manual for the Outdoor Tech Orcas Active Wireless Earbuds, covering setup, features, specifications, troubleshooting, and care instructions.</p>