

## Hulkman Alpha Pro

# Hulkman Alpha Pro 1500A Jump Starter Instruction Manual

Model: H33

Brand: Hulkman

## INTRODUCTION

The Hulkman Alpha Pro 1500A Jump Starter is a high-capacity portable device designed to jumpstart vehicles with dead batteries. Featuring 1500A peak current, PD65W fast charging, and a 3.3-inch smart display, it provides reliable power for engines up to 7.5L Gas and 4.5L Diesel. Built with 10 layers of safety protection, this robust unit ensures safe and efficient operation in various conditions.

# Start Dead Batteries Different



Image: The Hulkman Alpha Pro 1500A Jump Starter showing a 100% charge on its smart display, connected to a car battery with red and black clamps.

## WHAT'S IN THE BOX

- Alpha Pro 1500A Jump Starter
- 12V Battery Clamps
- DC 12V Cigarette Lighter Socket Adapter
- USB-C to USB-C Cable
- User Manual
- Soft Carrying Pouch

# What's in the Box



Image: All included items: the jump starter unit, battery clamps, DC adapter, USB-C cable, manual, and a soft carrying pouch.

## SETUP

### Initial Charging

Before first use, fully charge your Hulkman Alpha Pro. The PD65W bidirectional port allows for rapid charging.

1. Connect the provided USB-C to USB-C cable to the 'IN/OUT' port on the jump starter.
2. Connect the other end of the USB-C cable to a compatible PD65W charger (not included).
3. The 3.3-inch smart display will show the charging progress. A full charge from 0% to 100% takes approximately 50 minutes.

## Boost Start for Dead Batteries

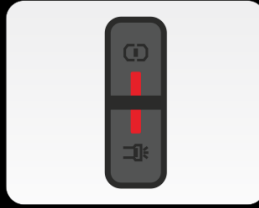
### 1 Connect

Plug the clamps into the booster, then attach them to the car battery.



### 2 Press

Press power and LED button simultaneously for 2-3s to start forced output.



### 3 Ready

When the screen displays "READY".



### 4 Go

Start your car engine.

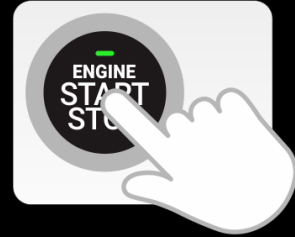


Image: The jump starter unit connected to a wall charger via a USB-C cable, displaying '100%' charge and 'SPEED' indicator.

## OPERATING INSTRUCTIONS

### Connecting the Clamps

Ensure the jump starter is adequately charged before use. Always connect the clamps correctly to avoid damage.

1. Open the protective cap on the jump starter to reveal the clamp port.
2. Plug the smart battery clamps firmly into the jump starter's port.
3. Connect the **red (+) clamp** to the positive terminal of the vehicle battery.
4. Connect the **black (-) clamp** to the negative terminal of the vehicle battery.

# Premium Heavy-Duty Clamps

Built for safety, strength & comfort.

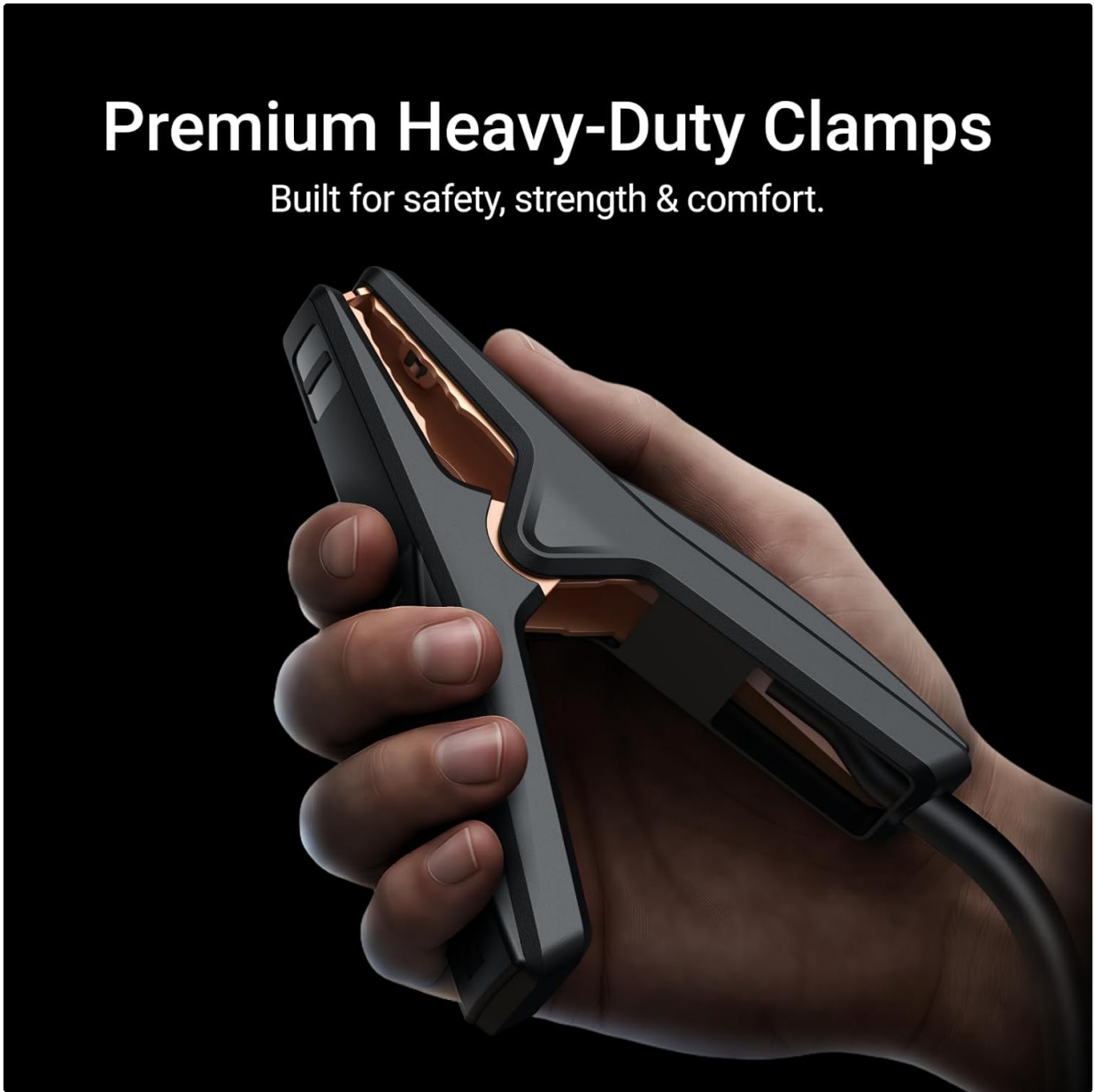


Image: A hand holding the robust red and black battery clamps, highlighting their heavy-duty construction.

## Normal Start Mode

Use this mode for batteries that are low but not completely dead.

1. Connect the clamps to the vehicle battery as described above.
2. The smart display will show 'READY' when the connection is correct and safe.
3. Start your car engine.

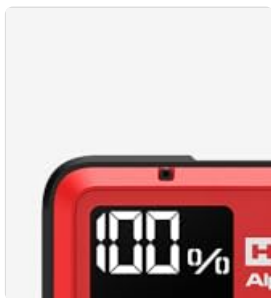


Image: A visual guide illustrating the three steps for a normal jump start: 1. Connect the clamps to the booster and car battery. 2. Wait for the 'READY' indicator on the display. 3. Start the car engine.

## Boost Start for Dead Batteries

Use this mode for completely dead batteries that require a forced start.

1. Connect the clamps to the vehicle battery as described above.
2. Press and hold the Power button and LED button simultaneously for 2-3 seconds to activate forced output.
3. The smart display will show 'READY'.
4. Start your car engine.



Image: A visual guide illustrating the four steps for a boost jump start for dead batteries: 1. Connect the clamps. 2. Press power and LED buttons simultaneously for 2-3 seconds. 3. Wait for the 'READY' indicator. 4. Start the car engine.

### Smart Display

The 3.3-inch smart display provides real-time information on power level, status, and error codes, ensuring you are always aware of the device's condition.

# See It, Start It

With a 3.3-inch Smart Display.



Image: The smart display of the jump starter showing 100% battery, a charging icon, and the 'READY' status in green.

## Flashlight Modes

The integrated flashlight offers multiple modes for visibility and emergencies.

- **50% Brightness:** Standard illumination.
- **100% Brightness:** Maximum illumination.
- **BLINK:** Flashing light for general signaling.
- **SOS:** International distress signal.
- **STROBE:** Rapid flashing for high visibility.



Image: The top of the jump starter unit with light emanating from the front, illustrating the different light modes available.



## Charging External Devices

The jump starter can also function as a power bank for various electronic devices.

- **USB-C (PD65W):** For fast charging laptops, drones, and other compatible devices.
- **USB-A:** For charging smartphones, tablets, and other USB-powered gadgets.
- **DC 12V Output:** Use the provided DC 12V Cigarette Lighter Socket Adapter to power 12V accessories like tire inflators or portable fridges.

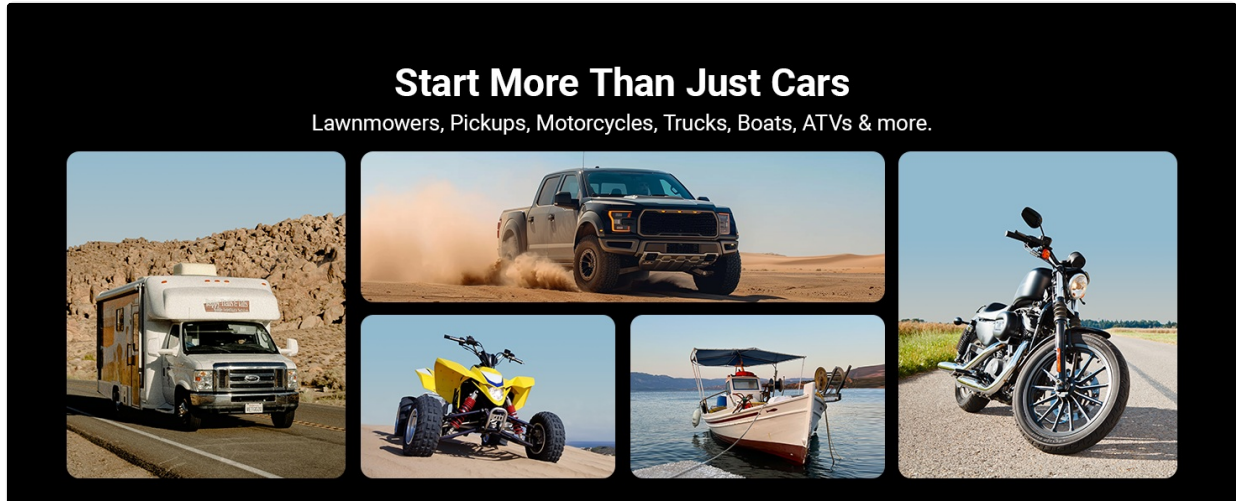


Image: The jump starter connected to a laptop via a USB-C cable, demonstrating its capability to charge external devices.

## SAFETY INFORMATION

The Hulkman Alpha Pro is equipped with 10 layers of built-in safety protection to ensure user and vehicle safety.

- **Spark-Proof Protection:** Prevents sparks during connection.
- **Reverse-Polarity Protection:** Alerts and prevents damage from incorrect clamp connection.
- **Short-Circuit Protection:** Safeguards against short circuits.
- **Over-Current Protection:** Protects against excessive current flow.
- **Over-Charge Protection:** Prevents overcharging of the internal battery.
- **Low-Temperature Protection:** Ensures safe operation in cold conditions.
- **High-Temperature Protection:** Prevents overheating.
- **Over-Voltage Protection:** Protects against voltage surges.
- **Overload Protection:** Prevents damage from excessive load.
- **Error-Proof Clamp Design:** Designed for intuitive and safe connection.



# Compact Size, Easy to Carry

Includes premium storage pouch.



Image: The smart display showing safety icons and the clamps connected to a battery, emphasizing the 10-layer safety protection.

## MAINTENANCE

To ensure optimal performance and longevity of your Hulkman Alpha Pro, follow these maintenance guidelines:

- **Regular Charging:** It is recommended to charge the unit every 3 months to maintain battery health, even when not in use.
- **Storage:** Store the jump starter in a cool, dry place, away from direct sunlight and extreme temperatures. Use the provided soft carrying pouch for protection.
- **Cleaning:** Wipe the unit with a dry, soft cloth. Do not use harsh chemicals or abrasive materials.

## TROUBLESHOOTING

Refer to the smart display for error codes and follow the recommended solutions:

Error Code	Problem	Solution
------------	---------	----------

Error Code	Problem	Solution
⚠	The jumper clamps are connected incorrectly.	Reverse them to ensure the correct connection.
	The car battery is weak or nearly dead.	Activate the Force Start Function by pressing both the Power and LED buttons simultaneously for 2-3 seconds.
	The jump starter is inoperable due to extreme temperatures.	Wait for the jump starter to return to its optimal operating temperature range (0°C to 40°C / 32°F to 104°F).
⚡	The jump starter is locked after frequent short-term use.	It will automatically unlock after 10 minutes.

## SPECIFICATIONS

Feature	Specification
Model	Alpha Pro (H33)
Peak Output Current	1500 Amps
Battery Capacity	44.4Wh (Lithium Polymer)
Engine Compatibility	Up to 7.5L Gas / 4.5L Diesel
Fast Charging (PD)	PD65W In & Out (0-100% in ~50 mins)
Display	3.3-inch Smart Display
Safety Protection	10-Layer (Spark-proof, Reverse-polarity, Short-circuit, etc.)
Water Resistance	IP65-rated shell
Weight	3 Pounds (approx. 1.36 kg)
Dimensions	9.06"D x 4.06"W x 1.82"H
Vehicle Service Type	ATV, Motorcycle, Passenger Car, RV, Tractor, Truck, UTV, Van, Watercraft

## WARRANTY AND SUPPORT

The Hulkman Alpha Pro 1500A Jump Starter includes a 2-year support period. This can be extended to 3 years after product registration. For further assistance or warranty claims, please refer to the contact information provided in your user manual or visit the official Hulkman website.