

manuals.plus /

› [AOLON](#) /

› [AOLON GTR Ultra Smart Watch User Manual](#)

## AOLON GTR Ultra

# AOLON GTR Ultra Smart Watch User Manual

Model: GTR Ultra | Brand: AOLON

## INTRODUCTION

The AOLON GTR Ultra smart watch is designed to seamlessly integrate into your daily life, offering advanced features for communication, health monitoring, and fitness tracking. Its 1.46-inch IPS HD touchscreen provides a clear and vibrant display for all your essential information.

This manual provides detailed instructions on how to set up, operate, and maintain your AOLON GTR Ultra Smart Watch to ensure optimal performance and longevity.

## WHAT'S IN THE BOX

- AOLON GTR Ultra Smart Watch
- Charging Cable
- User Manual
- Watch Band



Image: The AOLON GTR Ultra Smart Watch, showcasing its round display and silicone strap, alongside its charging cable and user manual.

## SETUP

### 1. Charging the Device

Before first use, fully charge your AOLON GTR Ultra Smart Watch. Connect the provided charging cable to the charging port on the back of the watch and plug the USB end into a power adapter (not included) or a computer's USB port. A full charge typically takes approximately 2 hours. Once fully charged, the watch can provide 3-7 days of continuous use, depending on usage habits, and up to 30 days of standby time.

## Ultra Long Battery Life

Big battery, say goodbye to range anxiety, 230mAh high-capacity lithium polymer battery

**2 Hour** Charging Time 2 Hours

**7 Day** Use time about 7 days

**30 Day** Standby Time



Image: Illustration showing the watch connected to its magnetic charging cable, highlighting the charging process and battery life.

## 2. App Installation and Pairing

To unlock the full potential of your smart watch, download and install the "Aolon Fit" or "GloryFit" application on your smartphone. The app is compatible with both iOS (9.0 or above) and Android (6.0 or above) devices.

1. Scan the QR code provided in the user manual or search for "Aolon Fit" or "GloryFit" in your device's app store (Apple App Store for iOS, Google Play Store for Android).
2. Ensure Bluetooth is enabled on your smartphone.
3. Open the "Aolon Fit" or "GloryFit" app and navigate to the "Add Device" section.
4. The app will search for available devices. Select "Aolon GTR Ultra" from the list to initiate the pairing process.
5. Follow the on-screen prompts to complete the pairing.

## More Practical Functions

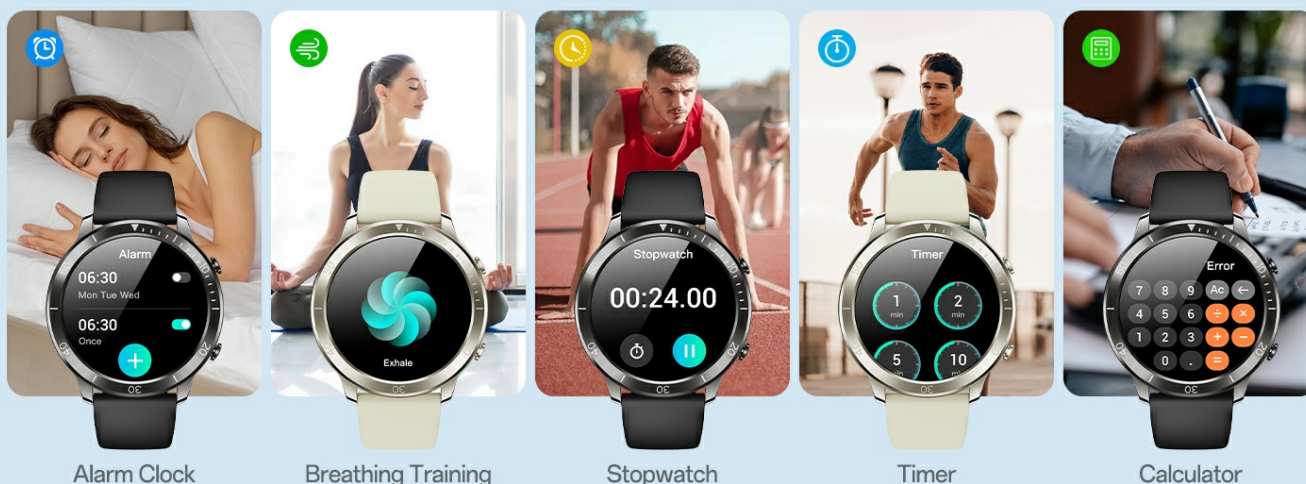


Image: Visual guide demonstrating the steps to connect the smart watch to your smartphone via the "GloryFit" or "Aolon Fit" application, including app store icons, Bluetooth settings, and device selection.

## OPERATING YOUR SMART WATCH

### Display and Navigation

The AOLON GTR Ultra features a 1.46-inch IPS HD touchscreen with a 360\*360 resolution, providing clear visuals. Navigate through menus and functions by swiping across the screen and tapping icons. The watch also includes physical buttons for easy operation.



# AOLON GTR ULTRA SMART WATCH



Image: Close-up of the GTR Ultra Smart Watch display, highlighting its 1.46-inch IPS screen, heart rate monitoring, and sports modes icons.

## Making and Answering Calls

Stay connected with Bluetooth calling directly from your wrist. The watch is equipped with a microphone and speaker, allowing you to make and receive calls effortlessly. You can also add up to 70 contacts through the app for quick dialing and view call logs.

# Menstrual Health Reminder

Comprehensive care for women's health



Image: Depicts a user making a call from the smart watch, illustrating the Bluetooth call function with icons for dialing, contacts, and incoming calls.

## Receiving Notifications

Receive real-time notifications from your smartphone directly on your watch. This includes text messages, calls, and alerts from various applications such as Facebook, WhatsApp, Instagram, Twitter, and TikTok. Simply lift your wrist to view incoming alerts.

## Intelligent Voice Assistant

Quickly wake up the AI voice assistant, such as making calls, checking weather forecasts, setting alarms, etc.



Image: A hand wearing the smart watch displaying various app notifications, emphasizing the intelligent notification reminder feature.

## Health Monitoring

The AOLON GTR Ultra provides comprehensive health tracking features:

- **Heart Rate Monitoring:** Continuous 24-hour heart rate tracking helps you monitor your heart health and detect any irregularities.
- **Blood Oxygen Measurement (SpO2):** Measure your blood oxygen levels anytime to ensure your body is in optimal condition, especially if you feel dizzy or have difficulty breathing.
- **Sleep Analysis:** Automatically monitors your sleep status, providing detailed analysis of light, deep, and REM sleep stages through the "Aolon Fit" or "GloryFit" App.
- **Women's Health Tracking:** Offers comprehensive care with features for tracking menstrual cycles and fertile windows.





Image: A person cycling with the smart watch displaying heart rate data, illustrating the 24/7 heart rate monitoring feature.



Image: A person sleeping with the smart watch on, showing the sleep monitoring interface with sleep duration and stages.



Image: A woman using the smart watch, which displays a calendar interface for menstrual health reminders, indicating comprehensive care for women's health.

Sport Modes and Activity Tracking

With over 100 sports modes, the AOLON GTR Ultra accurately tracks your steps, calories burned, and activity distances

for a wide range of exercises. This fitness watch provides detailed data to help you optimize your workouts and achieve your fitness goals.



Image: Displays various sports icons and watch faces showing activity data for walking, running, and cycling, illustrating the 100+ sports modes.

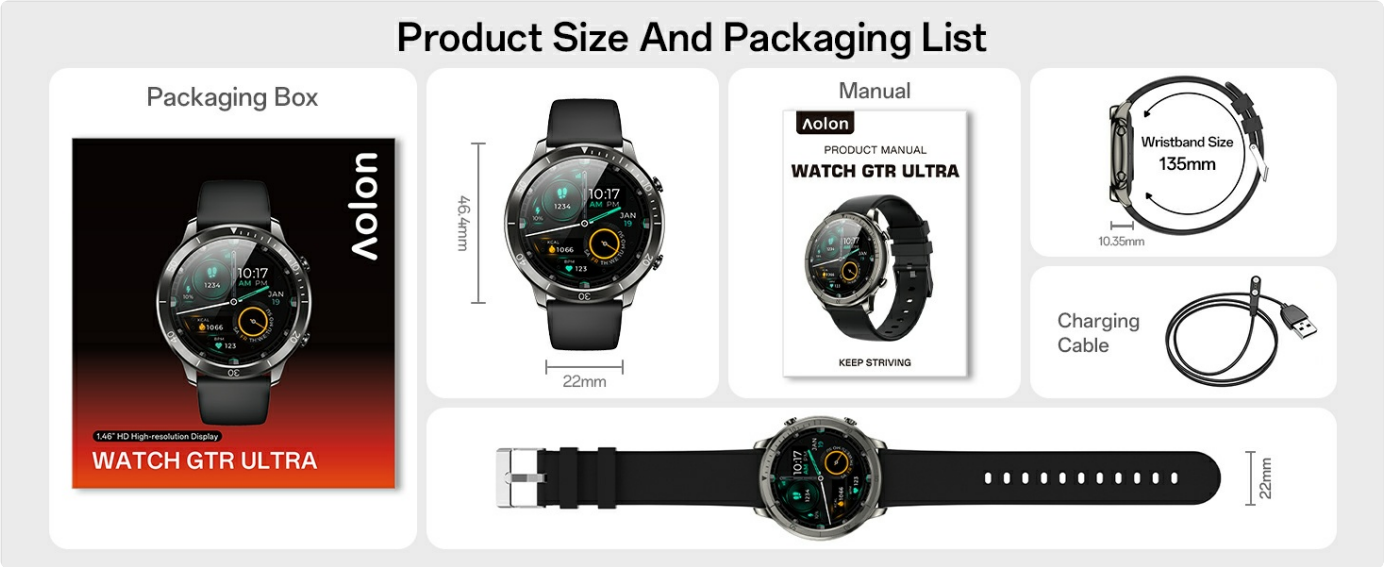


Image: A person hiking with the smart watch displaying various activity metrics like time, calories, distance, and heart rate, indicating all-day activity tracking.

Other Practical Functions

Your AOLON GTR Ultra Smart Watch offers a variety of additional features to enhance your daily life:

- **Intelligent Voice Assistant:** Quickly wake up the AI voice assistant for tasks like making calls, checking weather forecasts, or setting alarms.
- **Music Control:** Control music playback on your smartphone directly from your watch.
- **Camera Control:** Use your watch as a remote shutter for your phone's camera.
- **Weather Forecast:** Get real-time weather updates on your wrist.
- **Find Your Phone:** Locate your misplaced phone by triggering an alarm from your watch.
- **Alarm Clock:** Set multiple alarms for reminders.
- **Breathing Training:** Guided breathing exercises for relaxation.
- **Stopwatch & Timer:** Essential tools for timing activities.
- **Calculator:** Perform basic calculations on the go.



- **Sedentary Reminder:** Get alerts to move after periods of inactivity.



Image: The smart watch displaying a voice assistant interface, with examples of commands like playing music, setting alarms, and checking weather.

## Connect the Smart Watch Via APP GloryFit "Aolon GTR Ultra"

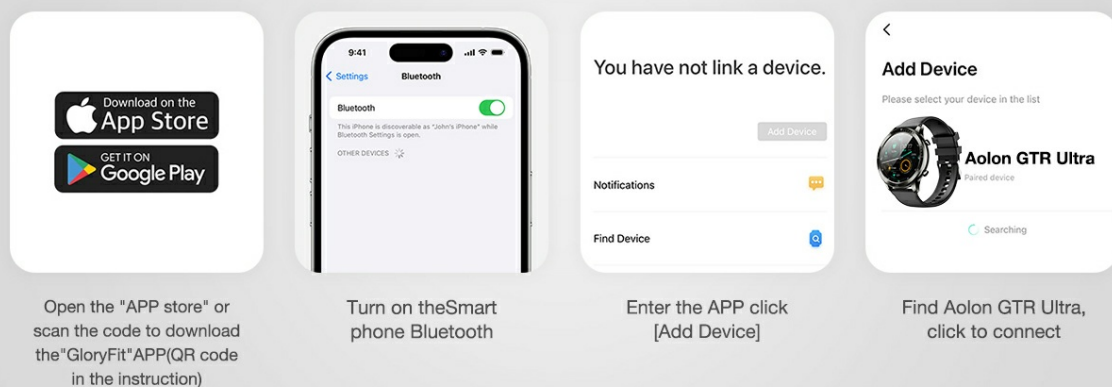


Image: A collage of images showing the watch's camera control, weather forecast, music control, and find phone features.

## 24/7 Heart Rate Monitoring

When you exercise, if you feel uncomfortable in your heart, you can monitor your heart rate at any time to prevent arrhythmia or acute heart disease.



Image: A collage of images showing the watch's alarm clock, breathing training, stopwatch, timer, and calculator features.



## Customization

Personalize your watch with over 150 customized personality dials available in the app. You can also upload your own photos to create custom watch faces.



Image: A smartphone screen displaying various watch face options and a custom photo dial, demonstrating the 150+ customizable personality dials.

## MAINTENANCE

### Water Resistance

The AOLON GTR Ultra Smart Watch is IP67 waterproof, meaning it is resistant to splashes, sweat, and rain. It can be worn during daily activities like washing hands or light exercise. However, it is not recommended for prolonged submersion, hot water, or high-pressure water activities like showering or diving.



Image: The smart watch being splashed with water, illustrating its IP67 daily waterproof capabilities against rainwater, sweating, and cleaning.

### Cleaning and Care

To maintain your watch's appearance and functionality, regularly clean the screen and strap with a soft, dry cloth. Avoid using harsh chemicals or abrasive materials. Ensure the charging contacts are clean and dry before charging.



Image: Close-up of the watch strap, highlighting its skin-friendly silicone material and easy disassembly for cleaning or replacement.

## TROUBLESHOOTING

Issue	Possible Solution
Watch not connecting to phone.	Ensure Bluetooth is on for both devices. Open the "Aolon Fit" or "GloryFit" app to re-establish connection, as some functions require the app to be active. Restart both the watch and phone.
Notifications not appearing.	Check app notification permissions on your phone. Ensure notifications are enabled within the "Aolon Fit" or "GloryFit" app settings. Confirm the watch is properly paired.
Inaccurate health data.	Ensure the watch is worn snugly on your wrist, not too loose or too tight. Clean the sensor on the back of the watch. Note that smartwatches are not medical devices and data is for reference only.
Short battery life.	Reduce screen brightness, limit continuous heart rate monitoring, and turn off unnecessary notifications. Ensure the watch is fully charged.

## SPECIFICATIONS

- **Model:** GTR Ultra
- **Screen Size:** 1.46 Inches IPS HD Touchscreen
- **Resolution:** 360\*360
- **Body Material:** All-metal alloy body with Zinc Alloy Face Ring
- **Strap Material:** Skin-friendly Silicone
- **Battery Capacity:** 210 mAh Lithium Polymer
- **Charging Time:** Approximately 2 hours
- **Usage Time:** 3-7 days (typical use)
- **Standby Time:** Up to 30 days
- **Waterproof Rating:** IP67
- **Connectivity:** Bluetooth
- **Operating System Compatibility:** Android 6.0 or Above, iOS 9.0 or Above
- **Memory Storage Capacity:** 128 MB
- **Item Weight:** 55 Grams (1.94 ounces)
- **Dimensions (Package):** 6.38 x 3.86 x 0.87 inches



## Blood Oxygen Monitoring

When you feel dizzy or have difficulty breathing, you can measure your blood oxygen level anytime and anywhere to regulate your body and keep it in optimal condition.



Image: An infographic summarizing key specifications of the AOLON GTR Ultra Smart Watch, including screen size, resolution, battery, and waterproof rating.

## WARRANTY AND SUPPORT

AOLON provides a 2-year after-sales service for the GTR Ultra Smart Watch. If you have any questions about the product or are not satisfied, please contact the seller directly through your order details. We aim to reply within 24 hours to address your concerns.

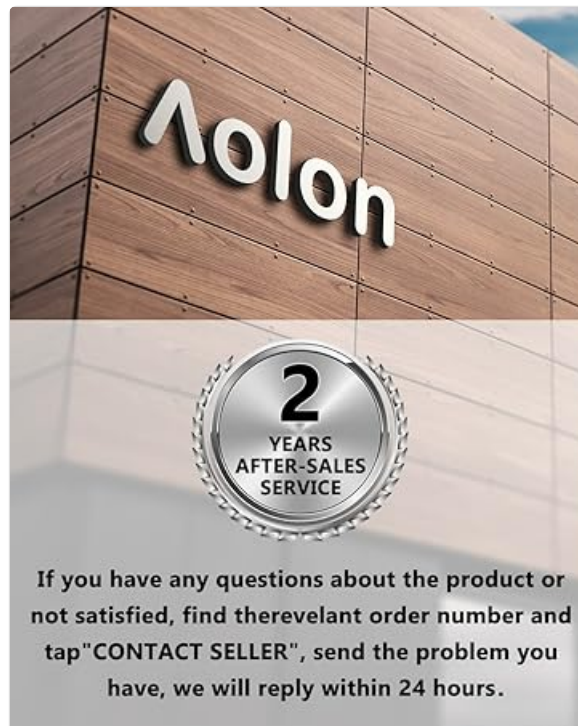




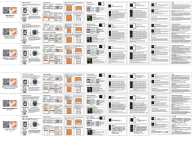



Image: A graphic indicating "2 Years After-Sales Service" and instructions on how to contact the seller for support.

## OFFICIAL PRODUCT VIDEO

Your browser does not support the video tag.

Video: An official product video showcasing the 1.46-inch ultra-thin metal body of the AOLON GTR Ultra Smart Watch for men and women, highlighting its features and design.

## Related Documents - GTR Ultra

 <p><b>PRODUCT MANUAL</b> HUAFIT WATCH GTS</p>	<p><a href="#">HUAFIT GTS Smartwatch - aolon BK32886 User Manual</a></p> <p>User manual for the HUAFIT GTS Smartwatch by aolon (model BK32886). Features include 30-day battery life, IP67 waterproofing, heart rate, and blood oxygen monitoring.</p>
 <p><b>Huafit Watch GTR Mini</b> PRODUCT MANUAL</p>	<p><a href="#">aolon GTRmini Smartwatch User Manual - Setup, Features, and Specifications</a></p> <p>Comprehensive user manual for the aolon GTRmini HD Smartwatch (Model AB5681). This guide covers device setup, smartphone pairing via the Huafit app, detailed feature explanations for sports tracking, health monitoring, notifications, and technical specifications. Compatible with Android and iOS devices.</p>
	<p><a href="#">aolon HS5 Smartwatch: Features and Components Overview</a></p> <p>Discover the aolon HS5 Smartwatch. This overview details its key features like Bluetooth calling, heart rate and blood oxygen monitoring, and its physical components. Manufactured in China.</p>
 <p><b>Aolon</b> PRODUCT MANUAL <b>WATCH CURVE</b></p> <p>KEEP STRIVING</p>	<p><a href="#">Aolon Jerry AC7012F6 Smartwatch: User Manual, Features, and Specifications</a></p> <p>Comprehensive user manual for the Aolon Jerry AC7012F6 smartwatch, detailing its curved screen, Bluetooth 5.3 calling, 123 sports modes, IP68 water resistance, and fitness tracking capabilities.</p>
	<p><a href="#">WATCH Foom Lite User Manual: Setup, Features, and Troubleshooting</a></p> <p>This user manual provides comprehensive instructions for the WATCH Foom Lite smartwatch by aolon. It covers app download, device pairing, charging, feature usage (step counting, heart rate, sleep tracking, calls, music, weather), settings, precautions, and troubleshooting common issues.</p>
 <p><b>Aolon</b> PRODUCT MANUAL <b>WATCH Curve3</b></p> <p>KEEP STRIVING</p>	<p><a href="#">Aolon Curve3 Smart Watch Product Manual</a></p> <p>This product manual provides detailed instructions for the Aolon Curve3 Smart Watch, covering setup, charging, app connectivity, Bluetooth features, troubleshooting, and FCC compliance. Learn how to maximize your smartwatch experience.</p>



