



Manuals.plus /

› Odsslgw /

› Odsslgw Smart Watch User Manual

Odsslgw P68

Odsslgw Smart Watch User Manual

Model: P68

[Introduction](#) [Setup](#) [Operation](#) [Health & Specifications](#)
[Fitness](#) [Maintenance](#) [Troubleshooting](#)

1. INTRODUCTION

Welcome to the user manual for your new Odsslgw Smart Watch (Model P68). This guide provides essential information on setting up, operating, and maintaining your device to ensure optimal performance. Your smart watch is designed to enhance your daily life with features for communication, health monitoring, and fitness tracking.

What's in the Box:

- Odsslgw Smart Watch
- Magnetic Charging Cable
- User Manual (this document)
- Screen Protector

2. SETUP GUIDE

2.1. Charging the Smart Watch

Before initial use, fully charge your smart watch. Connect the provided magnetic charging cable to the charging points on the back of the watch and to a USB power adapter (not included). A full charge typically takes 1.5 to 2 hours.



Image: The smart watch connected to its magnetic charging cable, illustrating the charging process and battery life indicators.

2.2. App Installation

To unlock the full potential of your smart watch, download the companion application on your smartphone. The app is compatible with Android 5.0 or above and iOS 9.0 or above.

1. Turn on Bluetooth on your Apple/Android phone.
2. Open the Google Play Store (for Android) or App Store (for iOS).
3. Search for the app (refer to your physical user manual for the exact app name or QR code) or scan the QR code provided in the manual.
4. Download and install the application.

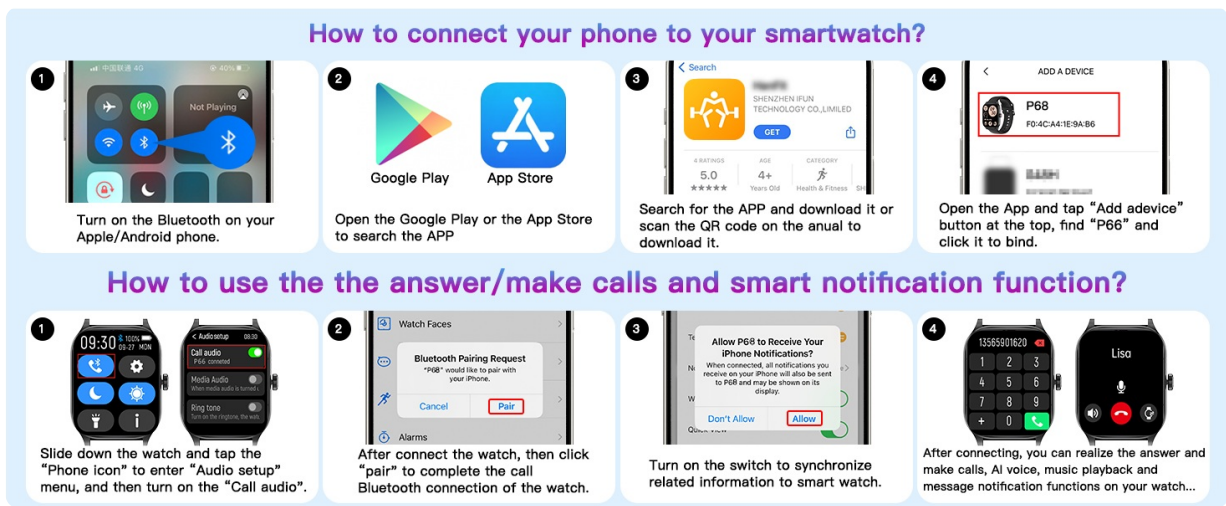


Image: Visual guide for connecting your smart watch to your smartphone via the dedicated application.

2.3. Device Pairing

Once the app is installed, open it and follow the on-screen instructions to pair your smart watch with your phone.

- Open the app and tap "Add device".
- The app will search for nearby devices. Select "P68" from the list to connect.
- Confirm the pairing request on both your phone and the watch.

3. OPERATING THE SMART WATCH

3.1. Basic Navigation

The Odsslgw Smart Watch features a full touch screen and a side button for navigation.

- **Side Button:** Press to wake up the screen, return to the main watch face, or access the main menu.
- **Touch Screen:** Swipe left/right or up/down to navigate through different functions and menus. Tap to select an option.



Image: The main watch face showing time and activity rings, alongside examples of notification and app screens.

3.2. Customizing Watch Faces

Personalize your smart watch with over 100 personalized dial wallpapers available through the app, or customize your own using your photos.

- From the main watch face, long-press the screen to enter watch face selection mode.
- Swipe left or right to browse pre-installed watch faces.
- For more options and custom dials, open the companion app on your phone and navigate to the watch face settings.

100+ Fashion Dial & Custom Dials

There are more than 100 different dials, which can be matched with different moods and different clothes. At the same time, you can freely change your personal photos as the subject.



Image: Examples of diverse watch faces and the app interface for creating custom dials.

3.3. Bluetooth Call and Smart Notifications

With its built-in speaker and microphone, you can make and receive calls directly from your smart watch. Receive notifications for calls, messages, and social media alerts.

- **Making Calls:** Access the call records menu, use the keypad to dial, or select from your synced contacts.
- **Receiving Calls:** The watch will vibrate and display the caller ID. Tap the green icon to answer or the red icon to reject.
- **Notifications:** Ensure notifications are enabled in the companion app. Raise your wrist to light up the screen and view incoming alerts.

Stay Connected, Stay Informed

Never miss a thing with our smart watch's notifications feature



Image: The smart watch showing notifications from various social media and communication apps, with the phone's notification settings.

Bluetooth Call & Voice Assistant

After connecting to Bluetooth, the watch has the functions of making and receiving calls, checking contacts and call records. And you can make and receive calls, send messages, check the weather, open various applications, through voice commands, which is more convenient.



Image: Detailed view of the smart watch's call functions, including keypad, call records, and contact list.

3.4. AI Voice Assistant

Interact with your smart watch using voice commands for convenience.

- Activate the voice assistant from the watch's menu.
- Use commands such as "Call [Contact Name]", "What's the weather?", or "Help me measure my heart rate."



Image: Demonstrates the AI voice assistant feature, allowing users to make calls and get information hands-free.

3.5. Other Practical Functions

Your smart watch includes a variety of useful tools:

- **Music Control:** Control music playback on your phone directly from your watch.
- **Weather Forecast:** Get real-time weather updates (requires app connection).
- **Alarms & Timers:** Set alarms and countdown timers.
- **Stopwatch:** Use for precise time measurement.
- **Find Phone:** Locate your misplaced phone by making it ring.
- **Camera Remote:** Control your phone's camera remotely.
- **World Clock:** View time in different time zones.



Image: An overview of the smart watch's diverse practical functions accessible from its interface.

4. HEALTH & FITNESS TRACKING

The Odsslw Smart Watch is equipped with advanced sensors to monitor your health and track your fitness activities.

4.1. Comprehensive Health Monitoring

- **Heart Rate Monitor:** Continuously tracks your heart rate throughout the day.
- **Blood Oxygen (SpO2) Monitor:** Measures your blood oxygen saturation levels.
- **Stress Monitor:** Provides insights into your stress levels.
- **Sleep Monitor:** Analyzes your sleep patterns, including deep and light sleep stages.
- **Sedentary Reminder:** Prompts you to move after periods of inactivity.
- **Drink Water Reminder:** Helps you stay hydrated throughout the day.

Smart Health Monitoring At Your Fingertips



Image: The smart watch interface showing various health metrics like heart rate, SpO2, stress, and sleep data.

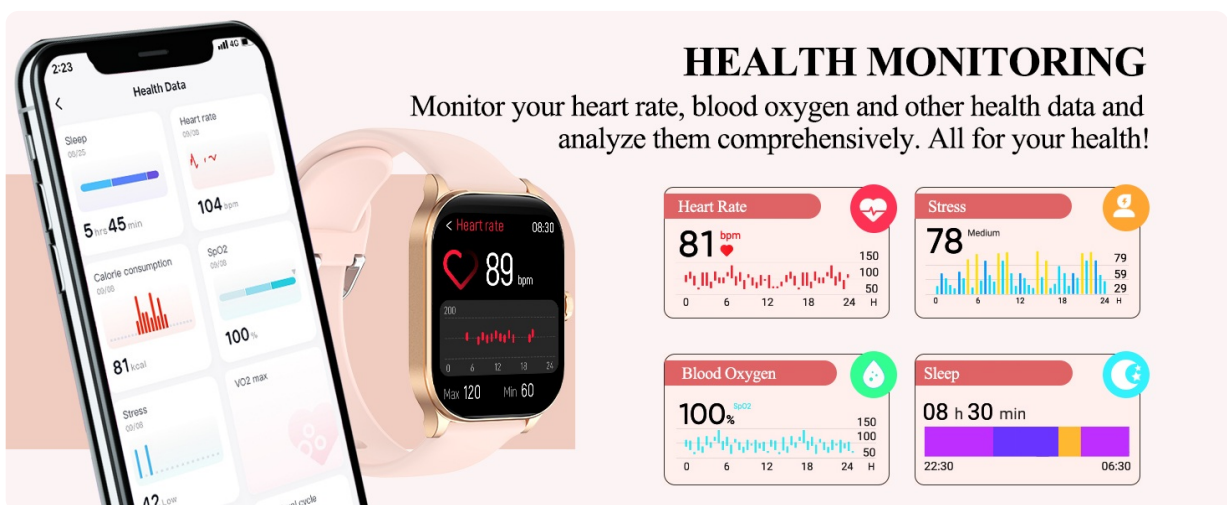


Image: A detailed view of the health monitoring features and how they are displayed on the watch and companion app.

4.2. Multi-Sport Modes & Activity Tracking

The smart watch supports over 100 sports modes, accurately tracking your workout data.

- Tracks steps, calories burned, and distance.

- Provides valuable insights to optimize your performance for activities like running, cycling, walking, yoga, and football.

22mm
0.86inch

47mm
1.85inch

10.17mm
0.4inch

36mm
1.41inch

350mAh

Magenetic USB Charge

- Long battery life
- Faster Charging

30 Days | **7 Days** | **1.5 Hours**
standby time | Battery life | Charging time

Charging complete!

Image: The smart watch tracking activity during various sports, displaying real-time data.

All-day Activity Tracking

15424 Steps

154 Kcal

105 BPM

2.1 Km

20' 02" /km

08:30

Distance Time

00:35:42

Threshold

05.33 km

0275 kcal

07798 steps

160 bpm

Image: Visual representation of all-day activity tracking, including steps, calories, distance, and heart rate.

5. MAINTENANCE

5.1. Waterproof Rating

The smart watch has an IP68 waterproof rating, meaning it is resistant to dust and can withstand immersion in water up to 1.5 meters for 30 minutes. This allows for normal use during swimming, hand washing, or exercising in the rain. Avoid hot water or steam, as this may damage the device.

5.2. Cleaning and Care

To maintain your smart watch, regularly clean the device and its strap. Use a soft, damp cloth to wipe down the screen and strap. Avoid harsh chemicals or abrasive materials.

5.3. Battery Care

To prolong battery life, avoid extreme temperatures. The smart watch offers 7-10 days of usage and over 30 days of standby time on a single charge.

6. TROUBLESHOOTING

If you encounter any issues with your Odsslgw Smart Watch, please refer to the following common solutions:

- **Connectivity Issues:** Ensure Bluetooth is enabled on your phone and the watch is within range. Restart both the watch and your phone, then attempt to re-pair.
- **App Not Syncing:** Check your internet connection. Ensure the app is updated to the latest version. Close and reopen the app.
- **Inaccurate Readings:** Ensure the watch is worn snugly on your wrist, not too tight or too loose. Clean the sensors on the back of the watch.
- **Watch Not Turning On:** Ensure the watch is fully charged. If the issue persists, contact customer support.

7. SPECIFICATIONS

Feature	Detail
Model Number	P68
Screen Size	2.01 Inches
Display Type	HD Touch Screen
Memory Storage Capacity	128 MB
Battery Capacity	350 Milliamp Hours
Battery Type	Lithium Polymer
Charging Time	1.5 - 2 hours
Usage Time	7 - 10 days
Standby Time	Over 30 days
Waterproof Rating	IP68
Connectivity Technology	Bluetooth
GPS	GPS Via Smartphone
Operating System Compatibility	Android 5.0+ / iOS 9.0+
Item Weight	3.52 ounces
Package Dimensions	7.36 x 2.95 x 0.67 inches

8. WARRANTY AND SUPPORT

For warranty information and customer support, please refer to the contact details provided on the product packaging or the official Odsslw website. Keep your purchase receipt as proof of purchase for any warranty claims.