

BAFANG M615 MM G320.1000.C

BAFANG HD 1000W Mid Drive Ebike Conversion Kit User Manual

Model: M615 MM G320.1000.C | Brand: BAFANG

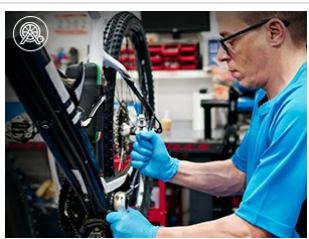
1. INTRODUCTION

This manual provides comprehensive instructions for the installation, operation, and maintenance of your BAFANG HD 1000W Mid Drive Ebike Conversion Kit. Please read this manual thoroughly before installation and use to ensure safe and optimal performance. Proper understanding and adherence to these guidelines will help maximize the lifespan and efficiency of your e-bike system.

2. SAFETY INFORMATION

2.1 General Safety Guidelines

- Always wear a helmet and appropriate safety gear when riding your e-bike.
- Ensure all components, especially the motor, battery, and display, are securely fastened before each ride.
- Do not operate the e-bike in heavy rain or immerse electrical components in water. While the wiring is waterproof, prolonged exposure to extreme wet conditions should be avoided.
- Familiarize yourself with local e-bike regulations and traffic laws.
- Perform regular checks on brakes, tires, and all electrical connections to ensure they are in good working order.



Avoid riding your e-bike in heavy rain to protect electrical components and ensure rider safety. The image shows a person riding a bike in the rain, indicating conditions to avoid.

2.2 Battery Safety (If Applicable)

- Use only the specified charger provided with your battery. Using an incompatible charger can cause damage or fire.

- Do not short-circuit the battery terminals.
- Store the battery in a cool, dry place away from direct sunlight and extreme temperatures.
- Do not disassemble, puncture, or expose the battery to fire or excessive heat.

3. PACKAGE CONTENTS

Please verify that all items listed below are included in your package before beginning installation.



This image displays the main components of the BAFANG HD 1000W Mid Drive Kit, including the motor, optional battery, C18 display, and various accessories required for conversion.

- BAFANG BBS-HD 48V/52V 1000W Mid Drive Motor
- C18 Display (Optional, or other compatible display models)
- 46T Sprocket (approx. 16.5mm thickness, 18.7cm diameter)
- Crank Arms (Left and Right)
- Thumb Throttle
- Speed Sensor with Magnet
- E-Brake Levers (or Brake Sensors, depending on your selected option)
- Installation Screws and Nuts
- Cable Ties for cable management
- BBS Wrench for motor installation
- Centre Shaft Removal Tool
- Installation Manual (this document)
- Sticker (for product identification)
- (Optional) E-bike Battery and Charger (if purchased with the kit)

4. SETUP AND INSTALLATION

4.1 Compatibility Check

Before beginning the installation, it is crucial to ensure your bicycle's bottom bracket is compatible with the BAFANG mid-drive kit. The kit is designed to fit bottom bracket lengths of 68-73mm, 85-105mm, and 105-125mm, with an internal diameter of 33.5-36mm.



This image illustrates how to accurately measure your bike's bottom bracket shell width and internal diameter using calipers or a ruler to confirm compatibility with the BAFANG mid-drive motor. Ensure the chainring will not interfere with the chain stay.

4.2 Installation Steps Overview

While detailed video guides are highly recommended and available online (e.g., YouTube), here is a general sequence of installation steps:

1. Remove your bicycle's existing crankset and bottom bracket.
2. Carefully insert the BAFANG mid-drive motor into the bottom bracket shell. Secure it firmly using the provided nuts and bolts.
3. Attach the 46T sprocket to the motor and then install the crank arms.
4. Mount the speed sensor on the rear chainstay, ensuring the magnet passes closely by it with each wheel rotation.
5. Install the display unit onto your handlebars in a comfortable and visible position.
6. Install the thumb throttle and the e-brake levers (or brake sensors) on the handlebars.
7. Connect all electrical cables from the motor to the display, throttle, speed sensor, and brake levers. Ensure all waterproof connections are properly seated and sealed.
8. Install the battery (if applicable) onto your bike frame and connect it to the motor's power cable.

BATTERY SPECIFICATION			
 			
Battery Model	Shark Battery 48V 13Ah	Shark Battery 48V 17.5Ah	GR0 Shark Battery 48V 19.2Ah
Battery Cell	18650 2850mAh	18650 3500mAh	LG 21700 4800mAh
BMS Max Protection Current	30A	30A	30A
USB Port			
Weight	4.25kg	4.94kg	4.7kg
Cycle Life	1000 times	1000 times	1000 times
Battery Charger			
  			
Battery Model	Votrox Battery 48V 20Ah	YingWu Battery 52V 20Ah	Rear Rack Battery 48V 17.5Ah
Battery Cell	SamSung 21700 5000mAh	SamSung 21700 5000mAh	18650 2800mAh
BMS Max Protection Current	30A	30A	30A
USB Port	USB TYPE-C		
Weight	5.2kg	5kg	6kg
Cycle Life	1000 times	1000 times	1000 times
Battery Charger			

This image shows the BAFANG mid-drive motor successfully installed on a bicycle, demonstrating its compact and integrated placement within the bottom bracket area.

4.3 Official Product Video

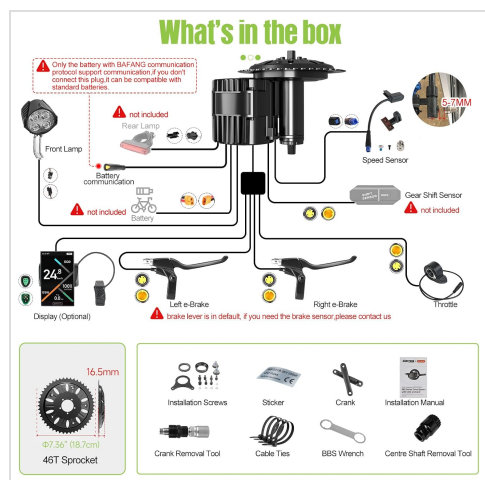


This official video from Greenergia provides a visual overview of the BAFANG BBS HD motor, highlighting its features, seamless integration, and performance capabilities for various riding conditions.

5. OPERATING INSTRUCTIONS

5.1 Display Operation (C18 Display)

The C18 display is your interface for controlling and monitoring your e-bike. It allows you to view riding data and adjust settings.



This image details the various indicators and information displayed on the C18 display, including current speed, battery level, ride time, trip distance, and error codes. It also shows the layout of control buttons.

- **Power On/Off:** Press and hold the power button on the display to turn the system on or off.
- **Assist Level Adjustment:** Use the 'Up' and 'Down' buttons to cycle through the Pedal Assist System (PAS) levels (typically 0-9). Level 0 provides no assistance, while higher levels provide more motor power.
- **Information Display:** Short press the 'i' button to switch between different data displays such as Odometer, Trip Distance, Max Speed, and Average Speed.
- **Headlight Control:** Press the dedicated headlight button to turn on or off any integrated headlights connected to the system.
- **USB Charging:** The display features a USB output port (Type-C) which can be used to charge mobile devices in an emergency.

5.2 Riding Modes

- **Pedal Assist Mode (PAS):** In this mode, the motor provides assistance as you pedal. The amount of assistance is determined by the selected PAS level. This mode is ideal for extending range and reducing effort.
- **Throttle Mode:** Use the thumb throttle to engage the motor and propel the bike without pedaling. This mode is useful for quick acceleration or when you need a burst of power.
- **Walk Assist Mode:** Hold the 'Down' button on the display to activate a low-speed assist, making it easier to push the bike when walking alongside it.

6. MAINTENANCE

Regular maintenance is essential to ensure the longevity and optimal performance of your BAFANG mid-drive kit.

- **Regular Cleaning:** Keep the motor, battery, and all electrical connections clean and free of dirt, dust, and debris. Use a damp cloth for cleaning; avoid high-pressure water jets.
- **Check Connections:** Periodically inspect all electrical connections for tightness and signs of corrosion. Ensure waterproof connectors are properly seated to prevent moisture ingress.
- **Lubrication:** Regularly lubricate the chain and other moving parts of your bicycle according to standard bicycle maintenance practices.
- **Brake Inspection:** Check brake pads and cables for wear and proper function. Ensure the e-brake cut-off sensors are working correctly.
- **Battery Care:**
 - Charge the battery regularly, even when not in use, to maintain its health. Avoid leaving it fully discharged for extended periods.
 - Avoid fully discharging the battery whenever possible.
 - Store the battery in a moderate temperature environment (ideally between 10°C and 25°C or 50°F and 77°F).

7. TROUBLESHOOTING

This section addresses common issues you might encounter with your BAFANG mid-drive kit.

Problem	Possible Cause	Solution
Motor not assisting	Loose electrical connection, low battery, speed sensor misalignment, brake lever engaged	Check all cable connections, charge battery, ensure speed sensor is aligned with magnet, release brake levers
Display not turning on	Battery not connected, faulty display cable, main power switch off	Check battery connection, inspect display cable for damage, ensure battery's main power switch is on
Error code on display	Specific component malfunction (e.g., motor, controller, sensor)	Note the error code and refer to the display's specific error code list (if available in a separate manual) or contact customer support for diagnosis.
Reduced range or power	Low tire pressure, improper gear usage, aging battery, riding uphill frequently	Inflate tires to recommended pressure, use appropriate gears for terrain, consider battery replacement if significantly old, reduce heavy loads

For more complex issues or if troubleshooting steps do not resolve the problem, please contact BAFANG customer support.

8. SPECIFICATIONS

Key technical specifications for the BAFANG HD 1000W Mid Drive Ebike Conversion Kit:

Feature	Detail
Brand	BAFANG
Model Name	M615 MM G320.1000.C
Voltage	48 Volts (compatible with 52V systems)
Horsepower / Power Output	1000 Watts
Material	Aluminum
Max Torque	160 N.m.
Bottom Bracket Compatibility	68-73mm, 85-105mm, 105-125mm (length); 33.5-36mm (internal diameter)
Sprocket Included	46T
Display Type	C18 (Optional, other models available)
Throttle Type	Thumb Throttle
Manufacturer	Bafang Electric (Suzhou) Co., Ltd.

9. WARRANTY AND SUPPORT

9.1 Warranty Information

The BAFANG HD 1000W Mid Drive Kit comes with the following warranty and service terms:

- **Return Policy:** 30 Days return period from the date of purchase.
- **Maintenance & Repair Service:** 365 days of maintenance and repair service.
- **Technical Guidance:** Forever technical guidance is provided for the product.

9.2 Customer Support

For technical assistance, warranty claims, or any other inquiries regarding your BAFANG mid-drive kit, please contact our dedicated customer support team.

Email: ga_sale_service@163.com



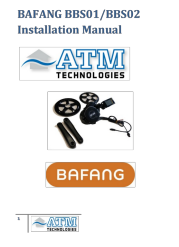



Our customer support team is ready to assist you with any questions or issues you may encounter, providing reliable

technical guidance and service.

© 2025 BAFANG. All rights reserved.

Related Documents

 <p>USER MANUAL BBS Series Drive System</p>	<p>Bafang BBS Series Drive System User Manual</p> <p>Comprehensive user manual for the Bafang BBS Series Drive System, covering installation, operation, maintenance, and troubleshooting for e-bike conversion kits.</p>
 <p>BAFANG M510 Mid Motor User Manual</p>	<p>BAFANG M510 Mid Motor User Manual and Installation Guide</p> <p>Comprehensive user manual for the BAFANG M510 Mid Motor, covering specifications, installation procedures, maintenance, and troubleshooting for electric bicycles.</p>
 <p>BAFANG BBS01/BBS02 Installation Manual</p>	<p>BAFANG BBS01/BBS02 Mid-Drive Electric Bike Conversion Kit Installation Manual</p> <p>Detailed installation guide for BAFANG BBS01 and BBS02 mid-drive electric bike conversion kits. Covers system overview, technical specifications, step-by-step assembly, component connections, and warranty information for e-bike DIY enthusiasts.</p>
 <p>BAFANG HD Drive System</p>	<p>BAFANG HD Drive System Dealer Manual</p> <p>Comprehensive dealer manual for the BAFANG HD Drive System, covering installation, technical specifications, operation, and troubleshooting for the MM G32.1000 drive unit and DP C10.UART display.</p>