

Tronsmart Mirtune S100

Tronsmart Mirtune S100 Portable Bluetooth Speaker User Manual

Model: Mirtune S100 | Brand: Tronsmart

INTRODUCTION

Thank you for choosing the Tronsmart Mirtune S100 Portable Bluetooth Speaker. This manual provides detailed instructions on how to set up, operate, and maintain your speaker to ensure optimal performance and longevity. Please read this manual thoroughly before using the product.



Image: The Tronsmart Mirtune S100 speaker, designed for outdoor use with its waterproof capabilities.

WHAT'S IN THE BOX

Upon unboxing your Tronsmart Mirtune S100, please ensure all the following components are present:

- 1x Tronsmart Mirtune S100 Portable Bluetooth Speaker
- 1x Type-C Charging Cable
- 1x User Manual
- 1x Warranty Card

Your browser does not support the video tag.

Video: An official unboxing of the Tronsmart Mirtune S100, showing all included accessories.

PRODUCT OVERVIEW

The Tronsmart Mirtune S100 is designed for robust audio performance and portability. Familiarize yourself with its key features and controls:

Key Features:

- **50W Powerful Stereo Sound:** Equipped with a built-in subwoofer for punchy bass and clear treble.
- **Retractable Handle:** For easy portability and carrying.
- **20-Hour Playtime:** Extended battery life for all-day music.
- **IPX7 Waterproof:** Designed to withstand splashes and submersion.
- **Customizable EQ:** Adjust sound profiles via the Tronsmart app.
- **Beat-Synced Light Show:** Dynamic LED lighting with multiple modes.
- **Built-in Power Bank:** Charge your external devices on the go.

POWERFUL 50W STEREO SOUND



1 32MM
Tweeter

2 70*93MM
woofer

3 32MM
Tweeter

Image: Internal speaker components, illustrating the 50W stereo sound architecture.

IDEAL FOR ON-THE-GO ADVENTURES

Compact, portable design
with a retractable strap



Image: The speaker's retractable handle makes it ideal for on-the-go adventures.

SETUP

1. Charging the Speaker

Before first use, fully charge your Tronsmart Mirtune S100 speaker. Connect the provided Type-C charging cable to the speaker's Type-C port and the other end to a compatible USB power adapter (not included). The charging indicator lights will show the charging status. A full charge takes approximately 4.5 hours.

2. Powering On/Off

To power on the speaker, press and hold the Power button () for 2 seconds until you hear an audible prompt. To power off, press and hold the Power button again for 2 seconds.

3. Bluetooth Pairing

1. Ensure the speaker is powered on and in Bluetooth pairing mode (the Bluetooth indicator light will be flashing).
2. On your device (smartphone, tablet, etc.), enable Bluetooth and search for available devices.
3. Select "Tronsmart Mirtune S100" from the list. Once connected, the Bluetooth indicator light will become solid.

The speaker uses Bluetooth 5.3 technology for a strong and stable connection, with a range of up to 49 feet (18 meters).



Image: Bluetooth 5.3 ensures a stable and wide-ranging connection.

OPERATING INSTRUCTIONS

Audio Playback

- **Play/Pause:** Press the Play/Pause button (⏮).
- **Volume Up/Down:** Press the '+' or '-' buttons.
- **Next/Previous Track:** Long press the '+' button for next track, long press the '-' button for previous track.

Multiple Play Modes

The Tronsmart Mirtune S100 supports various audio input methods:

- **Bluetooth Mode:** Wireless connection to your device.
- **AUX Mode:** Connect via a 3.5mm audio cable (not included) to devices without Bluetooth.
- **Micro SD Card Mode:** Insert a Micro SD card with audio files.
- **USB Mode:** Insert a USB drive with audio files.

MULTIPLE WAY TO PLAY

Support multiple play modes, including Bluetooth, Aux, Micro SD Card and USB.



Bluetooth



Aux



USB



Micro SD

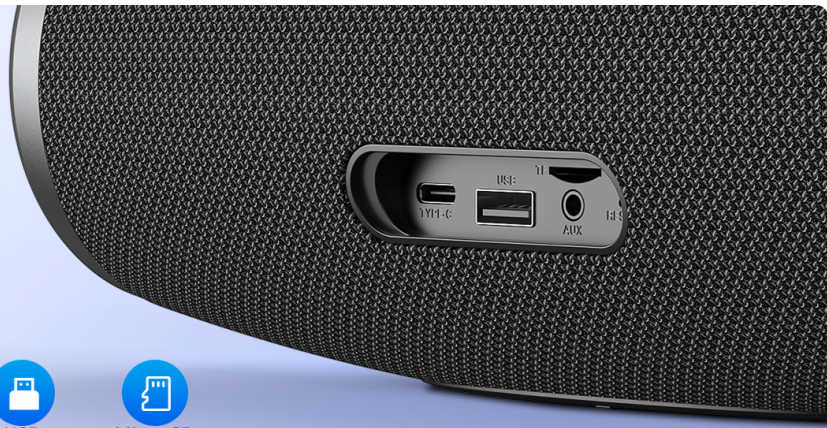


Image: The speaker offers versatile connectivity options for various audio sources.

Customizable EQ & Light Show

Enhance your listening experience by customizing the sound and lighting effects:

- **Tronsmart App:** Download the Tronsmart app to access advanced EQ settings (Default, SoundPulse, Deep Bass, Classical, Rock, Customize) and control the beat-synced light show.
- **Light Modes:** Choose from three available lighting modes: Cycle, Breath, and Marquee.

CUSTOMIZE FOR BEST SOUND

Customize EQ & light show via APP



Image: Customize your sound and light show via the Tronsmart app.



BEAT-SYNCD COLORFUL LIGHT SHOW

lighting modes available:
Cycle/Breath/Marquee

Image: The beat-synced colorful light show adds a dynamic visual element.

Stereo Pairing (True Wireless Stereo)

For an immersive audio experience, you can pair two Tronsmart Mirtune S100 speakers together:

1. Ensure both speakers are powered on and not connected to any other device.
2. On one speaker, press the TWS (True Wireless Stereo) button. It will enter pairing mode.
3. The two speakers will automatically connect to each other. Once paired, connect your device to one of the speakers via Bluetooth.

WIRELESS STEREO PAIRING

Connect two speakers to
double the sound



Image: Connect two speakers for amplified sound and rich stereo audio.

Hands-Free Calling

The speaker features a built-in microphone for hands-free calls. When a call comes in, music playback will pause. Press the Play/Pause button to answer or end a call. Long press to reject a call. You can also activate your device's voice assistant (Google Assistant or Siri) by pressing the dedicated voice assistant button.

Built-in Power Bank Function

The Tronsmart Mirtune S100 can act as a power bank to charge your mobile devices. Connect your device to the speaker's USB-A output port using a compatible charging cable. This feature allows you to keep your devices powered during extended outdoor activities.

BUILT-IN POWER BANK

Keep your gear
charged on the go



Image: The built-in power bank keeps your gear charged on the go.

MAINTENANCE

To ensure the longevity and optimal performance of your Tronsmart Mirtune S100 speaker, follow these maintenance guidelines:

- **Cleaning:** Use a soft, damp cloth to clean the speaker's exterior. Do not use harsh chemicals or abrasive cleaners.
- **Storage:** Store the speaker in a cool, dry place away from direct sunlight and extreme temperatures.
- **IPX7 Waterproof Rating:** The speaker is IPX7 waterproof, meaning it can be submerged in

water up to 1 meter for 30 minutes. However, it is crucial to ensure that all ports (Type-C, USB, AUX, Micro SD) are securely covered by the rubber flap before exposing the speaker to water. Failure to do so may result in water damage and void the warranty.

IPX7 FULLY WATERPROOF

Enjoy worry-free listening by the pool

IPX7



Note: The rubber cover of the speaker needs to be sealed.

Image: The IPX7 waterproof rating allows for worry-free listening by the pool or beach.

TROUBLESHOOTING

If you encounter issues with your Tronsmart Mirtune S100 speaker, refer to the following common problems and solutions:

Problem	Possible Cause	Solution
Speaker does not power on.	Low battery; power button not held long enough.	Charge the speaker fully. Press and hold the Power button for 2 seconds.
Cannot pair via Bluetooth.	Speaker not in pairing mode; device Bluetooth off; too far from speaker.	Ensure speaker is flashing Bluetooth light. Turn device Bluetooth off/on. Move device closer to speaker.
Sound distortion or low volume.	Volume too high; audio source issue; EQ settings.	Lower volume on speaker/device. Check audio source. Adjust EQ settings in the Tronsmart app.
Power bank function not working.	Speaker battery low; incompatible cable/device.	Ensure speaker has sufficient charge. Try a different USB cable or device.

SPECIFICATIONS

Feature	Detail
Model Name	Mirtune S100
Brand	Tronsmart
Speaker Type	Outdoor
Speaker Maximum Output Power	50 Watts
Connectivity Technology	Bluetooth
Wireless Communication Technology	Bluetooth
Bluetooth Range	49 Feet (18 Meters)
Battery Life	20 Hours
Charging Time	4.5 Hours
Battery Capacity	8000 Milliamp Hours
Is Waterproof	True (IPX7)
Product Dimensions	3.46"D x 9.09"W x 3.94"H
Item Weight	2.6 Pounds (1.18 kg)

Feature	Detail
Control Method	App, Voice
Audio Output Mode	Stereo
Frequency Response	20000 Hz

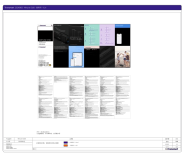


WARRANTY & SUPPORT

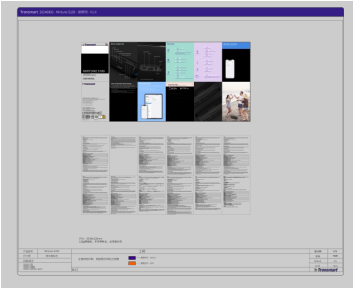
The Tronsmart Mirtune S100 Portable Bluetooth Speaker comes with a limited warranty. For detailed warranty information, please refer to the included Warranty Card or visit the official Tronsmart website.

For further assistance, troubleshooting, or product inquiries, please visit the [Tronsmart Official Store on Amazon](#) or their dedicated support channels.

© 2025 Tronsmart. All rights reserved.

Related Documents

	Tronsmart Mirtune S100 Portable Outdoor Speaker User Manual This user manual provides instructions for the Tronsmart Mirtune S100 portable outdoor speaker, covering button configuration, stereo pairing, Bluetooth connection, and app usage.
	Tronsmart Mirtune S100 Portable Outdoor Speaker User Manual User manual for the Tronsmart Mirtune S100 portable outdoor speaker, covering button configuration, stereo pairing, dual audio modes, Tronsmart App connection, and specifications.
	Tronsmart MIRTUNE C2 User Manual User manual for the Tronsmart MIRTUNE C2 portable outdoor speaker, including FCC statements and RF exposure information.
	Tronsmart T7 Portable Outdoor Speaker User Manual User manual for the Tronsmart T7 Portable Outdoor Speaker, detailing its features, button functions, specifications, Bluetooth connectivity, TWS pairing, app integration, care instructions, and warranty information.



[Tronsmart Mirtune S100 Portable Outdoor Speaker User Manual](#)

User manual for the Tronsmart Mirtune S100 portable outdoor speaker, covering button configuration, stereo pairing, dual audio modes, Tronsmart App connection, and specifications.

lang: score:24 filesize: 365.51 M page_count: 1 document date: 2024-08-05



[\[pdf\] Test Report](#)

FCC PART 15 news Test Report BT LE Shenzhen Geekbuy E commerce Co LTD MIRTUNES100 2AV3Z 2AV3ZMIRTUNES100 mirtunes100

Page 1 of 34 FCC ID: 2AV3Z-MIRTUNES100 Report No.: LCSA06244185EB FCC TEST REPORT For Shenzhen Geekbuy E-commerce Co., LTD. Portable Outdoor Speaker Test Model: **Mirtune S100** Prepared for Address : Shenzhen Geekbuy E-commerce Co., LTD. : Warehouse 101H, No.49 South Wuhe Avenue, Wuhe Community, B...

lang:en score:17 filesize: 2.18 M page_count: 34 document date: 2024-09-10



[\[pdf\] Test Report](#)

Shenzhen Sunspring Electronics Co Ltd Keyboard OJWCG107C Violet Wang Test Report BT Geekbuy E commerce LTD MIRTUNES100 2AV3Z 2AV3ZMIRTUNES100 mirtunes100

Page 1 of 37 FCC ID: 2AV3Z-MIRTUNES100 Report No.: LCSA06244185EA FCC TEST REPORT FOR Shenzhen Geekbuy E-commerce Co., LTD. Portable Outdoor Speaker Test Model: **Mirtune S100** Prepared for Address : Shenzhen Geekbuy E-commerce Co., LTD. : Warehouse 101H, No.49 South Wuhe Avenue, Wuhe Community,...

lang:en score:17 filesize: 1.82 M page_count: 37 document date: 2024-09-10