

## Lexar LSL400X001T-RNSNU

# Lexar Professional Go Portable SSD 1TB

MODEL: LSL400X001T-RNSNU

Brand: Lexar

## 1. Introduction

The Lexar Professional Go Portable SSD is a compact, high-performance external storage solution designed for seamless data transfer and expanded storage capacity across various devices. This manual provides essential information for setting up, operating, maintaining, and troubleshooting your device.

## 2. Product Overview

The Lexar Professional Go Portable SSD offers robust performance in an ultracompact design. It features a USB 3.2 Gen 2 Type-C connector for direct plug-and-play functionality.

### 2.1. Package Contents

- Lexar Professional Go Portable SSD
- Silicone Protective Case
- USB Type-C Male-to-Female Adapter
- Storage Box & Strap
- Label Stickers

### 2.2. Product Features

- **Ultra-compact Design:** Weighing approximately 13 grams, it is designed for portability.
- **High-Speed Performance:** Up to 1050MB/s read and 1000MB/s write speeds.
- **Rugged Durability:** IP65 rated for dust and water resistance, and drop-resistant up to 1 meter.
- **Wide Compatibility:** Works with mobile phones, iPads, tablets, Macs, PCs, and cameras equipped with Type-C ports.
- **Apple ProRes Support:** Enables seamless 4K 60fps ProRes recording directly to the drive with compatible devices like iPhone 15 Pro/Max.

### 2.3. Visual Overview



*Figure 1: Lexar Professional Go Portable SSD. This image displays the compact, silver-colored SSD unit with the Lexar Professional branding.*

# What's in the box?

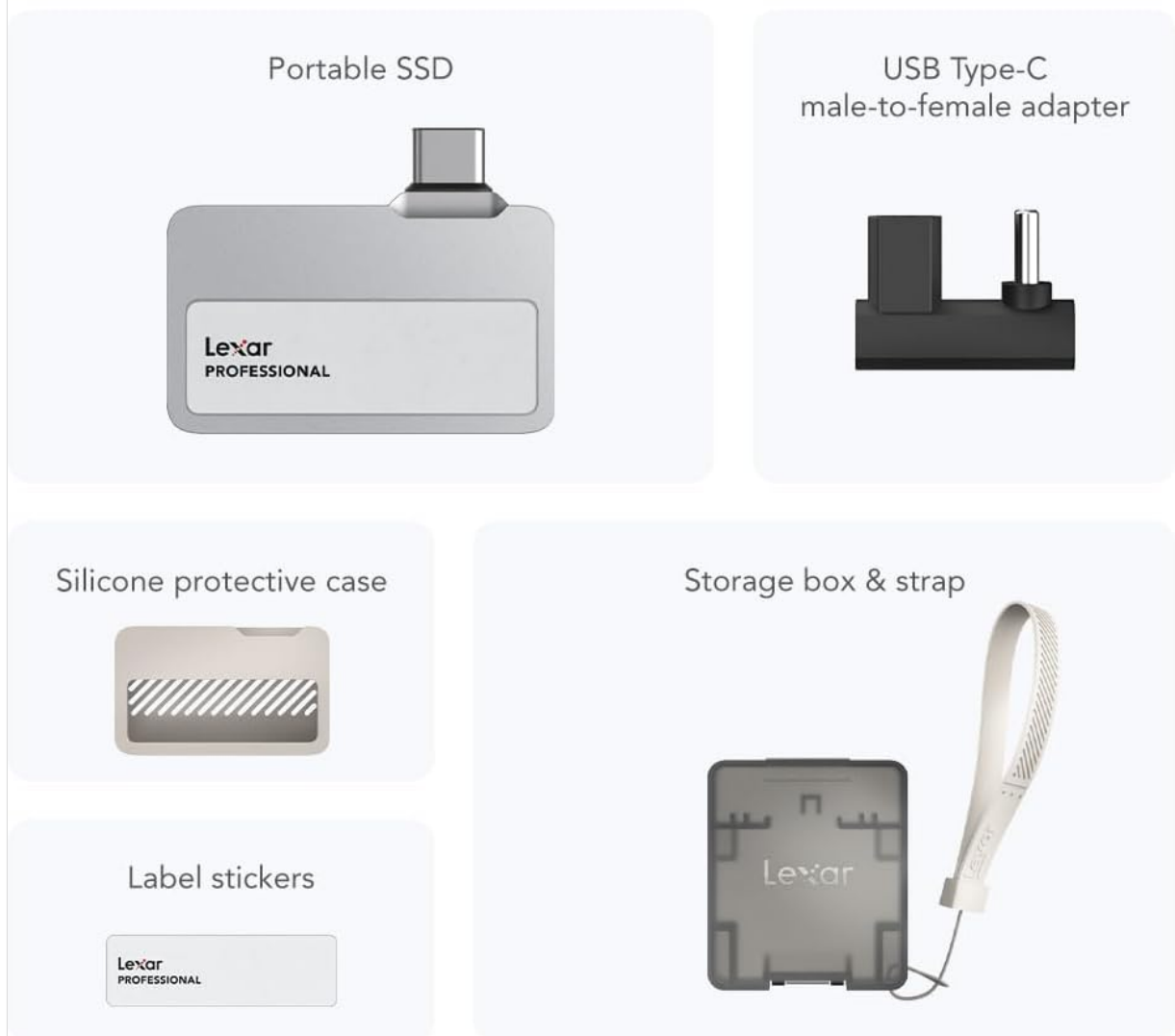


Figure 2: What's in the Box. This image illustrates the included items: the portable SSD, USB Type-C male-to-female adapter, silicone protective case, storage box & strap, and label stickers.

## 3. Setup

Follow these steps to set up your Lexar Professional Go Portable SSD:

1. **Prepare the SSD:** If desired, place the SSD inside the provided silicone protective case for enhanced durability.
2. **Direct Connection:** For direct connection to a device with a USB-C port (e.g., iPhone 15, iPad, Android phone), firmly insert the SSD's USB-C connector into your device's port. Ensure it is fully seated to establish a stable connection.
3. **Using the Adapter:** If your device's port is recessed or requires an extension, use the included USB Type-C male-to-female adapter. Connect the SSD to the female end of the adapter, then plug the male end of the adapter into your device.
4. **Device Recognition:** Your device should automatically detect the SSD. You may receive a notification indicating that an accessory is connected. Unlock your device if prompted to allow access to the SSD.

## Customized USB-C connector for a secure fit



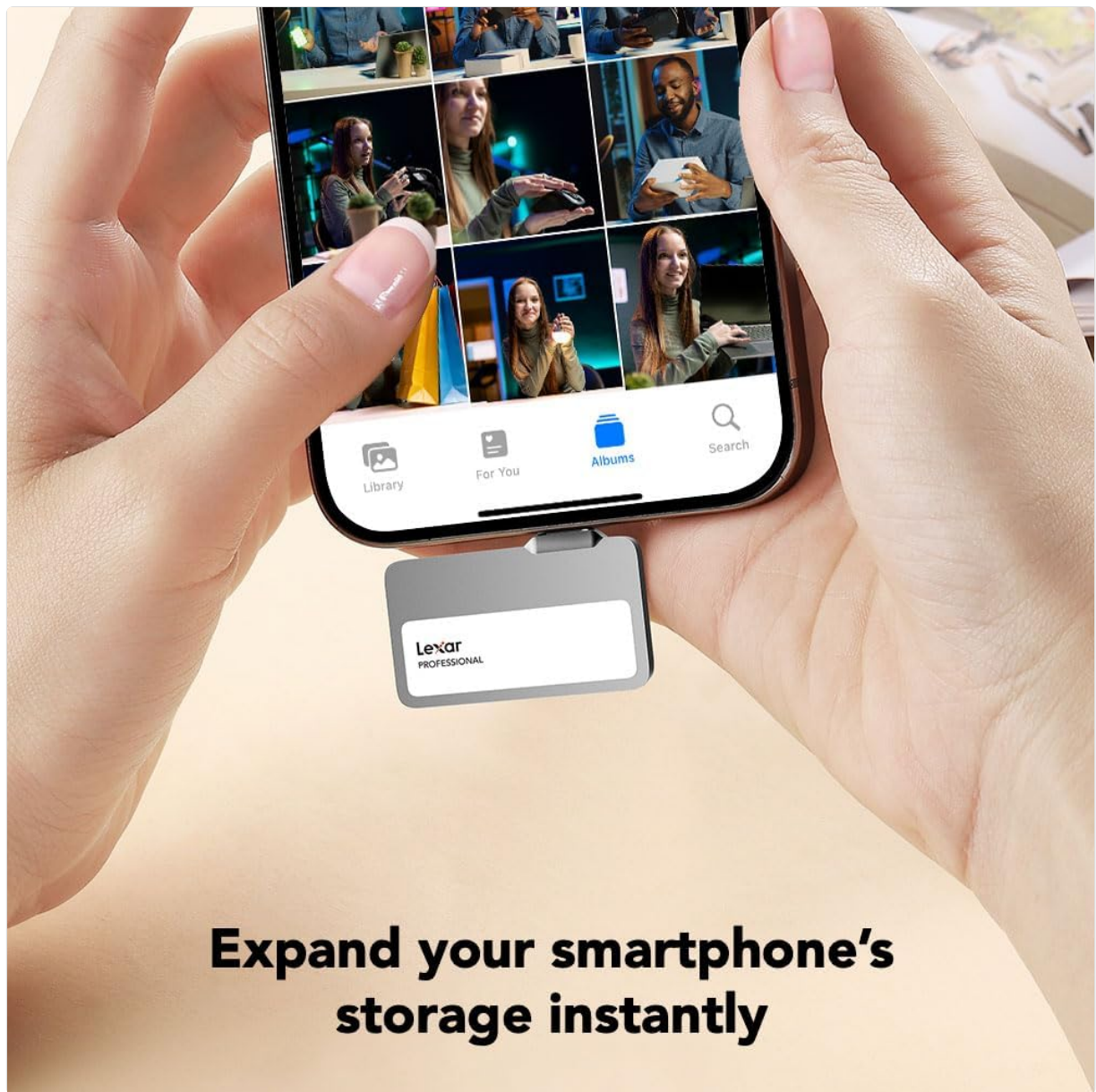
**Press firmly to ensure drive is  
completely inserted before use**

Figure 3: Customized USB-C Connector for a Secure Fit. This image demonstrates the correct and incorrect way to insert the SSD into a smartphone's USB-C port, emphasizing the need for a firm, full insertion.

## 4. Operating Instructions

The Lexar Professional Go Portable SSD is designed for ease of use and high-speed performance.

1. **Accessing Files:** Once connected and recognized by your device, the SSD will appear as an external storage drive. You can access, transfer, and manage files using your device's native file management application.
2. **Data Transfer:** Utilize the SSD for rapid transfer of large files, such as photos and videos. The USB 3.2 Gen 2 interface supports speeds up to 1050MB/s read and 1000MB/s write.
3. **4K 60fps ProRes Recording:** For compatible devices (e.g., iPhone 15 Pro/Max), you can record Apple ProRes 4K 60fps video directly to the SSD, preventing dropped frames and expanding recording time. Ensure your device's camera settings are configured to save to the external drive.
4. **Expanding Storage:** The SSD instantly expands your device's storage, allowing you to capture more content without worrying about internal storage limitations.



*Figure 4: Expand Your Smartphone's Storage Instantly. This image shows the compact SSD connected to a smartphone, illustrating how it provides immediate additional storage.*





Figure 5: Record Apple ProRes Video Directly. A person is shown holding a smartphone with the SSD attached, indicating its capability to record high-quality video directly to the drive.

#### 4.1. Official Product Video

*Video 1: Lexar Portable GO SSD. This official seller video demonstrates the Lexar Portable Go SSD, showcasing its compact size, direct connectivity to smartphones, and high-speed data transfer capabilities. It highlights its use for expanding storage and recording high-resolution video.*

### 5. Maintenance

To ensure the longevity and optimal performance of your Lexar Professional Go Portable SSD, follow these maintenance guidelines:

- **Physical Protection:** Always use the provided silicone protective case to guard against drops and impacts.
- **Environmental Protection:** The SSD is IP65 rated for dust and water resistance. While it can withstand splashes and dust, avoid prolonged submersion in water or exposure to excessive dust.
- **Cleaning:** Use a soft, dry cloth to clean the exterior of the SSD. Avoid harsh chemicals or abrasive materials.
- **Safe Removal:** Always safely eject the SSD from your device before physically disconnecting it to prevent data corruption.
- **Storage:** When not in use, store the SSD in its protective case and storage box to prevent damage.



Figure 6: Built to Endure. This image visually represents the SSD's IP65 dust and water resistance, 1-meter drop resistance, and 256-bit AES encryption for data security.

## 6. Troubleshooting

If you encounter issues with your Lexar Professional Go Portable SSD, refer to the following common solutions:

- **SSD Not Recognized:**
  - Ensure the SSD is firmly and completely inserted into the USB-C port.
  - Try connecting to a different USB-C port on your device or another compatible device.
  - Restart your device and reconnect the SSD.
  - Check your device's settings or file manager to see if the external drive is listed.
- **Slow Transfer Speeds:**
  - Ensure your device supports USB 3.2 Gen 2 for optimal performance. Older USB standards will result in slower speeds.
  - Close any background applications that might be consuming system resources or bandwidth.
  - Verify the cable or adapter used is fully functional and supports high-speed data transfer.
- **Recording Issues (e.g., Dropped Frames):**
  - Confirm your recording device (e.g., iPhone 15 Pro/Max) is updated to the latest software version.

- Ensure the SSD is securely connected and recognized by the device.
- Check your camera application settings to ensure it is configured to record directly to the external SSD.

If problems persist, please contact Lexar customer support.

## 7. Specifications

Feature	Detail
Model Number	LSL400X001T-RNSNU
Digital Storage Capacity	1 TB
Interface	USB 3.2 Gen 2 (USB-C)
Max Read Speed	Up to 1050 MB/s
Max Write Speed	Up to 1000 MB/s
Durability	IP65 Dust/Water-resistant, 1-meter Drop-resistant
Encryption	256-bit AES Encryption
Compatibility	Mobile phones, iPads, tablets, Macs, PCs, cameras (Type-C devices)
Dimensions (Approx.)	1.71" x 1.00" x 0.32" (43.4mm x 25.4mm x 8.1mm)
Weight (Approx.)	13 grams (0.029 lbs)



# Pocket-sized, powerful performance

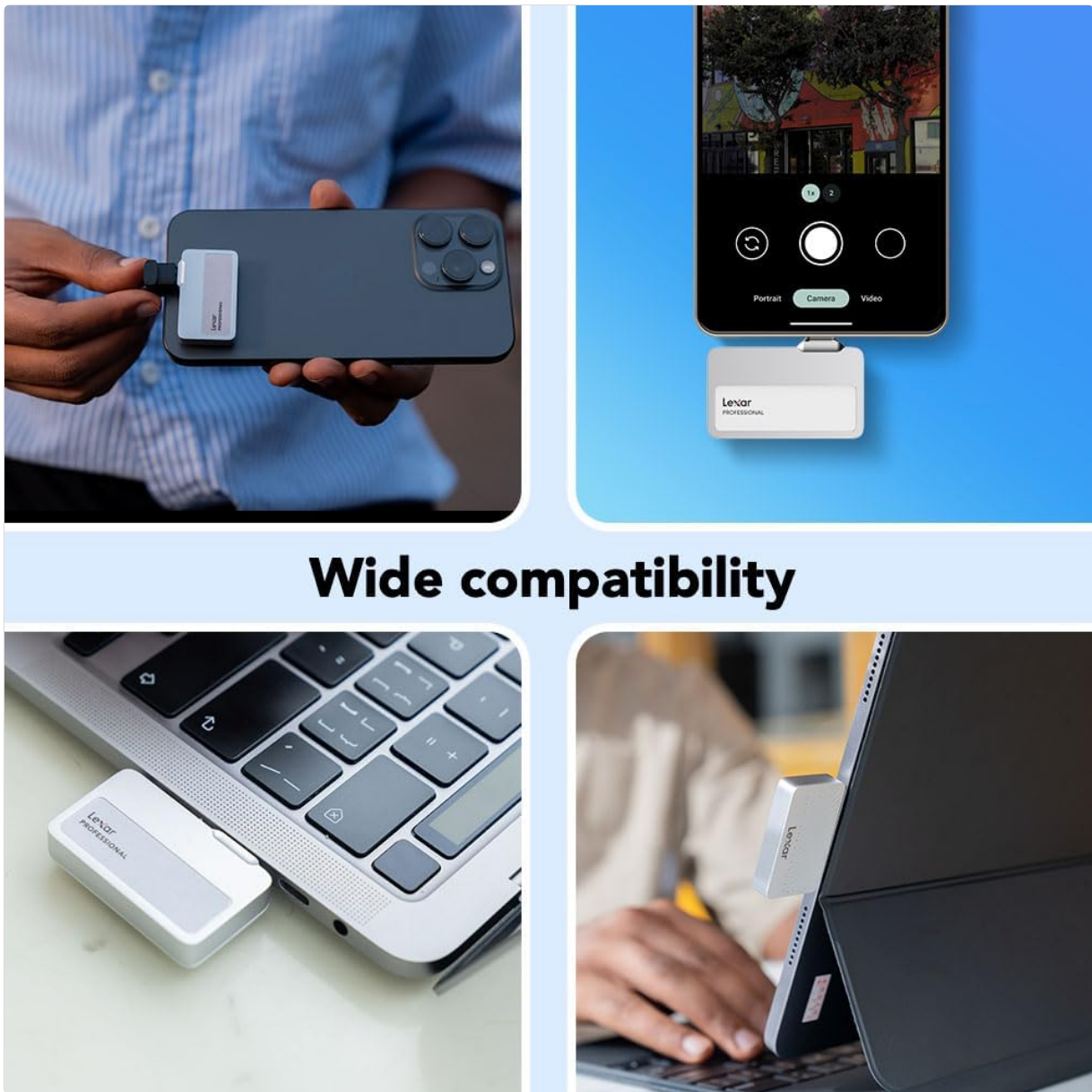
UP TO  
**1050** READ  
MB/s<sup>1</sup>  

---

**1000** WRITE  
MB/s<sup>1</sup>



Figure 7: Pocket-sized, Powerful Performance. This image highlights the compact dimensions (0.98" x 1.71") and high read/write speeds (up to 1050MB/s read, 1000MB/s write) of the SSD.



## Wide compatibility

Figure 8: Wide Compatibility. This collage shows the SSD connected to a smartphone, a laptop, and a tablet, demonstrating its broad compatibility with Type-C devices.

## 8. Warranty and Support

Lexar provides comprehensive support for its products.

- **Warranty:** The Lexar Professional Go Portable SSD comes with a five-year limited warranty. Please retain your proof of purchase for warranty claims.
- **Customer Support:** For technical assistance, product inquiries, or warranty service, please visit the official Lexar support website or contact their customer service.