

Manuals+

[Q & A](#) | [Deep Search](#) | [Upload](#)

manuals.plus /

- › [Lexar](#) /
- › [Lexar Professional Go Portable SSD with Hub User Manual](#)

Lexar LSL400S002T-RNSNU

Lexar Professional Go Portable SSD with Hub User Manual

Model: LSL400S002T-RNSNU

Brand: Lexar

INTRODUCTION

The Lexar Professional Go Portable SSD with Hub is designed to expand storage and connectivity for mobile devices and computers. This ultracompact solution offers high-speed data transfer and robust protection, making it suitable for demanding tasks such as 4K video recording.





Figure 1: Lexar Professional Go Portable SSD with Hub. The image displays the compact, silver-colored SSD unit and the accompanying hub, highlighting their sleek design.

WHAT'S IN THE BOX

- Portable SSD
- Hub
- Silicone protective case
- Cold-shoe adapter cable
- USB Type-C male-to-female adapter
- USB Type-C male-to-male adapter
- Storage box & strap
- Label stickers
- Storage bag

What's in the box?

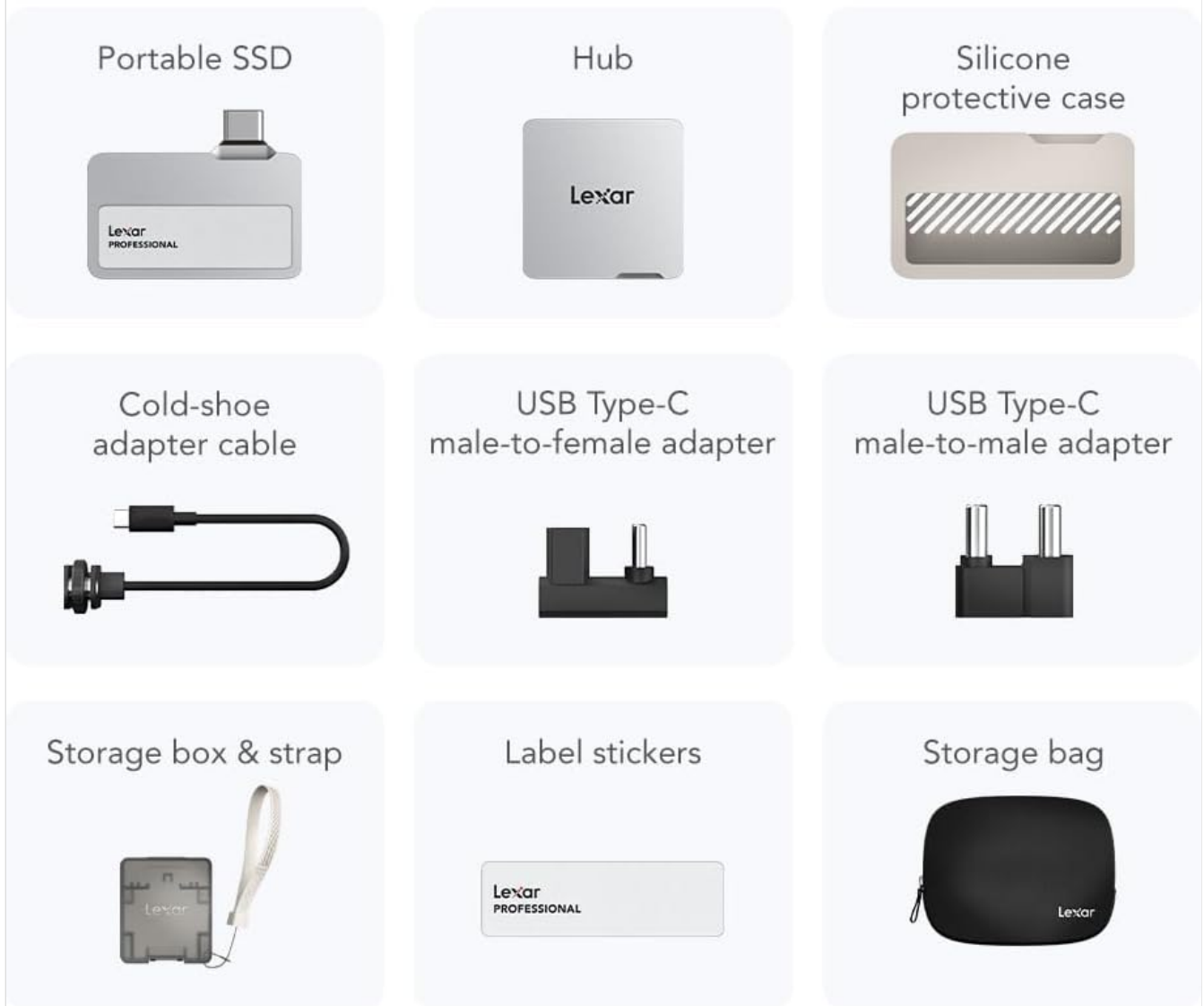


Figure 2: All components included in the product packaging. This visual representation helps users verify package contents.

SETUP

1. Connecting the Portable SSD

The portable SSD features a USB Type-C connector. It can be used independently or connected to the hub.

1. **Direct Connection:** Insert the SSD's USB Type-C connector directly into a compatible device's USB-C port (e.g., iPhone 15 Pro/Max, tablet, laptop). Ensure the connection is firm and fully inserted.
2. **Using Adapters:** For devices with different USB ports, use the provided USB Type-C male-to-female or male-to-male adapters as needed.

Customized USB-C connector for a secure fit



**Press firmly to ensure drive is
completely inserted before use**

Figure 3: Close-up of the SSD's USB-C connector and the importance of full insertion. The image shows a visual guide for proper connection, indicating "Fully inserted" with a green checkmark and "Not fully inserted" with a red cross.

2. Connecting the Hub

The hub expands connectivity with multiple USB Type-C ports for various peripherals.

1. **Attach SSD to Hub:** The portable SSD securely attaches to the hub via a dedicated slot. Ensure it clicks into place for a stable connection.
2. **Connect Hub to Device:** Use the integrated USB Type-C connector on the hub to connect it to your mobile phone, tablet, or computer.
3. **Add Peripherals:** Utilize the hub's additional USB Type-C ports for power connection, accessory connection (e.g., lighting, microphones), or other USB Type-C adapter connections.



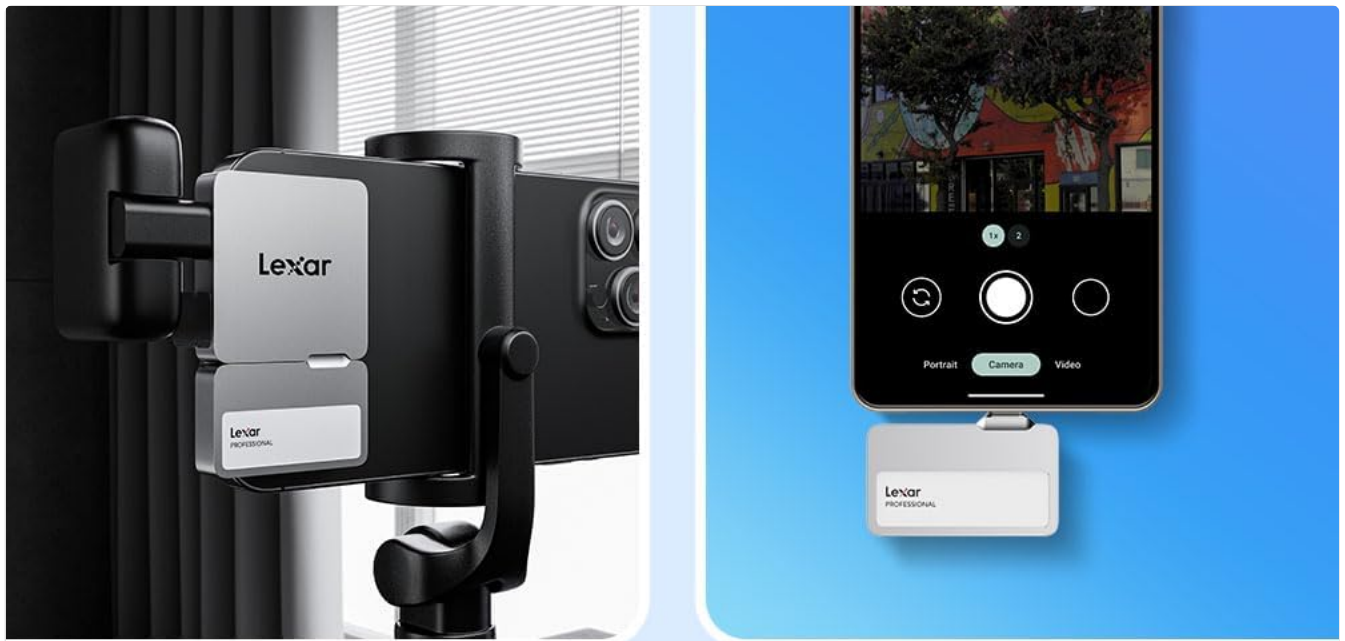
Figure 4: Diagram illustrating the hub's various USB Type-C ports for power, accessories, and adapter connections, enabling a comprehensive professional setup.

OPERATING INSTRUCTIONS

Using with iPhone 15 Pro/Max (or above)

The Lexar Professional Go Portable SSD with Hub is optimized for seamless 4K 60fps ProRes video recording directly from compatible iPhone models.

- Connect the SSD (or hub with SSD) to your iPhone's USB-C port.
- Ensure your iPhone recognizes the external storage. You may need to unlock your iPhone to allow accessory access.
- Begin recording video. The iPhone will automatically direct ProRes footage to the connected SSD, preventing internal storage limitations.



Wide compatibility

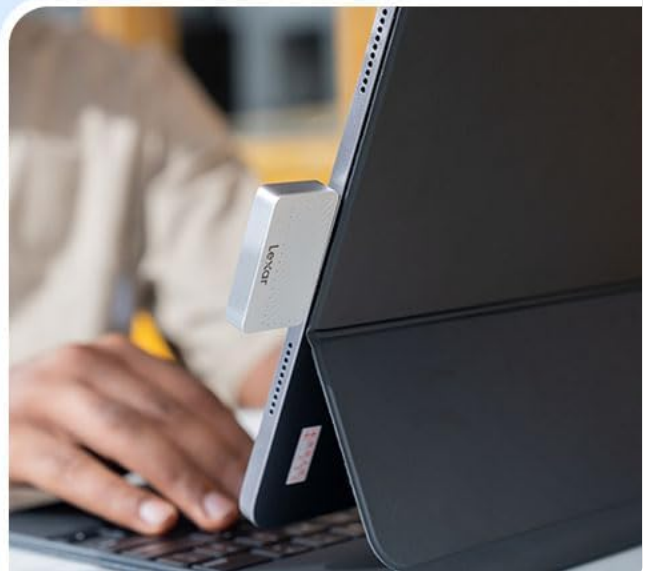


Figure 5: An iPhone mounted on a gimbal, connected to the Lexar SSD and hub, demonstrating its use for recording Apple ProRes video in 4K 60FPS.

Using with Other Devices

The SSD and hub are compatible with a wide range of devices including desktops, tablets, and smartphones (via USB-C).

- Connect the SSD or hub to your device's USB-C port.
- The device should recognize the SSD as an external drive. You may need to access it through your device's file management system.
- Drag and drop files to transfer data.

What's in the box?

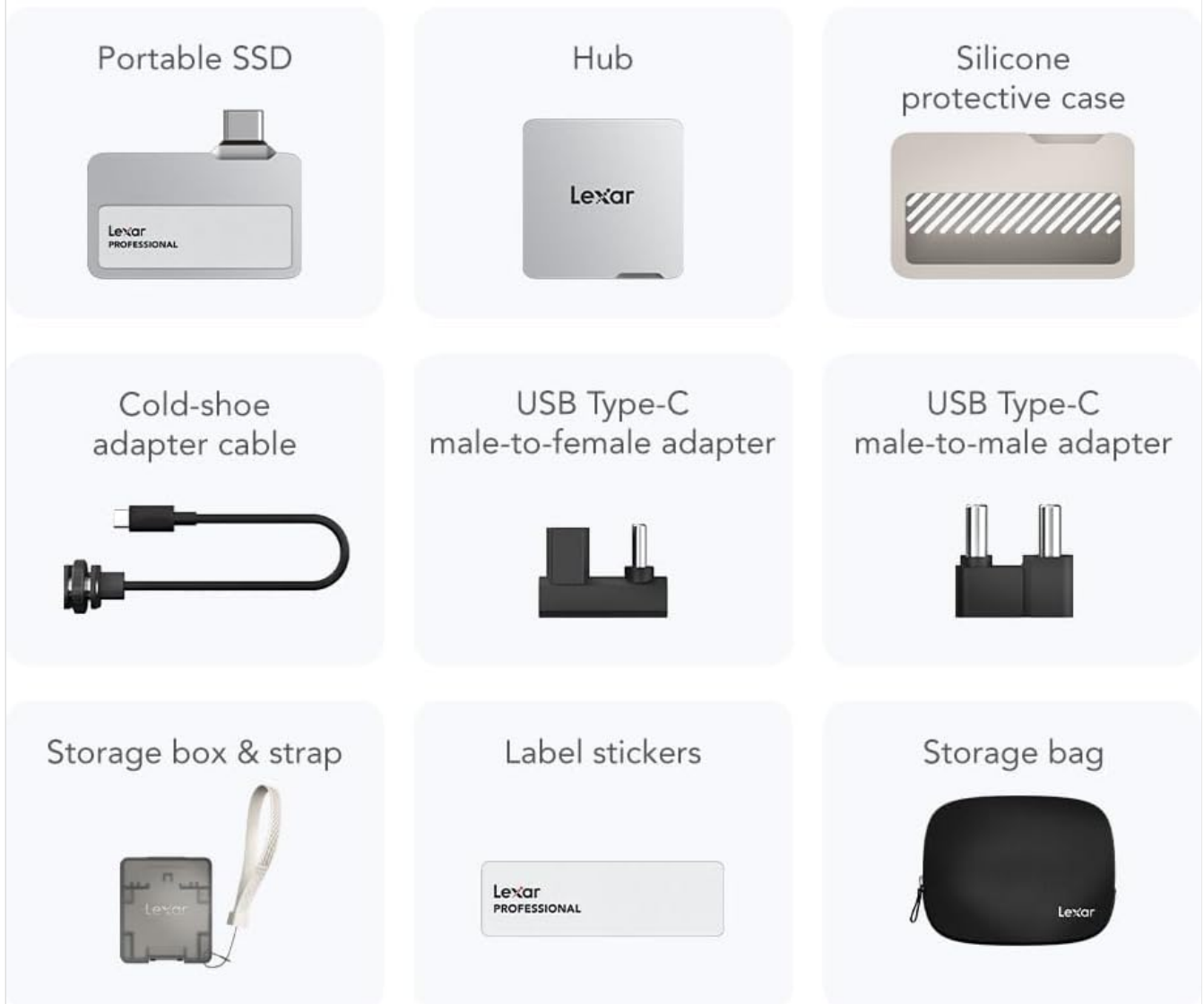


Figure 6: Four panels showing the Lexar SSD connected to an iPhone on a gimbal, an iPhone in hand, a laptop, and a tablet, illustrating its broad compatibility.

Data Transfer Speeds

The Lexar Professional Go Portable SSD with Hub supports USB 3.2 Gen 2, offering blazing-fast performance up to 1050MB/s read and 1000MB/s write speeds. This ensures swift backups and seamless 4K recording without dropped frames.

Pocket-sized, powerful performance

UP TO
1050 READ
MB/s'
1000 WRITE
MB/s'



Figure 7: A hand holding an iPhone with the Lexar SSD attached, displaying "UP TO 1050 MB/s READ" and "1000 MB/s WRITE" to highlight its high-speed performance.

FEATURES

- **Ultra-compact Design:** Designed for portability, allowing you to carry it anywhere for spontaneous creativity.
- **Wireless Plug-and-Play:** Type-C connector eliminates the need for tangled cables. Ensure the drive is completely inserted for proper function.
- **Apple ProRes Capture:** Specifically designed to capture brilliant Apple ProRes footage and store it with ease.
- **Versatile Hub:** The included hub features four USB Type-C ports, along with adapters and cables, providing flexibility to customize your setup for various shooting scenarios.
- **High-Speed Performance:** Achieves up to 1050MB/s read and 1000MB/s write for seamless 4K recording and swift backups.
- **Rugged Durability:** Dust-proof and water-resistant (rated IP65), and drop-resistant up to 1 meter, making it suitable for travel and outdoor use.
- **256-bit AES Encryption:** Provides secure data protection.



Figure 8: Visual representation of the SSD's IP65 dust and water resistance, 1-meter drop resistance, and 256-bit AES encryption for enhanced durability and security.

MAINTENANCE

Care and Cleaning

- Keep the device free from dust and debris. Use a soft, dry cloth for cleaning.
- Avoid exposing the device to extreme temperatures or direct sunlight for prolonged periods.
- While IP65 rated for dust and water resistance, avoid intentional submersion or exposure to high-pressure water jets.

Storage

- When not in use, store the SSD and hub in the provided storage bag or case to protect them from physical damage.
- Utilize the silicone protective case for the SSD to add an extra layer of protection.

TROUBLESHOOTING

Device Not Recognized

- **Check Connection:** Ensure the SSD or hub is firmly and completely inserted into the device's USB-C port. A loose connection is a common cause.
- **Unlock Device:** For mobile devices like iPhones, ensure the device is unlocked to allow accessory connection.
- **Try Different Port/Cable:** Test with another USB-C port on your device or a different compatible cable/adaptor if available.
- **Restart Device:** Restart your host device (phone, tablet, computer) and try connecting again.
- **Check Device Compatibility:** Verify that your device supports external storage via USB-C and the necessary protocols (e.g., USB 3.2 Gen 2).

Slow Data Transfer

- **Verify USB Standard:** Ensure your device's USB-C port supports USB 3.2 Gen 2 speeds. Older USB standards will result in slower transfers.
- **Cable Quality:** Use the provided high-quality cables or other certified USB 3.2 Gen 2 cables. Lower quality or longer cables can degrade performance.
- **Background Processes:** Close any unnecessary applications or background processes on your host device that might be consuming system resources.
- **Drive Fragmentation:** While less common with SSDs, ensure the drive is not excessively fragmented (for traditional hard drives) or that the file system is healthy.

Overheating

- During intensive operations like 4K video recording, the SSD may become warm. This is normal.
- Ensure adequate airflow around the device. Avoid covering it during operation.
- If the device becomes excessively hot and performance degrades, disconnect it and allow it to cool down before resuming use.

SPECIFICATIONS

Brand	Lexar
Model Number	LSL400S002T-RNSNU
Digital Storage Capacity	2 TB
Hard Disk Interface	USB 3.2 Gen 2
Read Speed	Up to 1050MB/s
Write Speed	Up to 1000MB/s
Ruggedness	IP65 Dust/Water Resistant, 1-meter Drop Resistant
Security	256-bit AES Encryption
Compatible Devices	Desktop, Tablet, Smartphone (with USB-C)
Item Weight	5.9 ounces
Color	Silver

WARRANTY AND SUPPORT

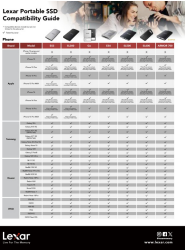





The Lexar Professional Go Portable SSD with Hub comes with a **Five-year limited warranty**.

For technical support, warranty claims, or additional information, please visit the official Lexar website or contact their customer service department.

Optional data recovery plans are available for purchase:

- 2-Year Data Recovery Plan
- 3-Year Data Recovery Plan

Related Documents - LSL400S002T-RNSNU

	<p>Lexar Portable SSD Compatibility Guide: Find Your Perfect Match</p> <p>Comprehensive compatibility guide for Lexar Portable SSDs (ES3, SL300, Go, ES4, SL500, SL600, ARMOR 700) across a wide range of phones, cameras, game consoles, motherboards, tablets, notebooks, and systems. Ensure your devices work seamlessly with Lexar storage solutions.</p>
	<p>Lexar Brand Identity Guidelines: Logo Usage and Design Standards</p> <p>Comprehensive guidelines for using the Lexar brand identity, including logo usage, color palettes, typography, and acceptable/unacceptable practices for Lexar and Lexar Professional products.</p>
	<p>Lexar Professional 1667x SDXC UHS-II Memory Cards - High-Speed Performance</p> <p>Discover the Lexar Professional 1667x SDXC UHS-II memory cards, engineered for professionals. Offering up to 250MB/s read speeds, 4K video support, and large capacities up to 256GB, these cards ensure fast workflow and reliable performance. Backwards compatible and rigorously tested.</p>
	<p>Lexar Professional Go Portable SSD with Hub: High-Speed Storage for Apple ProRes Video</p> <p>Discover the Lexar Professional Go Portable SSD with Hub, an ultra-compact, high-performance storage solution designed for mobile creators. Featuring USB 3.2 Gen 2 speeds up to 1050MB/s read and 1000MB/s write, IP65 dust/water resistance, and a versatile hub, it's ideal for capturing and editing Apple ProRes 4K 60 fps video on iPhone 15 Pro/Pro Max and iPhone 16 Pro/Pro Max.</p>
	<p>Lexar SL500 Portable SSD with Magnetic Set - High-Speed Storage for Creators</p> <p>Discover the Lexar SL500 Portable SSD with Magnetic Set, offering up to 2000MB/s read and 1800MB/s write speeds. Ideal for creators, photographers, and professionals, it features a durable, slim aluminum design, IP54 rating, and 256-bit AES encryption. Compatible with a wide range of devices including iPhone 15 Pro for ProRes video recording.</p>
	<p>Lexar Professional Go Portable SSD with Hub: High-Performance Mobile Video Storage</p> <p>Explore the Lexar Professional Go Portable SSD with Hub, a compact and versatile storage solution for creators. It offers high-speed USB 3.2 Gen 2, IP65 durability, and seamless ProRes 4K 60fps recording for iPhone 15/16 Pro models, simplifying mobile video workflows.</p>

