

Lexar LSL400S001T-RNSNU

Lexar Professional Go Portable SSD with Hub User Manual

Model: LSL400S001T-RNSNU

1. INTRODUCTION

The Lexar Professional Go Portable SSD with Hub is designed to provide seamless external storage and expanded connectivity for your mobile devices, especially for high-resolution video recording. Its ultracompact and rugged design ensures portability and durability for various creative needs.





Figure 1: Lexar Professional Go Portable SSD with Hub

2. PACKAGE CONTENTS

Verify that all items listed below are included in your package:

- Portable SSD
- Hub
- Silicone protective case
- Cold-shoe adapter cable
- USB Type-C male-to-female adapter
- USB Type-C male-to-male adapter
- Storage box & strap
- Label stickers
- Storage bag

What's in the box?

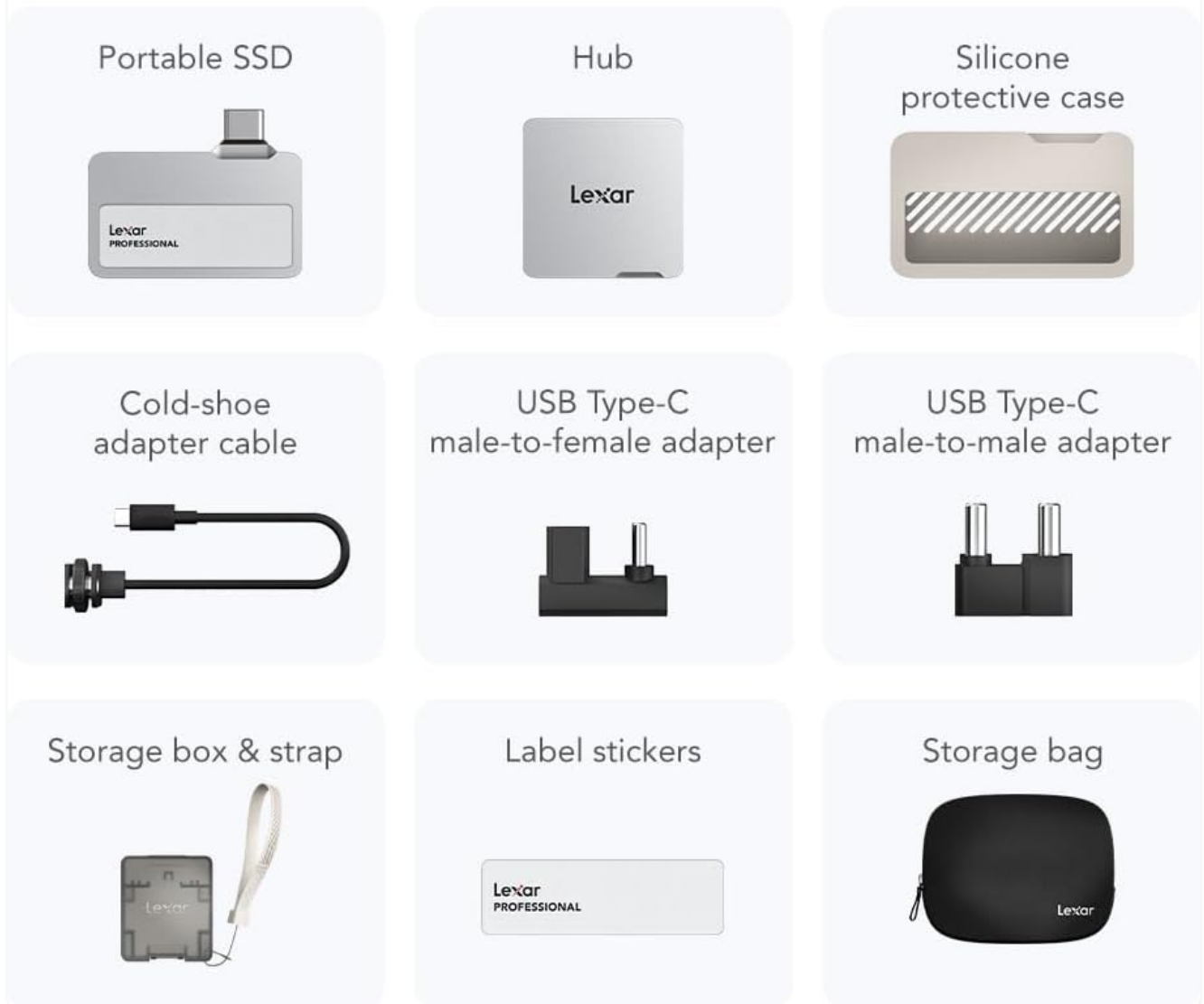


Figure 2: All components included in the package.

3. SETUP

3.1 Using the Portable SSD Independently

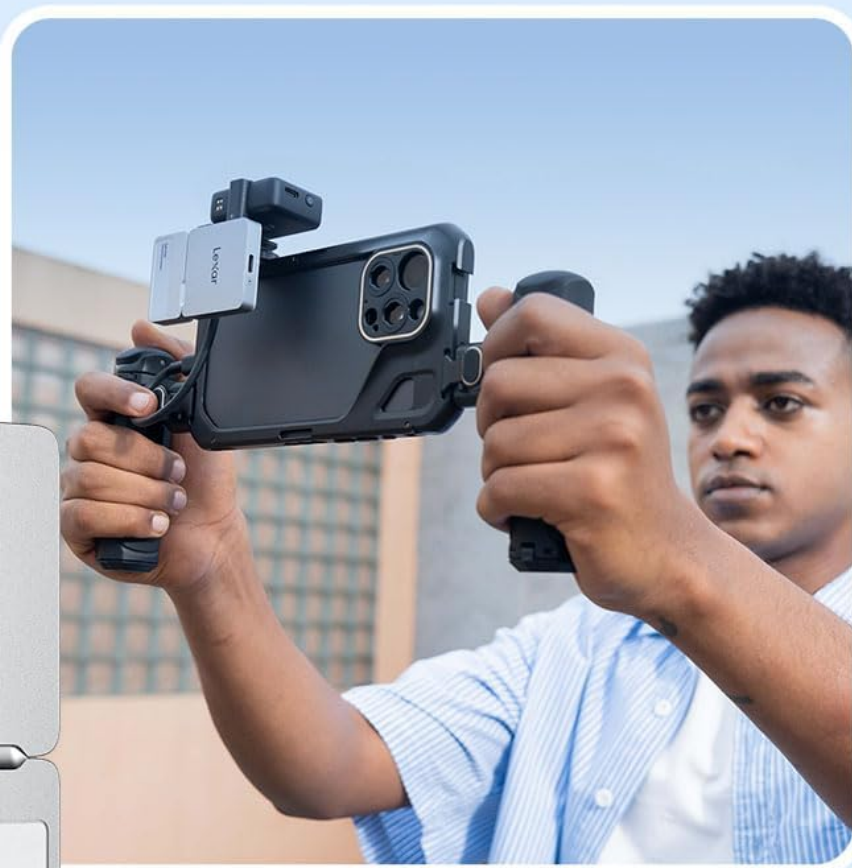
For direct storage expansion without additional peripherals, the portable SSD can be plugged directly into your device's USB-C port. Ensure the connection is firm and fully inserted for stable operation.

USB TYPE-C
Power Connection

USB TYPE-C
Accessory Connection



USB TYPE-C
Adapter Connection



**Use the hub to create
a full professional setup**

Figure 3: Direct plug-and-play connection of the SSD.

Customized USB-C connector for a secure fit



**Press firmly to ensure drive is
completely inserted before use**

Figure 4: Ensure the USB-C connector is fully inserted for a secure fit.

3.2 Using the Portable SSD with Hub

To expand your setup with additional accessories, attach the portable SSD to the hub using the male-to-male adapter. The hub provides multiple USB-C ports for connecting microphones, lights, and power banks.

Pocket-sized, powerful performance

UP TO
1050 READ MB/s¹
1000 WRITE MB/s¹



Figure 5: Assembling the portable SSD and the hub.



**Record Apple ProRes video
directly to the drive in 4K 60FPS***

* With iPhone 15 Pro/Pro Max and above

Figure 6: The hub offers multiple USB Type-C ports for power, accessory, and adapter connections.

Video 1: Official Lexar tutorial on how to set up and use the Professional Go Portable SSD with Hub. This video demonstrates both independent use and integration with the hub for a professional mobile filmmaking setup.

4. OPERATING INSTRUCTIONS

4.1 Recording Apple ProRes Video

The Lexar Professional Go Portable SSD is optimized for recording Apple ProRes footage directly from compatible devices like the iPhone 15 Pro/Max. This allows for high-quality video capture without filling your device's internal storage.



Figure 7: Record Apple ProRes video directly to the drive in 4K 60FPS (with iPhone 15 Pro/Pro Max and above).

4.2 Checking Storage Location

To access your recorded ProRes videos, navigate to the Files app on your iPhone. The videos will be saved under the Lexar drive, typically in the DCIM-100APPLE folder.

5. MAINTENANCE

5.1 Care and Handling

The Lexar Professional Go Portable SSD is built to endure. It is rated IP65 for dust and water resistance, and is drop-resistant up to 1 meter. For optimal longevity, keep the device clean and avoid extreme temperatures. The included silicone protective case provides additional protection.

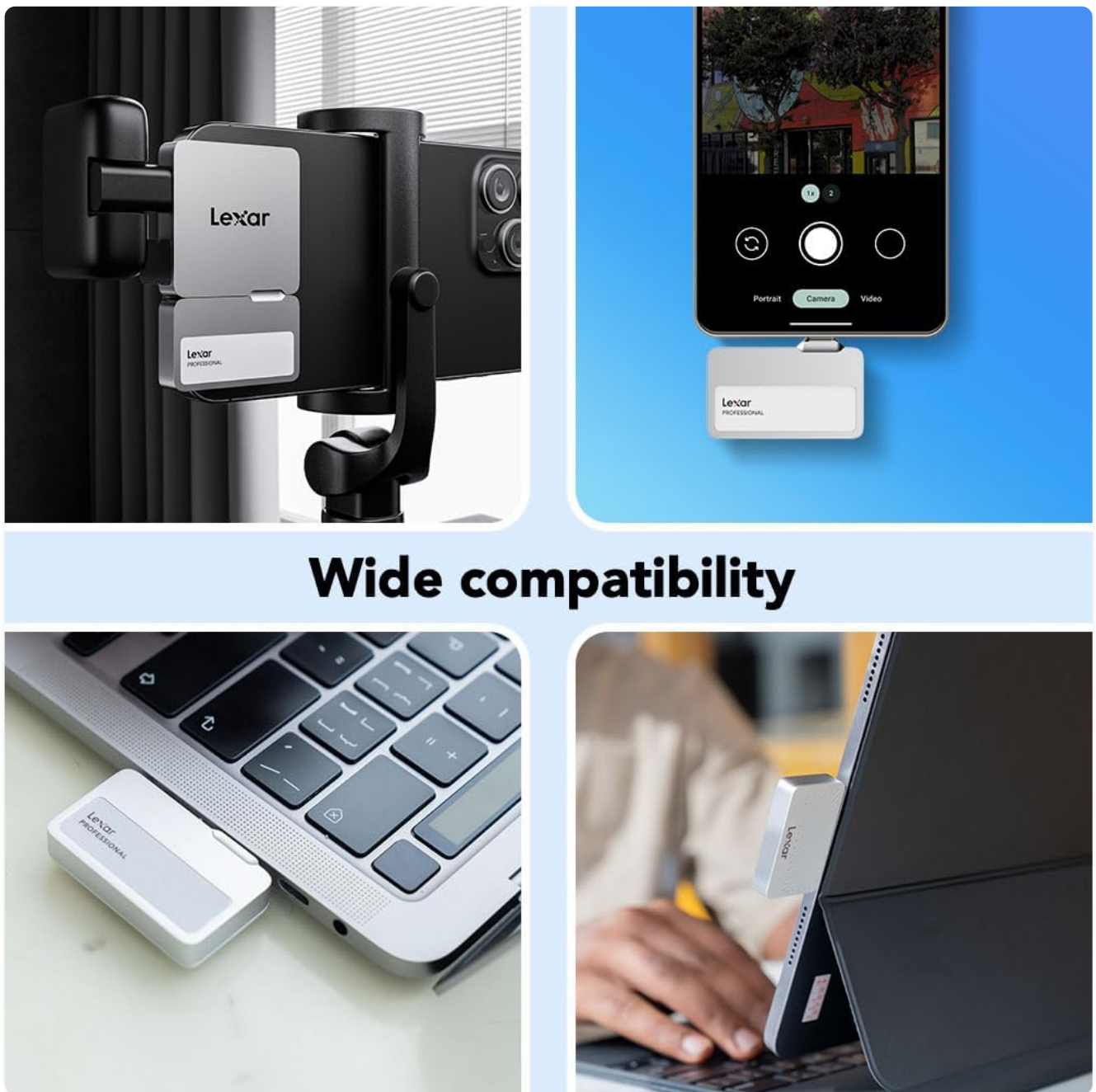


Figure 8: The SSD is dust-proof, water-resistant (IP65), and drop-resistant up to 1 meter.

6. TROUBLESHOOTING

6.1 Common Issues

- **Device Not Recognized:** Ensure the USB-C connector is fully and securely inserted into your device. Try connecting to a different USB-C port or device to rule out port issues.
- **Slow Transfer Speeds:** Verify that your device supports USB 3.2 Gen 2 for optimal performance. Ensure no other high-bandwidth operations are running simultaneously.
- **Overheating:** While the device may warm up during intensive use (e.g., 4K 60fps ProRes recording), excessive heat could indicate an issue. Ensure proper ventilation and avoid covering the device during operation.
- **Dropped Frames During Recording:** Confirm your recording settings (resolution, frame rate) are compatible with the SSD's write speeds (up to 1000MB/s). Ensure your phone's software is up to date.

7. SPECIFICATIONS

Feature	Detail
Brand	Lexar
Model Number	LSL400S001T-RNSNU
Digital Storage Capacity	1 TB
Hard Disk Interface	USB 3.2 Gen 2
Read Speed	Up to 1050MB/s
Write Speed	Up to 1000MB/s
Ruggedness	IP65 Dust/Water Resistant, 1-meter Drop Resistant
Compatible Devices	Desktop, Tablet, Smartphone (iPhone 15/16 series for ProRes)

8. WARRANTY AND SUPPORT

8.1 Warranty Information

The Lexar Professional Go Portable SSD with Hub comes with a five-year limited warranty.

8.2 Customer Support

For further assistance, technical support, or warranty claims, please visit the official [Lexar Store on Amazon](#) or refer to the contact information provided in your product packaging.

Documents - Lexar – LSL400S001T-RNSNU



[\[pdf\]](#)
PowerPoint evahuang1013 Lexar® Professional Go Portable SSD with Hub Accutech Lexar SL400
Model 2TB Black GL 1TB media accutechdata resources |||
Lexar Professional Go Portable SSD with Hub September 2024 Launch
Communication This document is for ... 01T-RNBNG LSL400S002T-RNSNG
LSL400S001T-RNSNG LSL400S002T-RNBNU LSL400S001T-RNBNU
LSL400S002T-RNSNU **LSL400S001T-RNSNU** Material Description Lexar
Professional Go Portable SSD with Hub, SL400 Model , 2...
lang:en score:35 filesize: 6.12 M page_count: 17 document date: 2024-09-20

