

TYMO HC305P

TYMO STYLUX Thermal Brush User Manual

Model: HC305P | Brand: TYMO

1. INTRODUCTION

Thank you for choosing the TYMO STYLUX Thermal Brush. This innovative styling tool is designed to provide effortless volume, smooth hair, and create various styles, including straightening and loose curls, without the need for hot air. Please read this manual thoroughly before use to ensure safe operation and optimal performance.

2. SAFETY INFORMATION

To reduce the risk of burns, electrocution, fire, or injury to persons, please observe the following safety precautions:

- Always unplug the appliance immediately after using.
- Do not use while bathing or in a shower.
- Do not place or store appliance where it can fall or be pulled into a tub or sink.
- Do not place in or drop into water or other liquid.
- Do not reach for an appliance that has fallen into water. Unplug immediately.
- This appliance is hot when in use. Do not let heated surfaces touch bare skin.
- Use the appliance only for its intended use as described in this manual.
- Do not use attachments not recommended by the manufacturer.
- Never operate this appliance if it has a damaged cord or plug, if it is not working properly, or if it has been dropped or damaged, or dropped into water.
- Keep the cord away from heated surfaces. Do not wrap the cord around the appliance.
- Never use while sleeping.

- Never drop or insert any object into any opening.
- Do not use outdoors or operate where aerosol (spray) products are being used or where oxygen is being administered.
- The appliance is equipped with a 30-minute auto shut-off feature for safety.
- **Important Note:** The TYMO STYLUX Thermal Brush is not a hair dryer brush and cannot dry hair. Ensure hair is dry before use.

3. PRODUCT OVERVIEW

The TYMO STYLUX Thermal Brush combines advanced technology with user-friendly design to deliver professional styling results at home. Its key components and features include:

- **1.7-inch Ceramic Barrel:** Provides even heat distribution for consistent styling.
- **Flexi-Fit Tech Bristles:** Adjustable nylon bristles minimize hair pulling and tangling, while a staggered design ensures optimal hair distribution and secure hold.
- **T-Gloss Keratin Coating:** Helps reduce frizz and adds shine, leaving hair smooth and soft.
- **Dual PTC Heating Elements:** Ensures rapid heat-up in just 20 seconds and maintains precise, stable temperature.
- **360° Swivel Cord:** Allows for flexible and comfortable styling from any angle.
- **Lightweight Design:** Weighing only 0.49 lbs, it is easy to handle and perfect for travel.
- **Dual Voltage (100V-240V):** Suitable for worldwide use.

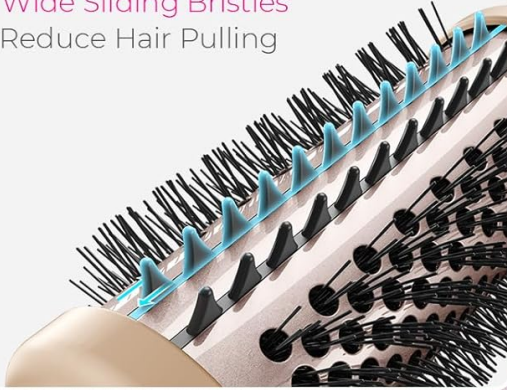


Figure 1: The TYMO STYLUX Thermal Brush, showcasing its ergonomic design and round barrel with bristles.

Flexi-Fit™ TECHNOLOGY

Grip but never tangle

Wide Sliding Bristles
Reduce Hair Pulling



Densely Packed Bristles
Enhance Stronger Grip

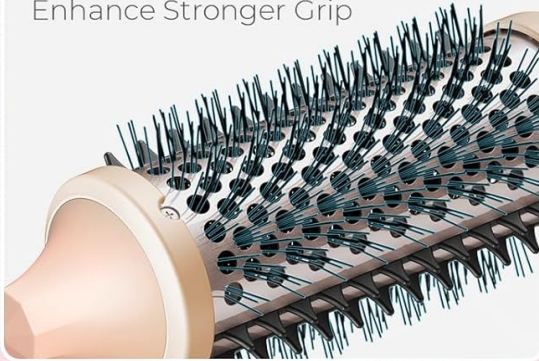


Figure 2: Detailed view of the Flexi-Fit Technology, highlighting the wide sliding bristles for reduced hair pulling and densely packed bristles for enhanced grip.

2 IN 1 STRAIGHTENER AND CURLER

T-Gloss Tech Reduce Frizz Easily

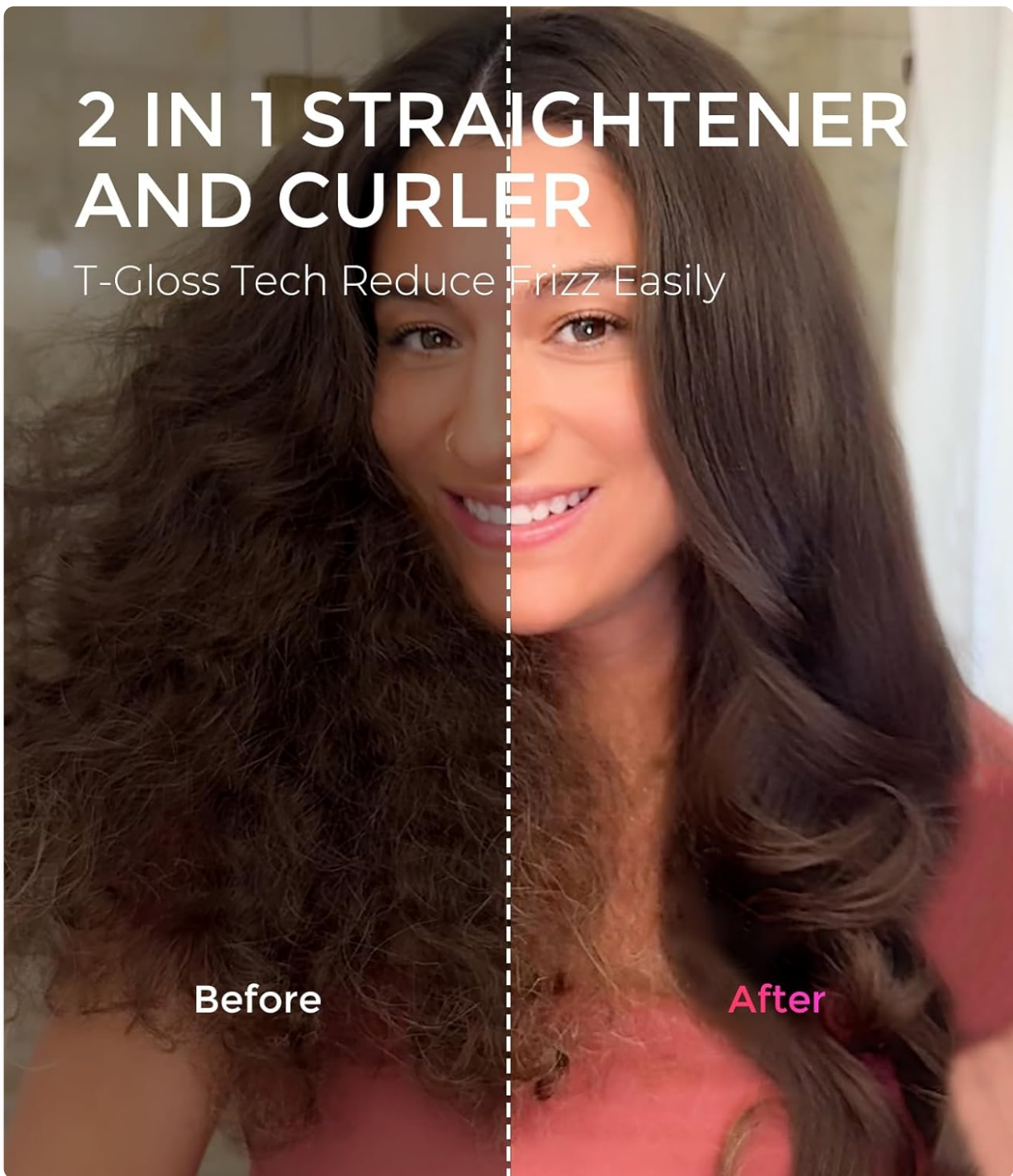


Figure 3: A visual comparison demonstrating the brush's ability to transform frizzy hair into smooth, shiny hair, illustrating its 2-in-1 straightening and curling capability.

4. SETUP

Before first use, ensure all packaging materials are removed. The TYMO STYLUX Thermal Brush is ready for use directly out of the box.

Power Connection

Plug the appliance into a suitable electrical outlet. The dual voltage feature (100V-240V) allows for international use, but an appropriate plug adapter may be required depending on your region.

Temperature Settings

The brush features 3 temperature settings to cater to various hair types (2A to 4A). It also has a temperature memory function that recalls your last used setting.

- **White Light (160°C / 320°F):** For fine or delicate hair.
- **Yellow Light (180°C / 360°F):** For normal or medium hair.
- **Orange Light (200°C / 395°F):** For thick or coarse hair.

To turn on/off, long press the power button for 2 seconds. Press the power button briefly to cycle through temperature settings. The indicator light will stop flashing when the set temperature is reached.



Figure 4: Illustration of the three temperature settings and instructions for turning the device on/off and adjusting temperature.

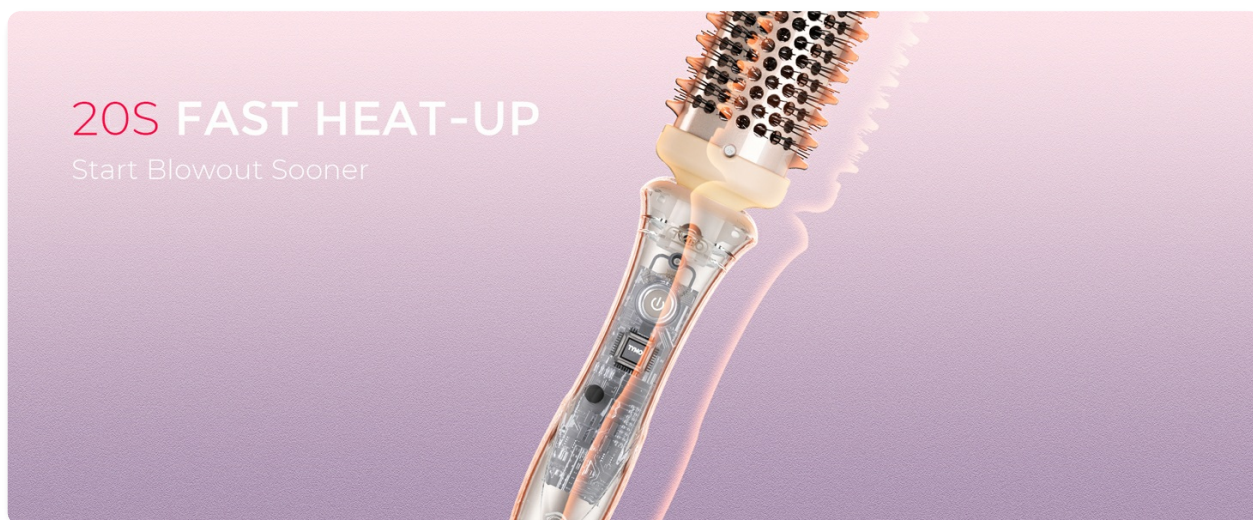


Figure 5: A cutaway view demonstrating the internal heating elements that enable the brush to heat up in 20 seconds.

5. OPERATING INSTRUCTIONS

For best results, ensure your hair is completely dry before using the thermal brush. Section your hair for easier styling.

Creating Volume and Blowout Styles

1. **Comb & Section:** Comb hair thoroughly. Take a 1-1.5 inch section of hair and spread it evenly on the brush.
2. **Twist:** Twist the brush while styling. Twist in and hold for 3-5 seconds. Pull out slightly, twist, and hold again.
3. **Clip:** After completing each curl, clip it in place to set the shape for at least 5 minutes.
4. **Repeat:** Repeat the twisting and clipping process for the desired result. Adjust as needed if the relaxed curls are not satisfying.



Figure 6: Step-by-step visual guide for achieving voluminous blowout styles using the thermal brush.

Your browser does not support the video tag.

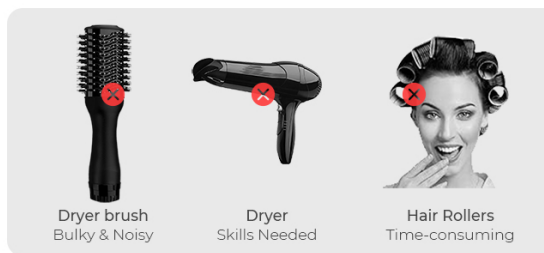
Video 1: Demonstrates a one-step blowout look using the TYMO STYLUX Thermal Brush, showing the ease of achieving voluminous hair.

Creating C-Curls and Straightening

1. **Section:** Section out a 1-1.5 inch section of hair and spread it evenly on the brush.
2. **Glide:** Starting at the root, slowly glide the brush down and straighten the hair.
3. **Twist:** Twist the brush while styling to create C curls at the ends.
4. **Repeat:** Repeat the twist for the desired result if the C curls are not satisfying.

HOW TO CREAT VOLUME?

Traditional VS. TYMO



TYMO
THERMAL BRUSH

One-Step
Zero noise
0.45 lb lightweight



Figure 7: Step-by-step visual guide for achieving C-curls and straightening hair using the thermal brush.

Your browser does not support the video tag.

6. MAINTENANCE

Proper maintenance ensures the longevity and performance of your TYMO STYLUX Thermal Brush.

- **Cleaning:** Ensure the brush is unplugged and completely cool before cleaning. Use a soft, damp cloth to wipe down the barrel and handle. Carefully remove any hair tangled in the bristles using a comb or your fingers. Do not use harsh chemicals or abrasive cleaners.
- **Storage:** Store the brush in a cool, dry place, away from moisture and direct sunlight. Do not wrap the power cord tightly around the appliance, as this can damage the cord.
- **Cord Care:** Regularly inspect the power cord for any signs of damage. If the cord is damaged, do not use the appliance and contact customer support.

7. TROUBLESHOOTING

If you encounter any issues with your TYMO STYLUX Thermal Brush, refer to the following common problems and solutions:

Problem	Possible Cause	Solution
Brush does not turn on.	Not properly plugged in; Power button not pressed correctly.	Ensure the brush is securely plugged into a working outlet. Long press the power button for 2 seconds to turn on.
Brush is not heating up sufficiently.	Incorrect temperature setting; Power button not held long enough to change settings.	Press the power button briefly to cycle through temperature settings (White, Yellow, Orange). Ensure the indicator light stops flashing, indicating it has reached the set temperature.
Hair is not curling/straightening effectively.	Hair is not dry; Sections are too large; Incorrect technique; Bristles not suitable for hair type.	Ensure hair is completely dry. Work with smaller 1-1.5 inch sections. Review the operating instructions for proper twisting and gliding techniques. For very thick or long hair, the 1.7-inch barrel may require more passes or smaller sections.
Product has a US plug socket and does not work with local outlets.	Regional plug incompatibility.	The brush has dual voltage (100V-240V). Use a suitable travel adapter for your region's electrical outlets.

8. SPECIFICATIONS



Attribute	Detail
Product Dimensions	2.2 x 12.28 x 2.2 inches
Item Model Number	HC305P
Manufacturer	TYMO
Wattage	88 watts
Power Source	Corded Electric
Material	Plastic
Color	Sakura Pink
Weight	12.7 ounces (0.49 lbs)
Voltage	Dual Voltage (100V-240V)





9. WARRANTY AND SUPPORT

Specific warranty details are not provided within this manual. For information regarding warranty coverage, product registration, or customer support, please visit the official TYMO website or contact their customer service directly. Keep your purchase receipt as proof of purchase.

© 2025 TYMO. All rights reserved.

Related Documents - HC305P

	<p>How to Use TYMO Hair Straightener Brush: Step-by-Step Guide</p> <p>Learn how to effectively use the TYMO Hair Straightener Brush with this concise, step-by-step guide. Achieve frizz-free, silky hair with easy-to-follow instructions for optimal results.</p>
	<p>TYMO Hair Straightener Brush FAQ and Usage Guide</p> <p>Frequently asked questions and usage instructions for the TYMO hair straightening brush, covering topics like hair types, temperature settings, cleaning, and guarantees.</p>

	<p>TYMO STYLUX PRO Thermal Brush User Manual and Safety Guide</p> <p>Comprehensive user manual for the TYMO STYLUX PRO Thermal Brush, covering safety instructions, usage guides, styling tips, specifications, and maintenance. Learn how to achieve professional hairstyles at home.</p>
	<p>TYMO Hair Straightener Brush: Frequently Asked Questions</p> <p>Answers to common questions about the TYMO hair straightener brush, covering usage, suitability for different hair types, safety, cleaning, and warranty.</p>
	<p>TYMO STYLUX Thermal Brush User Manual and Styling Guide</p> <p>Comprehensive user manual for the TYMO STYLUX Thermal Brush, including safety instructions, operating guide, styling tips, and specifications for achieving professional hair results at home.</p>
	<p>TYMO Volumizer HC300 Hot Air Brush User Manual Styling Guide</p> <p>Comprehensive user manual for the TYMO Volumizer HC300 hot air brush. Discover features, operating instructions, styling tips, maintenance advice, safety guidelines, and warranty information for achieving smooth, voluminous, and shiny hair.</p>