

## Lxlu B0FRFX3YZG

# Lxlu Electric Spin Scrubber User Manual

Model: B0FRFX3YZG

## INTRODUCTION

---

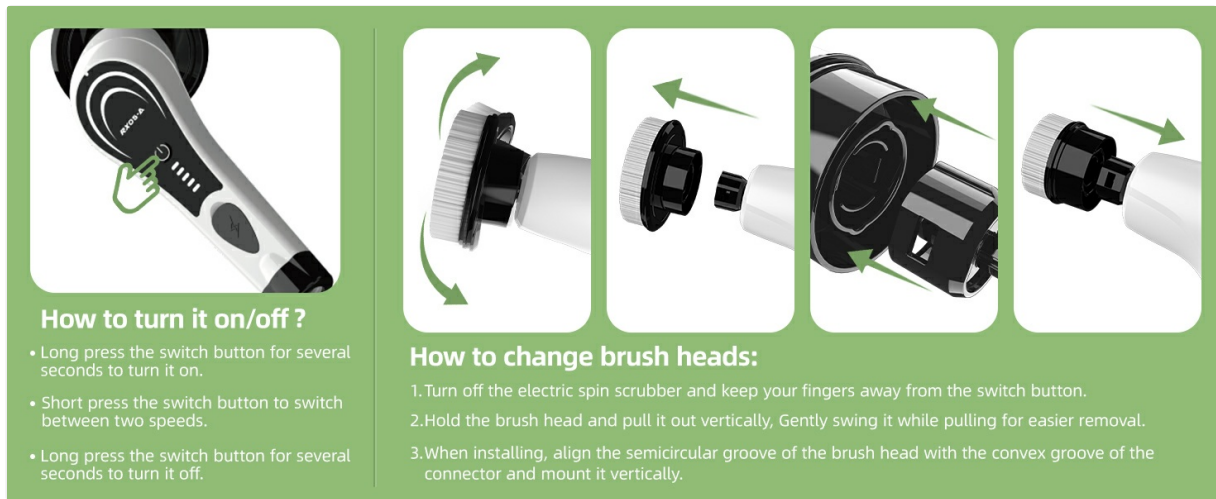
Thank you for choosing the Lxlu Electric Spin Scrubber. This device is designed to simplify your cleaning tasks with its powerful motor, versatile brush heads, and ergonomic design. Please read this manual carefully before use to ensure proper operation, maintenance, and to maximize the lifespan of your product.

## PACKAGE CONTENTS

---

Before you begin, please verify that all items listed below are included in your package:

- 1 x Electric Spin Scrubber Host
- 1 x Extension Rod
- 1 x Charging Cable
- 1 x Instruction Manual
- 1 x Main Handle
- 8 x Replaceable Brush Heads (Round brush, Corner brush, Small flat brush, Wide flat brush, Cloth brush, Fiber brush, Polishing soft brush, Sponge brush)



#### How to turn it on/off ?

- Long press the switch button for several seconds to turn it on.
- Short press the switch button to switch between two speeds.
- Long press the switch button for several seconds to turn it off.

#### How to change brush heads:

1. Turn off the electric spin scrubber and keep your fingers away from the switch button.
2. Hold the brush head and pull it out vertically, Gently swing it while pulling for easier removal.
3. When installing, align the semicircular groove of the brush head with the convex groove of the connector and mount it vertically.

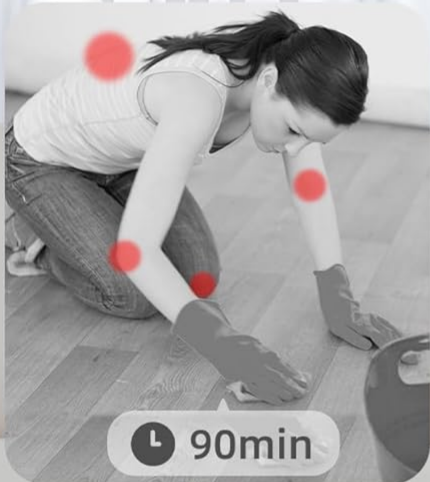
Figure 1: All components included in the Lxlu Electric Spin Scrubber package.

## PRODUCT FEATURES

- **Powerful Dual-Speed Motor:** Equipped with a 38W motor, offering two cleaning speeds: 400 RPM for daily cleaning and 480 RPM for deep cleaning.
- **8 Versatile Brush Heads:** Includes a variety of brushes for different surfaces and cleaning needs, such as round, flat, corner, sponge, fiber, soft, and cloth brushes.
- **IPX7 Waterproof Design:** The scrubber head is highly sealed to protect against water damage, allowing direct rinsing of brush heads. *Note: The main unit cannot be submerged in water.*
- **Adjustable & Lightweight Design:** Features an extendable stainless-steel handle (24.8 to 47.3 inches) for reaching high or low areas without bending. Weighs approximately 1 lb for easy handling.
- **Cordless Operation with Long Battery Life:** A large capacity battery provides up to 120 minutes of continuous use after a 3-hour rapid charge.

# No More Bending over

Save your back save your knees



30min

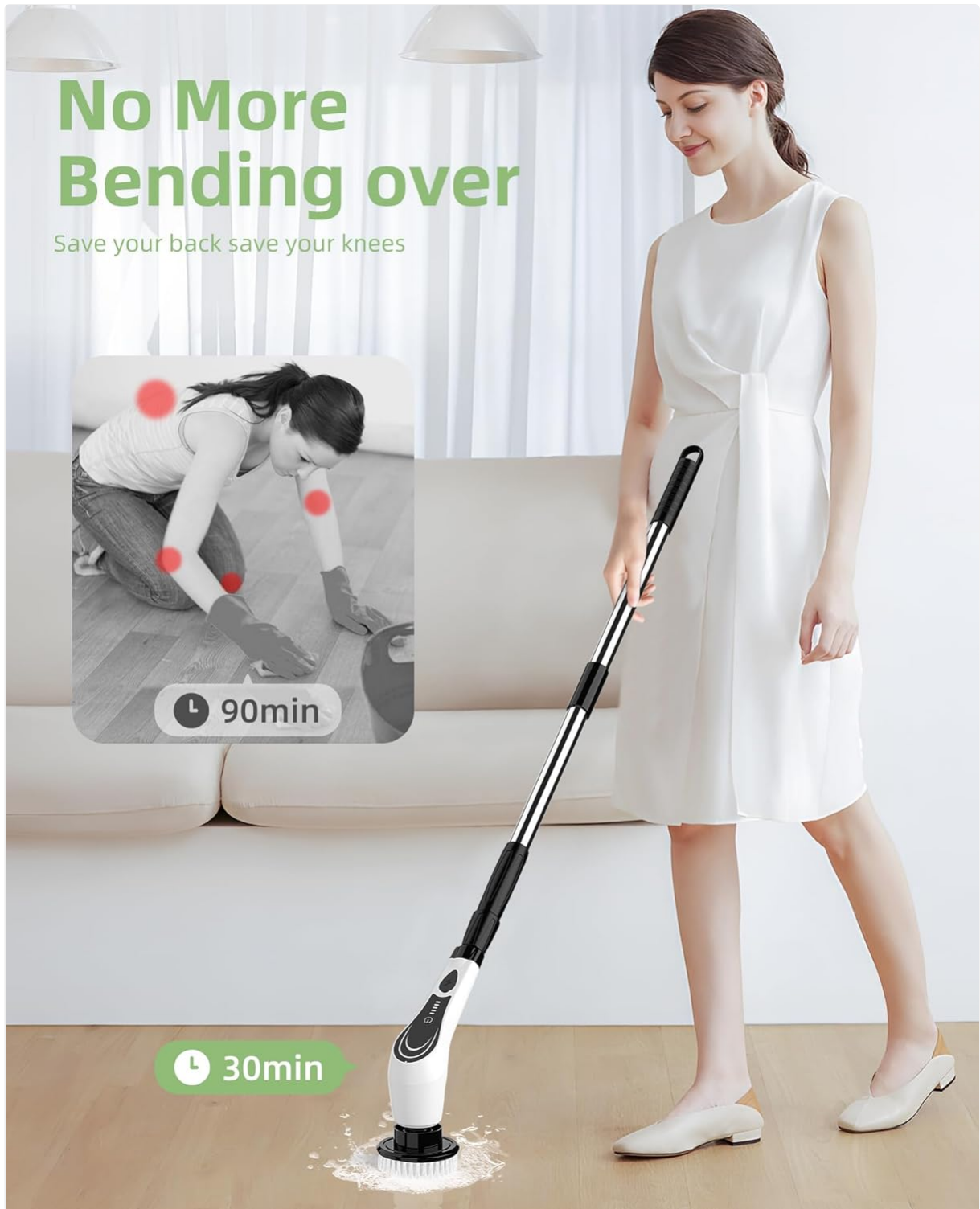


Figure 2: Dual-speed motor for varied cleaning intensity.

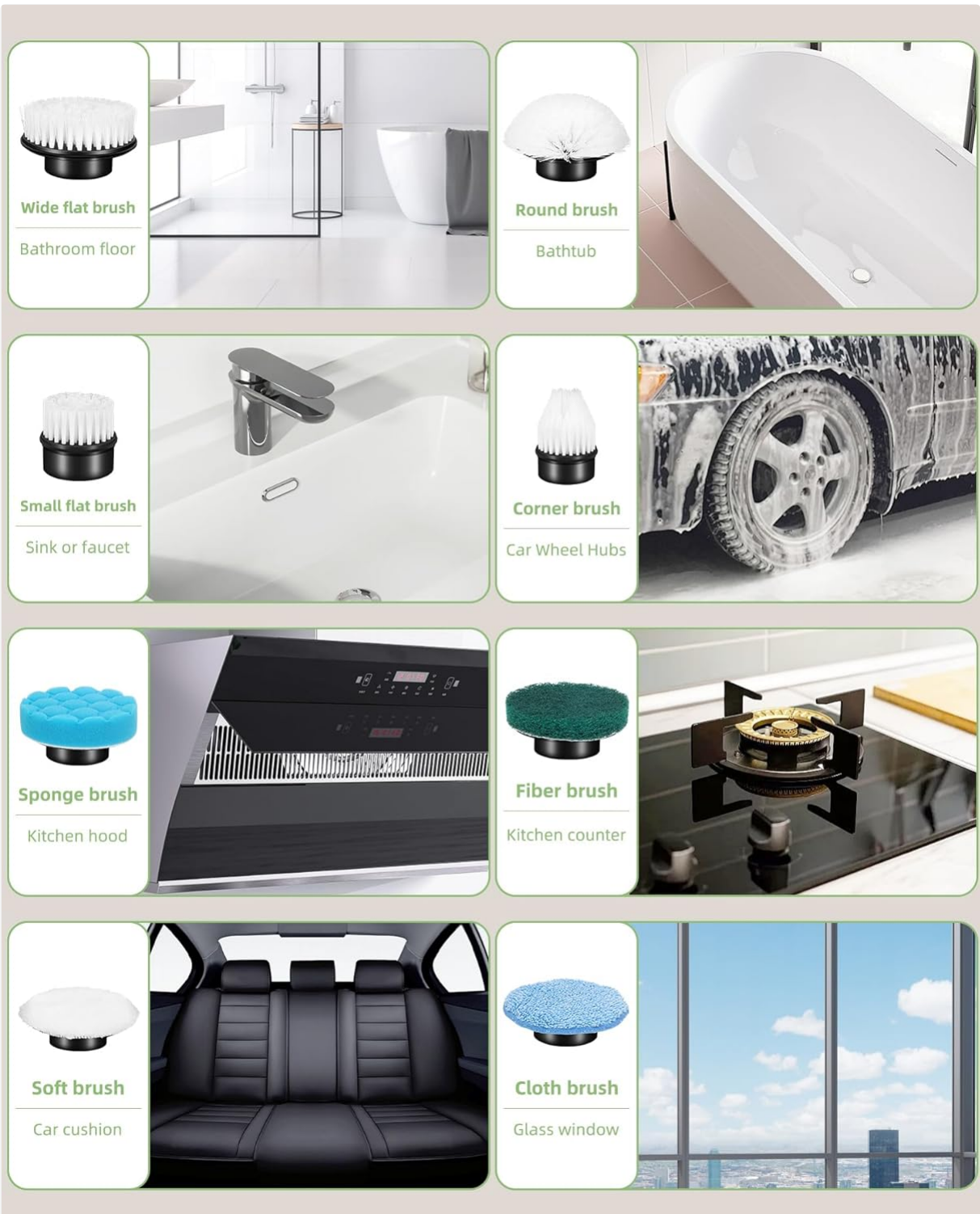


Figure 3: Ergonomic design with an extended handle to prevent bending.

# Detachable & Retractable

Stainless steel handle, sturdy and beautiful



Figure 4: Overview of the 8 versatile brush heads and their applications.

# Rechargeable and powerful

Real-time power display



Figure 5: Detachable and retractable handle for adjustable length.

# Products Accessories Showcase



Figure 6: Charging and battery specifications.

## SETUP AND ASSEMBLY

---

### Attaching the Extension Rod

1. Align the main handle of the scrubber with the extension rod.
2. Twist the rod clockwise until it is securely fastened.
3. To adjust the length, twist the locking mechanism on the rod, extend or retract to the desired length, and then twist to lock.

### Changing Brush Heads

1. Ensure the electric spin scrubber is turned off.
2. To remove a brush head, hold the brush head and pull it out vertically. Gently swing it while pulling for easier removal.
3. To install a new brush head, align the semicircular groove of the brush head with the convex groove of the connector on the scrubber.
4. Mount it vertically and press firmly until it clicks into place.

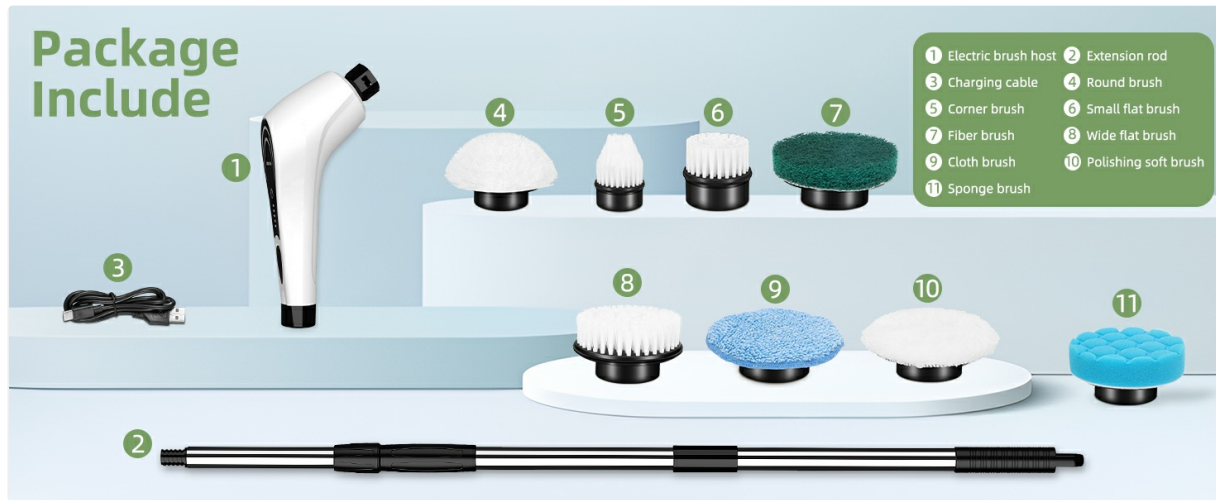


Figure 7: Instructions for operating the power button and changing brush heads.

## OPERATING INSTRUCTIONS

### Charging the Scrubber

1. Connect the charging cable to the charging port on the scrubber.
2. Plug the other end of the cable into a suitable USB power adapter (not included).
3. The battery indicator lights will illuminate during charging. A full charge takes approximately 3 hours.
4. Disconnect the charger once fully charged to preserve battery life.

### Power On/Off and Speed Selection

1. **To Turn On:** Long press the switch button for several seconds until the scrubber starts.
2. **To Change Speed:** Short press the switch button to toggle between the two speeds (400 RPM and 480 RPM).
3. **To Turn Off:** Long press the switch button for several seconds until the scrubber stops.

### Cleaning Tips

- Select the appropriate brush head for the surface you are cleaning.
- Apply a suitable cleaning solution to the surface or brush head.
- Start with the lower speed for general cleaning and switch to the higher speed for stubborn stains.
- Avoid applying excessive pressure, as the motor is designed to do the work.

## MAINTENANCE AND CARE

### Cleaning the Brush Heads

After each use, remove the brush head and rinse it directly under running water to remove any dirt or

cleaning solution residue. Allow the brush heads to air dry completely before storing.

## Cleaning the Main Unit and Handle

Wipe the main unit and handle with a damp cloth. Do not submerge the main unit in water. Ensure all parts are dry before storage.

## Storage

Store the Lxlu Electric Spin Scrubber in a cool, dry place, away from direct sunlight and extreme temperatures. Keep it out of reach of children.

## TROUBLESHOOTING

Problem	Possible Cause	Solution
Scrubber does not turn on.	Battery is depleted.	Charge the scrubber for at least 3 hours.
Scrubber stops during use.	Battery is low or excessive pressure is applied.	Recharge the battery. Reduce pressure during cleaning.
Brush head is loose or falls off.	Brush head not properly installed.	Ensure the brush head is aligned with the grooves and firmly clicked into place.
Reduced cleaning performance.	Brush head is worn out or dirty.	Clean the brush head or replace it with a new one.

## SPECIFICATIONS

Feature	Detail
Brand	Lxlu
Model Number	B0FRFX3YZG
Motor Power	38W
Speeds	2 (400 RPM, 480 RPM)
Battery Capacity	3000mAh
Charging Time	Approx. 3 hours
Working Time	Up to 120 minutes
Handle Material	Stainless Steel
Adjustable Handle Length	24.8 inches to 47.3 inches
Waterproof Rating	IPX7 (brush head only, main unit not submersible)
Product Dimensions	6"L x 3"W x 17"H (compact)
Material	Plastic, Stainless Steel

Feature	Detail
Included Components	Scrubber, Extension Rod, Charging Cable, 8 Brush Heads, Manual

## WARRANTY AND SUPPORT

---

Lxlu offers a **2-year extended protection plan** for this product. If any non-human issues occur within 2 years of purchase, please contact our customer service team for assistance.

Our dedicated professional after-sales team is ready to assist with any requests or concerns you may have. Please refer to your purchase documentation for contact information.