

pelsee P12 Plus

pelsee P12 Plus + 12" Bracket

USER MANUAL

1. Product Overview

The pelsee P12 Plus is a sophisticated mirror dash cam system designed to enhance driving safety and record your journeys. It features ultra-high-definition front footage and a clear rear view, integrated GPS for location and speed tracking, and built-in WiFi for convenient video access and sharing via a mobile application. The included 12-inch bracket ensures secure and easy installation.



Image: The pelsee P12 Plus mirror dash cam, showing its front and rear cameras, GPS module, and included 64GB memory card. The 12-inch bracket is also visible.

Key features include:

- **Mirror Dash Cam Front and Rear:** Captures ultra-high-definition front footage and clear rear view.
- **Integrated GPS:** Tracks your location and speed.
- **Built-in WiFi:** Allows for easy video access and sharing.
- **Easy Installation:** The included bracket facilitates quick and hassle-free setup.
- **Elegant Design:** Blends seamlessly with your vehicle's interior.
- **Secure Mounting:** The bracket keeps the mirror dash cam firmly in place, reducing movement and vibrations.

2. What's in the Box

Upon opening the package, please verify that all the following components are present:

- pelsee P12 Plus Mirror Dash Cam
- Rear Camera
- GPS Module
- 64GB Memory Card

- 12' Bracket (for mounting)
- Power Cable
- Rear Camera Cable
- Mounting Screws for Bracket

4K UHD



4K UHD Capture

					
Front 4K	Rear 1080p	Wi-Fi	12" Display	GPS Track	Parking Monitor

Image: The 12-inch bracket and its accompanying mounting screws, which are part of the product package.

3. Setup and Installation

The pelsee P12 Plus is designed for straightforward installation. Follow these steps to set up your dash cam:

1. **Bracket Installation:** The 12-inch bracket is specifically designed for secure mounting. Ensure your vehicle's existing mirror base is compatible with the provided bracket. It is recommended to compare your vehicle's mirror base with the examples provided in the product images to ensure compatibility before proceeding.



Image: Detailed dimensions of the 12-inch bracket, indicating its length and width for proper fitment.

► **The Pelsee Mount is specifically designed for this type of base. Kindly take a photo of your base and vehicle and forward them along to us before purchasing**

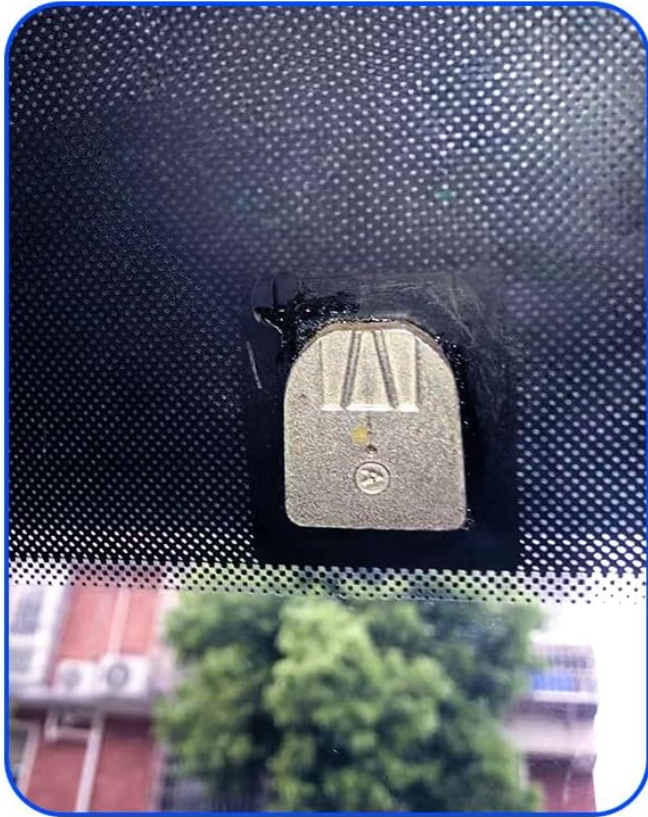


Image: Visual guide for compatible mirror base types on the windshield, crucial for correct bracket installation.

2. **Mounting the Dash Cam:** Once the bracket is securely installed, attach the pelsee P12 Plus mirror dash cam to the bracket. Ensure it is firmly in place to prevent vibrations during driving.
3. **Connect Power:** Connect the power cable to the dash cam and route it to your vehicle's power outlet (e.g., cigarette lighter socket).
4. **Install Rear Camera:** Mount the rear camera at the back of your vehicle, typically above the license plate or inside the rear window. Connect the rear camera cable to the main dash cam unit.
5. **Connect GPS Module:** Plug in the GPS module to the designated port on the dash cam and position it where it has a clear view of the sky for optimal signal reception.
6. **Insert Memory Card:** Insert the provided 64GB memory card into the dash cam's memory card slot.



✓ for 12" Mirror Dash Cam



Others ✓



Image: The pelsee P12 Plus mirror dash cam mounted in a vehicle, demonstrating its integrated appearance.

4. Operating Instructions

The pelsee P12 Plus is designed for intuitive operation. Here are the basic steps to get started:

- **Power On/Off:** The device will typically power on automatically when your vehicle starts and power off when the ignition is turned off.
- **Screen Display:** The 12-inch IPS display provides a wide view of both front and rear camera feeds. You can switch between views or display both simultaneously.



Image: The 12-inch display of the pelsee P12 Plus, showcasing its wide view capabilities.

- **Recording:** The dash cam automatically begins recording when powered on. It records in a loop, overwriting the oldest files when the memory card is full, unless the footage is locked.
- **Video Resolution:** The front camera records in 4K UHD (2160p), while the rear camera records in 1080p.

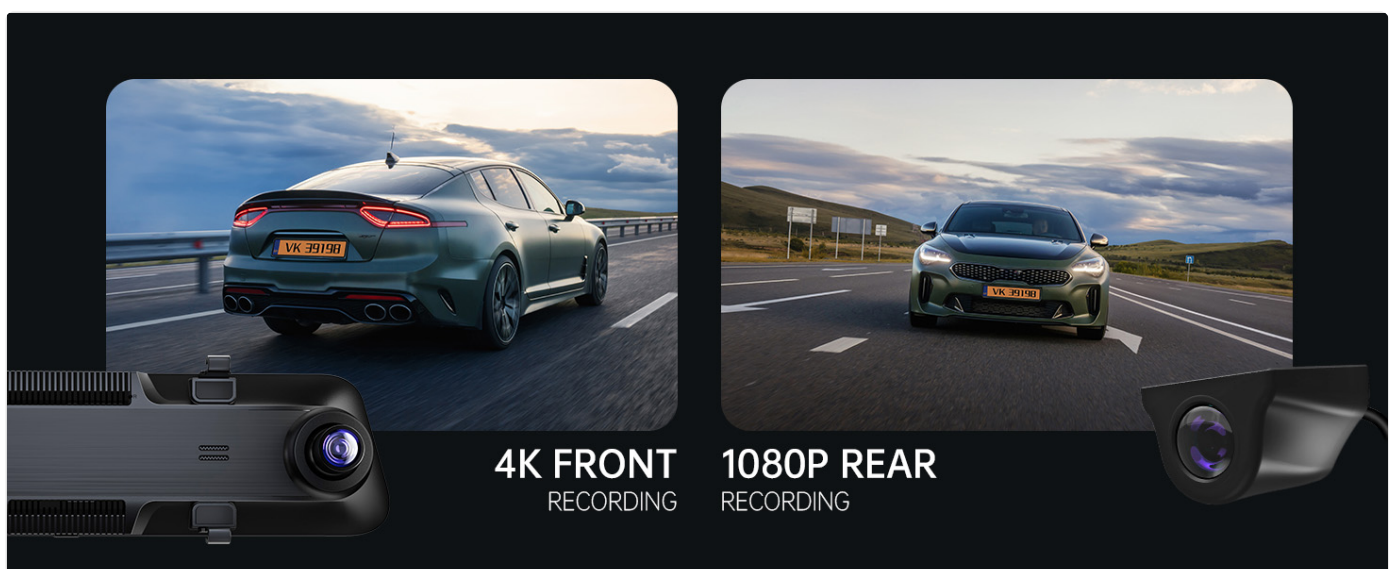


Image: Illustrates the difference between 4K front and 1080P rear recording quality.

- **Built-in WiFi and App Control:** Download the dedicated pelsee app on your smartphone (available on App Store and Google Play). Connect to the dash cam's WiFi network to easily view, download, and share recorded videos.

Built-in WiFi

Easily view, download and share videos



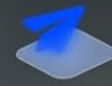
Replay



Preview



Download



Share



Image: A smartphone displaying the pelsee app, showing options to replay, preview, download, and share videos via built-in WiFi.



Image: The pelsee app interface on a smartphone, highlighting features like setup, replay, download, and sharing of videos.

5. Advanced Features

- **GPS Tracking:** The integrated GPS module records your driving route, speed, and location data, which can be viewed alongside your video footage through the mobile app or dedicated PC viewer.

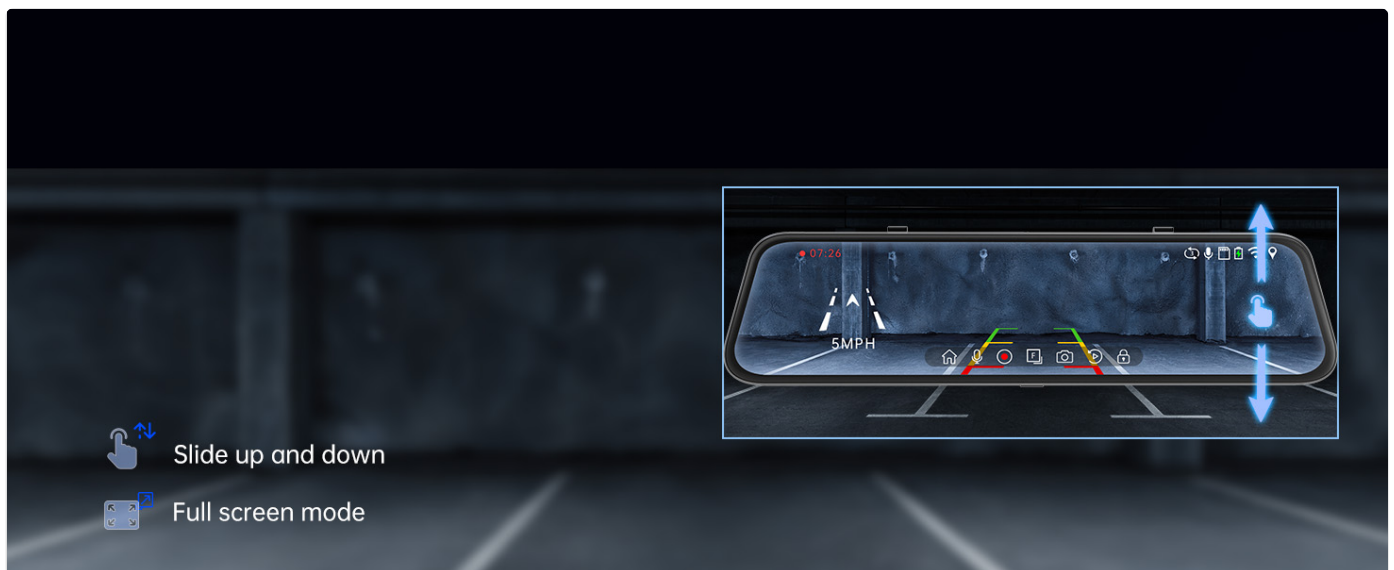


Image: Demonstrates how GPS tracking data is integrated with video, viewable on multiple devices.

- **ADAS (Advanced Driver-Assistance Systems):** The P12 Plus supports ADAS features to enhance driving safety by providing real-time alerts. These include:
 - Lane Departure Warning
 - Front Vehicle Start Alerts
 - Forward Collision Warning
 - Blind Spot Detection
 - Lane Change Assist

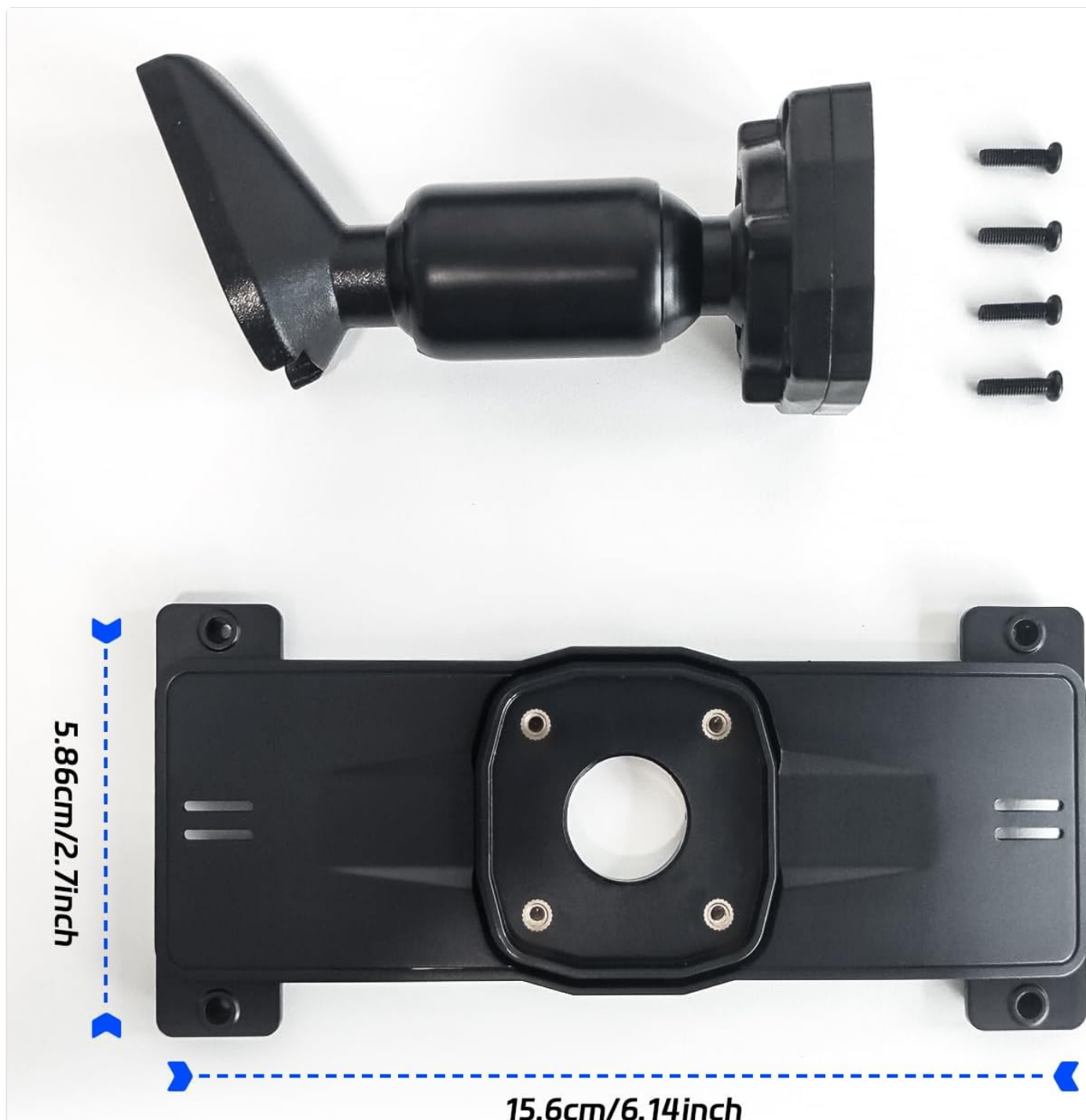


Image: Visual representation of ADAS features such as maintaining safe distance, lane departure warning, and blind spot detection.



Image: Icons detailing the various ADAS functions supported by the device.

- **Parking Monitor:** Provides 24-hour surveillance when your vehicle is parked. It can be activated by G-sensor (detecting impacts) or through time-lapse recording.



Image: Explains the G-sensor and Time-lapse modes for continuous parking monitoring.

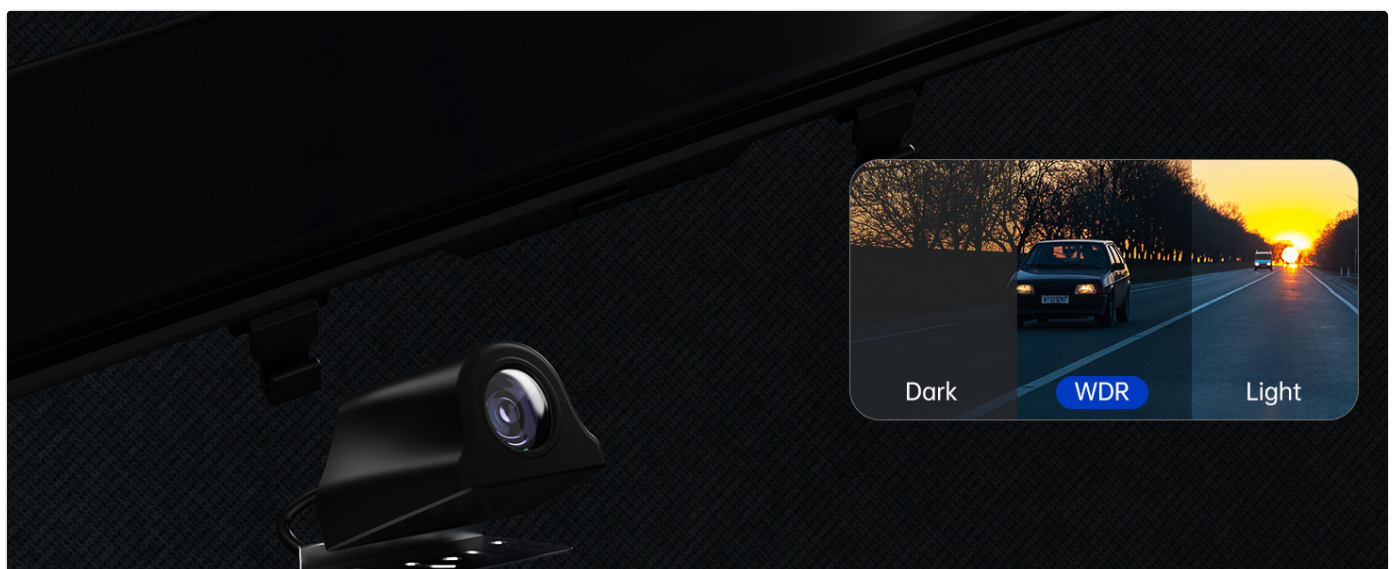


Image: Depicts the G-sensor automatically locking video footage during an impact.

- **WDR (Wide Dynamic Range):** Improves video quality in varying light conditions, ensuring clear recordings in both bright and dark areas.



Image: Shows how WDR technology enhances video clarity in challenging lighting environments.

- **Voice Control:** Operate certain functions of the dash cam using voice commands for hands-free convenience.



Image: Demonstrates voice commands for controlling the dash cam's display and recording functions.

- **Reversing Aid:** When the vehicle is in reverse, the display automatically shows the rear camera feed with guidelines to assist with parking.
- **Screen Controls:** Easily adjust the view by sliding up and down on the screen or switch to full-screen mode.



Image: Explains how to use touch gestures on the screen for view adjustment and full-screen display.

- **Image Flip:** Supports vertical and mirror flip options for the camera display, useful for various mounting orientations.



Image: Illustrates the vertical and mirror flip options for the camera display.

6. Maintenance

To ensure the longevity and optimal performance of your pelsee P12 Plus dash cam, follow these maintenance guidelines:

- **Cleaning the Lens:** Regularly clean the front and rear camera lenses with a soft, lint-free cloth to ensure clear recordings. Avoid abrasive materials that could scratch the lens.
- **Screen Care:** Use a microfiber cloth to gently wipe the 12-inch display. Do not use harsh chemicals or sprays directly on the screen.
- **Memory Card Management:** Periodically format the memory card (at least once a month) within the dash cam's settings to prevent data corruption and ensure smooth recording. Back up any important footage before formatting.
- **Cable Inspection:** Check all cables (power, rear camera, GPS) for any signs of wear or damage. Replace damaged cables immediately to prevent malfunction.
- **Temperature Control:** Avoid exposing the dash cam to extreme temperatures for prolonged periods. If parked in direct sunlight, consider using a sunshade.

7. Troubleshooting

If you encounter any issues with your pelsee P12 Plus, refer to the following common troubleshooting steps:

- **Device Not Powering On:**
 - Ensure the power cable is securely connected to both the dash cam and the vehicle's power outlet.
 - Check if the vehicle's power outlet is functioning correctly.
- **Recording Issues (e.g., freezing, corrupted files):**
 - Format the memory card within the dash cam's settings.
 - Ensure you are using a high-speed (Class 10 or U3) memory card.
 - Try a different memory card to rule out card issues.
- **GPS Signal Not Found:**
 - Ensure the GPS module is connected and placed in an area with a clear view of the sky (e.g., on the dashboard, away from obstructions).
 - Allow a few minutes for the device to acquire a GPS signal, especially after initial setup or moving to a new location.
- **WiFi Connectivity Problems:**
 - Ensure WiFi is enabled on the dash cam and your smartphone.
 - Restart both the dash cam and your smartphone.
 - Ensure you are within close proximity to the dash cam when connecting via WiFi.
- **Rear Camera Not Displaying:**
 - Check the connection of the rear camera cable to both the rear camera and the main dash cam unit.
 - Ensure the rear camera lens is clean and unobstructed.

If the issue persists after attempting these steps, please contact pelsee customer support for further assistance.

8. Specifications

Feature	Description
Brand	pelsee
Model Name	P12 Plus
Screen Size	12 Inches
Front Video Capture Resolution	2160p (4K UHD)
Rear Video Capture Resolution	1080p
Connectivity Technology	Wi-Fi
Special Features	Built-In WiFi, GPS Tracking, ADAS Support, Parking Monitor, Voice Control, WDR
Control Method	Touch

Included Components	WiFi, 12' Bracket
Orientation	Drivers Side
Vehicle Service Type	Car
ASIN	B0DFY3JFF9
Date First Available	June 22, 2024

9. Warranty and Support

For warranty information or technical support regarding your pelsee P12 Plus + 12" Bracket, please contact the seller, **Pelsee US**, directly through the platform where you purchased the product. They can provide assistance with product inquiries, troubleshooting, and warranty claims.

Please retain your proof of purchase for any warranty-related services.

© 2024 pelsee. All rights reserved.

Documents - pelsee – P12 Plus

FCC TEST REPORT	
FCC ID: 2BAWC-P12PROMAX	
Product	Dash Cam
Model Name	P12 Pro Max,P12 Pro, P12 Pro, P12 Pro, P12 Ultra, P10 Ultra, P12 Plus, P10 Plus, P10 Elite, P12 Elite, P12 Pro Max, P10 Pro Max, P12 Pro Plus
Brand	Pelsee
Report No.	NCT24004285E-FC03
Prepared for	
Shenzhen Vycol-Glint Innovations Technology co., Ltd	
NO.28 Gangsheng Road, Building A, Room 509 Bao'an District, Shenzhen, Guangdong	
Prepared by	
Shenzhen NCT Testing Technology Co., Ltd.	
A101&2F BB, Fuyao 6th Area, Yixian Community, Futian Street, Baoan District, Shenzhen, People's Republic of China	
TEL: 400-8868419	
FAX: 86-755-27796922	

[pdf] Test Report SAR Rating

RF Exposure MPE Shenzhen Vycol Glint Innovations Technology co Ltd P12PROMAX Dash Cam 2BAWC 2BAWCP12PROMAX p12promax
FCC TEST REPORT FCC ID: 2BAWC-P12PROMAX Product Model Name Brand
Report No. : Dash Cam P12 Pro Max,P10, P10 Pro, P12, P12 Pro, P12 Ultra, P10 Ultra, : **P12 Plus**, P10 Plus, P10 Elite, P12 Elite, P12 Pro Max , P10 Pro Max, P12 Pro Plus : Pelsee : NCT24004285E-FC03 Prepared for Shenzhen Vycol-Glint I...
lang:en score:17 filesize: 164.92 K page_count: 7 document date: 2024-01-24

FCC TEST REPORT	
FCC ID: 2BAWC-P12PROMAX	
Product	Dash Cam
Model Name	P12 Pro Max, P10, P10 Pro, P12, P12 Pro, P12 Ultra, P10 Ultra, P12 Plus, P10 Plus, P10 Elite, P12 Elite, P12 Pro Max, P10 Pro Max, P12 Pro Plus
Brand	Pelsee
Report No.	NCT24004285E-FC01
Prepared for	
Shenzhen Vycol-Glint Innovations Technology co., Ltd	
NO.28 Gangsheng Road, Building A, Room 509 Bao'an District, Shenzhen, Guangdong	
Prepared by	
Shenzhen NCT Testing Technology Co., Ltd.	
A101&2F BB, Fuyao 6th Area, Yixian Community, Futian Street, Baoan District, Shenzhen, People's Republic of China	
TEL: 400-8868419	
FAX: 86-755-27796922	

Page 1 of 77

[pdf] Test Report

Wi Fi Test Report part 1 Shenzhen Vycol Glint Innovations Technology co Ltd P12PROMAX Dash Cam 2BAWC 2BAWCP12PROMAX p12promax
FCC TEST REPORT FCC ID: 2BAWC-P12PROMAX Product Model Name Brand
Report No. : Dash Cam P12 Pro Max, P10, P10 Pro, P12, P12 Pro, P12 Ultra, P10 Ultra, : **P12 Plus**, P10 Plus, P10 Elite, P12 Elite, P12 Pro Max , P10 Pro Max, P12 Pro Plus : Pelsee : NCT24004285E-FC01 Prepared for Shenzhen Vycol-Glint...
lang:en score:11 filesize: 3.96 M page_count: 68 document date: 2024-01-22

FCC TEST REPORT
FCC ID: 2BAWC-P12PROMAX

Product	- Dash Cam
Model Name	- P12 Pro Max,P10, P10 Pro, P12, P12 Pro, P12 Ultra, P10 Ultra, P12 Plus, P10 Plus, P10 Elite, P12 Elite, P12 Pro Max, P10 Pro Max, P12 Pro Plus
Brand	- Pelsee
Report No.	- NCT24004285E-FC02
Prepared for	
Shenzhen Vycol Glint Innovations Technology co. Ltd	
NO.28 Gangcheng Road, Building A, Room 209 Bao'an District, Shenzhen, Guangdong	
Prepared by	
Shenzhen NCT Testing Technology Co., Ltd.	
A101&3F B2, Fuyao 6th Area, Xindian Community, Futai Street, Baoan District, Shenzhen, People's Republic of China	
TEL: 400-8868-419	
FAX: 86-755-27790602	

[pdf] Test Report

5G Test Report part 1 Shenzhen Vycol Glint Innovations Technology co ltd P12PROMAX Dash Cam
2BAWC 2BAWCP12PROMAX p12promax

FCC TEST REPORT FCC ID: 2BAWC-P12PROMAX Product Model Name Brand
Report No. : Dash Cam P12 Pro Max,P10, P10 Pro, P12, P12 Pro, P12 Ultra, P10
Ultra, : **P12 Plus**, P10 Plus, P10 Elite, P12 Elite, P12 Pro Max , P10 Pro Max, P12
Pro Plus : Pelsee : NCT24004285E-FC02 Prepared for Shenzhen Vycol-Glint I...
lang:en score:7 filesize: 3.99 M page_count: 96 document date: 2024-01-22