

SUNPOW MD14, GD01

SUNPOW Metal Detector MD14 & Pinpointer GD01 User Manual

Your Guide to Effective Treasure Hunting

1. INTRODUCTION

Thank you for choosing the SUNPOW Metal Detector MD14 and Metal Detector Pinpointer GD01. This comprehensive combo is designed for both adults and kids, offering high accuracy and ease of use for all your treasure hunting adventures. This manual provides detailed instructions for the proper assembly, operation, maintenance, and troubleshooting of your new devices.

Please read this manual carefully before using the products to ensure safe and optimal performance. Keep this manual for future reference.

Safety Precautions

- Always obtain permission before searching on private property.
- Avoid searching in areas where underground cables or pipes may be present.
- Exercise caution when digging to avoid injury or damage to property.
- Do not operate the devices near live electrical wires or in thunderstorms.
- Keep batteries out of reach of children.

2. PRODUCT OVERVIEW

The SUNPOW MD14 Metal Detector and GD01 Pinpointer are engineered to provide an exceptional metal detecting experience. The MD14 features a large backlit LCD, multiple detection modes, and a robust design, while the GD01 offers precise pinpointing with its 360° detection and rechargeable battery.



Figure 2.1: Complete SUNPOW MD14 and GD01 Combo with included accessories.

Key Features

- **MD14 Metal Detector:** 12-inch waterproof coil, 2x backlit LCD display, advanced DSP chip, 5 detection modes, adjustable length (19-59 inches), sturdy spiral structure.
- **GD01 Pinpointer:** IP68 waterproof rating, 360° detection, 4 operating modes (Audio, Vibrate, Audio + Vibrate, Mute), handheld design with LCD screen, rechargeable lithium battery.

3. SETUP AND ASSEMBLY

3.1 MD14 Metal Detector Assembly

1. Attach the search coil to the lower stem using the provided bolt and nut. Ensure it is securely fastened but do not overtighten.
2. Connect the lower stem to the middle stem.
3. Slide the control box onto the upper stem and secure it.
4. Insert the assembled stem into the control box unit. The quick-lock design allows for fast installation and easy

adjustments.

5. Wrap the coil cable around the stem, ensuring it is not too tight, and plug the connector into the port on the control box.
6. Adjust the stem length to a comfortable position using the quick-lock mechanism. The MD14 features a durable helical structure for enhanced stability.



Figure 3.1: MD14 Metal Detector's durable helical structure and convenient quick-lock design for easy assembly and adjustment.

3.2 GD01 Pinpointer Charging

The GD01 Pinpointer comes with a rechargeable lithium battery. Before first use, fully charge the device.

1. Locate the charging port on the GD01 pinpointter.
2. Connect the provided USB charging cable to the pinpointter and a suitable USB power source (e.g., computer USB port, wall adapter).
3. The charging indicator will illuminate. Once fully charged, the indicator will change or turn off. A full charge provides up to 12 hours of continuous detection.

RECHARGEABLE 800MAH LITHIUM BATTERY

Up to **12 Hours** of Continuous
Detection



Figure 3.2: The GD01 Pinpointer features an 800mAh rechargeable lithium battery for extended use.

4. OPERATING INSTRUCTIONS

4.1 MD14 Metal Detector Operation

ULTIMATE CONTROL EXPERIENCE



LCD Backlight

Large 2X Screen

Symmetrical Gamepad

New ID Design

Figure 4.1: The MD14's control panel with a large 2X backlit LCD screen for ultimate control and visibility.

1. **Power On/Off:** Press and hold the POWER button to turn the detector on or off. The backlit LCD display will illuminate.
2. **Detection Modes:** Press the MODE button to cycle through the available detection modes. The MD14 offers 5 distinct modes:
 - **ALL METAL Mode:** Detects all types of metals without discrimination. Signals on every occasion it detects any metal.
 - **DISC Mode:** Allows you to eliminate unwanted metal targets in sequence.

- **JEWELRY Mode:** Specifically focused on finding jewelry.
 - **MEMORY Mode:** Explores only the remembered metals.
 - **PP Mode (Pinpoint):** Enables you to pinpoint the exact location of the detected target.
3. **Sensitivity Adjustment:** Use the SENS +/- buttons to adjust the detector's sensitivity. Higher sensitivity increases detection depth but may also increase false signals.
 4. **Volume Control:** Use the VOL +/- buttons to adjust the audio output volume.
 5. **Target Identification:** The LCD screen provides visual cues for target identification, including target depth and probable metal type.



Figure 4.2: Understanding the MD14's five detection modes for various treasure hunting scenarios.

DIVERSE SCREEN DISPLAY

Easy and **Intuitive**
Control



Figure 4.3: The GD01 Pinpointer's intuitive screen display provides clear feedback on its status and detection.

1. **Power On/Off:** Press and hold the power button to turn the pinpointer on or off.
2. **Detection:** The GD01 offers high sensitivity and 360° side-scan capability, detecting all types of metals including gold, platinum, nickel, copper, and iron, with up to 6 inches detection depth.
3. **Operating Modes:** Press the mode button to switch between the 4 available modes:
 - **Audio Mode:** Provides audible alerts when metal is detected.
 - **Vibrate Mode:** Provides tactile vibration alerts.

- **Audio + Vibrate Mode:** Combines both audio and vibration alerts.
- **Mute Mode:** Disables audio alerts, relying solely on vibration.

4. **Sensitivity Level:** The display indicates the current sensitivity level. Adjust as needed for precise pinpointing.

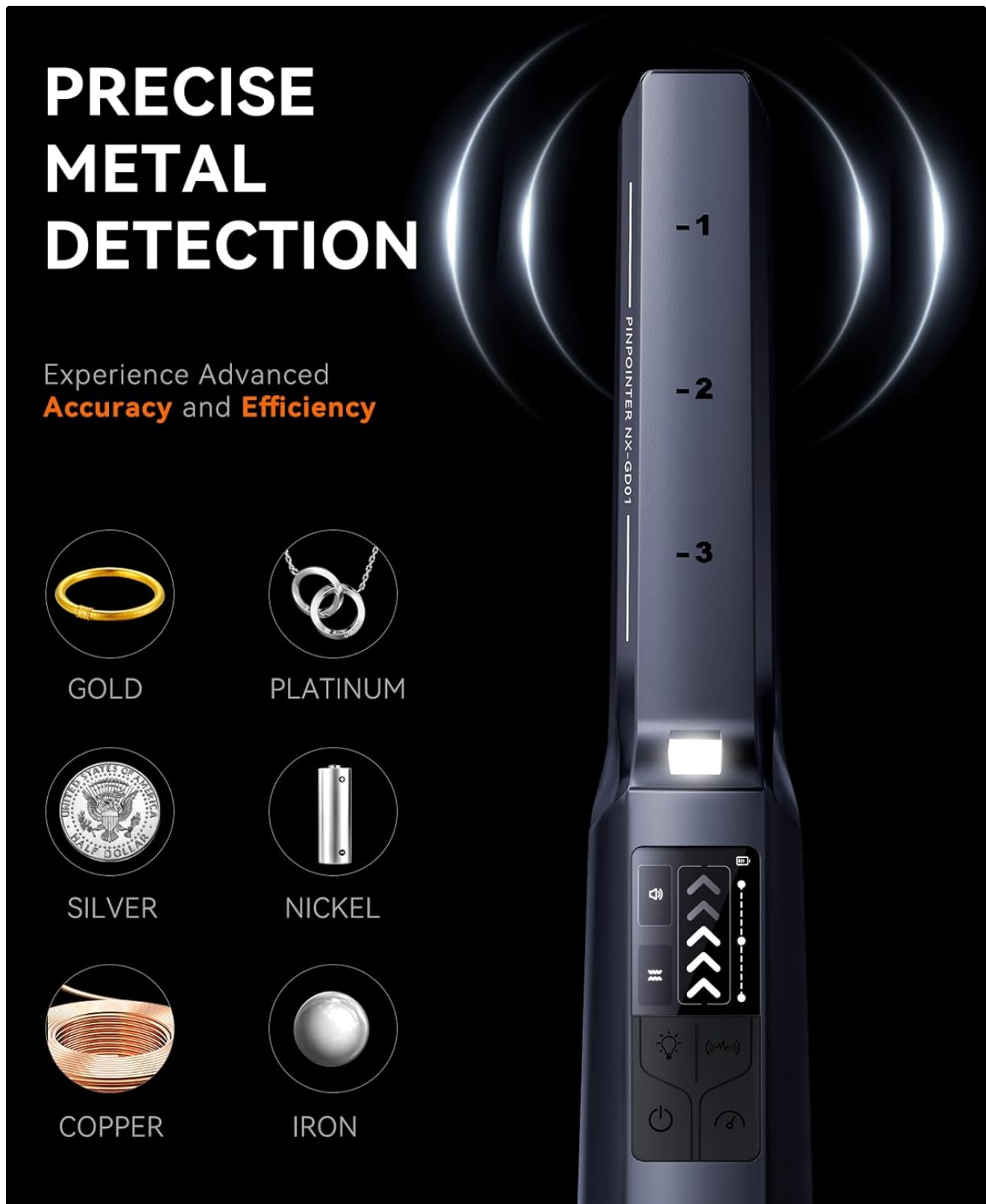


Figure 4.4: The GD01 Pinpointer's precise detection capabilities for various metal types.

5. MAINTENANCE

Proper maintenance ensures the longevity and optimal performance of your SUNPOW metal detector and pinpointer.

- **Cleaning:** After each use, especially in sandy or muddy conditions, wipe down the devices with a damp cloth. Do not use abrasive cleaners or solvents. The MD14's 12-inch coil and GD01's IP68 rating allow for easy cleaning of the waterproof parts.
- **Storage:** Store the devices in a cool, dry place away from direct sunlight and extreme temperatures. If storing for an extended period, remove batteries from the MD14.
- **Battery Care (GD01):** To prolong the life of the GD01's rechargeable lithium battery, avoid fully discharging it frequently. Charge it regularly, even if not in use for a long time.
- **Coil Protection:** Avoid striking the search coil against hard objects.

6. TROUBLESHOOTING

If you encounter issues with your SUNPOW metal detector or pinpointer, refer to the following common problems and solutions:

Problem	Possible Cause	Solution
MD14 does not power on.	Low or dead batteries; incorrect battery installation.	Replace batteries; ensure correct polarity.
MD14 gives false signals.	High sensitivity setting; electromagnetic interference; mineralized ground.	Reduce sensitivity; move away from power lines/electronics; use DISC mode.
GD01 does not detect metals.	Low battery; incorrect mode; device malfunction.	Recharge GD01; cycle through modes; contact support if issue persists.
GD01 vibrates but no audio.	Mute mode selected.	Switch to Audio or Audio + Vibrate mode.

7. SPECIFICATIONS

Detailed technical specifications for the SUNPOW MD14 Metal Detector and GD01 Pinpointer:

Feature	Specification
Brand	SUNPOW
MD14 Power Source	Battery Powered (Batteries Required: Yes)
GD01 Power Source	Rechargeable Lithium Battery (800mAh)
Material	Aluminum
MD14 Extended Length	59 Inches (Adjustable Length: Yes)
MD14 Search Coil Size	12 Inches
MD14 Operating Frequency	7 KHz
GD01 International Protection Rating	IP68
GD01 Detection Depth	Up to 6 Inches

Feature	Specification
Recommended Uses	Metal Detection
Manufacturer	SUNPOW
Item Model Numbers	MD14, GD01

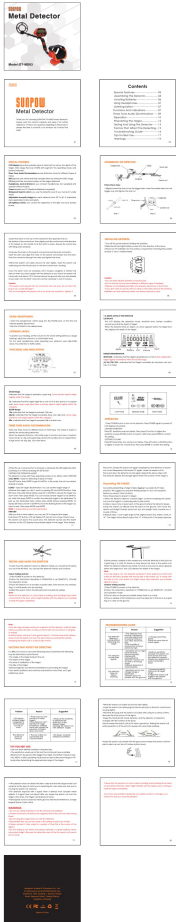
8. WARRANTY AND SUPPORT

SUNPOW is committed to providing high-quality products and customer satisfaction. While specific warranty details are not provided in this manual, please retain your proof of purchase for any warranty claims.

For technical support, troubleshooting assistance, or warranty inquiries, please contact SUNPOW customer service through the retailer where you purchased the product or visit the official SUNPOW website for contact information.

We value your feedback and are here to help you make the most of your SUNPOW Metal Detector MD14 and Pinpointer GD01.

Related Documents - MD14, GD01

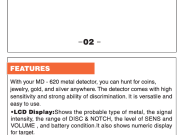
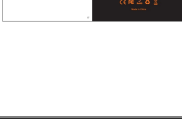
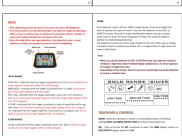


[SUNPOW OT-MD03 Metal Detector User Manual for Adults & Kids](#)

Comprehensive user manual for the SUNPOW OT-MD03 Metal Detector. Learn how to use this high-accuracy device, featuring an LCD display, pinpoint function, DISC mode, and a waterproof search coil, for metal detecting adventures.

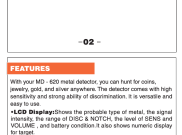


Contents	
Page	Page
1	1
2	2
3	3
4	4
5	5
6	6
7	7
8	8
9	9
10	10
11	11
12	12
13	13
14	14
15	15
16	16
17	17
18	18
19	19
20	20
21	21
22	22
23	23
24	24
25	25
26	26
27	27
28	28
29	29
30	30
31	31
32	32
33	33
34	34
35	35
36	36
37	37
38	38
39	39
40	40
41	41
42	42
43	43
44	44
45	45
46	46
47	47
48	48
49	49
50	50
51	51
52	52
53	53
54	54
55	55
56	56
57	57
58	58
59	59
60	60
61	61
62	62
63	63
64	64
65	65
66	66
67	67
68	68
69	69
70	70
71	71
72	72
73	73
74	74
75	75
76	76
77	77
78	78
79	79
80	80
81	81
82	82
83	83
84	84
85	85
86	86
87	87
88	88
89	89
90	90
91	91
92	92
93	93
94	94
95	95
96	96
97	97
98	98
99	99
100	100



SUNPOW OT-MD02 Metal Detector User Manual

Comprehensive user manual for the SUNPOW OT-MD02 metal detector, detailing its features, operation, specifications, and troubleshooting tips for hobbyists and enthusiasts.



Super Slow Sweep Identification: Switch to a very slow sweep of the search coil to discriminate different types of metal.

Headphone Jack: Connect headphones of 3.5mm and operate without trouble.

Headset Search coil: Use the detector even if you must put it under a shower cap.

Adjustable Shaft: Adjust the length of shaft for comfortable use.

Power: Your metal detector requires two 9-volt alkaline batteries.

-03-

PREPARATION



STEP 1: Your MD-620 detector requires no assembly or tools. Simply remove the detector from the box.



-04-

STEP 2: Turn the detector 180 degrees as shown in the figure.



STEP 3: Press down the L&R LOCK button to release the handle.



-05-

STEP 4: Slide out the antenna to the desired length (typically just under your elbow). Fully extend the lower shaft to the desired length for your height.



BATTERIES

• Please use two 9V alkaline batteries.

• Open the battery cover and install the battery according to the polarity sign on the battery box.

• Recommended types of 9V batteries: properly name the battery or turn them.

Caution:

- 1. Do not mix the old and new batteries or different types of batteries.
- 2. Do not touch the new alkaline batteries of exposed area.
- 3. If you don't plan to use the unit for a week or more time, remove the batteries and use new elements that can destroy electronic parts.
- 4. If the battery indicator on the LCD lights up, replace the battery.

-06-

USING HEADPHONES

It is recommended to choose the headphones with volume control. Insert the headphones 3.5mm plug into the PHONES jack. At this time the internal speaker disconnects.

Listening Safety

1. To protect your hearing, set the volume to the lowest setting when you begin listening and adjust the volume to a comfortable level.

2. Do not listen at extremely high volume levels. Extended high volume listening can lead to permanent hearing loss.

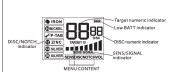
3. Do not wear headphones while operating your detector near high traffic areas. Pay attention to traffic safety.

INSTRUCTIONS FOR CONTROL PANEL



-07-

1. LCD DISPLAY



1. CONTROL BUTTONS

• MENU: Press MENU to select VOLUME, SERIAL, DISC, NOTCH.

• VOLUME: Press MENU to select VOLUME. Then press and hold the VOL+ button to adjust the volume. The volume will be displayed on the LCD.

• SERIAL: Press MENU to select SERIAL. Then press and hold the SERIAL button to adjust the serial number. The serial number will be displayed on the LCD.

• DISC: Press MENU to select DISC. Then press and hold the DISC button to adjust the disc. The disc will be displayed on the LCD.

• NOTCH: Press MENU to select NOTCH. Then press and hold the NOTCH button to adjust the notch. The notch will be displayed on the LCD.

• POWER: Press the power switch to turn on/off the detector.

-08-

2. BACKLIGHT SWITCH

Press the backlight switch to turn on/off the backlight of the display.

3. MEMORY

The detector will memorize all the settings before power is off.

TARGET INDICATIONS

1. Numerical ranges of targets:

SEARCH	DETECT
1-4	10-15
5-8	15-20
9-12	20-25
13-16	25-30
17-20	30-35
21-24	35-40
25-28	40-45
29-32	45-50
33-36	50-55
37-40	55-60
41-44	60-65
45-48	65-70
49-52	70-75
53-56	75-80
57-60	80-85
61-64	85-90
65-68	90-95
69-72	95-100

Note: There are a wide variety of metals and no target can be identified for certain until uncovered. The table is a general reference only.

2. Type of target

• DETECT: indicates that the target is probably iron.

• DETECT: indicates that the target is probably steel or a metal. Some iron and steel targets appear within this category.

• DETECT: indicates that the target is probably a pull tab or an aluminum can. Some small pull tabs appear within this category.

• DETECT: indicates that the target is probably a coin of 1c or 5c or 10c or 20c or 50c. Some small coins appear within this category.

• DETECT: indicates that the target might be a coin of 1c. Some large rough gold items might appear within this category.

• DETECT: indicates that the target is probably 25c or a silver coin.

-09-

3. Tunes

The detector comes with three tones for different types of metal. But the best to audio identification system provides a unique tone for each of three categories of metal. This makes it easier to identify the metal being detected.

A low tone is for NON-FERROUS, a high tone is for FERROUS, and a medium tone is for 100-200 Hz. (100-200 Hz is for 100-200 Hz, 200-300 Hz is for 200-300 Hz, 300-400 Hz is for 300-400 Hz, 400-500 Hz is for 400-500 Hz, 500-600 Hz is for 500-600 Hz, 600-700 Hz is for 600-700 Hz, 700-800 Hz is for 700-800 Hz, 800-900 Hz is for 800-900 Hz, 900-1000 Hz is for 900-1000 Hz, 1000-1100 Hz is for 1000-1100 Hz, 1100-1200 Hz is for 1100-1200 Hz, 1200-1300 Hz is for 1200-1300 Hz, 1300-1400 Hz is for 1300-1400 Hz, 1400-1500 Hz is for 1400-1500 Hz, 1500-1600 Hz is for 1500-1600 Hz, 1600-1700 Hz is for 1600-1700 Hz, 1700-1800 Hz is for 1700-1800 Hz, 1800-1900 Hz is for 1800-1900 Hz, 1900-2000 Hz is for 1900-2000 Hz, 2000-2100 Hz is for 2000-2100 Hz, 2100-2200 Hz is for 2100-2200 Hz, 2200-2300 Hz is for 2200-2300 Hz, 2300-2400 Hz is for 2300-2400 Hz, 2400-2500 Hz is for 2400-2500 Hz, 2500-2600 Hz is for 2500-2600 Hz, 2600-2700 Hz is for 2600-2700 Hz, 2700-2800 Hz is for 2700-2800 Hz, 2800-2900 Hz is for 2800-2900 Hz, 2900-3000 Hz is for 2900-3000 Hz, 3000-3100 Hz is for 3000-3100 Hz, 3100-3200 Hz is for 3100-3200 Hz, 3200-3300 Hz is for 3200-3300 Hz, 3300-3400 Hz is for 3300-3400 Hz, 3400-3500 Hz is for 3400-3500 Hz, 3500-3600 Hz is for 3500-3600 Hz, 3600-3700 Hz is for 3600-3700 Hz, 3700-3800 Hz is for 3700-3800 Hz, 3800-3900 Hz is for 3800-3900 Hz, 3900-4000 Hz is for 3900-4000 Hz, 4000-4100 Hz is for 4000-4100 Hz, 4100-4200 Hz is for 4100-4200 Hz, 4200-4300 Hz is for 4200-4300 Hz, 4300-4400 Hz is for 4300-4400 Hz, 4400-4500 Hz is for 4400-4500 Hz, 4500-4600 Hz is for 4500-4600 Hz, 4600-4700 Hz is for 4600-4700 Hz, 4700-4800 Hz is for 4700-4800 Hz, 4800-4900 Hz is for 4800-4900 Hz, 4900-5000 Hz is for 4900-5000 Hz, 5000-5100 Hz is for 5000-5100 Hz, 5100-5200 Hz is for 5100-5200 Hz, 5200-5300 Hz is for 5200-5300 Hz, 5300-5400 Hz is for 5300-5400 Hz, 5400-5500 Hz is for 5400-5500 Hz, 5500-5600 Hz is for 5500-5600 Hz, 5600-5700 Hz is for 5600-5700 Hz, 5700-5800 Hz is for 5700-5800 Hz, 5800-5900 Hz is for 5800-5900 Hz, 5900-6000 Hz is for 5900-6000 Hz, 6000-6100 Hz is for 6000-6100 Hz, 6100-6200 Hz is for 6100-6200 Hz, 6200-6300 Hz is for 6200-6300 Hz, 6300-6400 Hz is for 6300-6400 Hz, 6400-6500 Hz is for 6400-6500 Hz, 6500-6600 Hz is for 6500-6600 Hz, 6600-6700 Hz is for 6600-6700 Hz, 6700-6800 Hz is for 6700-6800 Hz, 6800-6900 Hz is for 6800-6900 Hz, 6900-7000 Hz is for 6900-7000 Hz, 7000-7100 Hz is for 7000-7100 Hz, 7100-7200 Hz is for 7100-7200 Hz, 7200-7300 Hz is for 7200-7300 Hz, 7300-7400 Hz is for 7300-7400 Hz, 7400-7500 Hz is for 7400-7500 Hz, 7500-7600 Hz is for 7500-7600 Hz, 7600-7700 Hz is for 7600-7700 Hz, 7700-7800 Hz is for 7700-7800 Hz, 7800-7900 Hz is for 7800-7900 Hz, 7900-8000 Hz is for 7900-8000 Hz, 8000-8100 Hz is for 8000-8100 Hz, 8100-8200 Hz is for 8100-8200 Hz, 8200-8300 Hz is for 8200-8300 Hz, 8300-8400 Hz is for 8300-8400 Hz, 8400-8500 Hz is for 8400-8500 Hz, 8500-8600 Hz is for 8500-8600 Hz, 8600-8700 Hz is for 8600-8700 Hz, 8700-8800 Hz is for 8700-8800 Hz, 8800-8900 Hz is for 8800-8900 Hz, 8900-9000 Hz is for 8900-9000 Hz, 9000-9100 Hz is for 9000-9100 Hz, 9100-9200 Hz is for 9100-9200 Hz, 9200-9300 Hz is for 9200-9300 Hz, 9300-9400 Hz is for 9300-9400 Hz, 9400-9500 Hz is for 9400-9500 Hz, 9500-9600 Hz is for 9500-9600 Hz, 9600-9700 Hz is for 9600-9700 Hz, 9700-9800 Hz is for 9700-9800 Hz, 9800-9900 Hz is for 9800-9900 Hz, 9900-10000 Hz is for 9900-10000 Hz, 10000-10100 Hz is for 10000-10100 Hz, 10100-10200 Hz is for 10100-10200 Hz, 10200-10300 Hz is for 10200-10300 Hz, 10300-10400 Hz is for 10300-10400 Hz, 10400-10500 Hz is for 10400-10500 Hz, 10500-10600 Hz is for 10500-10600 Hz, 10600-10700 Hz is for 10600-10700 Hz, 10700-10800 Hz is for 10700-10800 Hz, 10800-10900 Hz is for 10800-10900 Hz, 10900-11000 Hz is for 10900-11000 Hz, 11000-11100 Hz is for 11000-11100 Hz, 11100-11200 Hz is for 11100-11200 Hz, 11200-11300 Hz is for 11200-11300 Hz, 11300-11400 Hz is for 11300-11400 Hz, 11400-11500 Hz is for 11400-11500 Hz, 11500-11600 Hz is for 11500-11600 Hz, 11600-11700 Hz is for 11600-11700 Hz, 11700-11800 Hz is for 11700-11800 Hz, 11800-11900 Hz is for 11800-11900 Hz, 11900-12000 Hz is for 11900-12000 Hz, 12000-12100 Hz is for 12000-12100 Hz, 12100-12200 Hz is for 12100-12200 Hz, 12200-12300 Hz is for 12200-12300 Hz, 12300-12400 Hz is for 12300-12400 Hz, 12400-12500 Hz is for 12400-12500 Hz, 12500-12600 Hz is for 12500-12600 Hz, 12600-12700 Hz is for 12600-12700 Hz, 12700-12800 Hz is for 12700-12800 Hz, 12800-12900 Hz is for 12800-12900 Hz, 12900-13000 Hz is for 12900-13000 Hz, 13000-13100 Hz is for 13000-13100 Hz, 13100-13200 Hz is for 13100-13200 Hz, 13200-13300 Hz is for 13200-13300 Hz, 13300-13400 Hz is for 13300-13400 Hz, 13400-13500 Hz is for 13400-13500 Hz, 13500-13600 Hz is for 13500-13600 Hz, 13600-13700 Hz is for 13600-13700 Hz, 13700-13800 Hz is for 13700-13800 Hz, 13800-13900 Hz is for 13800-13900 Hz, 13900-14000 Hz is for 13900-14000 Hz, 14000-14100 Hz is for 14000-14100 Hz, 14100-14200 Hz is for 14100-14200 Hz, 14200-14300 Hz is for 14200-14300 Hz, 14300-14400 Hz is for 14300-14400 Hz, 14400-14500 Hz is for 14400-14500 Hz, 14500-14600 Hz is for 14500-14600 Hz, 14600-14700 Hz is for 14600-14700 Hz, 14700-14800 Hz is for 14700-14800 Hz, 14800-14900 Hz is for 14800-14900 Hz, 14900-15000 Hz is for 14900-15000 Hz, 15000-15100 Hz is for 15000-15100 Hz, 15100-15200 Hz is for 15100-15200 Hz, 15200-15300 Hz is for 15200-15300 Hz, 15300-15400 Hz is for 15300-15400 Hz, 15400-15500 Hz is for 15400-15500 Hz, 15500-15600 Hz is for 15500-15600 Hz, 15600-15700 Hz is for 15600-15700 Hz, 15700-15800 Hz is for 15700-15800 Hz, 15800-15900 Hz is for 15800-15900 Hz, 15900-16000 Hz is for 15900-16000 Hz, 16000-16100 Hz is for 16000-16100 Hz, 16100-16200 Hz is for 16100-16200 Hz, 16200-16300 Hz is for 16200-16300 Hz, 16300-16400 Hz is for 16300-16400 Hz, 16400-16500 Hz is for 16400-16500 Hz, 16500-16600 Hz is for 16500-16600 Hz, 16600-16700 Hz is for 16600-16700 Hz, 16700-16800 Hz is for 16700-16800 Hz, 16800-16900 Hz is for 16800-16900 Hz, 16900-17000 Hz is for 16900-17000 Hz, 17000-17100 Hz is for 17000-17100 Hz, 17100-17200 Hz is for 17100-17200 Hz, 17200-17300 Hz is for 17200-17300 Hz, 17300-17400 Hz is for 17300-17400 Hz, 17400-17500 Hz is for 17400-17500 Hz, 17500-17600 Hz is for 17500-17600 Hz, 17600-17700 Hz is for 17600-17700 Hz, 17700-17800 Hz is for 17700-17800 Hz, 17800-17900 Hz is for 17800-17900 Hz, 17900-18000 Hz is for 17900-18000 Hz, 18000-18100 Hz is for 18000-18100 Hz, 18100-18200 Hz is for 18100-18200 Hz, 18200-18300 Hz is for 18200-18300 Hz, 18300-18400 Hz is for 18300-18400 Hz, 18400-18500 Hz is for 18400-18500 Hz, 18500-18600 Hz is for 18500-18600 Hz, 18600-18700 Hz is for 18600-18700 Hz, 18700-18800 Hz is for 18700-18800 Hz, 18800-18900 Hz is for 18800-18900 Hz, 18900-19000 Hz is for 18900-19000 Hz, 19000-19100 Hz is for 19000-19100 Hz, 19100-19200 Hz is for 19100-19200 Hz, 19200-19300 Hz is for 19200-19300 Hz, 19300-19400 Hz is for 19300-19400 Hz, 19400-19500 Hz is for 19400-19500 Hz, 19500-19600 Hz is for 19500-19600 Hz, 19600-19700 Hz is for 19600-19700 Hz, 19700-19800 Hz is for 19700-19800 Hz, 19800-19900 Hz is for 19800-19900 Hz, 19900-20000 Hz is for 19900-20000 Hz, 20000-20100 Hz is for 20000-20100 Hz, 20100-20200 Hz is for 20100-20200 Hz, 20200-20300 Hz is for 20200-20300 Hz, 20300-20400 Hz is for 20300-20400 Hz, 20400-20500 Hz is for 20400-20500 Hz, 20500-20600 Hz is for 20500-20600 Hz, 20600-20700 Hz is for 20600-20700 Hz, 20700-20800 Hz is for 20700-20800 Hz, 20800-20900 Hz is for 20800-20900 Hz, 20900-21000 Hz is for 20900-21000 Hz, 21000-21100 Hz is for 21000-21100 Hz, 21100-21200 Hz is for 21100-21200 Hz, 21200-21300 Hz is for 21200-21300 Hz, 21300-21400 Hz is for 21300-21400 Hz, 21400-21500 Hz is for 21400-21500 Hz, 21500-21600 Hz is for 21500-21600 Hz, 21600-21700 Hz is for 21600-21700 Hz, 21700-21800 Hz is for 21700-21800 Hz, 21800-21900 Hz is for 21800-21900 Hz, 21900-22000 Hz is for 21900-22000 Hz, 22000-22100 Hz is for 22000-22100 Hz, 22100-22200 Hz is for 22100-22200 Hz, 22200-22300 Hz is for 22200-22300 Hz, 22300-22400 Hz is for 22300-22400 Hz, 22400-22500 Hz is for 22400-22500 Hz, 22500-22600 Hz is for 22500-22600 Hz, 22600-22700 Hz is for 22600-22700 Hz, 22700-22800 Hz is for 22700-22800 Hz, 22800-22900 Hz is for 22800-22900 Hz, 22900-23000 Hz is for 22900-23000 Hz, 23000-23100 Hz is for 23000-23100 Hz, 23100-23200 Hz is for 23100-23200 Hz, 23200-23300 Hz is for 23200-23300 Hz, 23300-23400 Hz is for 23300-23400 Hz, 23400-23500 Hz is for 23400-23500 Hz, 23500-23600 Hz is for 23500-23600 Hz, 23600-23700 Hz is for 23600-23700 Hz, 23700-23800 Hz is for 23700-23800 Hz, 23800-23900 Hz is for 23800-23900 Hz, 23900-24000 Hz is for 23900-24000 Hz, 24000-24100 Hz is for 24000-24100 Hz, 24100-24200 Hz is for 24100-24200 Hz, 24200-24300 Hz is for 24200-24300 Hz, 24300-24400 Hz is for 24300-24400 Hz, 24400-24500 Hz is for 24400-24500 Hz, 24500-24600 Hz is for 24500-24600 Hz, 24600-24700 Hz is for 24600-24700 Hz, 24700-24800 Hz is for 24700-24800 Hz, 24800-24900 Hz is for 24800-24900 Hz, 24900-25000 Hz is for 24900-25000 Hz, 25000-25100 Hz is for 25000-25100 Hz, 25100-25200 Hz is for 25100-25200 Hz, 25200-25300 Hz is for 25200-25300 Hz, 25300-25400 Hz is for 25300-25400 Hz, 25400-25500 Hz is for 25400-25500 Hz, 25500-25600 Hz is for 25500-25600 Hz, 25600-25700 Hz is for 25600-25700 Hz, 25700-25800 Hz is for 25700-25800 Hz, 25800-25900 Hz is for 25800-25900 Hz, 25900-26000 Hz is for 25900-26000 Hz, 26000-26100 Hz is for 26000-26100 Hz, 26100-26200 Hz is for 26100-26200 Hz, 26200-26300 Hz is for 26200-26300 Hz, 26300-26400 Hz is for 26300-26400 Hz, 26400-26500 Hz is for 26400-26500 Hz, 26500-26600 Hz is for 26500-26600 Hz, 26600-26700 Hz is for 26600-26700 Hz, 26700-26800 Hz is for 26700-26800 Hz, 26800-26900 Hz is for 26800-26900 Hz, 26900-27000 Hz is for 26900-27000 Hz, 27000-27100 Hz is for 27000-27100 Hz, 27100-27200 Hz is for 27100-27200 Hz, 27200-27300 Hz is for 27200-27300 Hz, 27300-27400 Hz is for 27300-27400 Hz, 27400-27500 Hz is for 27400-27500 Hz, 27500-27600 Hz is for 27500-27600 Hz, 27600-27700 Hz is for 27600-27700 Hz, 27700-27800 Hz is for 27700-27800 Hz, 27800-27900 Hz is for 27800-27900 Hz, 27900-28000 Hz is for 27900-28000 Hz, 28000-28100 Hz is for 28000-28100 Hz, 28100-28200 Hz is for 28100-28200 Hz, 28200-28300 Hz is for 28200-28300 Hz, 28300-28400 Hz is for 28300-28400 Hz, 28400-28500 Hz is for 28400-28500 Hz, 28500-28600 Hz is for 28500-28600 Hz, 28600-28700 Hz is for 28600-28700 Hz, 28700-28800 Hz is for 28700-28800 Hz, 28800-28900 Hz is for 28800-28900 Hz, 28900-29000 Hz is for 28900-29000 Hz, 29000-29100 Hz is for 29000-29100 Hz, 29100-29200 Hz is for 29100-29200 Hz, 29200-29300 Hz is for 29200-29300 Hz, 29300-29400 Hz is for 29300-29400 Hz, 29400-29500 Hz is for 29400-29500 Hz, 29500-29600 Hz is for 29500-29600 Hz, 29600-29700 Hz is for 29600-29700 Hz, 29700-29800 Hz is for 29700-29800 Hz, 29800-29900 Hz is for 29800-29900 Hz, 29900-30000 Hz is for 29900-30000 Hz, 30000-30100 Hz is for 30000-30100 Hz, 30100-30200 Hz is for 30100-30200 Hz, 30200-30300 Hz is for 30200-30300 Hz, 30300-30400 Hz is for 30300-30400 Hz, 30400-30500 Hz is for 30400-30500 Hz, 30500-30600 Hz is for 30500-30600 Hz, 30600-30700 Hz is for 30600-30700 Hz, 30700-30800 Hz is for 30700-30800 Hz, 30800-30900 Hz is for 30800-30900 Hz, 30900-31000 Hz is for 30900-31000 Hz, 31000-31100 Hz is for 31000-31100 Hz, 31100-31200 Hz is for 31100-31200 Hz, 31200-31300 Hz is for 31200-31300 Hz, 31300-31400 Hz is for 31300-31400 Hz, 31400-31500 Hz is for 31400-31500 Hz, 31500-31600 Hz is for 31500-31600 Hz, 31600-31700 Hz is for 31600-31700 Hz, 31700-31800 Hz is for 31700-31800 Hz, 31800-31900 Hz is for 31800-31900 Hz, 31900-32000 Hz is for 31900-32000 Hz, 32000-32100 Hz is for 32000-32100 Hz, 32100-32200 Hz is for 32100-32200 Hz, 32200-32300 Hz is for 32200-32300 Hz, 32300-32400 Hz is for 32300-32400 Hz, 32400-32500 Hz is for 32400-32500 Hz, 32500-32600 Hz is for 32500-32600 Hz, 32600-32700 Hz is for 32600-32700 Hz, 32700-32800 Hz is for 32700-32800 Hz, 32800-32900 Hz is for 32800-32900 Hz, 32900-33000 Hz is for 32900-33000 Hz, 33000-33100 Hz is for 33000-33100 Hz, 33100-33200 Hz is for 33100-33200 Hz, 33200-33300 Hz is for 33200-33300 Hz, 33300-33400 Hz is for 33300-33400 Hz, 33400-33500 Hz is for 33400-33500 Hz, 33500-33600 Hz is for 33500-33600 Hz, 33600-33700 Hz is for 33600-33700 Hz, 33700-33800 Hz is for 33700-33800 Hz, 33800-33900 Hz is for 33800-33900 Hz, 33900-34000 Hz is for 33900-34000 Hz, 34000-34100 Hz is for 34000-341

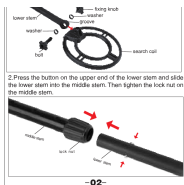
-16-



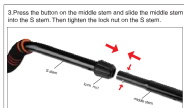
no special tools. Just follow these steps:

1. Put the washers into the groove of the lower stem. Then use the supplied bolt and knob, attach the search coil to the lower stem.

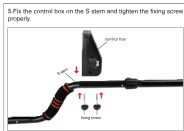




-02-



-03-



6 Wind the search coil cable around the stem. Insert the cable plug into the jack at the back of the control box.
Caution:
• Do not over-tighten the search coil or use tools to tighten it.
• Do not force the plug in. Excess force will cause damage.
• To disconnect the cable, pull out the plug. Do not pull on the cable.

-04-

INSTALLING THE BATTERIES

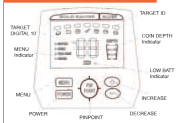
IMPORTANT:
• Always use ALKALINE batteries for optimal performance.
• Always remove the batteries for prolonged storage.
• DO NOT mix old and new batteries.
• DO NOT MIX OLD AND NEW BATTERIES.
• CHECK THE BATTERIES if your detector exhibits any of the following symptoms:
1. The unit does not turn on.
2. Low speaker volume.
3. Unit beeps continuously at low sensitivity setting.
Follow these steps to install the batteries:
1. Turn off the detector.
2. Take off the battery cover.
3. Place four AA alkaline batteries into the battery compartment matching the polarity symbols (+ and -) marked inside.
Warning:
• Dispose of old batteries properly. Never bury or burn them.

USING HEADPHONES

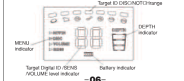
1. It is recommended to choose the headphones with volume control.
2. Insert the headphones 3.5mm plug into the headphone jack on the bottom of the control box. At this time the internal speaker disconnects.

-05-

LAYOUT OF THE CONTROL PANEL



LCD DISPLAY



-06-

1. Target ID Indications

Target	DISC	DISC RANGE	DISC RANGE
Target	Full	Full	Full
Time	Low	Medium	High
Depth	Low	Medium	High
Target	Full	Full	Full

3.SENSITIVITY (Sensitivity): Adjust the sensitivity from 1 to 10. The higher the number, the more sensitive the detector. This sensitivity control does not affect pinpoint sensitivity.
If the detector beeps erratically or beeps when there are no metal objects being detected, reduce the sensitivity.
Note: Cell phones, cell phone towers, etc., all produce interference signals and will cause the detector to beep when no metal is present, and sometimes to beep erratically.

3.VOLUME Adjust the volume level from 0 to 10.
4.DISC Discrimination is an important feature of professional metal detectors. It allows you to reject unwanted objects.
The DISC control is Discrimination function of the detector. In its default setting, all metals are detected. Use the DISC function in order to eliminate unwanted types of metals from detection. You only need to eliminate the targets in order. Each time you press "V" button, it

-07-

target will disappear. The target disappears means that category is eliminated from detection. To pick up the eliminated target category, press "V" and category will be accepted back in order.
Note: The two targets on the right cannot be eliminated. These two targets represent steel or other high value targets, which are generally desirable. So the detector does not allow them to be discriminated out.
5.NOTICE: It is similar to Discrimination (DISC). It allows you out of turn to accept or reject different types of metals. The DISC can only accept or reject metals in order.
The NOTICE Mode is only applicable in FULL, Sc, ALUM, and 1c.
Press four categories.
Press "V" and "1c" to select a new category. The target ID will flash for 3 seconds and then it will change to the opposite side. Or press MENU while the target ID is flashing and then it will change to the opposite side. If the target has been illuminated previously and disappears now indicates that the target has been eliminated from detection. As same, the target disappeared before and illuminates now indicates that target is matched in or can be detected.

-08-

CONTROL BUTTONS



• **POWER:** Press the button to turn on the detector. Press it again to turn off the detector.
• **MENU:** Press MENU to make a active and select operation mode (NOTICE, DISC, Sc, BEEP, or VOLUME).
• **INCREASE (+):** Increase the level of sensitivity or volume and the display of DISC (discrimination) or NOTICE.
• **DECREASE (-):** Decrease the level of sensitivity or volume and the display of DISC (discrimination) or NOTICE.
• **PINPOINT:** Press and hold for precision target pinpoint at any time.

TESTING THE DETECTOR

1. Supplies Needed:
• A bottle cap (made of iron) • A quarter (DISC)
• A nickel (Sc) • A Penny (1c)
• A Gold Ring • A dime (10c)

-09-

2. Position the Detector:
1. Place the detector on a table with the search coil hanging over the edge.
2. Be sure that the search coil is far away from walls or metal objects. Keep the search coil away from any metal in the table.
3. Turn off equipment that may interfere with electromagnetic radiation.
4. Point the search coil back.
5. Press POWER to turn on.

3. Using ALL METAL Feature:
Move all objects over the search coil and notice the different tones.
4. Using DISC (Discrimination) Feature:
1. Press MENU until DISC is displayed on LCD.
2. Press "V" once. The bottle cap (iron) indicator will disappear.

③ When the bottle cap, it will not be detected because it has been "discriminated out".

③ Press MENU until NOTCH is displayed on LCD.

③ Press "+" twice. So will flash for 3 seconds and disappear. That means So is "notch out" (eliminated). To eliminate 1g, press "+" until 1g flash and disappear.

-10-

③ When 5g or 1g over the search coil. 5g and 1g will not be detected because they have been "notch out"(eliminated). Notice, the target categories disappear on LCD can not be detected.

If you want to pick up the target type into eliminated feature, press "-" or "+" to the target, and then wait for the target to flash for 3 seconds. Or press MENU button when it is flashing.

6.Using PINPOINT Feature:

① Press and hold "PINPOINT" button, PP will appear on LCD display.

① Hold a coin motionless near the search coil.

① Sweeping coin over search coil.

① Notice that the sound changes as the coin moves closer or further.

① Notice that the depth indicator changes as the coin moves up and down.

7.Adjusting SENS(sensitivity)

① Press MENU until SENS is displayed on LCD.

① Press "+" or "-" to set the SENS. Sensitivity level can be set from 1 to 10.

8.Adjusting VOLUME

① Press MENU until VOLUME is displayed on LCD.

① Press "+" or "-" to set Volume. Volume level can be set from 0 to 10.

OVERLOAD WARNING

If a metal object or highly magnetic coil are too close to the

-11-

search coil, the detector will overload and "--" will appear on LCD display. The detector will make a rapid repeating short tone warning sound. Overload will not harm the detector, but the detector will not function in these conditions. If overload occurs, keep the search coil away from the target.

Note: There is a wide variety of metals and no target can be identified for certain until overloaded. This table is for general reference only.


OUTDOOR DETECTING

① Find a place outside where there is no metal.

② Place a sample you want to find on the ground.

③ Press POWER to turn on the detector.

④ Swing the search coil gently from side to side, slightly overlapping each sweep as you move forward. Keep your search coil approximately 1-2 inches above the ground as you search.



Notes:

• Raising it during the sweep, or at the ends of your sweep, can cause false readings.

• Move slowly. Hurrying will cause you to miss targets.

-12-

• Most desirable objects will respond with a repeatable tone. When discriminating iron and ferrous objects generally do not respond.

• False signals can be caused by trashy ground, electrical interference, or by large irregular trash objects. These signals are easily recognized by their often broken or non-repeatable pattern.

DETECTING WITH PINPOINT

After you find a target, you can use PP(Pinpoint) to find the exact location of the target as follows:

① Press and hold PP to activate the Pinpoint feature.

② Move the search coil slowly across the target, and you can locate it by the sound.

Narrow the Detection Range:

① To narrow the response further, position the search coil near the target.

② Press PP button and hold, move the search coil slowly.

③ When you hear the sound, you can release the PP.

④ And then press PP to continue the detection. In this way you can narrow the range of the target.

⑤ Repeat the above steps.

When the coil moves to the center of the target, the signal from the detector is the strongest.

-13-

Problem

Reason

Suggestion

The detector displays an accuracy indicator of 1g (the accuracy of the detector is 1g).

① The detector may require calibration. Turn back on the alarm and 1g will disappear. ② The battery and magnet may be extremely high.

① Change sweeping phase. ② Turn off the alarm and 1g will disappear.

The detector sounds when it is not in the ground.

① Sensitivity set too high. ② The detector is not properly calibrated. ③ The detector is not properly calibrated. ④ The detector is not properly calibrated. ⑤ The detector is not properly calibrated.

① Reduce sensitivity. ② Turn off the alarm and 1g will disappear. ③ Turn off the alarm and 1g will disappear. ④ Turn off the alarm and 1g will disappear. ⑤ Turn off the alarm and 1g will disappear.

The detector does not detect anything.

① Sensitivity set too low. ② Target is not in the ground. ③ Search coil is not parallel to the ground.

① Increase sensitivity. ② Turn off the alarm and 1g will disappear. ③ Turn off the alarm and 1g will disappear.

LCD display malfunctions.

① There may be too much iron in the ground. ② The battery is not properly calibrated. ③ The detector is not properly calibrated.

① Reduce the sensitivity. ② Turn off the alarm and 1g will disappear. ③ Turn off the alarm and 1g will disappear.

No power, no sound.

① The battery is not properly calibrated. ② The battery is not properly calibrated.

① Turn off the alarm and 1g will disappear. ② Turn off the alarm and 1g will disappear.

-14-

NOTE: IF YOU EXPERIENCE A PROBLEM, PLEASE CONTACT OUR CUSTOMER SERVICE FIRST. YOU CAN REACH US AT support@wonder310.com OR wonder310.com. OUR PROFESSIONAL REPRESENTATIVES AND ENGINEERS ARE HERE READY TO HELP.

Care and Maintenance

Our metal detector is an example of superior design and craftsmanship. The following suggestions will help you care for your metal detector so you can enjoy it for years.

① Handle the detector gently and carefully. Dropping it can damage internal boards and cause it not to work properly.

② Use the detector only in normal temperature environments. Temperature extremes can shorten the life of electronic devices, damage the coils of the detector.

③ Keep the detector away from dust and dirt, which can cause premature wear.

④ Wipe the detector with a damp cloth occasionally to keep it looking nice. Do not use harsh chemicals, cleaning solvents, or strong detergents to clean the detector.

-15-

[FlexiSpot GD01 Gaming Desk: Installation Guide & Limited Warranty](#)

Detailed installation instructions and warranty information for the FlexiSpot GD01 Gaming Desk, covering assembly steps, specifications, and coverage details.

[Gd01 True Wireless Earbuds User Manual - WANFEI](#)

Comprehensive user manual for WANFEI Gd01 True Wireless Earbuds, covering setup, controls, charging, ANC technology, and FCC compliance. Learn how to pair, use, and maintain your Gd01 earbuds.