

HAKINAKU HD11

HAKINAKU 4-in-1 Smoke & Carbon Monoxide Detector User Manual

Model: HD11 | Brand: HAKINAKU

1. INTRODUCTION

This manual provides essential information for the proper installation, operation, and maintenance of your HAKINAKU 4-in-1 Smoke & Carbon Monoxide Detector. This device integrates smoke, carbon monoxide (CO), temperature, and humidity sensors to monitor your environment. Please read this manual thoroughly before use and retain it for future reference.



Image 1.1: Front view of two HAKINAKU 4-in-1 Smoke & Carbon Monoxide Detectors.

2. SAFETY INFORMATION

Adherence to the following safety guidelines is crucial for effective operation and to prevent damage or injury:

- **Installation:** Install the detector according to the guidelines provided in this manual. Improper placement can reduce its effectiveness.
- **Testing:** Test the detector regularly as instructed to ensure it is functioning correctly.
- **Maintenance:** Keep the detector clean and free from dust. Do not paint the unit.
- **Alarms:** Do not ignore alarms. Investigate the cause of any alarm immediately.
- **Power:** The device operates on AC power with a built-in backup battery. Ensure it is plugged into a functional outlet.
- **Disassembly:** Do not attempt to open or repair the detector. Refer all servicing to qualified personnel.

3. PRODUCT OVERVIEW

3.1 Key Features

- **4-in-1 Detection:** Integrates sensors for Carbon Monoxide (CO), Smoke, Temperature, and Humidity.
- **Plug-in Design:** Compatible with US 110V to 220V AC outlets for continuous power.
- **2000 mAh Backup Battery:** Provides up to 120 hours of operation during power outages or for portable

use.

- **2.1" HD Screen:** Displays real-time CO concentration (ppm), smoke status, humidity percentage, and temperature.
- **Audible Alarm:** Emits an 85 dB alarm to alert occupants to hazardous conditions.
- **High Precision Sensors:** Equipped with electrochemical and photoelectric sensors for sensitive and stable detection.



Image 3.1: Overview of the detector's 4-in-1 capabilities.

High precision electrochemical photoelectric sensors

Sensitive and stable
detection performance



Image 3.2: Internal components and high precision sensors.

3.3 Components and Controls

The detector features a clear HD screen and intuitive buttons for control and information display.



Image 3.3: Detector screen elements and button functions.

- **HD Screen:** Displays CO concentration, smoke status, humidity, temperature, battery level, and alarm status.
- **Power Button:** Used for self-testing (short press) and powering off when on battery (long press).
- **Screen Brightness Button:** Adjusts screen brightness (short press) and switches temperature units (°C/°F) (long press).
- **Buzzer Button:** Silences the alarm (short press).
- **Indicator Light:** Provides visual status feedback.

4. SETUP AND INSTALLATION

4.1 Powering the Detector

1. **Plug-in Mode:** Insert the detector directly into a standard US 110V-220V AC wall outlet. The device will power on automatically and begin charging its internal backup battery.
2. **Backup Battery:** The built-in 2000 mAh lithium-ion battery provides power during outages, ensuring continuous protection. It charges automatically when plugged into AC power.



Image 4.1: Detector highlighting its built-in backup battery.

4.2 Placement Guidelines

Proper placement is critical for optimal performance. Consider the following:

- **Smoke Detection:** For smoke, place detectors on every level of your home, inside bedrooms, and outside sleeping areas. Avoid placing near kitchens, bathrooms, or garages where cooking fumes or steam can cause false alarms.
- **Carbon Monoxide Detection:** For CO, place detectors on every level of your home, especially near sleeping areas and sources of CO (e.g., attached garages, furnaces, water heaters).
- **General Placement:**
 - Mount on a wall or ceiling. If on a wall, place 4-12 inches (10-30 cm) from the ceiling.
 - Avoid dead air spaces, such as at the peak of a vaulted ceiling or in corners.
 - Keep away from direct sunlight, vents, fans, and areas with extreme temperatures or humidity.
 - Ensure the alarm is audible from all sleeping areas.

Home Harmful gas Detecting Placement Guide

Smoke, gas leaks, carbon monoxide poisoning is so huge hurt to human, it is necessary to pay more attention to gas safety monitoring. bedrooms, dining rooms, kitchens, living rooms, kitchens, basements, garages, etc, needs to install safety detectors, Recommend installation show as diagram.

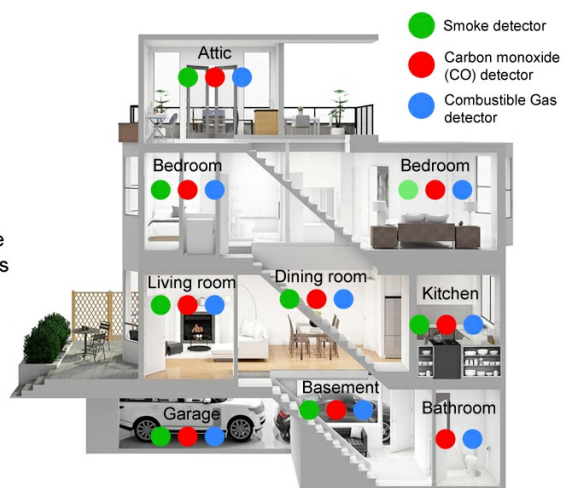


Image 4.2: Home harmful gas detecting placement guide.

4.3 Portable Mode

The detector can be used in portable mode for travel or outdoor activities. To switch to portable mode:

1. Carefully remove the plug part from the back of the detector.
2. Install the magnetic part (if included) or attach a lanyard for easy carrying.
3. The detector will operate on its internal backup battery.



Image 4.3: Switching between plug mode and portable mode.

5. OPERATION

5.1 Screen Display

The 2.1" HD screen provides real-time environmental data:

- **CO PPM:** Displays the current Carbon Monoxide concentration in parts per million.
- **Smoke Indicator:** A visual bar or icon indicates the presence and level of smoke.
- **Humidity:** Shows the relative humidity percentage.
- **Temperature:** Displays the ambient temperature in Celsius or Fahrenheit.
- **Battery Level:** Indicates the remaining battery charge.

- **Alarm Status:** Icons or text may indicate an active alarm or fault.



Image 5.1: Detailed view of the HD screen display.

5.2 Button Functions

- **Power Button:**
 - **Short Press:** Initiates a self-test of the alarm and sensors.
 - **Long Press:** Turns the device off when operating on battery power. (Note: Device remains on when plugged into AC).
- **Screen Brightness Button:**
 - **Short Press:** Cycles through screen brightness levels.
 - **Long Press:** Switches the temperature display between Celsius (°C) and Fahrenheit (°F).
- **Buzzer Button:**
 - **Short Press:** Silences the audible alarm for a temporary period (e.g., during a false alarm). The visual alarm will typically remain active until the condition clears.

6. ALARMS AND INDICATORS

The detector provides both audible and visual alerts for hazardous conditions.

6.1 Smoke Alarm

- **Audible:** A loud, continuous siren (85 dB).
- **Visual:** The screen will display a prominent smoke icon, often with a red background or flashing.
- **Action:** If the smoke alarm sounds, evacuate all occupants immediately. Do not re-enter until the source of smoke has been identified and cleared, and the area is ventilated.

6.2 Carbon Monoxide (CO) Alarm

- **Audible:** A distinct pattern of beeps (e.g., 4 short beeps, pause, repeat).
- **Visual:** The screen will display the CO concentration in PPM, often with a red background or flashing, and a CO icon.
- **Action:** If the CO alarm sounds, move to fresh air immediately. Call emergency services or your local fire department. Do not re-enter the premises until it has been deemed safe by emergency personnel.



6.3 Low Battery Indicator

When the backup battery is low, the detector will typically display a low battery icon on the screen and may emit a periodic chirp. Plug the unit into an AC outlet to recharge the battery.

6.4 Sensor Fault Indicator

If a sensor fault is detected, the screen may display an error code or a specific fault icon. Refer to the troubleshooting section or contact customer support if this occurs.

7. MAINTENANCE

7.1 Regular Testing

Test your detector weekly by pressing the Power Button (short press). The alarm should sound, and the screen should indicate a test in progress. If the alarm does not sound, refer to the troubleshooting section.

7.2 Cleaning

Clean the detector at least once a month to remove dust and debris that could interfere with sensor operation:

- Use a soft, damp cloth to wipe the exterior of the unit.
- Do not use cleaning solvents or harsh chemicals.
- Do not spray cleaning agents directly onto the detector.
- Gently vacuum around the vents and openings to remove dust.

Design of metal mesh air duct

Accurate detection of gas smoke



Image 7.1: Rear view of the detector, highlighting the metal mesh air duct for sensor access.

7.3 Battery Care

The built-in 2000 mAh lithium-ion battery is designed for long-term use. Keep the unit plugged into an AC outlet whenever possible to ensure the battery remains charged and ready for power outages or portable use. The battery is not user-replaceable.

8. TROUBLESHOOTING

If your detector is not functioning as expected, refer to the following common issues and solutions:

Problem	Possible Cause	Solution
Alarm sounds intermittently or falsely.	Dust or debris in sensor, proximity to cooking fumes/steam, high humidity.	Clean the detector. Relocate away from sources of steam or fumes. Ensure proper ventilation.
Detector chirps periodically.	Low backup battery.	Plug the detector into an AC outlet to recharge the battery.

Problem	Possible Cause	Solution
No display or unit not powering on.	No AC power, completely drained battery, unit malfunction.	Ensure the unit is securely plugged into a live AC outlet. Allow time for battery to charge. If issue persists, contact support.
Self-test fails (no alarm sound).	Unit malfunction.	Ensure the unit is receiving power. If the issue persists after cleaning and power cycle, contact support.

If you encounter issues not listed here or if the problem persists after attempting the solutions, please contact HAKINAKU customer support.

9. SPECIFICATIONS

Feature	Detail
Model Number	HD11
Brand	HAKINAKU
Product Dimensions	4.6"D x 1.1"W x 2.7"H (11.7 cm D x 2.8 cm W x 6.9 cm H)
Item Weight	9.6 ounces (272 grams)
Power Source	AC (110V-220V) + Built-in 2000 mAh Lithium Ion Battery
Battery Life (Backup)	Up to 120 hours
Alarm Loudness	85 dB
Sensors	Carbon Monoxide, Smoke, Temperature, Humidity
Display	2.1" HD Screen
Material	ABS
Color	White
UPC	758321301916
Part Number	CWQ-US-HD11-2PCS-WH
Usage Environment	Indoor (also portable for travel/outdoor)

10. WARRANTY AND SUPPORT

10.1 Warranty Information

This HAKINAKU detector comes with a **5-Year Free Exchange Warranty** for any quality issues. Please retain your proof of purchase for warranty claims.

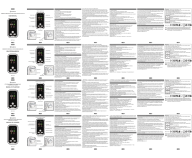

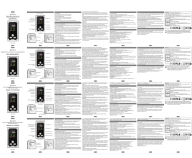
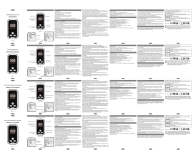
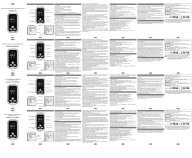

10.2 Customer Support

For technical assistance, troubleshooting, or warranty inquiries, please contact HAKINAKU customer support.

Refer to the product packaging or the official HAKINAKU website for current contact details.
You can also visit the [HAKINAKU Store on Amazon](#) for more product information and support resources.

© 2024 HAKINAKU. All rights reserved.

Related Documents - HD11

	<p>Gedsffati HD11-CG Combined Gas and Carbon Monoxide Detector User Manual</p> <p>User manual for the Gedsffati HD11-CG, a combined combustible gas and carbon monoxide detector. Provides instructions on operation, alarm functions, technical specifications, and safety precautions.</p>
	<p>HD11 Combined Smoke and Carbon Monoxide Detector User Manual</p> <p>User manual for the HD11 Combined Smoke and Carbon Monoxide Detector, detailing its features, operation, safety guidelines, technical specifications, and warranty information.</p>
	<p>Gedsffati HD11-CGS Combined Smoke, Combustible Gas, and Carbon Monoxide Detector User Manual</p> <p>User manual for the Gedsffati HD11-CGS, a combined smoke, combustible gas, and carbon monoxide detector. Learn about its features, functions, operation, and technical specifications.</p>
	<p>HD11-C Carbon Monoxide Detector User Manual</p> <p>User manual for the HD11-C Carbon Monoxide Detector by Shenzhen Huidu Technology Co., Ltd., detailing its features, functions, usage instructions, technical specifications, and safety precautions.</p>
	<p>HD11-CG Combined Gas and Carbon Monoxide Detector User Manual</p> <p>User manual for the HD11-CG, a combined combustible gas and carbon monoxide detector. Provides information on operation, safety precautions, alarm functions, and technical specifications.</p>
	<p>User Manual for Carbon Monoxide Detector Model D6</p> <p>This user manual provides instructions and specifications for the Model D6 Carbon Monoxide Detector. Learn how to operate the device, understand CO concentration indicators, and view product specifications and safety precautions.</p>