

Manuals+

[Q & A](#) | [Deep Search](#) | [Upload](#)

manuals.plus /

- › [Junsun](#) /
- › [Junsun Android Car Stereo for Honda Accord \(2003-2007\) - User Manual](#)

Junsun JS-US-XT812CAccord-HS19

Junsun Android Car Stereo for Honda Accord (2003-2007)

Model: JS-US-XT812CAccord-HS19 | Brand: Junsun

1. INTRODUCTION AND COMPATIBILITY

This manual provides detailed instructions for the installation, operation, and maintenance of your Junsun Android Car Stereo. This unit is specifically designed for Honda Accord models manufactured between 2003 and 2007. It is important to note that this unit does **not** support diesel models.

24 hours technical support

STEP 1

In Stock

Quantity: 1

Add to Cart

Buy Now

Ships from

Sold by

Returns

Payment

Amazon

Junsun Car Electronics

Eligible for Amazon, Refund or Replacement...

Secure transaction

STEP 2

Junsun Car Electronics

Visit the Junsun Car Electronics storefront

★★★★★ 98% positive in the last 12 months (48 ratings)

About Seller

Junsun is committing itself to build a worldwide wholesale shop online. Our company aiming to operate the business-to-customer transactions with overseas consumers. Along with the rapid development of electronic business in China, junsun has earned itself a solid reputation for quality, reliability and professionalism in this field.

Have a question for Junsun Car Electronics?

Ask a question

Image 1.1: Visual comparison of the dashboard before and after installing the Junsun Android Car Stereo in a Honda Accord (2003-2007). This unit is not compatible with diesel models.

2. WHAT'S IN THE BOX

Please verify that all the following components are included in your package:

- Head Unit (Android Car Stereo)
- Wire Cables (Power Harness, RCA Cable, USB Cable)
- Crowbar (for trim removal)
- Frame (Dash Kit)
- Backup Camera (HS19 model)

- AC Plug
- Microphone
- GPS Module
- Reversing Line
- Screwdriver



Image 2.1: An overview of all components included in the Junsun Android Car Stereo package, including the head unit, dash kit, wiring, and backup camera.

3. KEY FEATURES

The Junsun Android Car Stereo offers a range of advanced features for an enhanced driving experience:

- **Android 13 Operating System:** Provides fast performance and seamless navigation with a powerful processor and low energy consumption.
- **HD Touchscreen:** 9-inch IPS HD display (1280x720 resolution) for vibrant visuals and effortless interaction.
- **Wireless & Wired Connectivity:** Integrated Wireless CarPlay, Android Auto, and Screen Mirroring for easy smartphone connection via Bluetooth or USB.
- **GPS Navigation:** Powerful GPS module with online navigation support for precise positioning and live traffic updates.
- **Bluetooth 5.0:** Supports hands-free calling, contact synchronization, and audio streaming with an external microphone for clear calls.
- **FM/AM Radio with RDS:** Keeps you connected to news and traffic updates.
- **Digital Signal Processing (DSP):** Advanced audio processing for superior sound quality.
- **1080P AHD Backup Camera:** Includes an HS19 rearview camera for crystal-clear visuals and safer reversing.
- **Steering Wheel Control Integration:** Allows control of audio functions directly from your steering wheel.
- **Software Update Support:** Wireless updates to address bugs and enhance security (software usability, not Android version upgrades).

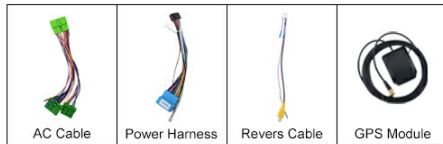
4. INSTALLATION GUIDE

Proper installation is crucial for optimal performance. It is recommended to consult a professional if you are unsure about any steps.

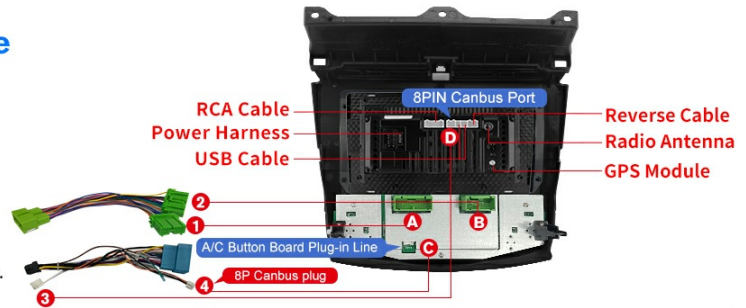
4.1. Wiring Diagrams

Refer to the appropriate wiring diagram based on your vehicle's climate control system (single or dual).

Wiring Diagram for Single Climate



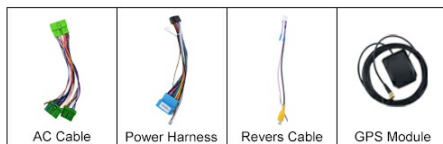
Note: Please use the Green AC plug as the photo show.



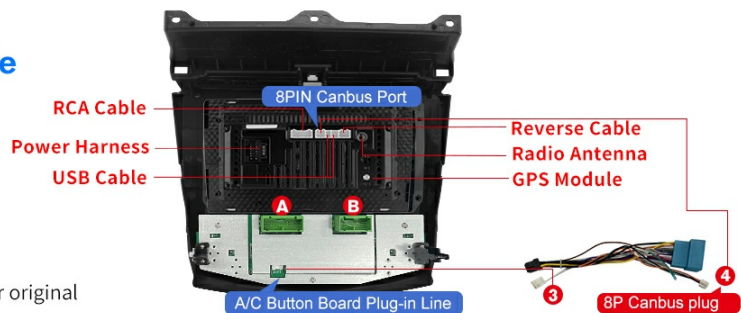
- | | | |
|-----------------------------|-----------------------------|------------------------|
| ① AMP Control Cable | ④ RCA FL,Audio Output Left | ⑦ AUX VIN,Video Input |
| ② AUX LIN,Audio Input Left | ⑤ RCA FR,Audio Output Right | ⑧ AUX VIN2,Video Input |
| ③ AUX RIN,Audio Input Right | ⑥ V Out,Video Output | ⑨ Sub,Subwoofer Output |
| | | ⑩ Mic,Microphone Port |

Image 4.1: Wiring diagram for vehicles equipped with a single climate control system. Ensure the green AC plug is used as shown.

Wiring Diagram for Dual Climate



Note:
Please donot use the green AC plug,please use your car original AC plugs to the 2 Ports.(A&B)



- | | | |
|-----------------------------|-----------------------------|------------------------|
| ① AMP Control Cable | ④ RCA FL,Audio Output Left | ⑦ AUX VIN,Video Input |
| ② AUX LIN,Audio Input Left | ⑤ RCA FR,Audio Output Right | ⑧ AUX VIN2,Video Input |
| ③ AUX RIN,Audio Input Right | ⑥ V Out,Video Output | ⑨ Sub,Subwoofer Output |
| | | ⑩ Mic,Microphone Port |

Image 4.2: Wiring diagram for vehicles equipped with a dual climate control system. Do not use the green AC plug; use your car's original AC plugs into ports A and B.

4.2. Aftermarket Rear Camera Connection

The included HS19 backup camera requires proper wiring for functionality.

- Connect the red cable to the backup light's positive (+) terminal.
- Connect the black cable to the ground (GND).



Image 4.3: Illustration showing the correct connections for the aftermarket rear camera to the head unit and vehicle's power system.

5. SETUP AND CONFIGURATION

5.1. Steering Wheel Control (SWC) Programming

Steering wheel controls need to be programmed manually as the unit does not include CANBUS for this function. Follow these steps:

1. Go to *Settings > Car Settings > General > SWC Type*.
2. Switch to *Learning Type*. A new option will appear below the original option.
3. Enter the SWC setting interface and follow the prompts to program each steering wheel function.

Image 5.1: Screenshot of the steering wheel control programming interface, showing various functions that can be mapped.

5.2. CANBUS Option

To configure CANBUS settings, navigate to:

- *Car Settings > Factory*
- Enter code *000000*
- Select *Changyuantong > Honda > Honda_C01*

Image 5.2: Display of the CANBUS settings menu, illustrating the selection path for Honda Accord models.

5.3. DIY Boot Logo

You can customize the boot logo of your unit:

1. Prepare a USB drive with your desired logo image. The image must be a **.png** file with the same resolution as the current machine's display screen.
2. Rename the logo image file to **zxdzlogo.png**.
3. Copy the **zxdzlogo.png** file to the root directory of the USB drive.
4. Connect the USB drive to the unit via a USB cable.
5. On the unit, go to *Settings > System > About Car Vehicle > Local Upgrade > Start Upgrade*.

Image 5.3: The boot logo display, illustrating a customized Android 13 logo.

6. OPERATING INSTRUCTIONS

6.1. Wireless CarPlay / Android Auto

Connect your iPhone or Android device wirelessly via Bluetooth for seamless integration of CarPlay or Android Auto features. Wired connection is also supported for Android Auto.

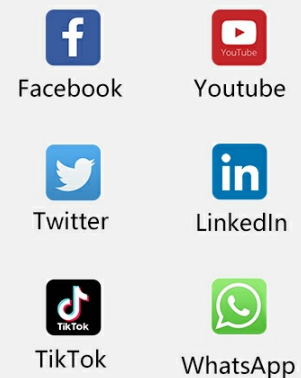
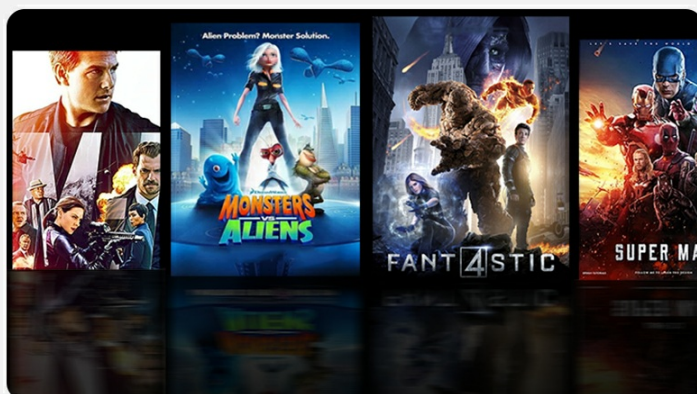


Image 6.1: The car stereo display showing the Wireless CarPlay and Android Auto interfaces, along with a smartphone for connection reference.

6.2. GPS Navigation

Utilize the built-in GPS module for precise navigation. The system supports both online and offline maps, providing real-time traffic information when connected to the internet.

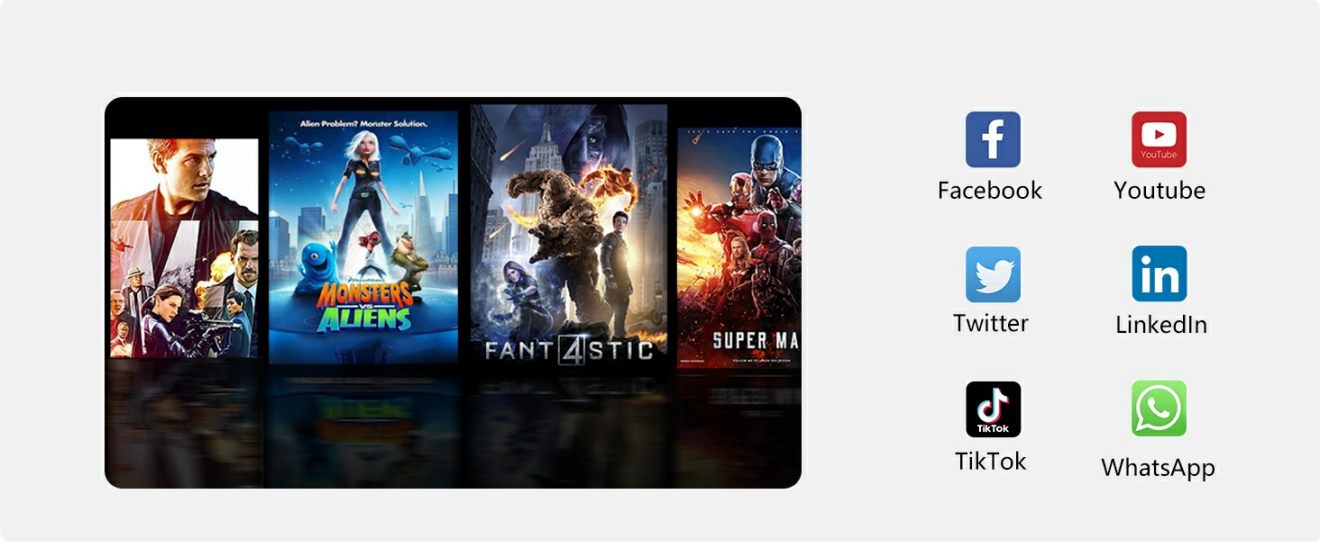


Image 6.2: The car stereo display showing the GPS navigation interface with a route and estimated travel time.

6.3. Bluetooth Functions

The upgraded Bluetooth 5.0 system enables hands-free calling, contact synchronization, and audio streaming from your mobile device. An external microphone ensures optimal call clarity.

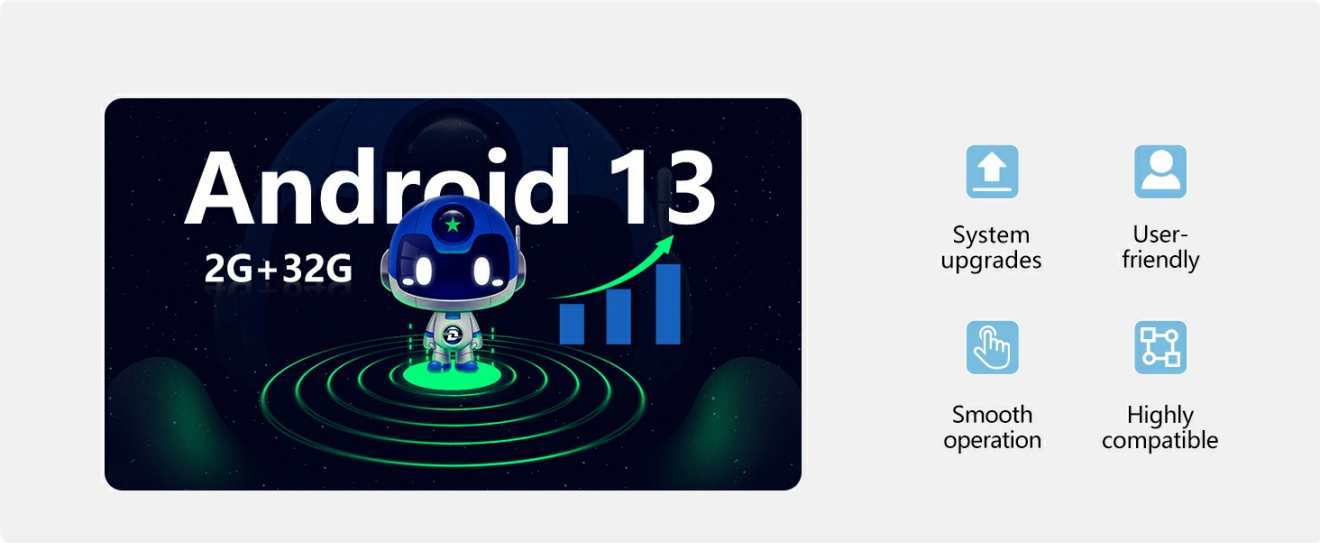


Image 6.3: The car stereo displaying the Bluetooth call interface and options for browsing online videos.

6.4. FM/AM Radio

Access your favorite radio stations with the integrated FM/AM tuner. RDS (Radio Data System) provides additional information such as station name and song title where available.

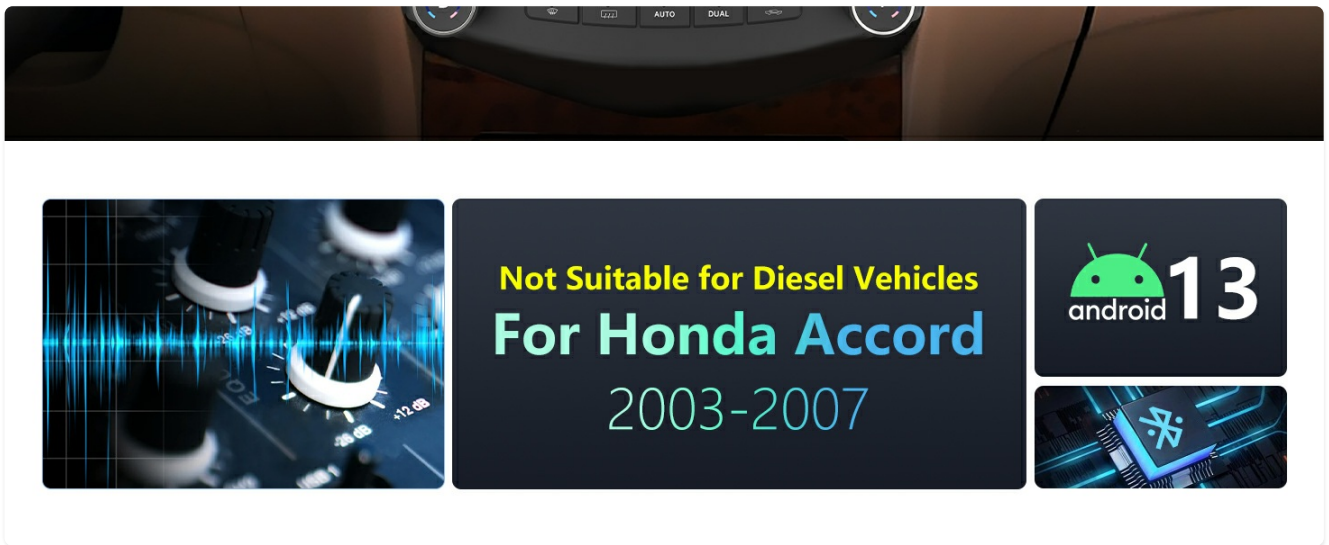


Image 6.4: The car stereo displaying the FM radio interface with station frequency and signal strength indicators.

6.5. Digital Signal Processing (DSP)

Fine-tune your audio experience using the Digital Signal Processing (DSP) features. Adjust equalizer settings, balance, and fader to optimize sound output.

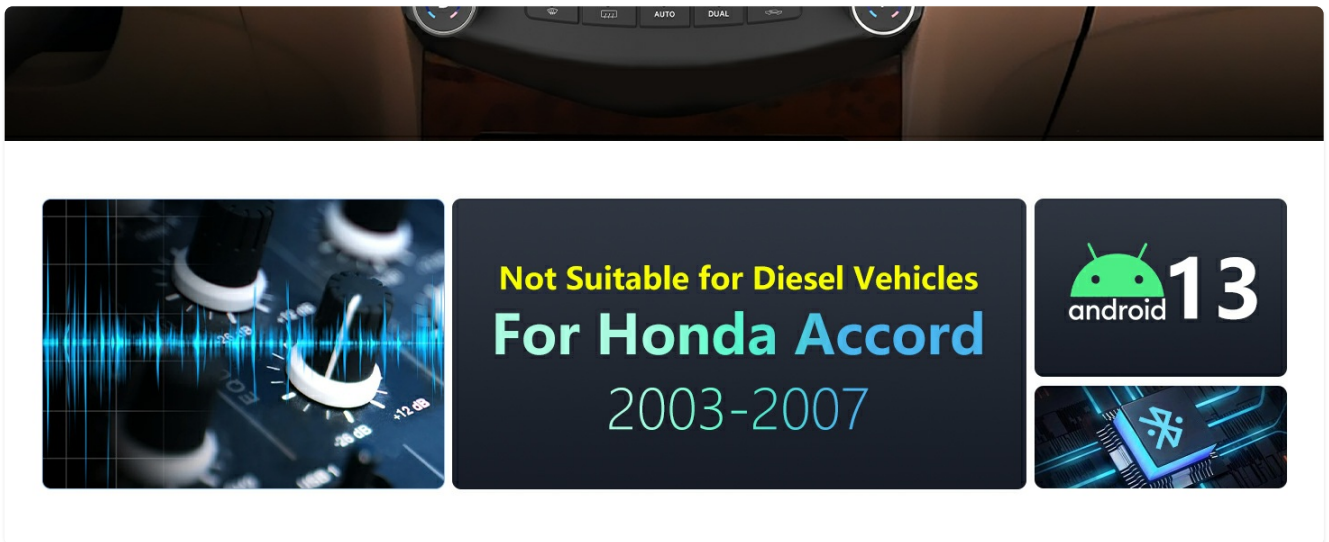


Image 6.5: The car stereo displaying the DSP interface, showing various equalizer bands and sound adjustment options.

6.6. Split Screen and Multiple UI Interfaces

The unit supports split-screen functionality, allowing you to run two applications simultaneously. Choose from multiple user interface (UI) designs to personalize your experience.



Image 6.6: The car stereo demonstrating split-screen functionality with navigation and a dial pad, alongside examples of different user interface themes.

7. MAINTENANCE

To ensure the longevity and optimal performance of your Junsun Android Car Stereo, follow these maintenance guidelines:

- **Screen Cleaning:** Use a soft, lint-free cloth to gently wipe the touchscreen. Avoid abrasive cleaners or harsh chemicals that could damage the display.
- **Software Updates:** Regularly check for and install wireless software updates to ensure the system runs efficiently and securely. These updates enhance software usability.
- **Environmental Conditions:** Avoid exposing the unit to extreme temperatures, direct sunlight for prolonged periods, or excessive moisture.
- **Cable Connections:** Periodically check all cable connections to ensure they are secure and free from damage. Loose connections can lead to intermittent issues.

8. TROUBLESHOOTING

If you encounter issues with your Junsun Android Car Stereo, consider the following common troubleshooting steps:

- **Unit Not Powering On:** Check all power connections and ensure the vehicle's ignition is on. Verify fuses are intact.
- **Slow Boot-Up or Glitches:** If the unit boots slowly or experiences occasional glitches, try rebooting the system from the settings menu. Ensure all apps are closed when not in use.
- **AC Controls Unresponsive/Slow:** While the AC controls should work instantly, some users report slight delays. Ensure all AC-related wiring is correctly connected according to the installation diagrams. If issues persist, verify CANBUS settings.
- **No Sound:** Check speaker connections, volume levels, and audio output settings. Ensure the DSP equalizer is not set to an extreme configuration.
- **GPS Signal Issues:** Ensure the GPS module is properly installed and has a clear line of sight to the sky.
- **Backup Camera Not Displaying:** Verify the camera's power and video signal connections as detailed in Section 4.2. Ensure the reversing line is correctly connected.
- **Steering Wheel Controls Not Working:** Re-program the steering wheel controls as described in Section 5.1. Check physical connections to the steering wheel control wires.

If these steps do not resolve the issue, please contact Junsun's professional after-sales support team for assistance.

9. SPECIFICATIONS

Item Weight	5.02 pounds
Package Dimensions	13.27 x 12.56 x 6.57 inches
Item Model Number	JS-US-XT812CAccord-HS19
Display Size	10 Inches
Screen Size	10 Inches
Operating System	Android 13
RAM	2GB
ROM	32GB
Connectivity Technology	Bluetooth 5.0, Ethernet, USB, Wi-Fi 5G
Special Features	Bluetooth, Lane Assist, Touchscreen, Wireless CarPlay/Android Auto, GPS, DSP, RDS
Map Type	North America
Mounting Type	Dashboard Mount
Audio Output Mode	Stereo

10. WARRANTY AND SUPPORT

Your Junsun Android Car Stereo comes with a **1-year warranty** from the date of purchase.

For any inquiries, technical assistance, or warranty claims, please contact Junsun's professional after-sales support team. They are available 24/7 to provide quick responses and product knowledge assistance.

You can typically find seller contact information on the product's purchase page or through the retailer's support channels.