

Manuals+

[Q & A](#) | [Deep Search](#) | [Upload](#)

Manuals.plus /

› [Harebery](#) /

› Harebery HKJ-50A Replacement Filter Instruction Manual

Harebery HKJ-50A

Harebery HKJ-50A Replacement Filter Instruction Manual

For HUMSURE HKJ-50A Air Purifier

1. INTRODUCTION

This manual provides instructions for the proper installation and maintenance of the Harebery HKJ-50A Replacement Filters. These filters are designed for use with the HUMSURE HKJ-50A Air Purifier to ensure optimal air purification performance.



Image 1.1: Harebery HKJ-50A Replacement Filters and compatible air purifier.

The HKJ-50A filter features a 3-stage filtration system, combining a pre-filter, a main filter, and an activated carbon filter to capture various airborne particles and odors.

2. SAFETY INFORMATION

- Always turn off and unplug the air purifier before attempting to replace the filter.
- Do not operate the air purifier without a filter installed.
- Keep replacement filters in their sealed packaging until ready for use to maintain their effectiveness.
- Dispose of used filters according to local regulations.
- Replace the HEPA filter every 3-6 months for optimal performance and safety.

3. INSTALLATION INSTRUCTIONS

Follow these steps to replace the filter in your HUMSURE HKJ-50A Air Purifier:

1. **Turn off and unplug the air purifier:** Ensure the device is completely powered down and disconnected from the electrical outlet before proceeding.
2. **Locate the filter compartment:** Refer to your air purifier's user manual to identify the filter access panel.
3. **Open the filter compartment and remove the old filter:** Carefully open the compartment and extract the used filter.
4. **Prepare the new filter:** Take one new Harebery HKJ-50A filter from its packaging.
5. **Insert the new filter:** Align the new filter correctly with the filter compartment and gently insert it. Ensure it fits snugly.
6. **Close the filter compartment:** Securely close the filter access panel.
7. **Restore power:** Plug in the air purifier and turn it on.

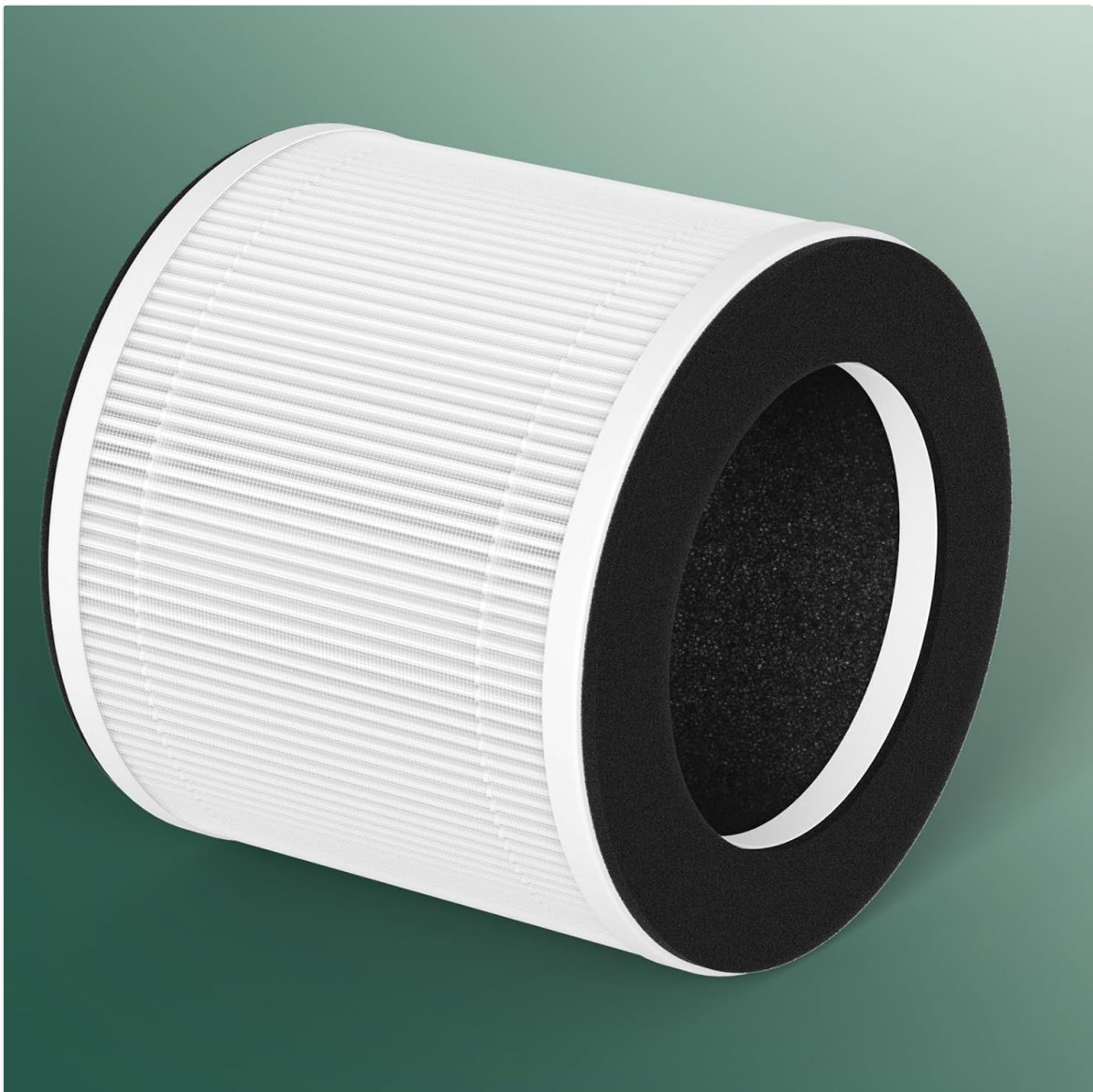


Image 3.1: Harebery HKJ-50A Replacement Filter.

After installation, some air purifiers may require a filter reset. Consult your air purifier's manual for specific instructions on resetting the filter indicator light.

4. MAINTENANCE

Regular filter replacement is crucial for maintaining the efficiency and effectiveness of your air purifier. The Harebery HKJ-50A filter is designed for optimal performance over a specific period.

- **Replacement Frequency:** It is recommended to replace the filter every **3 to 6 months**. This duration may vary depending on air quality, usage frequency, and environmental factors.
- **Indicators:** Your air purifier may have an indicator light or notification system to signal when a filter change is due. Always follow the manufacturer's recommendations for your specific air purifier model.
- **Disposal:** Used filters should be disposed of responsibly.

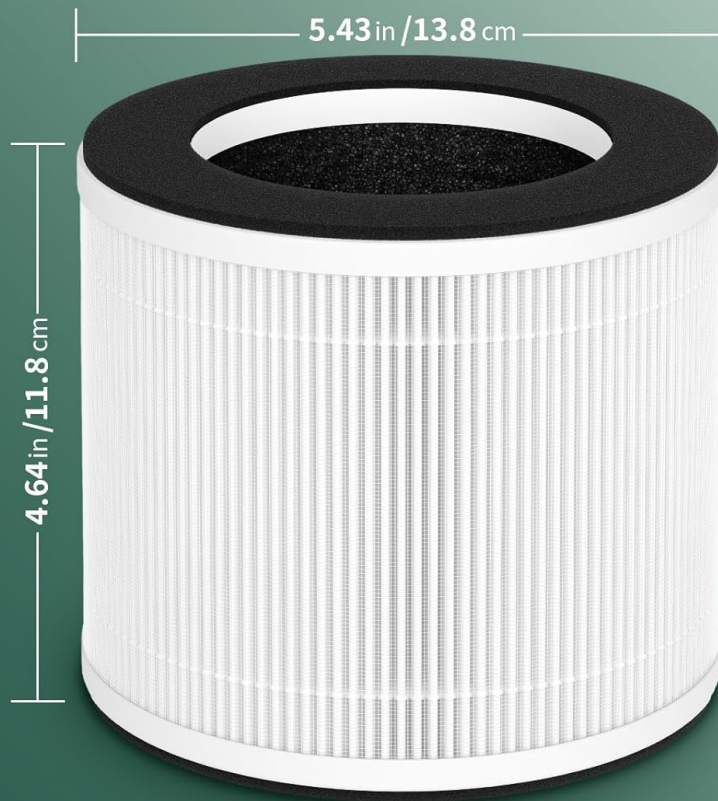
5. PRODUCT SPECIFICATIONS

The following table details the specifications for the Harebery HKJ-50A Replacement Filter:

Feature	Detail
Model Name	HKJ-50A
Compatibility	HUMSURE HKJ-50A Air Purifier
Filter Type	3-Stage Filtration (Pre-filter, Main filter, Activated Carbon filter)
Dimensions (L x W x H)	5.43 x 5.43 x 4.64 Inches (13.8 x 13.8 x 11.8 cm)
Material	Carbon (Activated Carbon layer)
Color	White

PRODUCT DIMENSIONS

! Please confirm the machine model and filter size before purchasing



L x W x H	5.43 x 5.43 x 4.64 Inches	13.8 x 13.8 x 11.8 cm
-----------	---------------------------	-----------------------

Image 5.1: Product Dimensions of the HKJ-50A Filter.

6. TROUBLESHOOTING

If you encounter any issues after replacing your filter, consider the following:

- **Air Purifier Not Turning On:** Ensure the filter compartment is securely closed and the air purifier is properly plugged into a working electrical outlet.
- **Filter Indicator Light Remains On:** Some air purifiers require a manual reset of the filter life indicator after replacement. Refer to your air purifier's specific instructions for this procedure.
- **Reduced Airflow or Odors:** Verify that the new filter is installed correctly and is not obstructed. If the issue persists, the filter may be defective, or the air purifier itself may require servicing.

For further assistance or persistent issues, please contact customer support.

7. WARRANTY AND SUPPORT

For any questions, concerns, or issues regarding your Harebery HKJ-50A Replacement Filters, please feel free to contact us. Our customer support team is available to assist you.

Please refer to the product packaging or the retailer's website for specific warranty details and contact information.