

Manuals+

[Q & A](#) | [Deep Search](#) | [Upload](#)

[manuals.plus](#) /

> [OMOTON](#) /

> [OMOTON KB515-G Bluetooth Keyboard for Mac User Manual](#)

OMOTON KB515-G

OMOTON KB515-G Bluetooth Keyboard for Mac User Manual

Model: KB515-G

INTRODUCTION

This manual provides detailed instructions for the OMOTON KB515-G Bluetooth Keyboard, designed for use with Mac devices. It covers setup, operation, maintenance, and troubleshooting to ensure optimal performance and user experience. The keyboard features a full-size Italian QWERTY layout, multi-device Bluetooth connectivity, and a rechargeable battery.



Image: The OMOTON KB515-G Bluetooth Keyboard, showcasing its full-size Italian QWERTY layout and sleek design.

PACKAGE CONTENTS

- OMOTON KB515-G Bluetooth Keyboard
- Micro USB Charging Cable
- User Manual

SETUP

1. Powering On and Charging

Before initial use, ensure the keyboard is fully charged. Connect the provided Micro USB charging cable to the keyboard's charging port and to a USB power source. The charging indicator light will illuminate during charging and turn off when fully charged.

1. Locate the ON/OFF switch on the top edge of the keyboard.
2. Slide the switch to the "ON" position to power on the keyboard.



Image: Top view of the keyboard highlighting the ON/OFF switch and the Type-C charging port.

2. Bluetooth Pairing

The OMOTON KB515-G keyboard supports connection with up to three devices simultaneously via Bluetooth.

1. Ensure the keyboard is powered on.
2. On your Mac device, navigate to **System Settings** (or **System Preferences** on older macOS versions) > **Bluetooth** and ensure Bluetooth is enabled.
3. On the keyboard, press and hold the **Fn** key and one of the Bluetooth channel keys (**BT1**, **BT2**, or **BT3**) for approximately 3-5 seconds until the corresponding LED indicator starts flashing blue. This indicates the keyboard is in pairing mode.
4. On your Mac device, locate "OMOTON Keyboard" in the list of available Bluetooth devices and click **Connect** or **Pair**.
5. Follow any on-screen prompts to complete the pairing process. Once successfully paired, the blue LED indicator on the keyboard will stop flashing and remain solid for a moment, then turn off.

To pair with additional devices, repeat steps 3-5, selecting a different Bluetooth channel key (BT2 or BT3).



1 far scorrere l'interruttore di rete su OFF-ON



2 attivare la funzione Bluetooth sul dispositivo Mac



3 Premere "Fn + BT1" per alcuni secondi e il LED inizierà a lampeggiare in blu per attivare la modalità di accoppiamento.



4 Selezionare "Tastiera OMOTON" sul dispositivo Mac per completare l'associazione.

Istruzioni per l'accoppiamento

Image: Visual guide showing the steps to turn on the keyboard, activate Bluetooth on Mac, and initiate pairing by pressing Fn + BT1.



Image: A three-panel illustration detailing the pairing process: 1. Sliding the ON/OFF switch, 2. Pressing Fn + BT1 for pairing, 3. Connecting "OMOTON Keyboard" on the device's Bluetooth settings.

OPERATING INSTRUCTIONS

1. Switching Between Paired Devices

To switch between devices that are already paired, simply press the **Fn** key along with the corresponding Bluetooth channel key (**BT1**, **BT2**, or **BT3**) for a short press (not a long press for pairing). The keyboard will connect to the selected device.

Supporta 3 dispositivi contemporaneamente

Premere brevemente per passare da un dispositivo all'altro, premere a lungo per accoppiarlo.



Image: Diagram illustrating the keyboard's ability to connect to three devices (laptop, iMac, iPad) and switch between them using BT1, BT2, and BT3 keys.

2. Function and Multimedia Keys

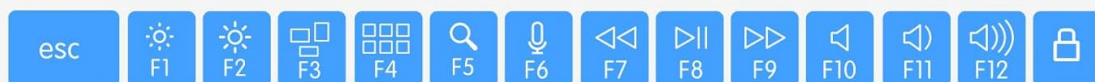
The keyboard features dedicated function keys optimized for macOS, providing quick access to various system controls and multimedia functions. These keys are located in the F-row (F1-F12) and above the numeric keypad.

- **F1**: Brightness Down
- **F2**: Brightness Up
- **F3**: Mission Control
- **F4**: Launchpad
- **F5**: Search (Spotlight)
- **F6**: Activate Dictation / Invoke Siri

- **F7**: Previous Track
- **F8**: Play/Pause
- **F9**: Next Track
- **F10**: Mute
- **F11**: Volume Down
- **F12**: Volume Up

Ottimizzati Pulsanti Multimediali

Tutti i tasti funzione sono disponibili per Mac OS



- | | |
|--|------------------------------|
| F1 Bright Down | F7 Traccia precedente |
| F2 Bright Up | F8 Riproduzione/Pausa |
| F3 Aprire il Controllo Missione | F9 Traccia successiva |
| F4 Aprire il Launchpad | F10 Muto |
| F5 Ricerca | F11 Volume - |
| F6 Attivare la dettatura con una pressione. Invocare Siri con | F12 Volume + |

Image: Close-up of the keyboard's function row, detailing the specific Mac OS functions assigned to each F-key (F1-F12).

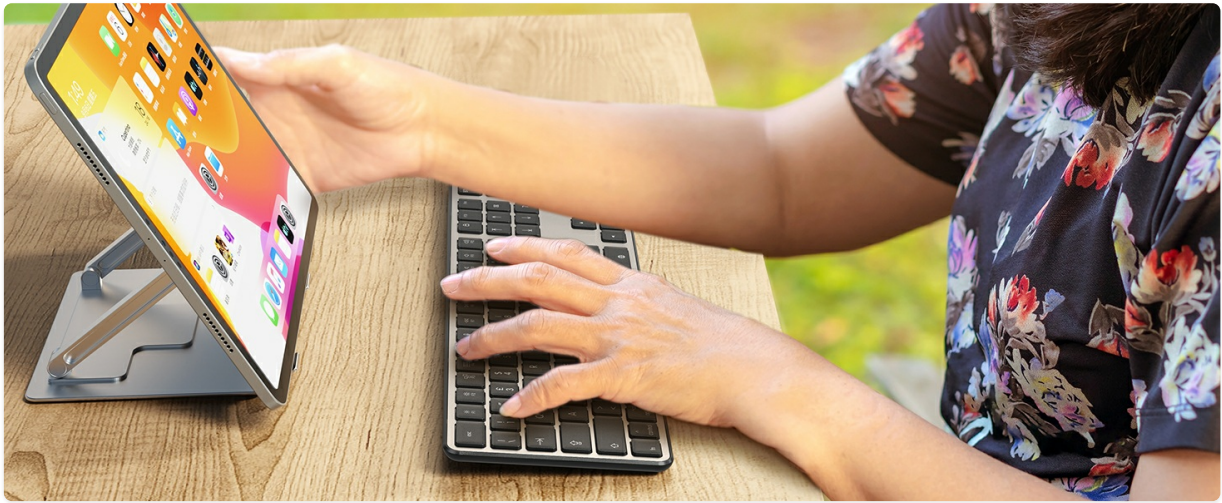


Image: Illustration showing the three Bluetooth channels (BT1, BT2, BT3) and the low battery indicator light, which flashes red when the battery is low.

3. Caps Lock Indicator

The Caps Lock status is indicated by a small blue LED light. When Caps Lock is active, the LED on the currently selected BT channel key (BT1, BT2, or BT3) will illuminate blue.

4. Typing Experience

The keyboard features a scissor-switch mechanism, designed for comfortable and precise typing. This design provides a responsive and quiet typing experience.

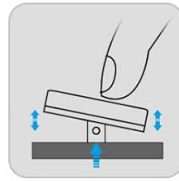
Comoda digitazione

Consente una digitazione comoda e precisa



Meccanismo a forbice

vs



Tasto normale



Image: Diagram comparing the scissor mechanism of the keyboard keys with a traditional key, highlighting the stable and comfortable typing experience.

MAINTENANCE

1. Charging the Keyboard

When the battery is low, the dedicated battery indicator light (located near the BT keys) will flash red. Connect the keyboard to a USB power source using the provided Micro USB cable to recharge. Avoid using damaged cables or chargers. Do not leave the keyboard charging unattended for extended periods.

2. Cleaning

To clean the keyboard, first power it off. Use a soft, lint-free cloth slightly dampened with water or a mild cleaning solution. Avoid excessive moisture and harsh chemicals. Do not spray cleaners directly onto the keyboard. Use compressed air to remove debris from between the keys.

3. Storage

When not in use for an extended period, power off the keyboard to conserve battery life. Store it in a cool, dry place away from direct sunlight and extreme temperatures.

TROUBLESHOOTING

- **Keyboard not connecting/pairing:**
 - Ensure the keyboard is powered on and fully charged.
 - Make sure Bluetooth is enabled on your Mac device.
 - Put the keyboard into pairing mode by pressing and holding Fn + BT1/2/3 until the LED flashes.
 - If previously paired, try "forgetting" the device in your Mac's Bluetooth settings and re-pairing.
 - Restart your Mac and the keyboard.

- **Keys not responding or delayed input:**
 - Check the battery level and recharge if necessary.
 - Ensure the keyboard is within the effective range of your Mac (typically up to 10 meters).
 - Minimize interference from other wireless devices.
 - Clean any debris from under the affected keys.

- **Caps Lock indicator not working:**
 - Ensure the keyboard is connected to a device. The indicator only works when connected.
 - The Caps Lock indicator is on the selected BT channel key (BT1, BT2, or BT3).

SPECIFICATIONS

Model Name	KB515-G
Brand	OMOTON
Connectivity Technology	Bluetooth
Compatible Devices	Mac (MacBook, MacBook Air, MacBook Pro, iMac, iMac Pro, Mac Pro)
Keyboard Description	Flexible, Full-size, Italian QWERTY Layout
Special Feature	Rechargeable, Multi-device (3 channels)
Power Source	Battery powered with USB charging
Switch Type	Linear
Dimensions	44.7 x 13.7 x 3.3 cm (17.6 x 5.4 x 1.3 inches)
Item Weight	660 g (1.46 lbs)
Ergonomic Angle	8 degrees (fixed)

Full Size & Ultra Sottile Tastiera



Image: Diagram showing the dimensions of the full-size, ultra-thin keyboard, including its length (434.5mm/17.1in) and width (121mm/4.8in).



Image: Side view of the keyboard illustrating its fixed 8-degree ergonomic tilt for comfortable typing.

WARRANTY AND SUPPORT

For warranty information or technical support, please refer to the contact details provided with your product packaging or visit the official OMOTON website. Keep your purchase receipt for warranty claims.

For further assistance, you may also contact OMOTON customer service directly.