

## Manuals+

[Q & A](#) | [Deep Search](#) | [Upload](#)

manuals.plus /

> [UKLISS](#) /

> [UKLISS 6-in-1 Hair Dryer Brush & Air Styler \(Model WT-632\) Instruction Manual](#)

## UKLISS WT-632

# UKLISS 6-in-1 Hair Dryer Brush & Air Styler (Model WT-632) Instruction Manual

Your comprehensive guide to safe and effective hair styling.

## 1. INTRODUCTION

Thank you for choosing the UKLISS 6-in-1 Hair Dryer Brush & Air Styler. This versatile styling tool combines multiple functions to help you achieve various hairstyles with ease. Please read this manual thoroughly before use to ensure safe and optimal operation.

## 2. IMPORTANT SAFETY INFORMATION

**WARNING: To reduce the risk of electric shock, burns, fire, or injury to persons:**

- Keep out of reach of children.
- Do not rinse or submerge the appliance in water.
- Keep the power plug and cord away from heated surfaces.
- Do not use the hair styler while bathing or in wet environments.
- Always use the included heat-resistant glove when handling hot attachments to prevent burns.
- Allow the brush to cool completely before cleaning.
- Never immerse the brush in water. Clean only the bristles with a damp cloth if needed.
- The appliance features an ALCI safety plug with leakage protection for secure use.
- An auto-shutoff function prevents overheating.

## 3. PRODUCT OVERVIEW & WHAT'S INCLUDED

The UKLISS 6-in-1 Hair Dryer Brush & Air Styler is designed for comprehensive hair styling. It includes a main unit and multiple interchangeable attachments:

- **Main Unit:** The core device with power and control buttons.
- **Blow Dryer Head:** For pre-drying and general hair drying.
- **Left/Right Air Curler:** Auto-wrap technology for effortless curls.
- **Hot Round Brush:** For volumizing and creating bouncy curls.
- **Straightening Brush:** For smoothing and reducing frizz.

- **Volumizing Hot Air Brush:** For adding volume to roots and bangs.
- **Accessories:** Heat-resistant glove, cleaning brush.



Figure 1: The UKLISS 6-in-1 Hair Dryer Brush and all its included attachments.

# 6 in 1 Hair Brush Dryer Set



## Air hair wrap LEFT/RIGHT curling iron

30.5mm hair curler  
coanda effect  
for natural curls



## Hair dryer head

Pre-dry to stlye hair



## Smoothing hot hair brush

Hair straightning hair  
styleincrease shinny



## Hot thermal brush

Middle Wave curler  
& loose curls(with wind)



## Volumizing hot air brush

Volumizing bangs &  
theroot of hair style



Figure 2: Detailed view of the main unit and all interchangeable styling attachments.

## 4. SETUP

### Attaching and Detaching Accessories

To attach an accessory, align the accessory head with the main unit. Press and hold the lock button, then insert the accessory and rotate it clockwise until it clicks securely into place. To remove, press the lock button and push it downward (unlocking direction) while holding the accessory, then pull it off.

## 3 TEMPERATURE| 1 WIND SPEED

One Key Hot & Cold Alternating Mode



110°C 230°F

0°C 0°F

**SUMMER** Cool wind and cool shape

**WINTER** Hot air heating and quick drying

**SPRING** Warm air constant temperature hair care

Temperature&Wind Speed

1 LOW: lowtemperature 50°C

2 MIDDLE: mediumtemperature 80°C

3 HIGH: hightemperature 110°C

1 Wind Speed: High wind speed

Figure 3: Visual guide for attaching and detaching the styling heads.

## 5. OPERATING INSTRUCTIONS

### General Operation

- Ensure the appliance is plugged into a suitable power outlet (110V).
- Select the desired attachment and secure it to the main unit.
- Turn on the device and select your preferred heat and speed settings.
- Always use on clean, towel-dried hair for best results.

### 5.1. Using the Blow Dryer Head

Attach the blow dryer head to quickly pre-dry your hair before styling. This head provides high-speed airflow for efficient drying.

# 3 Temp Constant Temp Hair Dryer

122–221°F constant temperature drying,  
suitable for all hair types, no need to worry about damaging your hair

**Quick-drying without waiting**



Figure 4: The blow dryer head efficiently dries hair.

## 5.2. Using the Autowrap Magic Styler (Left/Right Air Curler)

The autowrap curlers use airflow to automatically wrap hair, creating effortless curls. Use on semi-wet hair for best results. There are separate attachments for left and right curls.

1. Choose the appropriate curler (left or right) based on the desired curl direction.
2. Take a small section of hair, starting from the ends.
3. Introduce the ends of the hair to the curler. The airflow will automatically wrap the hair around the barrel.
4. Hold for 15 seconds or until hair is dry.

5. Switch off and pull down to release the curl.
6. For long-lasting curls, use mousse or styling spray.

# How to Use Air Curling Iron



Choose curl direction (left/right).



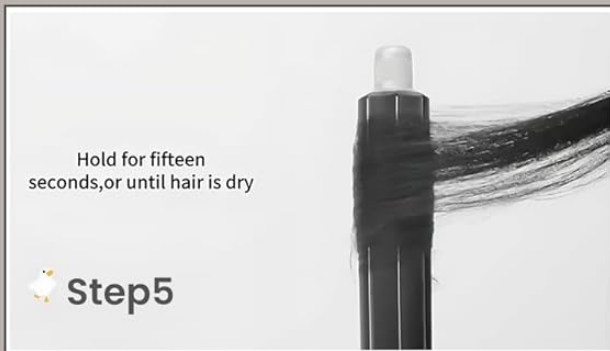
Take a small section, start from ends.



Place hair against iron; if it doesn't cling, switch sides.



Glide iron upward slowly.



Hold 15s with cool/hot air to set.



Turn off, release hair downward.

Figure 5: Step-by-step guide for using the autowrap air curler.

# 1.34" Left/Right Automatic Curl

Adopt air adsorption wrapping technology to automatically adsorb hair and create natural curls

Use on wet hair; style with hot air first, then cool air for better fixation



Left curly hair



Right curly hair

Figure 6: The autowrap curler creates beautiful, effortless curls.

### 5.3. Using the Hot Round Brush & Volumizing Hot Air Brush

These brushes are ideal for adding volume, creating bouncy curls, or styling bangs. The bristles help to lift hair from the roots while drying.

# 230 MILLION NEGATIVE IONS

Hair dryer with comb  
& Round brush  
Smooths frizzy hair

**+60%**  
Smoother

**-50%**  
Frizzier

**+80%**  
Supple



Figure 7: The hot round brush adds volume and shape to hair.

#### 5.4. Using the Straightening Brush

The straightening brush helps to achieve sleek, frizz-free hair without sacrificing natural texture. It gently smooths hair while enhancing volume and wave definition. Note: This brush creates a natural, effortless look, not pin-straight results like traditional straighteners.

# Blow Dryer Hair Smoothing Brush

Apply oil to wet hair and use a detangling brush to keep hair smooth and silky all day long.



It gives you smooth hair, but it cannot directly achieve the effect of straightening curly hair.

Figure 8: The straightening brush provides a smooth, frizz-free finish.

## 5.5. Temperature and Speed Settings

The device offers three adjustable heat settings and high-speed airflow to cater to various hair types and styling needs:

- **Low Setting:** 122°F (50°C) - Gentle drying and styling.
- **Mid Setting:** 176°F (80°C) - Medium heat for regular drying and styling.
- **High Setting:** 230°F (110°C) - High heat for fast drying and styling.

The device also features a cool shot function to set your style.



Figure 9: Temperature and speed settings for customized styling.

## 6. MAINTENANCE

Proper maintenance ensures the longevity and performance of your UKLISS Hair Dryer Brush & Air Styler:

- **Cleaning:** Allow the brush to cool completely before cleaning. Use the included cleaning brush to remove any trapped hair from the bristles. For the main unit and non-bristle attachments, wipe with a soft, dry cloth. Never immerse the device or any attachment in water.
- **Storage:** Store the device and its attachments in a cool, dry place. The 360° swivel cord prevents tangling during storage and use.

## 7. TROUBLESHOOTING

If you encounter any issues with your device, please refer to the following common troubleshooting steps:

- **Device Not Turning On:** Ensure the ALCI safety plug is fully reset and properly plugged into a working power outlet. Check for any visible damage to the power cord.
- **Attachments Not Securing:** Ensure the accessory is correctly aligned and the lock button is fully engaged and rotated clockwise until it clicks.
- **Hair Not Curling/Straightening Effectively:** Ensure your hair is at the appropriate dampness (semi-wet for curling, towel-dried for brushes). Verify that the correct heat and speed settings are selected for your hair type. Take smaller sections of hair for better results.
- **Excessive Frizz:** Ensure you are using the ionic technology effectively. Try applying a heat protectant or anti-frizz serum before styling.
- **Overheating:** The device has an auto-shutoff function. If it overheats, unplug it and allow it to cool down completely before attempting to use it again. Clean any lint or hair from the air inlet.

If problems persist, please contact customer support.

## 8. SPECIFICATIONS

Feature	Specification
Brand	UKLISS
Model Number	WT-632

Product Dimensions	12.8 x 8.8 x 3 inches
Weight	2.4 Pounds
Color	White
Material	Plastic
Wattage	800.0 W
Power Source	Corded Electric

## 9. OFFICIAL PRODUCT VIDEOS

---

Watch these official UKLISS videos for visual demonstrations and tips:

### **Unlock Your 6 In 1 Hot Air Brush's Full Potential!**

This video provides a comprehensive overview of the UKLISS 6-in-1 Hot Air Brush, demonstrating its various functions and how to maximize its potential for different hairstyles.

### **Effortless Curls with Autowrap Technology!**

Learn how to create beautiful, effortless curls using the innovative Autowrap Technology of the UKLISS Air Styler. This video highlights the ease of use and stunning results.

### **Ukliss Auto Curler: Salon Hair at Home!**

This video showcases how the UKLISS Auto Curler can help you achieve salon-quality curls from the comfort of your home, emphasizing convenience and professional results.

### **Auto Curling for Beginners: Perfect Waves in 15 Secs**

A quick guide for beginners on how to use the auto-curling feature to create perfect waves in just 15 seconds, demonstrating speed and simplicity.

### **Ukliss 6 in 1 Blow Dryer Brush**

This short video provides a concise demonstration of the UKLISS 6-in-1 Blow Dryer Brush in action, showcasing its various uses and benefits.

## 10. WARRANTY AND SUPPORT

---

For warranty information or customer support, please refer to the product packaging or contact the manufacturer directly. Ensure to keep your purchase receipt for any warranty claims.