

Jawbone JAW-TWE-STLTH

Jawbone Jambuds Wireless Bluetooth Earbuds Instruction Manual

Model: JAW-TWE-STLTH

1. INTRODUCTION

This manual provides detailed instructions for the setup, operation, maintenance, and troubleshooting of your Jawbone Jambuds Wireless Bluetooth Earbuds. Please read this manual thoroughly before using your earbuds to ensure optimal performance and longevity.



Image 1.1: Jawbone Jambuds Earbuds and Charging Case.

2. PACKAGE CONTENTS

Verify that all items are present in the package:

- Jambuds™ Stealth TWS earbuds
- Charging case
- User manual (this document)
- Small & large-size extra eartips
- USB Type-C charging cable

3. SETUP

3.1 Initial Charging

Before first use, fully charge both the earbuds and the charging case.

1. Connect the USB Type-C charging cable to the charging port on the case and to a power source.
2. The charging case requires approximately 1.5 hours for a full charge.
3. Place the earbuds into the charging case. The earbuds require approximately 1 hour for a full charge.
4. A full charge provides up to 4 hours of playback for the earbuds, with the case offering six additional full recharges.

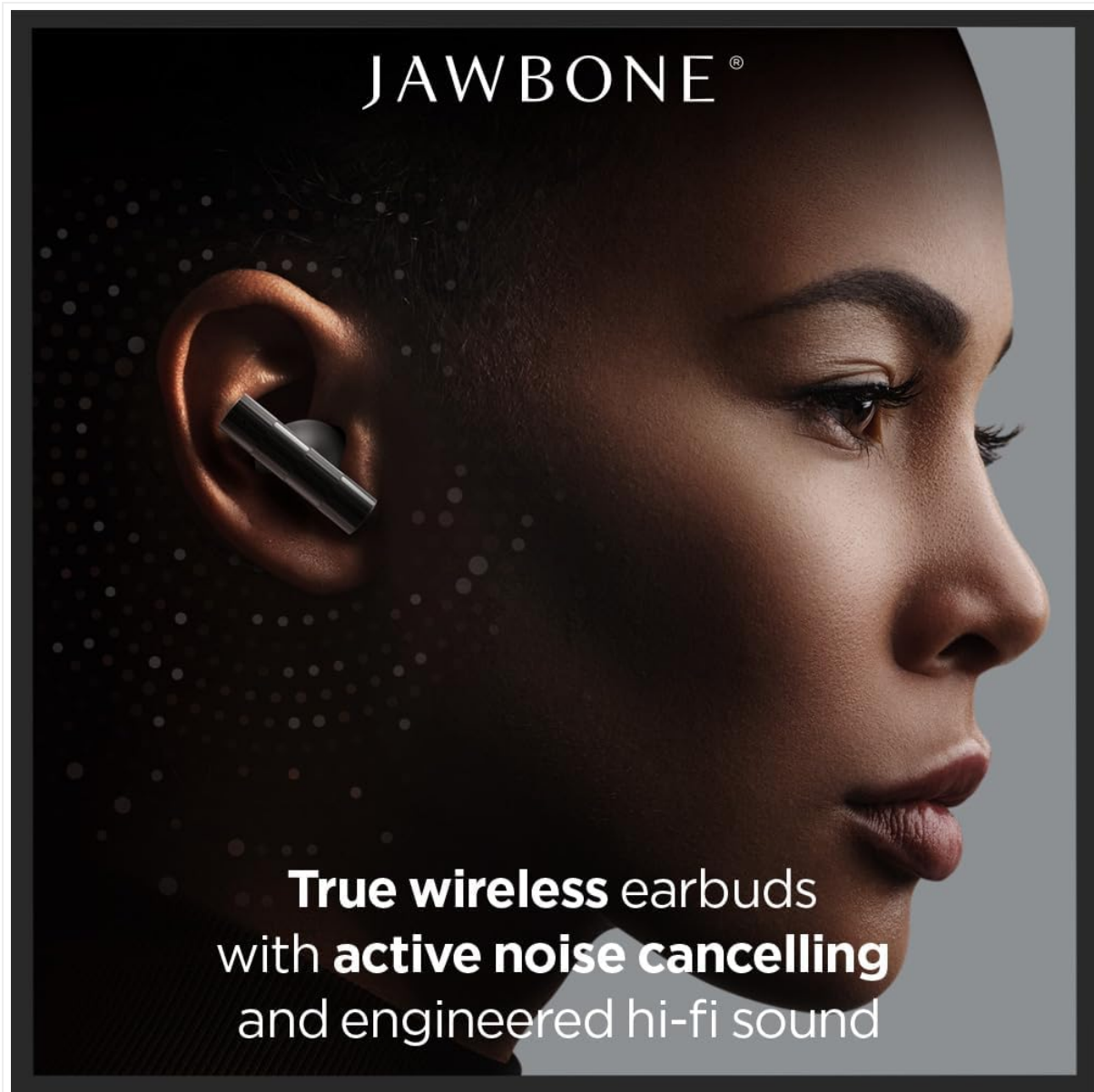


Image 3.1: The Jawbone Jambuds charging case features a textured fabric body and magnetic clasp.

3.2 Bluetooth Pairing

The Jawbone Jambuds utilize Bluetooth 5.3 for stable and efficient connectivity.

1. Ensure the earbuds are charged and placed inside the charging case.
2. Open the charging case. The earbuds will automatically enter pairing mode.
3. On your device (smartphone, tablet, laptop), navigate to the Bluetooth settings.
4. Select "Jawbone Jambuds" from the list of available devices to pair.
5. Once paired, the earbuds will automatically connect to your device when removed from the case and within range.

4. OPERATING INSTRUCTIONS

4.1 Basic Controls (Touch)

The Jambuds feature intuitive touch controls on each earbud.

- **Play/Pause Music:** Tap the center of either earbud once.
- **Answer/End Call:** Tap the center of either earbud once.
- **Reject Call:** Touch and hold either earbud for 2 seconds.
- **Volume Down:** Double tap the **left** earbud.
- **Volume Up:** Double tap the **right** earbud.
- **Previous Track:** Triple tap the **left** earbud.
- **Next Track:** Triple tap the **right** earbud.

4.2 Active Noise Cancellation (ANC) and Ambient Mode

The earbuds offer Active Noise Cancellation (ANC) to minimize external sounds and Ambient Mode to allow you to hear your surroundings.

- **Toggle ANC/Ambient Mode:** Touch and hold either earbud for 2 seconds.

4.3 Voice Assistant

Activate your device's voice assistant for hands-free control.

- **Activate Voice Assistant:** Tap either earbud once, release, then touch and hold for 2 seconds.



Image 4.1: The earbuds are designed for a comfortable fit, delivering clear audio with active noise cancellation.



Video 4.1: An overview of the Jawbone Jambuds Wireless Bluetooth Earbuds, highlighting key features and design.

5. MAINTENANCE

To ensure the longevity and optimal performance of your Jawbone Jambuds, follow these maintenance guidelines:

- **Cleaning:** Regularly clean the earbuds and charging case with a soft, dry, lint-free cloth. Avoid using abrasive materials or harsh chemicals.
- **Water Resistance:** The earbuds have an IPX4 water-resistance rating, meaning they are resistant to sweat and splashes. They are not designed for submersion in water. Ensure the charging port is dry before charging.
- **Storage:** When not in use, store the earbuds in their charging case to protect them and keep them charged. Store in a cool, dry place away from extreme temperatures.

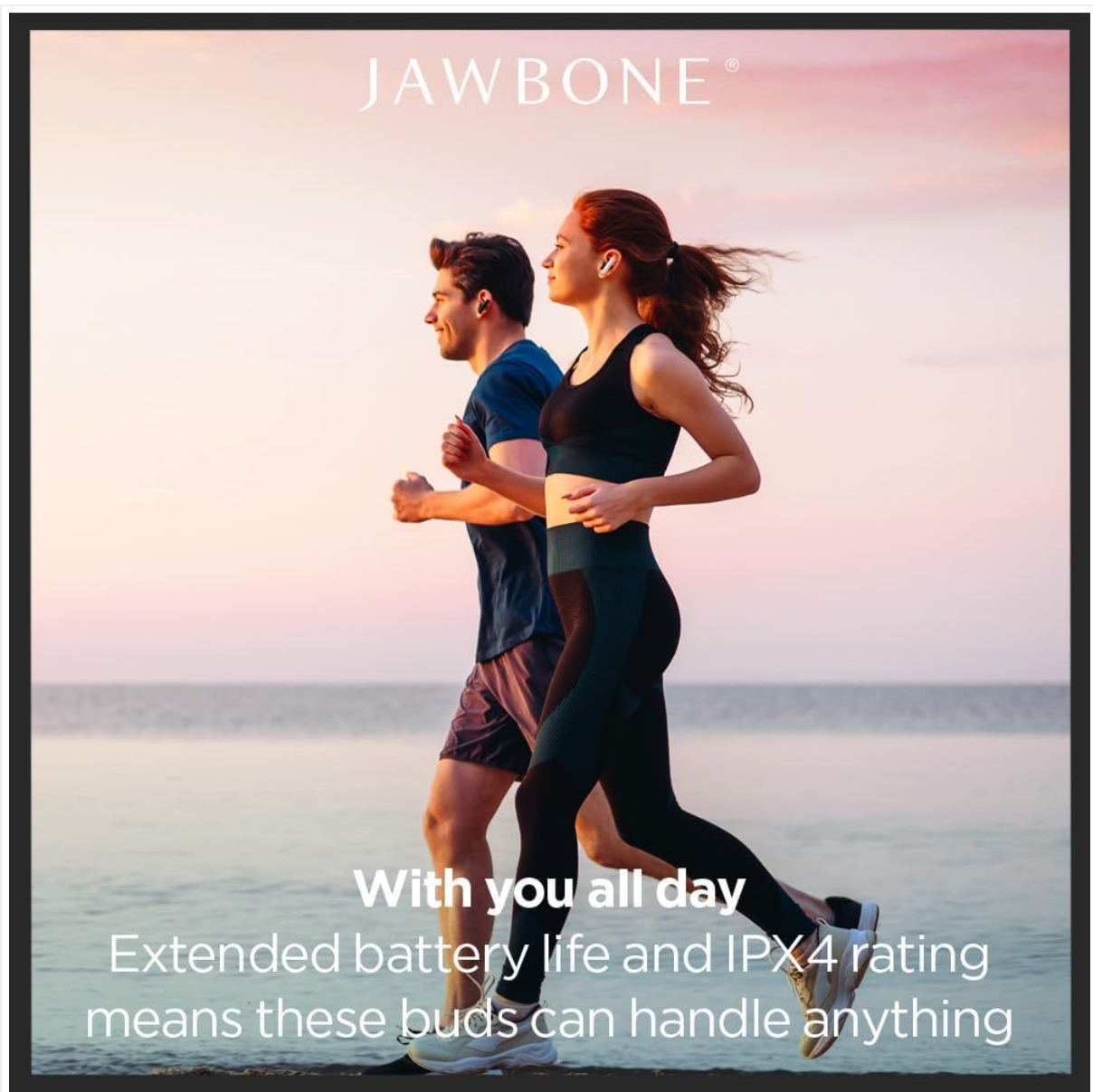


Image 5.1: The IPX4 water-resistant rating makes the earbuds suitable for active use, such as running.

6. TROUBLESHOOTING

If you encounter issues with your Jawbone Jambuds, refer to the following common solutions:

- **Earbuds not pairing:**
 - Ensure both earbuds and the charging case are fully charged.
 - Place earbuds back in the case, close the lid, then open it again to re-enter pairing mode.
 - Forget "Jawbone Jambuds" from your device's Bluetooth settings and attempt to pair again.
 - Perform a factory reset (refer to manufacturer's specific instructions if available, otherwise try holding the case button for 10 seconds).
- **No sound or low volume:**
 - Check the volume level on both your device and the earbuds using the touch controls.
 - Ensure the earbuds are properly seated in your ears.
 - Verify that the earbuds are connected to the correct device.
- **Charging issues:**

- Ensure the USB-C cable is securely connected to both the case and the power source.
 - Try a different USB-C cable or power adapter.
 - Clean the charging contacts on both the earbuds and inside the case with a dry cotton swab.
- **Touch controls unresponsive:**
 - Ensure your fingers are clean and dry when using touch controls.
 - Restart the earbuds by placing them in the case, closing the lid, and then reopening it.

7. SPECIFICATIONS

Feature	Detail
Model Name	Jambuds
Item Model Number	JAW-TWE-STLTH
Connectivity Technology	Bluetooth, Wireless
Bluetooth Version	5.3
Audio Driver Size	10 Millimeters
Frequency Response	20Hz-20kHz
Noise Control	Active Noise Cancellation
Battery Life (Earbuds)	4 Hours
Charging Case Recharges	6 full recharges
Earbud Charging Time	1 Hour
Case Charging Time	1.5 Hours
Water Resistance Level	IPX4 (Water Resistant)
Control Type	Touch Control
Compatible Devices	Cellphones, Laptops, Tablets (Android, iOS)
Item Weight	0.22 Kilograms (7.8 ounces)
Material	Plastic

8. WARRANTY AND SUPPORT

For information regarding warranty coverage, technical support, or service, please refer to the warranty card included with your product or visit the official Jawbone website.