

## LIECTROUX X6

# LIECTROUX X6 Robotic Vacuum Cleaner and Mop User Manual

Model: X6

## INTRODUCTION

This manual provides essential information for the safe operation, maintenance, and troubleshooting of your LIECTROUX X6 Robotic Vacuum Cleaner and Mop. Please read this manual thoroughly before using the product and retain it for future reference. The LIECTROUX X6 is designed to provide efficient and comprehensive cleaning for various floor types, utilizing advanced navigation and smart features.

## PRODUCT OVERVIEW

### Key Features

- **Deep Cleaning Power:** 6500Pa suction for efficient cleaning of hard floors, pet hair, and carpets.
- **LSD LIDAR Navigation:** Precise navigation and mapping for systematic cleaning.
- **Precision Mapping:** Customizable cleaning routes and schedules for personalized cleaning.
- **Wi-Fi Connectivity:** Control and schedule cleanings remotely through the app or voice assistants.
- **Voice Control:** Compatible with voice assistants for hands-free control.
- **Advanced Filtration System:** Captures 99.97% of dust, dirt, and allergens for cleaner air.
- **Remote and App Control:** Schedule cleanings, adjust settings, and monitor progress remotely.
- **Pet Hair and Allergy Friendly:** Effectively picks up pet hair, dust, and allergens for a cleaner environment.

### Included Components

- 1 x Robotic Vacuum
- 1 x Charging Dock
- 1 x Charging Adaptor
- 1 x 2-in-1 Dustbin and Water Tank
- 2 x Pairs of Side Brushes
- 2 x Re-usable Wet Mopping Cloth
- 1 x Mop Pad
- 1 x Cleaning Brush
- 2 x HEPA Filter
- 1 x User Manual

## Product Visuals



Figure 1: The LIECTROUX X6 Robotic Vacuum Cleaner and Mop, showcasing its sleek design, the accompanying mobile app interface for control, and the integrated water tank for mopping functionality.

# Dust box and water tank integrated

## Effortlessly worry-free cleaning



400ml large  
dust box



235ml large  
water tank



Fine seepage



Intelligent  
electronic control

Mopping

Sweeping and  
Vacuuming

Sweeping

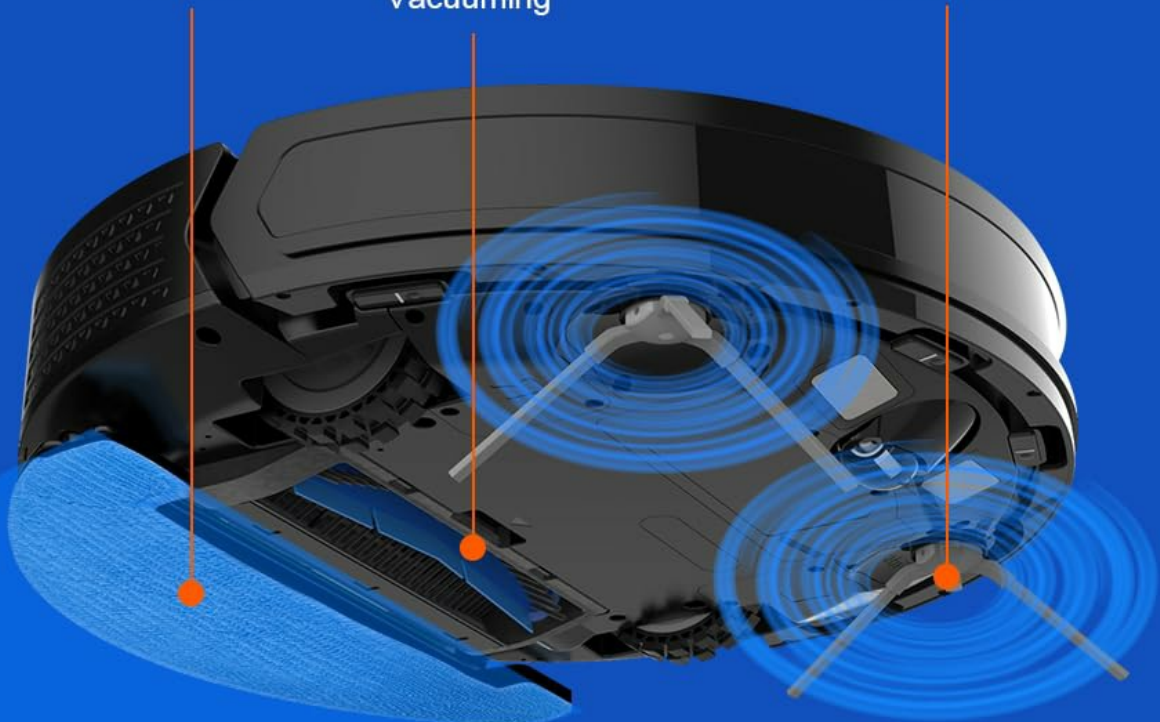


Figure 2: Illustration of the integrated dust box and water tank system, highlighting the 400ml large dust box and 235ml large water tank, designed for effortless and worry-free cleaning. It also shows the sweeping, vacuuming, and mopping functions.

# LDS laser radar metering



LDS laser navigation



Precision mapping



Multi-layer map management



Y-routed floor mopping



Custom Deep Cleaning



Figure 3: The LDS laser radar metering system in action, demonstrating its capabilities for LDS laser navigation, precision mapping, multi-layer map management, Y-routed floor mopping, and custom deep cleaning.



# APP Visual Maps

## Whole house cleaning



House-wide  
cleaning



Routed  
Cleaning



Specified-area  
cleaning



Scheduled  
cleaning task



Suction level  
adjustment



Figure 4: The mobile application interface displaying visual maps for whole house cleaning, including features like house-wide cleaning, routed cleaning, specified-area cleaning, scheduled cleaning tasks, and suction level adjustment.

## Multiple custom cleaning modes make cleaning more efficient and thorough



Selective  
Areas Cleaning



Cleaning  
order



Restricted  
Zone Setting



Palm Virtual  
Blocker



Areas Cleaning  
Frequency



Figure 5: Depiction of multiple custom cleaning modes for efficient and thorough cleaning, such as Selective Areas Cleaning, Cleaning Order, Restricted Zone Setting, Palm Virtual Blocker, and Areas Cleaning Frequency.

# Comprehensive Breakthrough Micro Electric Control + Air Pump Water Tank



**Basic wet mopping**



**Low**



**Normal wet mopping**



**Medium**



**Deep wet mopping**



**High**

Figure 6: Illustration of the comprehensive breakthrough in Micro Electric Control and Air Pump Water Tank technology, showing different levels of wet mopping: Basic (Low), Normal (Medium), and Deep (High).



# Automatic Recharging Break-point Resume Cleaning

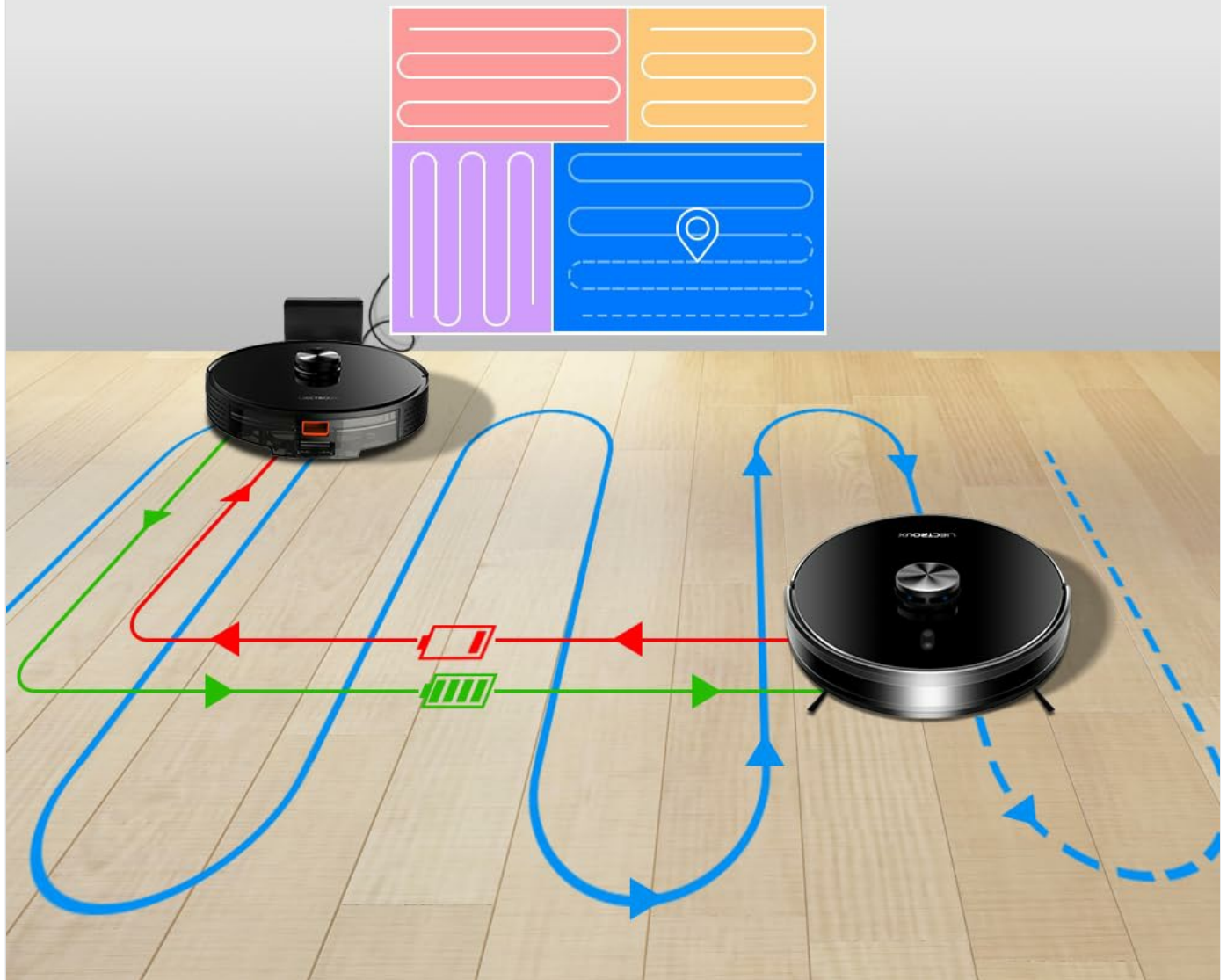


Figure 7: Diagram illustrating the automatic recharging feature and breakpoint resume cleaning, where the robot returns to its charging dock when battery is low and resumes cleaning from where it left off once sufficiently charged.



# Y-routed cleaning

## No residual stains

Y-routed cleaning for repeated mopping and sweeping, imitating artificial kneeling-type cleaning;  
Easy, effortless and thorough cleaning.



Figure 8: Visual representation of the Y-routed cleaning pattern, designed for repeated mopping and sweeping, imitating artificial kneeling-type cleaning for thorough stain removal.

# Multi-layer map management



Areas  
segmentation



Areas  
consolidation



Recovering  
partition



Areas  
naming

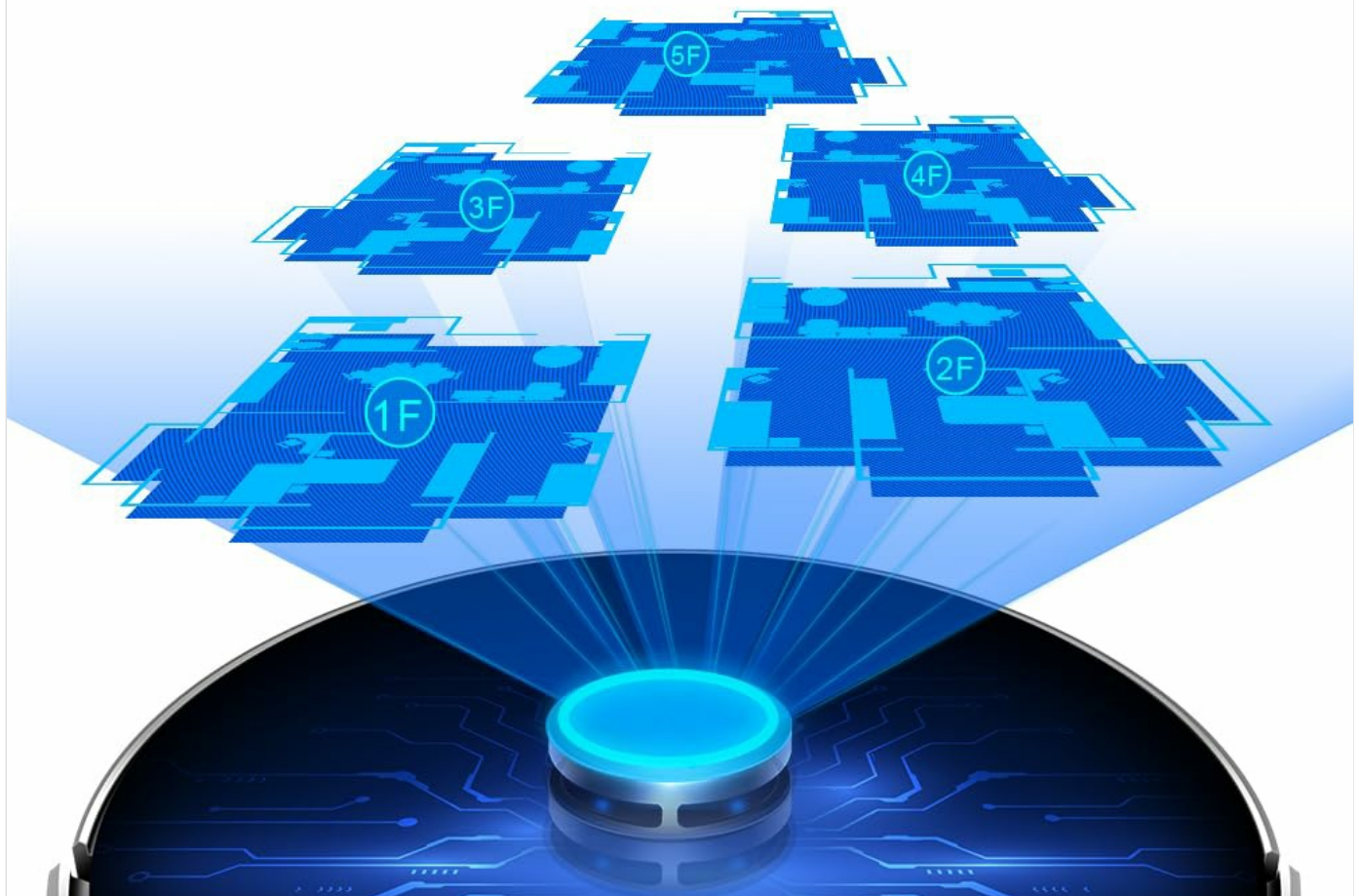


Figure 9: Depiction of the multi-layer map management feature, allowing for areas segmentation, areas consolidation, recovering partition, and areas naming across multiple floors (1F to 6F shown).



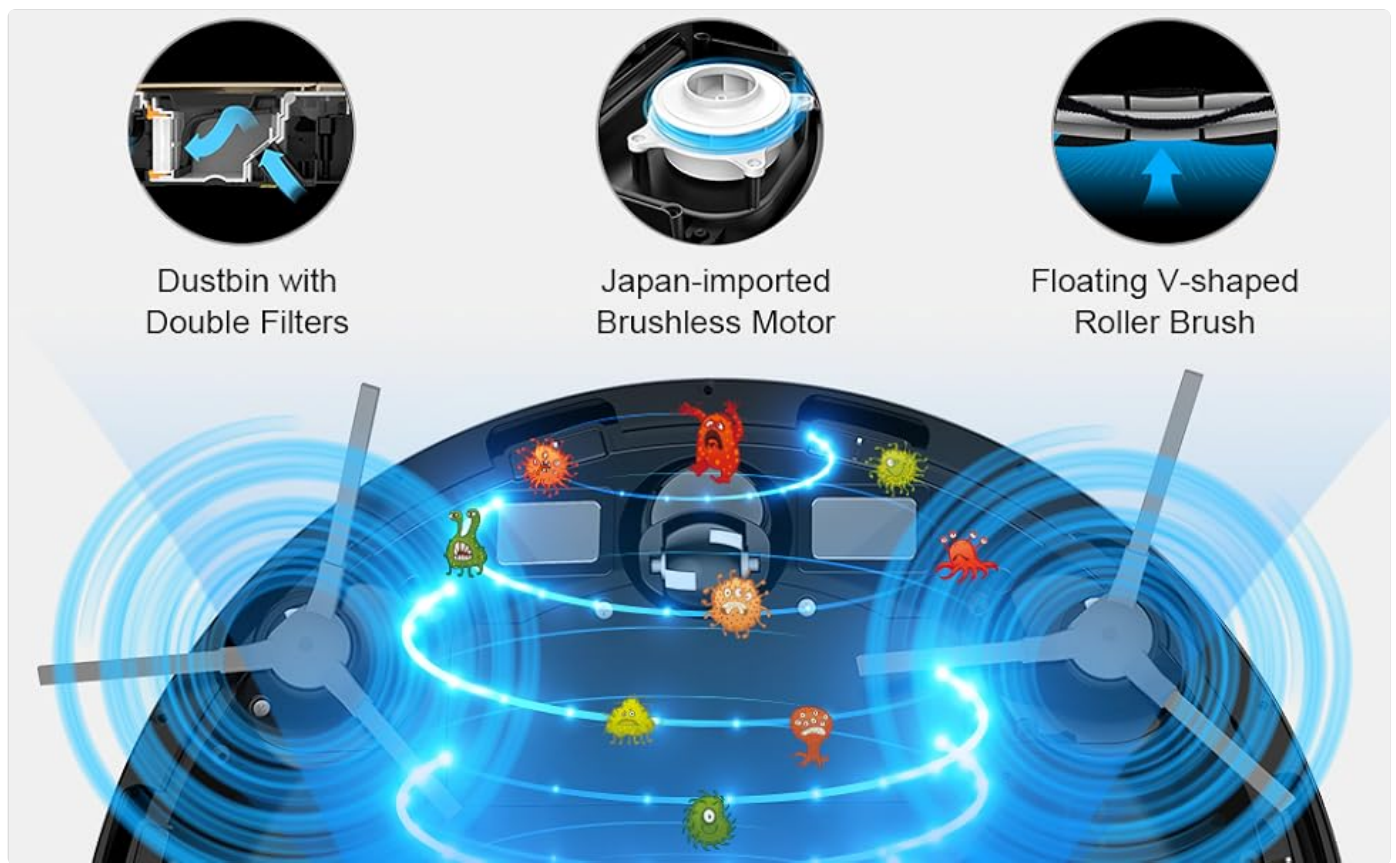


Figure 10: Close-up view of key internal components, including the dustbin with double filters, the Japan-imported brushless motor, and the floating V-shaped roller brush, designed for efficient debris collection.

## SETUP

---

### 1. Unpacking

Carefully remove all components from the packaging. Ensure all included items listed in the "Included Components" section are present. Remove any protective films or packing materials from the robot and charging dock.

### 2. Charging Dock Placement

- Place the charging dock against a wall on a hard, level surface.
- Ensure there is at least 0.5 meters (1.6 feet) of clear space on both sides of the dock and 1.5 meters (4.9 feet) in front of it.
- Keep the area free of obstacles, such as furniture or power cords, that could obstruct the robot's return to the dock.
- Connect the power adapter to the charging dock and plug it into a wall outlet.

### 3. Initial Charge

Place the robot onto the charging dock, ensuring the charging contacts align. The robot will begin charging automatically. For optimal battery life, fully charge the robot before its first use. The indicator light on the robot will show charging status.

### 4. App Installation and Connection

- Download the official LIECTROUX app from your mobile device's app store (iOS or Android).
- Open the app and follow the on-screen instructions to create an account and add your LIECTROUX X6 robot.
- Ensure your Wi-Fi network is 2.4GHz, as the robot may not support 5GHz networks.
- The app will guide you through connecting the robot to your home Wi-Fi network.

## OPERATING INSTRUCTIONS

---



## 1. Starting a Cleaning Cycle

- **From the Robot:** Press the power button on the robot once to start an automatic cleaning cycle.
- **From the App:** Open the LIECTROUX app, select your robot, and tap "Start Cleaning" or choose a specific cleaning mode.
- **Voice Control:** If connected to a voice assistant (e.g., Amazon Alexa, Google Assistant), use voice commands like "Alexa, tell [Robot Name] to start cleaning."

## 2. Cleaning Modes

- **Auto Cleaning:** The robot intelligently navigates and cleans the entire accessible area.
- **Spot Cleaning:** Directs the robot to clean a specific small area intensively. Ideal for spills or concentrated dirt.
- **Zone Cleaning:** Use the app to define specific zones on the map for the robot to clean.
- **Scheduled Cleaning:** Set up recurring cleaning times and days through the app.
- **Restricted Zones/Virtual Walls:** Use the app to draw virtual boundaries or restricted zones on the map to prevent the robot from entering certain areas.

## 3. Mopping Function

- Fill the water tank with clean water. Do not use cleaning solutions that are not approved by LIECTROUX.
- Attach the mopping cloth to the water tank.
- Insert the 2-in-1 dustbin and water tank into the robot.
- Select a mopping mode or a combined vacuuming and mopping mode via the app. Adjust water flow levels (Low, Medium, High) as needed.

## 4. Pausing and Resuming

Press the power button on the robot or use the app to pause a cleaning cycle. Press again to resume. If the robot returns to the charging dock due to low battery, it will automatically resume cleaning from where it left off once sufficiently charged.

## 5. Returning to Charging Dock

The robot will automatically return to its charging dock when the battery is low or when a cleaning cycle is complete. You can also manually send it back via the app or by pressing and holding the power button on the robot.

## MAINTENANCE

---

Regular maintenance ensures optimal performance and extends the lifespan of your LIECTROUX X6. Always power off the robot before performing any maintenance.

### 1. Emptying the Dustbin

- Press the dustbin release button and pull out the 2-in-1 dustbin and water tank.
- Open the dustbin lid and empty its contents into a trash can.
- *Frequency: After each use or when full.*

### 2. Cleaning the Filters

- Remove the HEPA filter and sponge filter from the dustbin.
- Tap the filters gently to remove dust. Do not wash HEPA filters with water.
- The sponge filter can be rinsed with water and air-dried completely before reinstallation.
- *Frequency: Weekly, replace HEPA filter every 3-6 months.*

### 3. Cleaning the Main Brush

- Flip the robot over and remove the main brush cover.

- Lift out the main brush. Use the provided cleaning tool to remove hair and debris tangled around the brush.
- *Frequency: Weekly.*

#### 4. Cleaning the Side Brushes

- Inspect side brushes for damage or tangled hair.
- If necessary, remove the side brushes (they usually snap on/off) and clean them. Replace if worn.
- *Frequency: Monthly, replace every 3-6 months.*

#### 5. Cleaning Sensors and Charging Contacts

- Wipe the cliff sensors (located on the bottom of the robot), wall sensors, and charging contacts on both the robot and the charging dock with a clean, dry cloth.
- *Frequency: Monthly.*

#### 6. Cleaning the Mopping Cloth

- Remove the mopping cloth after each mopping cycle.
- Rinse it thoroughly with water and allow it to air dry completely before storing or reattaching.
- *Frequency: After each mopping use.*

### TROUBLESHOOTING

If your LIECTROUX X6 encounters an issue, refer to the following common problems and solutions:

Problem	Possible Cause	Solution
Robot does not turn on or charge.	Battery is completely depleted; charging contacts are dirty; power adapter not connected.	Ensure robot is properly seated on the charging dock. Clean charging contacts on both robot and dock. Check power adapter connection.
Robot gets stuck frequently.	Obstacles (cables, rugs); cliff sensors dirty; robot stuck on high thresholds.	Clear obstacles from cleaning path. Clean cliff sensors. Use virtual walls/restricted zones for problematic areas.
Poor suction performance.	Dustbin full; filter clogged; main brush tangled; suction inlet blocked.	Empty dustbin. Clean/replace filters. Clean main brush and side brushes. Check suction inlet for blockages.
Robot cannot connect to Wi-Fi.	Incorrect Wi-Fi password; 5GHz network; robot too far from router.	Ensure correct 2.4GHz Wi-Fi network is selected. Re-enter password carefully. Move robot closer to router during setup.
Mopping function is not working.	Water tank empty; mopping cloth not attached; water outlet clogged.	Fill water tank. Ensure mopping cloth is properly attached. Check water outlets for blockages.

For issues not listed here, please refer to the comprehensive troubleshooting section in the full user manual or contact customer support.

### SPECIFICATIONS

Feature	Detail
Brand	LIECTROUX

Feature	Detail
Model Name	X6
Suction Power	6500Pa
Navigation Type	LSD Laser Navigation, Precision Mapping
Dust Collector Capacity	400ml
Water Tank Capacity	235ml
Filter Type	HEPA
Battery Life	Up to 120 Minutes
Control Method	App Control, Voice Control
Product Dimensions	33L x 33W x 6H Centimeters
Item Weight	4 kg
Color	Black

## WARRANTY AND SUPPORT

Your LIECTROUX X6 Robotic Vacuum Cleaner and Mop comes with a standard manufacturer's warranty. Please refer to the warranty card included in your product packaging for specific terms and conditions, including warranty period and coverage details.

For technical support, service, or warranty claims, please contact LIECTROUX customer service. Contact information can typically be found on the official LIECTROUX website or on the product packaging.

It is recommended to register your product online to receive updates and support.