

SMARTSTANDARD M-BDM-HB2-TKJ-WH

SMARTSTANDARD Bifold Barn Door 24" x 84" Instruction Manual

Model: M-BDM-HB2-TKJ-WH | Brand: SMARTSTANDARD

1. PRODUCT OVERVIEW

This manual provides comprehensive instructions for the assembly, installation, operation, and maintenance of your SMARTSTANDARD Bifold Barn Door. Designed for space-saving and ease of use, this door system enhances various living spaces.

Key Features:

- **Space-Saving Design:** Bi-fold butt hinges allow the door to fold completely, reducing the space required by 50%.
- **Durable Construction:** Panels crafted from primed MDF, offering a flatter, smoother, and sturdier build than traditional wood doors.
- **Enhanced Durability:** Waterproof and scratch-resistant features for increased longevity.
- **Robust Hardware:** Heavy-duty black steel hardware kit for strength, wear, and corrosion resistance.
- **Easy Assembly:** Pre-finished and pre-drilled components with clear, sequential instructions.

2. PACKAGE CONTENTS

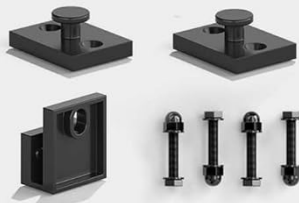
Verify that all components listed below are present in your package before beginning assembly.

Packing List

Complete accessories & Professional Manual



Bottom Pivot Plate & Sleeve



Pulley Base



Wall Spacer Kit (x3)



Pulley



Bi-Fold Door Butt Hinges(x3)



Handle



Assembled door



Professional Manual



Rail and Wall Spacer

Figure 2.1: Complete accessories and professional manual included in the package.

List of Components:

- Finished MDF Bifold Barn Doors (24"x84")
- 2.33FT Track Kit
- Handle
- Fixed Roller
- Fixed Roller Lock Bracket (x2)
- Bottom Pivot Plate & Sleeve
- Butt Hinges (x3)
- Anti-collision strip
- All necessary hardware for assembly
- Installation Instructions Manual

3. INSTALLATION GUIDE

The SMARTSTANDARD Bifold Barn Door is designed for straightforward installation with pre-drilled holes and pre-finished components. Follow these sequential steps for proper setup.

3.1 Pre-Installation Considerations

- **Door Dimensions:** Door panel size is 24"W x 84"H, with a thickness of 1 3/8". The track length is 28".
- **Opening Size:** The door width should be the door opening size (Max 22") + 2".
- **Clearance:** Ensure at least 6" clearance from the top of the door to the ceiling.



Size Choice	Fit Opening Width	Track length	Weights(LB)
A: 24"*84"	Max 22"	28"	71
B: 28"*84"	Max 26"	32"	79
C: 30"*84"	Max 28"	34"	83
D: 32"*84"	Max 30"	36"	85
E: 36"*84"	Max 34"	40"	86
F: 40"*84"	Max 38"	44"	92

Figure 3.1: Door dimensions and clearance requirements.

3.2 Assembly Steps

The stacked doors are assembled and finished. The following steps detail the hardware installation.

Easy to Install

Stacked doors are assembled and finished

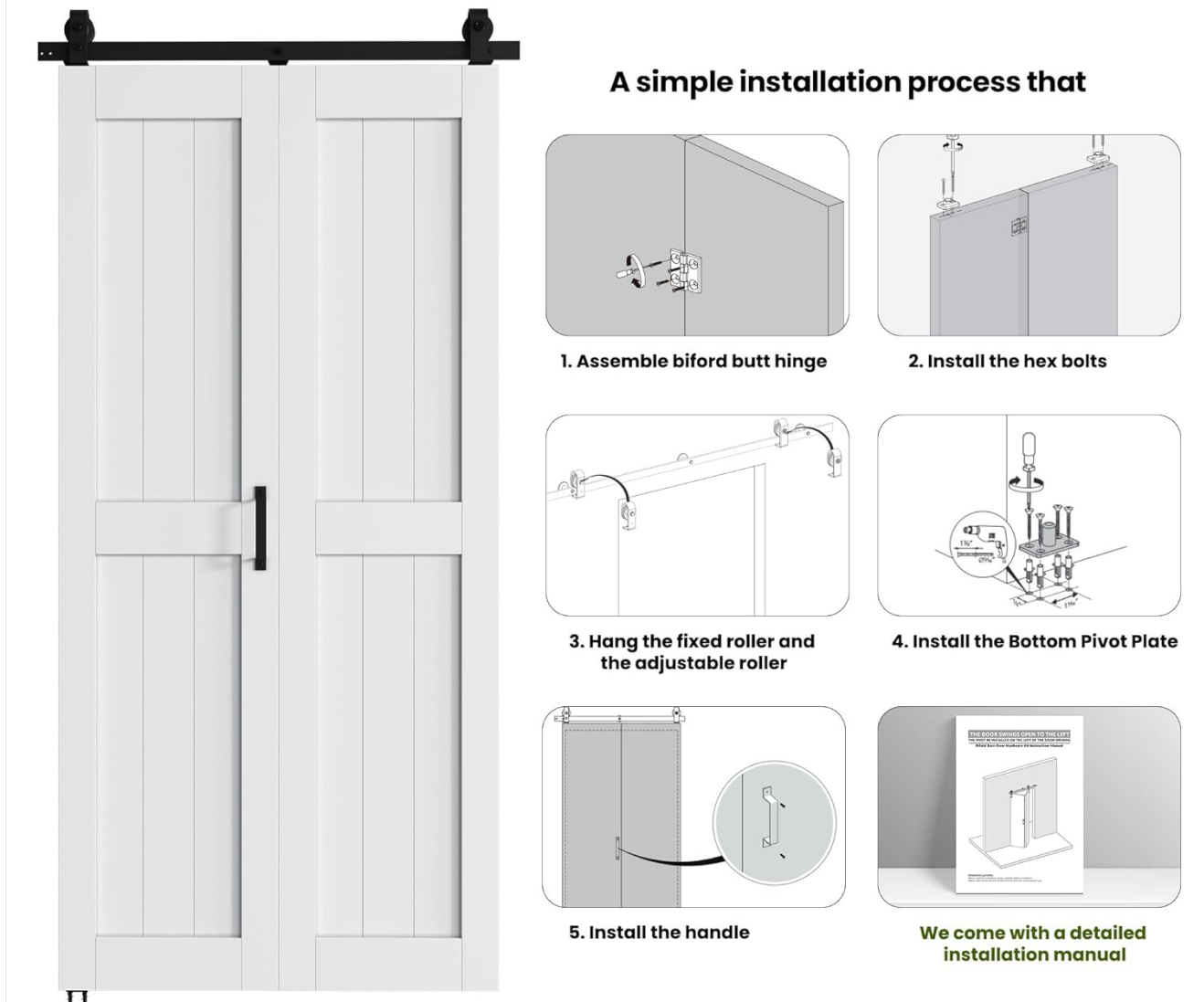


Figure 3.2: Overview of the installation process.

- 1. Assemble Bifold Butt Hinges:** Attach the bifold butt hinges to the door panels as indicated in the detailed manual.
- 2. Install Hex Bolts:** Secure the hex bolts into the designated pre-drilled holes on the door panels.
- 3. Hang Fixed and Adjustable Rollers:** Mount the fixed and adjustable rollers onto the top edge of the door panels.
- 4. Install Bottom Pivot Plate:** Determine the fixed pivot position on the floor. Drill a hole and insert the brass sleeve, then secure the bottom pivot plate.
- 5. Install Handle:** Attach the handle to the door panel.

3.3 Video Installation Guide

For a visual demonstration of the installation process, please refer to the official instruction video below.

Your browser does not support the video tag.

Video 3.1: Official Bifold Barn Door Instruction Video by SmartStandard. This video demonstrates the assembly and installation steps for the bifold barn door system.

4. OPERATION

The SMARTSTANDARD Bifold Barn Door is designed for smooth and efficient operation, maximizing space utilization.

4.1 Space-Saving Functionality

The bi-fold design allows the door panels to fold inward, reducing the space required for door swing compared to traditional hinged doors. When fully open, the door occupies approximately 50% less space, making it ideal for smaller rooms, closets, or areas where maximizing floor space is crucial.

Save 50% of Space

Takes up hardly any extra space, especially when the door is folded up.



Figure 4.1: Demonstration of the 50% space-saving feature when the door is open.

4.2 Smooth and Quiet Movement

The integrated rollers and track system ensure the door slides smoothly and quietly. The design incorporates

features to minimize noise during opening and closing, contributing to a peaceful environment.



Figure 4.2: Bumper strip design and silent operation features.

5. MAINTENANCE

Proper maintenance ensures the longevity and optimal performance of your SMARTSTANDARD Bifold Barn Door.

5.1 Material Care

The door panels are constructed from primed MDF with waterproof and scratch-resistant properties. To clean, wipe with a soft, damp cloth. Avoid abrasive cleaners or harsh chemicals that could damage the finish.



Figure 5.1: Illustration of the door's waterproof and scratch-resistant material properties.

5.2 Hardware Maintenance

The heavy-duty black steel hardware is designed for durability. Periodically check all screws and bolts to ensure they are tight. Lubricate moving parts of the rollers and hinges annually with a silicone-based lubricant to maintain smooth operation and prevent squeaking.

6. TROUBLESHOOTING

If you encounter any issues with your bifold barn door, refer to the following common troubleshooting tips:

- **Door not sliding smoothly:** Check the track for any obstructions. Ensure rollers are clean and lubricated. Verify that the track is level and securely mounted.
- **Door not closing properly:** Inspect hinges for damage or misalignment. Ensure the bottom pivot plate is correctly installed and the door is plumb.
- **Excessive noise during operation:** Lubricate rollers and hinges. Check for loose hardware and tighten as necessary.
- **Door panels are uneven:** Adjust the height of the adjustable roller using an Allen wrench to level the door parallel to the horizontal position of the rail.

7. PRODUCT SPECIFICATIONS

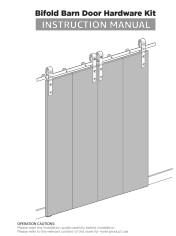
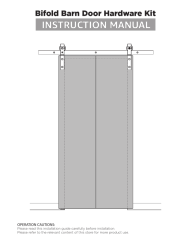
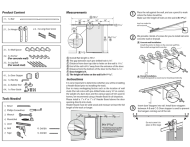
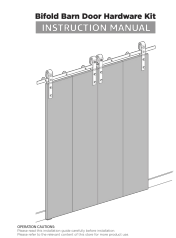
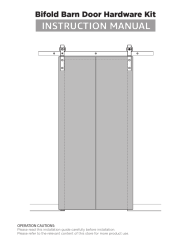
Specification	Detail
Brand	SMARTSTANDARD

Specification	Detail
Model Number	M-BDM-HB2-TKJ-WH
Color	White
Material	Polyvinyl Chloride (Primed MDF panels)
Style	Modern
Item Weight	71 Pounds
Product Dimensions	5 x 24 x 84 inches (Overall)
Door Panel Size	24"W x 84"H (each panel 12"W), Thickness: 1 3/8"
Track Length	28" (2.33 FT)
Assembly Required	Yes
Included Components	Adjustable Roller, Bi-Fold Door Butt Hinges, Fixed Roller, Hardware Kit, Track Kit

8. WARRANTY AND SUPPORT

SMARTSTANDARD is committed to providing high-quality products. For specific warranty information, please refer to the documentation included with your purchase or contact SMARTSTANDARD customer support.

If you require assistance with installation, troubleshooting, or have any questions regarding your product, please visit the official SMARTSTANDARD website or contact their customer service department. Contact details are typically found in the packaging or on the brand's official online presence.

 <p>The image shows the cover of the 'Bifold Barn Door Hardware Kit Instruction Manual'. It features a technical drawing of a bifold barn door with multiple panels and rollers. The title 'Bifold Barn Door Hardware Kit' and 'INSTRUCTION MANUAL' are at the top. Below the drawing, there is a small section titled 'IMPORTANT NOTES'.</p>	<p>Bifold Barn Door Hardware Kit: Installation Manual</p> <p>Comprehensive installation manual for the SMARTSTANDARD Bifold Barn Door Hardware Kit, detailing hardware components, tools required, measurements, important notes, and step-by-step assembly instructions for various door sizes.</p>
 <p>The image shows the cover of the 'Bifold Barn Door Hardware Kit Instruction Manual'. It features a technical drawing of a bifold barn door with multiple panels and rollers. The title 'Bifold Barn Door Hardware Kit' and 'INSTRUCTION MANUAL' are at the top. Below the drawing, there is a small section titled 'IMPORTANT NOTES'.</p>	<p>Bifold Barn Door Hardware Kit Installation Manual</p> <p>Comprehensive installation manual for the SMARTSTANDARD Bifold Barn Door Hardware Kit, detailing parts, measurements, and step-by-step assembly instructions for various door sizes and wall types.</p>
 <p>The image shows the cover of the 'SMARTSTANDARD J Shape 6.6ft Sliding Barn Door Hardware Installation Manual'. It features a technical drawing of a sliding barn door with rollers. The title 'SMARTSTANDARD J Shape 6.6ft Sliding Barn Door Hardware Installation Manual' is at the top. Below the drawing, there is a small section titled 'IMPORTANT NOTES'.</p>	<p>SMARTSTANDARD J Shape 6.6ft Sliding Barn Door Hardware Installation Manual</p> <p>A comprehensive installation guide for the SMARTSTANDARD J Shape 6.6ft sliding barn door hardware kit. This manual provides detailed instructions, component lists, measurements, and necessary tools for proper setup.</p>
 <p>The image shows the cover of the 'SmartStandard Sliding Door Hardware Installation Manual'. It features a technical drawing of a sliding barn door with rollers. The title 'SmartStandard Sliding Door Hardware Installation Manual' is at the top. Below the drawing, there is a small section titled 'IMPORTANT NOTES'.</p>	<p>SmartStandard Sliding Door Hardware Installation Manual</p> <p>Comprehensive guide for installing SmartStandard sliding door hardware, including measurements, tools needed, and step-by-step instructions for a secure and smooth door operation.</p>
 <p>The image shows the cover of the 'Bifold Barn Door Hardware Kit Instruction Manual'. It features a technical drawing of a bifold barn door with multiple panels and rollers. The title 'Bifold Barn Door Hardware Kit' and 'INSTRUCTION MANUAL' are at the top. Below the drawing, there is a small section titled 'IMPORTANT NOTES'.</p>	<p>Bifold Barn Door Hardware Kit: Installation Manual</p> <p>Comprehensive installation manual for the SMARTSTANDARD Bifold Barn Door Hardware Kit, detailing hardware components, tools required, measurements, important notes, and step-by-step assembly instructions for various door sizes.</p>
 <p>The image shows the cover of the 'Bifold Barn Door Hardware Kit Instruction Manual'. It features a technical drawing of a bifold barn door with multiple panels and rollers. The title 'Bifold Barn Door Hardware Kit' and 'INSTRUCTION MANUAL' are at the top. Below the drawing, there is a small section titled 'IMPORTANT NOTES'.</p>	<p>Bifold Barn Door Hardware Kit Installation Manual</p> <p>Comprehensive installation manual for the SMARTSTANDARD Bifold Barn Door Hardware Kit, detailing parts, measurements, and step-by-step assembly instructions for various door sizes and wall types.</p>

