

**Genérico 48MP Digital USB Microscope with 7-inch IPS Display (Model: 2420WON08242919)**

# Genérico 48MP Digital USB Microscope User Manual

Model: 2420WON08242919

## INTRODUCTION

This manual provides detailed instructions for the setup, operation, and maintenance of your Genérico 48MP Digital USB Microscope with a 7-inch IPS Display. Please read this manual thoroughly before using the device to ensure proper functionality and longevity.

## PACKAGE CONTENTS

Please verify that all items listed below are included in your package:

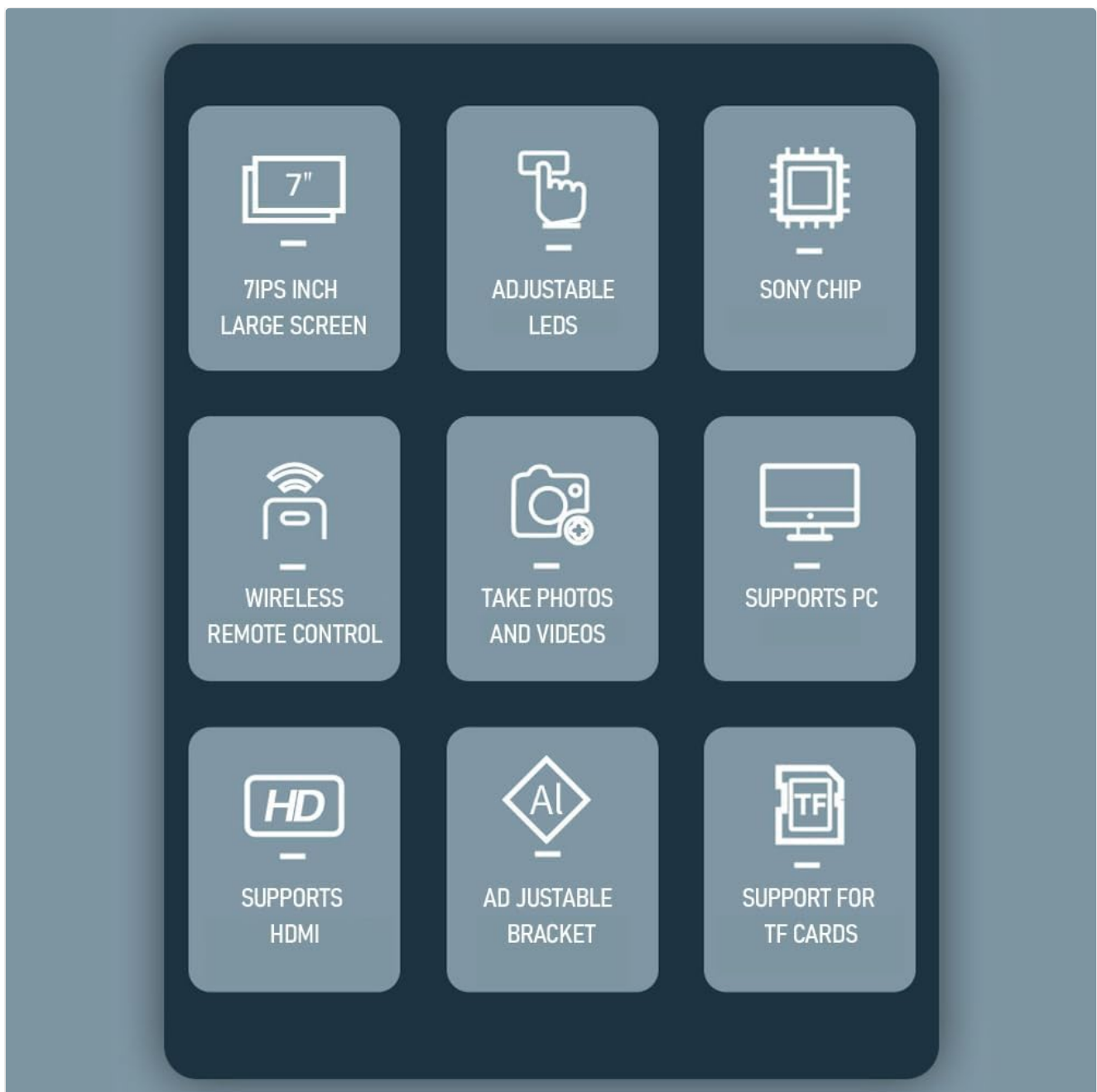
- 1 x Digital Microscope Unit
- 1 x Support Base
- 1 x Adjustable Stand
- 1 x Wireless Remote Control
- 2 x LED Auxiliary Lights
- 1 x USB Cable
- 1 x Type-C Cable
- 4 x Screws
- 1 x Wrench
- 1 x Calibration Ruler
- 1 x User Manual

## PRODUCT OVERVIEW

Familiarize yourself with the main components of your digital microscope.



**Figure 1:** Front view of the Genérico Digital USB Microscope, showing the main unit, 7-inch IPS display, adjustable stand, and base with auxiliary LED lights.



**Figure 2:** Overview of key features including 7-inch IPS screen, adjustable LEDs, Sony chip, wireless remote control, photo/video capture, PC support, HDMI support, adjustable bracket, and TF card support.

# IPS display 178° viewing Angle

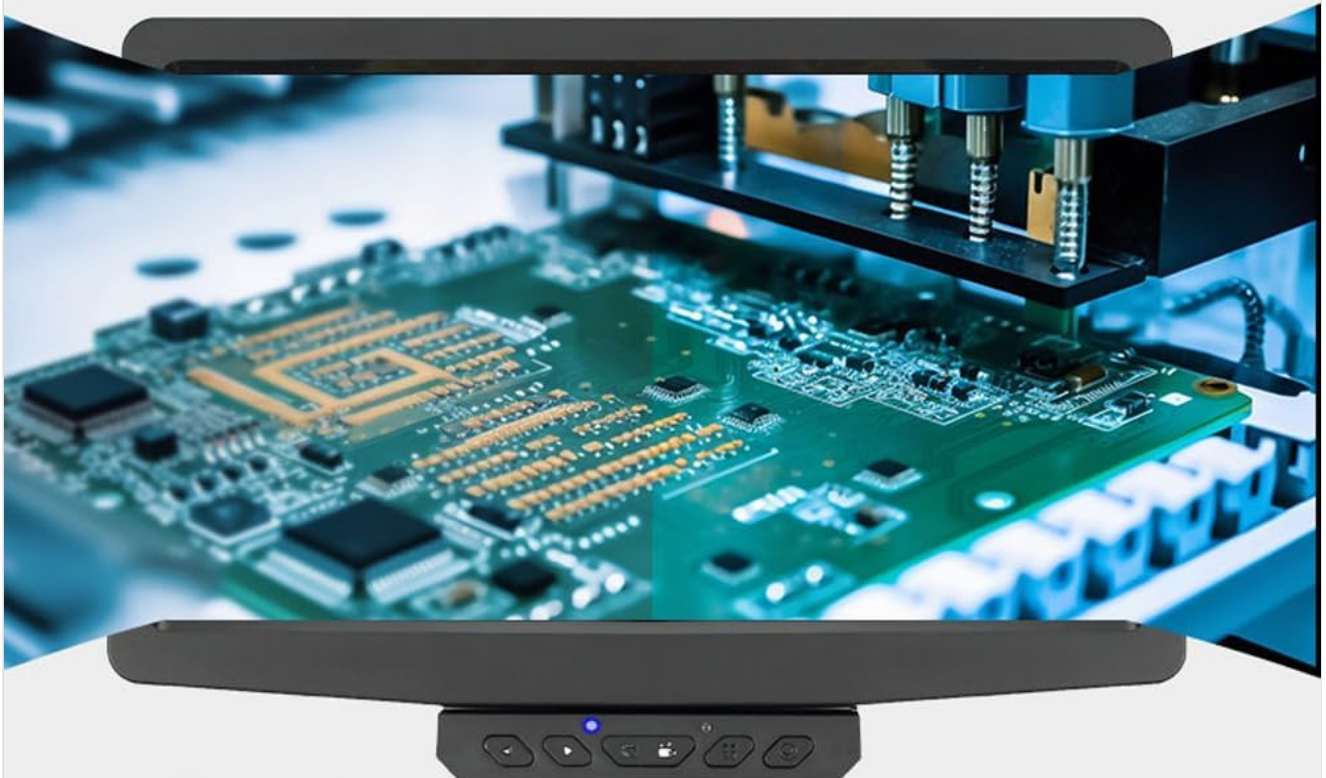
The performance of the IPS screen such as color flip and brightness conversion, so that you can see the color bright saturated natural quality picture from any Angle



Ordinary screen



IPS screen



**Figure 3:** Illustration of the 178° wide viewing angle of the IPS display, providing clear and saturated images from various angles compared to ordinary screens.



# SONY CMOS

Use ultra-HD SONY 48MP sensor to present high-definition picture, multi-field use, to meet the needs of various industries for picture quality

**Figure 4:** Detail showing the ultra-HD Sony 48MP CMOS sensor, designed for high-definition imaging across various applications.

## SETUP

### 1. Assembly:

Carefully unpack all components. Attach the adjustable stand to the support base using the provided screws and wrench. Mount the microscope unit onto the adjustable stand, ensuring it is securely fastened.



## Aluminum alloy bracket

Aviation aluminum alloy column,  
precision gear adjustment height  
thick large size metal floor, science  
fiction alien eyes front face design



**Figure 5:** The aviation aluminum alloy bracket allows for precise height adjustment and viewing angle modification, addressing common reflection issues in vertical microscopes.

### 2. **Connect Auxiliary Lights:**

Plug the two LED auxiliary lights into the designated ports on the base unit. These lights provide additional illumination for your observations.

### 3. **Power Connection:**

Connect the microscope to a power source using the provided USB or Type-C cable. Ensure the device is fully charged before initial use or connect it to continuous power.

### 4. **TF Card Insertion:**

Locate the TF card slot on the microscope unit. Insert a C10 TF card (up to 32GB, not included) for storing captured photos and videos. Ensure the card is inserted correctly until it clicks into place.

## OPERATING INSTRUCTIONS

### 1. **Power On/Off:**

Press and hold the power button on the microscope unit or the remote control to turn the device on or off. The 7-inch IPS display will illuminate.

### 2. **Adjusting Magnification:**

The microscope offers an adjustable magnification range from 500X to 1000X. Rotate the focus knob on the microscope barrel to adjust the magnification and bring your specimen into clear focus.

### 3. Adjusting Illumination:

Use the mechanical linear dimming knob on the base to control the intensity of the main LED light. The auxiliary LED lights can also be adjusted for optimal illumination of your specimen.

## Mechanical linear dimming knob

The mechanical knob can linearly control the light intensity to better experience the image effect under digital brightness



**Figure 6:** The mechanical knob allows for linear control of the main LED light intensity, while the auxiliary lights can be independently adjusted.

### 4. Capturing Photos and Videos:

Press the dedicated photo button to capture still images or the video button to start/stop recording. Files will be saved to the inserted TF card.

### 5. Using the Wireless Remote Control:

The included wireless infrared remote control allows for multi-angle operation from 1-5 meters, providing convenience and reducing device shake during operation.

## Wireless infrared remote control

1-5m multi-angle control, get rid of wire bondage, refuse to shake, show a clear picture



**Figure 7:** The wireless remote control enables convenient operation from a distance, preventing accidental movement of the microscope during observation or capture.

### 6. Connecting to External Display (HDMI):

The microscope supports HDMI output for viewing on a larger screen. Connect an HDMI cable (not included) from the microscope's HDMI port to an external monitor or TV. This allows for shared viewing and better detail observation.



## HDMI same screen output, You can see it better on the big screen

Larger screen display, support multiple people watching at the same time, convenient record sharing, high-definition picture quality, support measurement



**Figure 8:** The microscope's HDMI output feature allows for displaying the live view on a larger external screen, facilitating group viewing and detailed analysis.

### 7. Connecting to PC (USB):

Connect the microscope to your computer via the USB 2.0 port. The device is compatible with Windows XP/Win7/Win8.1/Win10 and macOS X 10.5 or higher. You may need to install specific software or use a generic webcam application to view the live feed and manage files.

## MAINTENANCE

- **Cleaning:** Use a soft, dry cloth to clean the exterior of the microscope and display. For the lens, use a specialized lens cleaning cloth and solution. Avoid abrasive cleaners or solvents.
- **Storage:** Store the microscope in a cool, dry place away from direct sunlight and extreme temperatures. When not in use for extended periods, ensure the battery is partially charged (around 50%) to prolong its lifespan.
- **Battery Care:** Avoid fully discharging the battery frequently. Recharge the battery when the low battery indicator appears.

## TROUBLESHOOTING

Problem	Possible Cause	Solution
Device does not power on.	Low battery or no power connection.	Connect the device to a power source using the USB/Type-C cable and allow it to charge. Ensure the power button is pressed and held.
Image is blurry or out of focus.	Incorrect focus adjustment or improper working distance.	Rotate the focus knob to adjust the focus. Adjust the distance between the lens and the specimen using the adjustable stand.
No image on external display via HDMI.	Incorrect HDMI cable connection or external display input setting.	Ensure the HDMI cable is securely connected to both the microscope and the external display. Select the correct HDMI input on your external display.
Cannot save photos/videos.	No TF card inserted, TF card full, or TF card error.	Insert a compatible C10 TF card (up to 32GB). Check if the TF card has sufficient space. Format the TF card if necessary (this will erase all data).
Remote control not working.	Battery in remote control is dead or remote is out of range.	Replace the battery in the remote control. Ensure you are within the 1-5 meter operating range and have a clear line of sight to the microscope's IR receiver.

## SPECIFICATIONS

Feature	Specification
Screen Size	7-inch IPS Display
Screen Resolution	1024 * 600
Magnification	500X / 1000X (Adjustable)
Pixel Resolution	100W
Image Resolution	48M, 36M, 24M, 20M, 16M, 12M, 10M, 8M, 5M, 3M, 2M
Video Resolution	1440P, 720P, 1080P
Lens Angle	16°
Connection Interface	Micro USB 2.0 / Type-C
LED Illumination	8 LED beads, knob-type adjustment (main light), 2 auxiliary LED lights
TF Card Slot	Supports max 32G C10 TF card
Battery	3.7V, 4000 mAh
Operating Temperature	-10°C ~ 55°C
Supported Languages	Simplified Chinese, Traditional Chinese, Japanese, English, French, Russian, Korean, German, Spanish, Portuguese, Italian

Feature	Specification
Compatible OS	Windows XP/Win7/Win8.1/Win10/ macOS X 10.5 or higher
Item Dimensions	335 * 177 mm (Product description) / 32 x 27.5 x 12 cm (Specifications)
Product Weight	1.51 kg
Manufacturer Reference	2420WON08242919
ASIN	B0DFPRFMNW

## WARRANTY AND SUPPORT

For warranty information, please refer to the terms and conditions provided at the point of purchase or contact your retailer. This product typically comes with a standard manufacturer's warranty covering defects in materials and workmanship.

For technical support, troubleshooting assistance beyond this manual, or inquiries regarding replacement parts, please contact the manufacturer or your authorized dealer. Keep your purchase receipt as proof of purchase for any warranty claims.

Return Policy: This product is subject to a 30-day return policy from the date of purchase, as per the retailer's terms.