

[Manuals.plus](#) /

> [VEVOR](#) /

> VEVOR Bluetooth App Control 2KW Diesel Air Heater User Manual

VEVOR 2KW Diesel Air Heater (chinese diesel heater)

VEVOR Bluetooth App Control 2KW Diesel Air Heater User Manual

Model: 2KW Diesel Air Heater (Item Model Number: chinese diesel heater)

INTRODUCTION

This manual provides detailed instructions for the safe and efficient operation of your VEVOR 12V 2KW Diesel Air Heater. This unit is designed to provide efficient heating for various applications, including RVs, trailers, campers, vans, boats, and indoor spaces. It features Bluetooth app control, remote control, and automatic altitude adjustment for enhanced user convenience.

SAFETY INFORMATION

Read all safety warnings and instructions carefully before installation and operation. Failure to follow these instructions may result in fire, explosion, electric shock, or other hazards.

- Ensure proper ventilation during operation to prevent carbon monoxide buildup.
- Do not operate the heater in enclosed, unventilated spaces.
- Keep flammable materials away from the heater's exhaust and air intake.
- Ensure all fuel connections are secure and free from leaks.
- The heater operates on 12V DC power. Verify correct voltage before connecting.
- Do not modify the heater or its components. Use only original replacement parts.
- The heater is equipped with overheating protection (≥ 270 °C/518 °F). Do not bypass this safety feature.
- Always allow the heater to complete its shutdown cycle to burn off excess fuel and prevent future startup issues. Interrupting power during shutdown can cause damage.

PACKAGE CONTENTS

Verify that all components are present and undamaged upon unpacking.



Image: Overview of the VEVOR Diesel Air Heater and its included accessories, such as the main heater unit, fuel tank, exhaust silencer, mounting plate, user manual, remote control, LCD panel, wiring harness, fuel pump, fuel filter, air filter, pipes, and installation kit.

- Diesel Air Heater Unit (2KW)
- Fuel Tank (10 L / 2.6 Gal)
- Exhaust Silencer
- Mounting Plate
- User Manual
- Remote Control
- LCD Control Panel
- Wire Harness
- Fuel Pump
- Fuel Filter
- Air Filter
- Inlet and Outlet Pipes
- Cable Zip Ties
- Installation Kit (screws, clamps, fuel hose, fuel pump clip)

SPECIFICATIONS

Heater Power	2 KW
Rated Voltage	12 V
Applicable Range	10-15 m ² (108-161 ft ²)
Fuel Consumption	0.12 L - 0.26 L/h

Fuel Tank Volume	10 L (2.6 Gal)
Control Methods	Bluetooth App, Remote Control, LCD Panel
Adjustable Temperature Range	8 °C - 36 °C (46 °F - 96.8 °F)
Working Temperature	-40 °C - 40 °C (-40 °F - 104 °F)
Applicable Altitude	Up to 5,500 meters (18,045 feet)
Overheating Protection	≥270 °C (518 °F)
Product Dimensions	13.4 x 4.5 x 5.5 inches (340 x 115 x 140 mm)
Item Weight	11 pounds (5 kg)
Air Outlet Pipe Inner Diameter	2.4 inches (60 mm)

SETUP

Proper installation is critical for the safe and efficient operation of your diesel air heater. Refer to the included user manual for detailed diagrams and step-by-step instructions.

- 1. Choose a Mounting Location:** Select a stable, flat surface for mounting the heater. Ensure adequate clearance around the unit for air circulation and maintenance. The mounting plate should be securely fastened. Consider the routing of exhaust and intake pipes to ensure they are clear of obstructions and away from flammable materials.
- 2. Install Fuel System:**
 - Mount the fuel tank in a secure location.
 - Connect the fuel hose from the tank to the fuel filter, then to the fuel pump, and finally to the heater unit. Ensure all connections are tight and leak-free.
 - Position the fuel pump correctly (usually at an angle) to ensure proper fuel flow and minimize noise.
- 3. Connect Air Intake and Exhaust:**
 - Attach the air intake pipe to the heater's intake port.
 - Connect the exhaust pipe to the heater's exhaust port and secure it with clamps. Install the exhaust silencer if desired.
 - Route the exhaust pipe safely to the exterior, ensuring it is clear of the vehicle's body, fuel lines, and other sensitive components. Avoid sharp bends.
- 4. Electrical Connections:**
 - Connect the main power wire harness to a 12V DC power source, ensuring proper polarity. It is recommended to use an inline fuse for protection.
 - Connect the LCD control panel and remote receiver (if separate) to the main wiring harness.
- 5. Initial Fuel Priming:** Before first use, prime the fuel system to ensure the fuel pump is filled with diesel and air is removed. This may involve a specific function on the control panel or repeated startup attempts.

3 INTELLIGENT CONTROL METHODS



98 ft Bluetooth Connectivity



32 ft Remote Control



LCD Panel

Image: Close-up of the LCD control panel, displaying temperature and operational status, typically mounted for easy access.

- **Power On/Off:** Press and hold the power button to start or stop the heater. The unit will undergo a startup or shutdown sequence.
- **Temperature Adjustment:** Use the up/down arrows to set the desired temperature between 8 °C - 36 °C (46 °F - 96.8 °F).
- **Mode Selection:** Cycle through available modes (e.g., constant temperature, manual power) using the mode button.
- **Timer Function:** Set a timer for automatic startup or shutdown. Refer to the detailed manual for specific timer programming steps.
- **Altitude Adjustment:** The heater features automatic altitude compensation up to 5,500 meters (18,045 feet). No manual adjustment is typically required for this function.

2. Using the Remote Control

RUN SMOOTHLY EVEN AT **18045FT** ALTITUDE



Image: A hand holding the remote control, demonstrating its use to operate the diesel heater from a distance.

- The remote control allows operation from up to 10 meters (32 feet).
- Functions typically include power on/off, temperature adjustment, and mode selection.
- Ensure the remote has fresh batteries and a clear line of sight to the heater's receiver for optimal performance.

3. Using the Bluetooth App Control

UNDER 1 GAL DIESEL FOR 1 NIGHT



Energy-efficient
Fuel Pump



Aluminum
Body



100%
Combustion

VEVOR: 0.12L-0.26 (L/h)

Other: 0.26L-0.4 (L/h)

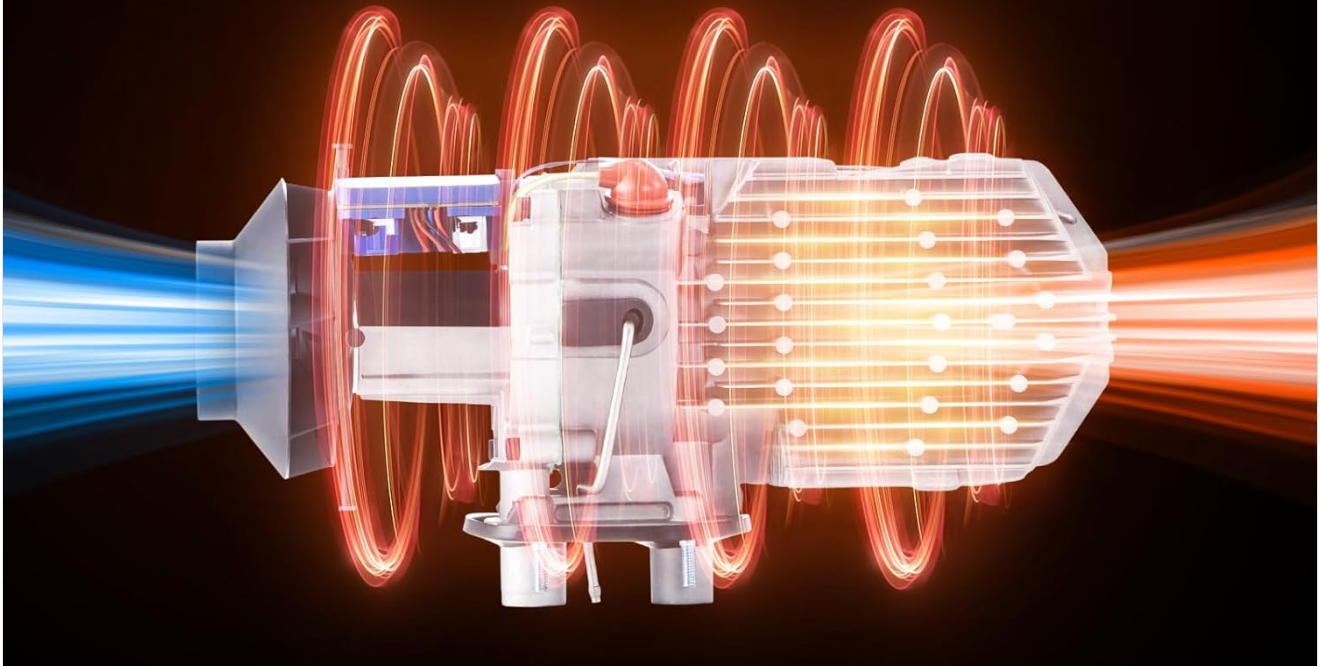


Image: A smartphone screen showing the VEVOR app interface for controlling the diesel heater via Bluetooth, with options for ignition, temperature, and status monitoring.

- **Download the App:** Search for the official VEVOR diesel heater app on your smartphone's app store.
- **Pairing:** Follow the in-app instructions to pair your smartphone with the heater via Bluetooth. Ensure your phone's Bluetooth is enabled and within 30 meters (98 feet) of the heater.
- **Control Functions:** The app provides comprehensive control, including power on/off, temperature adjustment, timer settings, and monitoring of operational status.

MAINTENANCE

Regular maintenance ensures the longevity and safe operation of your diesel air heater.

- **Fuel Filter:** Inspect and replace the fuel filter periodically, especially if you notice reduced fuel flow or performance issues.
- **Air Filter:** Clean or replace the air filter as needed to ensure proper combustion and prevent dust from entering the unit.
- **Exhaust System:** Check the exhaust pipe and silencer for any blockages, damage, or leaks. Ensure the

exhaust exit remains clear.

- **Electrical Connections:** Periodically inspect all wiring and connections for signs of wear, corrosion, or looseness.
- **General Cleaning:** Keep the exterior of the heater clean and free from debris. Do not use abrasive cleaners.
- **Glow Plug:** If experiencing startup issues, inspect the glow plug. Refer to the detailed manual for inspection and replacement procedures.

TROUBLESHOOTING

This section addresses common issues. For more complex problems, consult the full user manual or contact customer support.

Problem	Possible Cause	Solution
Heater does not start	No power, fuel not primed, clogged fuel filter, faulty glow plug.	Check power connections and fuse. Prime fuel system. Inspect/replace fuel filter. Check glow plug.
Low heat output	Clogged air intake/exhaust, low fuel pressure, incorrect temperature setting.	Clear obstructions from intake/exhaust. Check fuel pump. Adjust temperature setting.
Excessive smoke	Poor combustion, incorrect fuel-air mixture, carbon buildup.	Ensure proper fuel quality. Perform maintenance to clean combustion chamber. Allow full shutdown cycle.
Unusual noise	Loose components, fuel pump noise, fan obstruction.	Inspect for loose parts. Ensure fuel pump is mounted correctly. Check fan for obstructions.
Remote/App not connecting	Out of range, battery low, pairing issue.	Move closer to heater. Replace remote batteries. Repair device via app.

WARRANTY AND SUPPORT

For warranty information, technical support, or replacement parts, please refer to the contact details provided in your product packaging or visit the official VEVOR website. Keep your purchase receipt as proof of purchase.

Manufacturer: VEVOR

Website: [Visit the VEVOR Store on Amazon](#)