



Manuals.plus /

› Bevivog /

› Bevivog Metal Bathroom Storage Cabinet Freestanding, 67" Tall Narrow Pantry Cabinet, Model YXM Instruction Manual

Bevivog YXM

Bevivog Metal Bathroom Storage Cabinet (Model YXM) Instruction Manual

Freestanding 67" Tall Narrow Pantry Cabinet

1. INTRODUCTION

Thank you for choosing the Bevivog Metal Bathroom Storage Cabinet, Model YXM. This manual provides essential information for the safe assembly, operation, and maintenance of your new cabinet. Please read these instructions thoroughly before beginning assembly and retain this manual for future reference.

2. IMPORTANT SAFETY INFORMATION

- **Anti-Tipping Kit:** Always install the included anti-tipping kit to secure the cabinet to a wall. This prevents accidental tipping, which can cause serious injury.
- **Weight Capacity:** Do not exceed the maximum weight capacity of 50 lbs per shelf. Overloading can compromise stability and lead to structural failure.
- **Placement:** Place the cabinet on a flat, stable, and level surface. Uneven surfaces can affect stability.
- **Water Exposure:** Avoid exposing the cabinet to excessive water. While moisture-resistant, prolonged exposure can cause damage.
- **Children:** Keep children away from the cabinet during assembly. Do not allow children to climb on or play with the cabinet.



ANTI-TIP KIT INCLUDED

Prevents tipping over to create
Provide a safer living space

Figure 2.1: Anti-Tip Kit Installation. This image illustrates the proper method for securing the cabinet to the wall using the provided anti-tip kit, a crucial step for safety.

3. PARTS LIST

Before assembly, verify that all components are present and undamaged. The package contains 18 individual pieces, including panels, shelves, hardware, and the anti-tipping kit. Refer to the included diagram for a detailed list of parts and their corresponding labels.

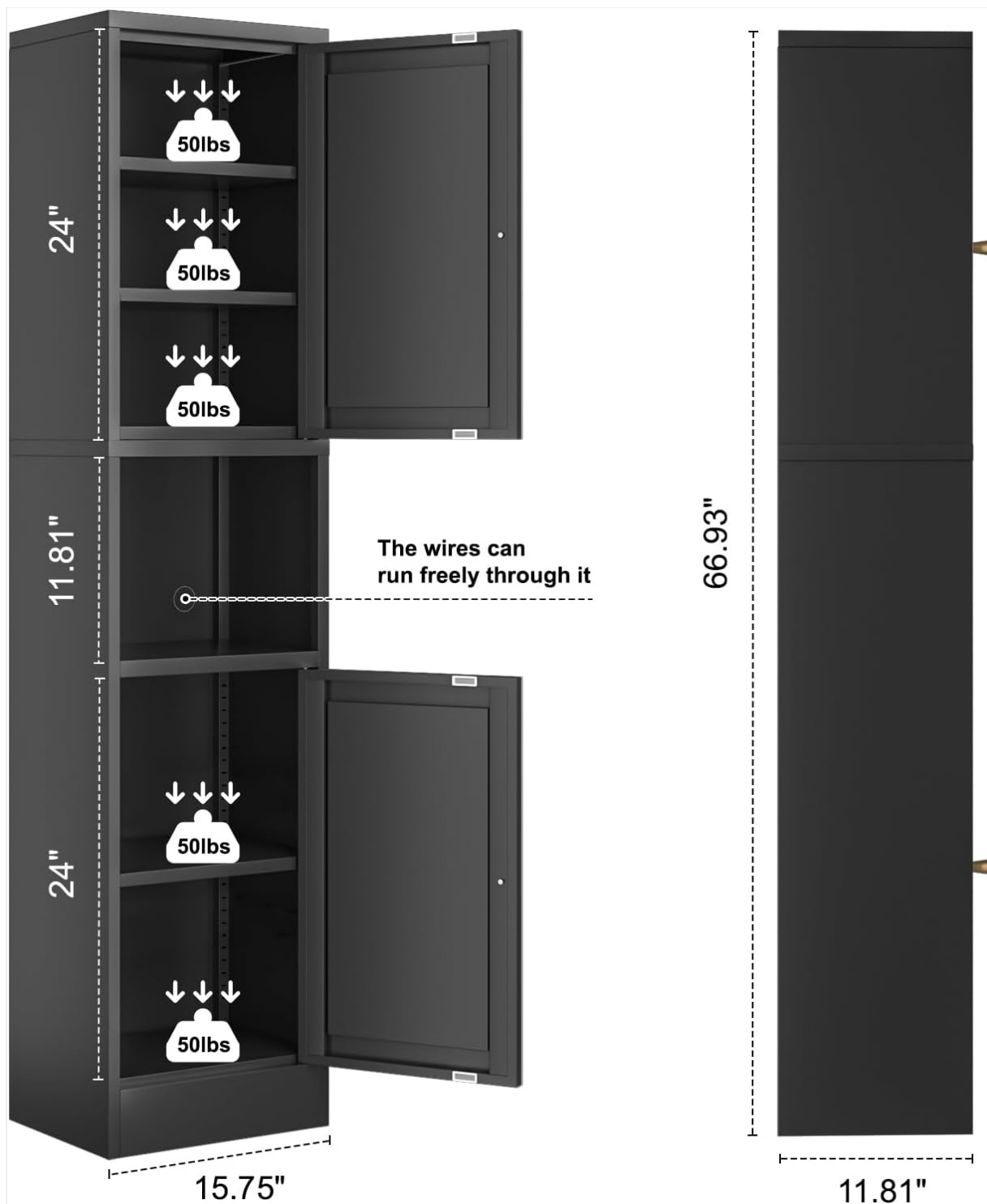


Figure 3.1: Cabinet Dimensions and Internal Structure. This diagram provides an overview of the cabinet's dimensions (66.93"H x 15.75"W x 11.81"D) and indicates the 50 lbs weight limit per shelf, along with the wire pass-through hole.

4. SETUP AND ASSEMBLY

Assembly of the Bevivog Metal Storage Cabinet is designed to be straightforward. All panels are clearly labeled, and hardware is separately bagged and labeled. It is recommended to lay out all parts and count screws/fittings before starting.

4.1 Assembly Steps

1. **Prepare the Area:** Clear a spacious, flat area for assembly.
2. **Identify Parts:** Match all components with the parts list diagram.
3. **Assemble Base:** Begin by connecting the base panels as per the instructions.

4. **Attach Side Panels:** Secure the side panels to the base.
5. **Install Shelves:** Insert the adjustable shelves into the desired positions. The cabinet features multiple slots for height customization.
6. **Attach Doors:** Mount the magnetic doors, ensuring they open and close smoothly.
7. **Install Handles:** Secure the handles to the doors.
8. **Secure Anti-Tip Kit:** Follow the instructions provided with the anti-tip kit to securely fasten the cabinet to a wall. This step is critical for safety.



Figure 4.1: Assembled Cabinet View. This image displays the fully assembled Bevivog cabinet, illustrating its exterior and interior storage capabilities with adjustable shelves.

4.2 Multiple Installation Options

The cabinet offers versatile configurations to suit various needs. The steel doors can be installed side-to-side, allowing for customization.

MULTIPLE INSTALLATION OPTIONS

Choose a way that works for you



Figure 4.2: Multiple Installation Options. This visual guide presents various ways to configure the cabinet, including options with open shelves or fully enclosed storage, adapting to different room layouts and storage requirements.

5. OPERATING INSTRUCTIONS

5.1 Adjusting Shelves

The cabinet features adjustable shelves, allowing you to customize the storage space for items of various heights. To adjust a shelf, carefully lift it from its current position and re-insert it into the desired slots along the cabinet's interior.

5.2 Door Operation

The cabinet doors are equipped with magnetic stoppers to ensure they remain securely closed. Gently pull the handle to open and push to close until the magnetic stopper engages.

5.3 Wire Management

A round hole is integrated into the open shelf section, designed to facilitate wire pass-through for electronic devices if the cabinet is used in a living room or office setting.



Figure 5.1: Key Cabinet Features. This image details the magnetic door stopper for secure closure, the adjustable shelf mechanism for flexible storage, the wire pass-through for electronics, and the ergonomic handle design.

6. CARE AND MAINTENANCE

The Bevivog cabinet is constructed from cold-rolled steel with an electrostatic powder coating, making it rust-proof and easy to clean.

- **Cleaning:** Wipe the cabinet surfaces with a soft, damp cloth. For stubborn marks, a mild soap solution can be used, followed by drying with a clean cloth.
- **Avoid Harsh Chemicals:** Do not use abrasive cleaners, solvents, or harsh chemicals, as these can damage the finish.
- **Moisture:** Although waterproof, promptly wipe away any spills to maintain the cabinet's appearance and integrity.
- **Inspection:** Periodically check all screws and connections to ensure they remain tight. Re-tighten if necessary.

Quality Materials

Made of cold-rolled steel
it's rust-proof and easy to clean

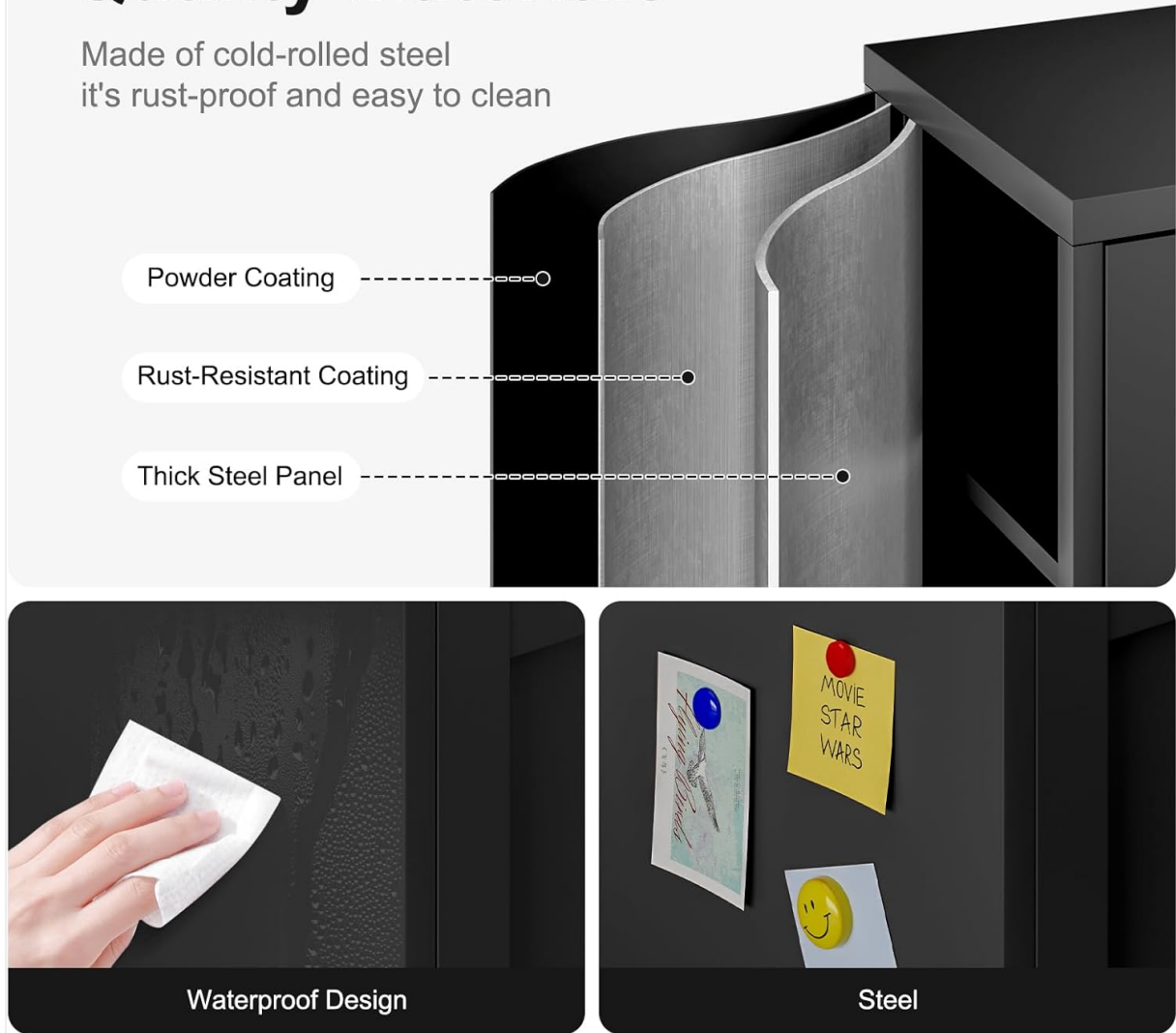


Figure 6.1: Material Quality and Features. This image highlights the cabinet's construction from thick steel with a rust-resistant powder coating, demonstrating its waterproof surface and magnetic capabilities for attaching notes.

7. TROUBLESHOOTING

Problem	Possible Cause	Solution
Cabinet is wobbly or unstable.	Uneven floor; loose connections; anti-tip kit not installed.	Ensure cabinet is on a level surface. Tighten all screws. Install the anti-tip kit as per instructions.
Doors do not close properly.	Misaligned hinges; obstruction; magnetic stopper issue.	Check hinge alignment and adjust if necessary. Ensure no items are blocking the door path. Verify magnetic stopper is clean and functional.
Difficulty during assembly.	Incorrect part orientation; screws not aligning.	Review the assembly diagrams carefully. Ensure parts are oriented correctly before tightening screws. Do not overtighten until all connections are started.

8. PRODUCT SPECIFICATIONS

Brand: Bevivog

Model Name: YXM

Product Dimensions: 12"D x 15.7"W x 67"H

Color: Black

Material: Metal (Cold-rolled steel)

Finish Type: Powder Coated

Weight Limit: 300 lbs total, 50 lbs per shelf

Item Weight: 47 pounds

Number of Shelves: 3 (adjustable)

Special Features: Adjustable Shelf, Anti-Tipping, Moisture Resistant, Magnetic Doors, Wire Pass-through

Mounting Type: Floor Mount (Freestanding with wall anchor)

Assembly Required: Yes

9. WARRANTY AND CUSTOMER SUPPORT

For any questions regarding assembly, missing parts, or product functionality, please contact Bevivog customer support. While specific warranty details are not provided in this manual, standard manufacturer warranties typically cover defects in materials and workmanship for a limited period from the date of purchase. Please retain your proof of purchase for any warranty claims.

Contact information for support can usually be found on the product packaging or the official Bevivog website.